

District I  
1625 N. French Dr., Hobbs, NM 88240  
District II  
811 South First, Artesia, NM 88210  
District III  
1000 Rio Brazos Road, Aztec, NM 87410  
District IV  
2040 South Pacheco, Santa Fe, NM 87505

State of New Mexico  
Energy Minerals and Natural Resources

Oil Conservation Division  
2040 South Pacheco  
Santa Fe, NM 87505

Form C-101  
Revised March 17, 1999

Submit to appropriate District Office  
State Lease - 6 Copies  
Fee Lease - 5 Copies

☐ AMENDED REPORT

APPLICATION FOR PERMIT TO DRILL, RE-ENTER, DEEPEN, PLUG BACK, OR ADD A ZONE

<sup>1</sup> Operator Name and Address <b>Clayton Williams Energy, Inc. Six Desta Drive, Suite 3000 Midland, TX 79705</b>		<sup>2</sup> OGRID Number <b>25706</b>
		<sup>3</sup> API Number <b>30 - 015-30968</b>
<sup>4</sup> Property Code <b>25235</b>	<sup>5</sup> Property Name <b>STATE "20B"</b>	<sup>6</sup> Well No. <b>6</b>

<sup>7</sup> Surface Location

UL or lot no.	Section	Township	Range	Lot Idn	Feet from the	North/South line	Feet from the	East/West line	County
<b>G</b>	<b>20</b>	<b>17 S</b>	<b>29 E</b>		<b>2310</b>	<b>north</b>	<b>1650</b>	<b>east</b>	<b>Eddy</b>

<sup>8</sup> Proposed Bottom Hole Location If Different From Surface

UL or lot no.	Section	Township	Range	Lot Idn	Feet from the	North/South line	Feet from the	East/West line	County

<sup>9</sup> Proposed Pool 1 <b>Grayburg Jackson -7R's,QN,GB,SA (28509)</b>	<sup>10</sup> Proposed Pool 2
--	-------------------------------

<sup>11</sup> Work Type Code <b>P</b>	<sup>12</sup> Well Type Code <b>O</b>	<sup>13</sup> Cable/Rotary <b>R</b>	<sup>14</sup> Lease Type Code <b>S</b>	<sup>15</sup> Ground Level Elevation <b>3610'</b>
<sup>16</sup> Multiple <b>N</b>	<sup>17</sup> Proposed Depth <b>3870'</b>	<sup>18</sup> Formation <b>Grayburg</b>	<sup>19</sup> Contractor <b>Key Energy Services</b>	<sup>20</sup> Spud Date <b>Upon approval</b>

<sup>21</sup> Proposed Casing and Cement Program

Hole Size	Casing Size	Casing weight/foot	Setting Depth	Sacks of Cement	Estimated TOC

<sup>22</sup> Describe the proposed program. If this application is to DEEPEN or PLUG BACK, give the data on the present productive zone and proposed new productive zone.  
Describe the blowout prevention program, if any. Use additional sheets if necessary.

**It is proposed to set a Retrievable Bridge Plug @  $\pm 3870'$  and Temporarily Abandon the Yeso formation (existing perfs @ 3904'-4149', 35 holes).**

**Perforate and stimulate Grayburg-San Andres formation: Lower San Andres 3586' - 3763' (OA), 14 holes, 1 spf; and Upper San Andres 2504' - 2931' (OA), 19 holes, 1 spf; and Grayburg 2126' - 2137' (OA), 6 holes, 1 spf.**

<sup>23</sup> I hereby certify that the information given above is true and complete to the best of my knowledge and belief.		<b>OIL CONSERVATION DIVISION</b>	
Signature: <i>Betsy Luna</i>		Approved by: <b>ORIGINAL SIGNED BY TIM W. GUM</b>	
Printed name: <b>Betsy Luna</b>		Title: <b>DISTRICT II SUPERVISOR</b>	
Title: <b>Engineering Technician</b>		Approval Date: <b>MAY 25 2000</b> Expiration Date: <b>MAY 25 2001</b>	
Date: <b>5/22/2000</b>	Phone: <b>(915) 682-6324</b>	Conditions of Approval: Attached <input type="checkbox"/>	

DISTRICT I  
P.O. Box 1980, Hobbs, NM 88241-1980

DISTRICT II  
P.O. Drawer DD, Artesia, NM 86211-0719

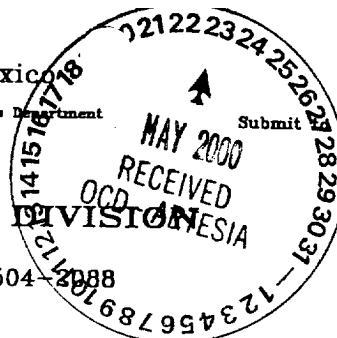
DISTRICT III  
1000 Rio Brazos Rd., Artec, NM 87410

DISTRICT IV  
P.O. BOX 2088, SANTA FE, N.M. 87504-2088

State of New Mexico  
Energy, Minerals and Natural Resources Department

OIL CONSERVATION DIVISION  
P.O. Box 2088  
Santa Fe, New Mexico 87504-2088

Form C-102  
Revised February 10, 1994  
Appropriate District Office  
State Lease - 4 Copies  
Fee Lease - 3 Copies



☐ AMENDED REPORT

### WELL LOCATION AND ACREAGE DEDICATION PLAT

API Number 30-015-30968	Pool Code 28509	Pool Name Grayburg Jackson-7R's, ON, GB, SA
Property Code 25235	Property Name STATE "20 B"	Well Number 6
OGRID No. 25706	Operator Name CLAYTON WILLIAMS ENERGY, INC.	Elevation 3610

#### Surface Location

UL or lot No.	Section	Township	Range	Lot Idn	Feet from the	North/South line	Feet from the	East/West line	County
G	20	17 S	29E		2310	NORTH	1650	EAST	EDDY

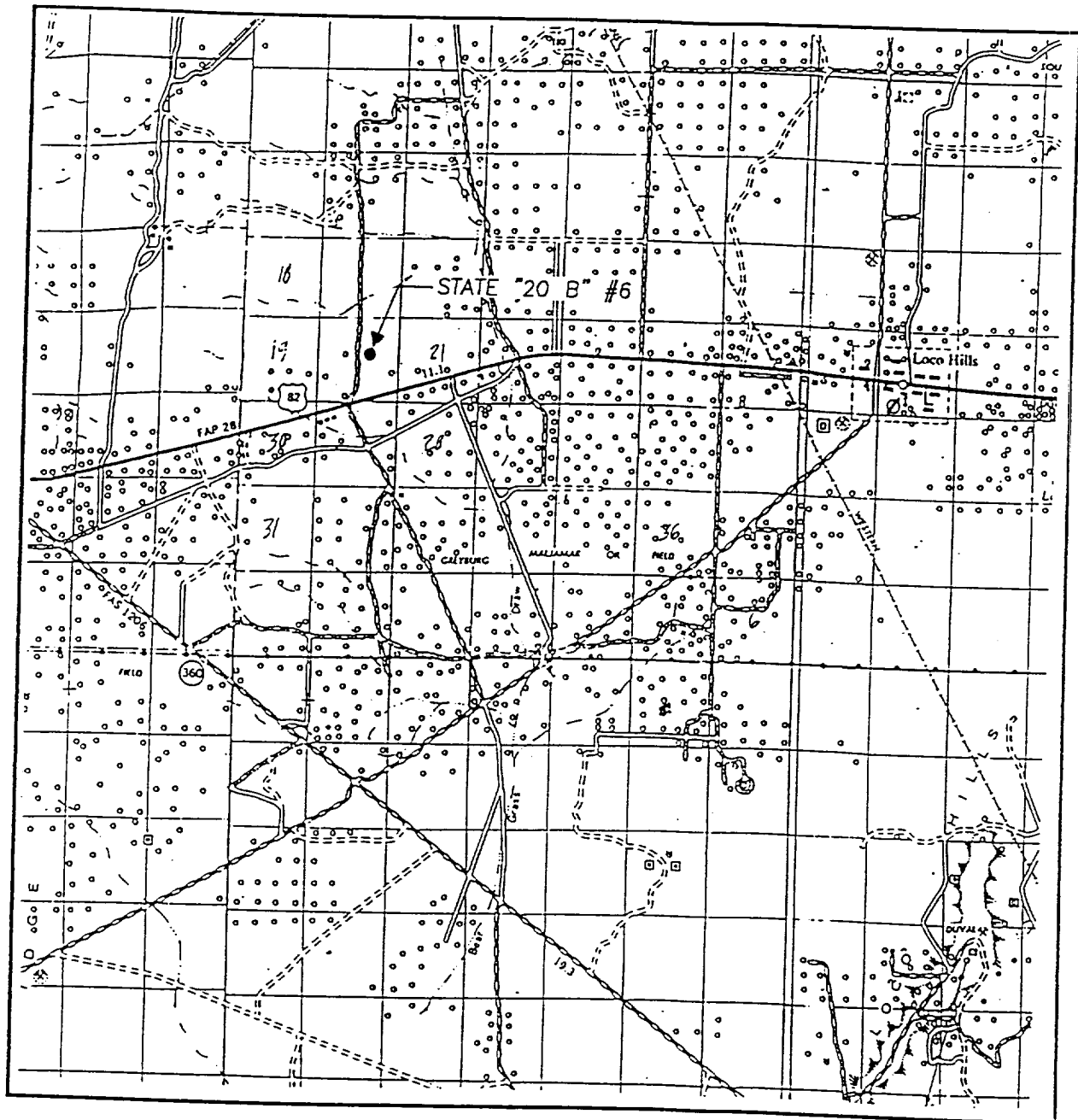
#### Bottom Hole Location If Different From Surface

UL or lot No.	Section	Township	Range	Lot Idn	Feet from the	North/South line	Feet from the	East/West line	County
Dedicated Acres 40	Joint or Infill	Consolidation Code	Order No.						

NO ALLOWABLE WILL BE ASSIGNED TO THIS COMPLETION UNTIL ALL INTERESTS HAVE BEEN CONSOLIDATED  
OR A NON-STANDARD UNIT HAS BEEN APPROVED BY THE DIVISION

	<b>OPERATOR CERTIFICATION</b>  I hereby certify the the information contained herein is true and complete to the best of my knowledge and belief.  <u>Betsy Luna</u> Signature  Betsy Luna Printed Name  Engineering Technician Title  05/22/2000 Date
	<b>SURVEYOR CERTIFICATION</b>  I hereby certify that the well location shown on this plat was plotted from field notes of actual surveys made by me or under my supervision and that the same is true and correct to the best of my belief.  FEBRUARY 2, 2000 Date Surveyed  Signature & Seal of Professional Surveyor  <u>Ronald J. Edson</u> 2/03/2000 00-11-0181
	Certificate No. RONALD J. EIDSON 3239 GARY EIDSON 12841 MACON McDONALD 12185

# VICINITY MAP

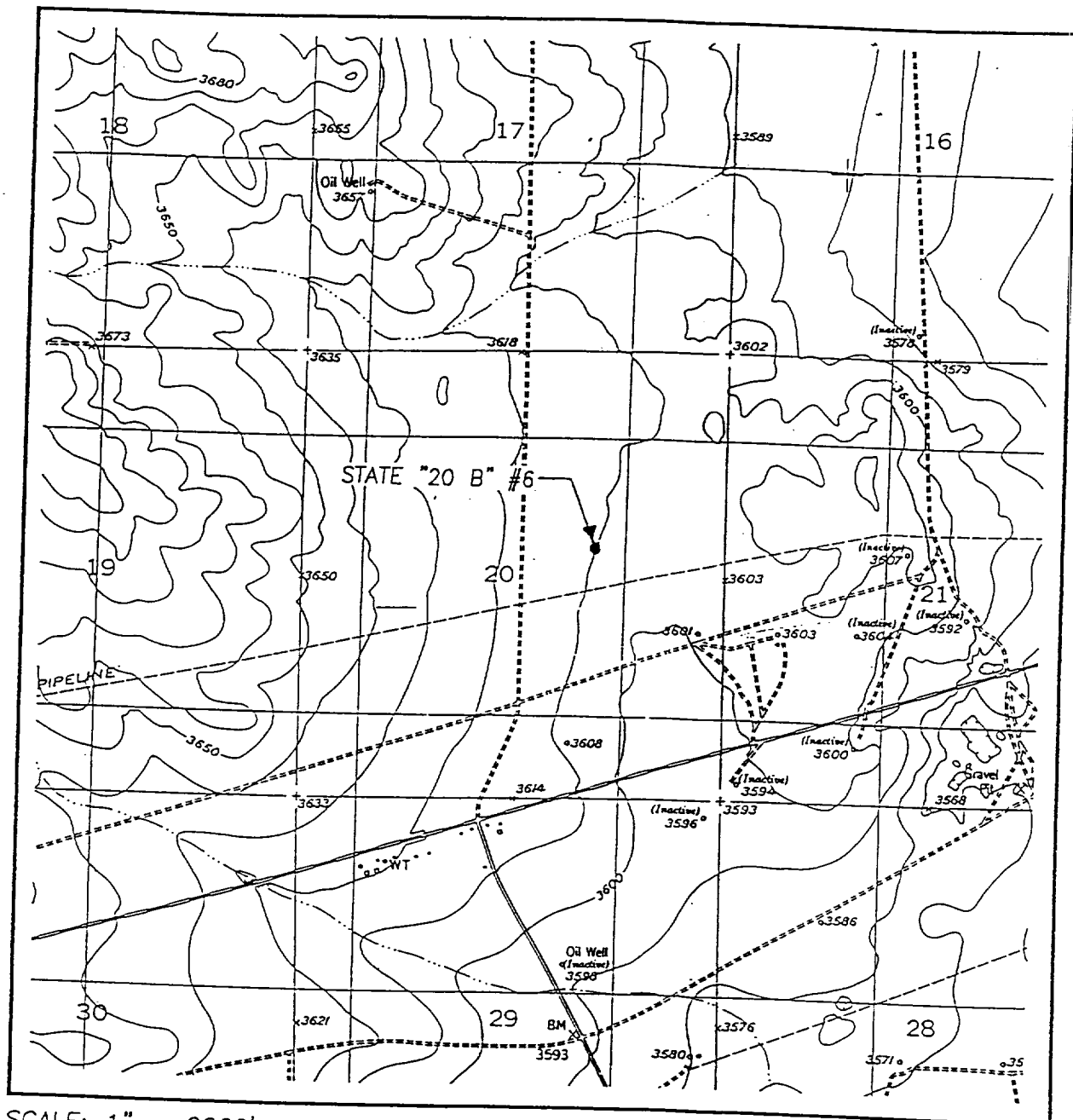


SCALE: 1" = 2 MILES

SEC. 20 TWP. 17-S RGE. 29-E  
SURVEY N.M.P.M.  
COUNTY EDDY  
DESCRIPTION 2310' FNL & 1650' FEL  
ELEVATION 3610  
CLAYTON WILLIAMS  
OPERATOR ENERGY, INC.  
LEASE STATE "20 B"

JOHN WEST SURVEYING  
HOBBS, NEW MEXICO  
(505 393-3117)

# LOCATION VERIFICATION MAP



SCALE: 1" = 2000'

CONTOUR INTERVAL:  
RED LAKE SE, N.M. - 10'

SEC. 20 TWP. 17-S RGE. 29-E

SURVEY N.M.P.M.

COUNTY EDDY

DESCRIPTION 2310' FNL & 1650' FEL

ELEVATION 3610

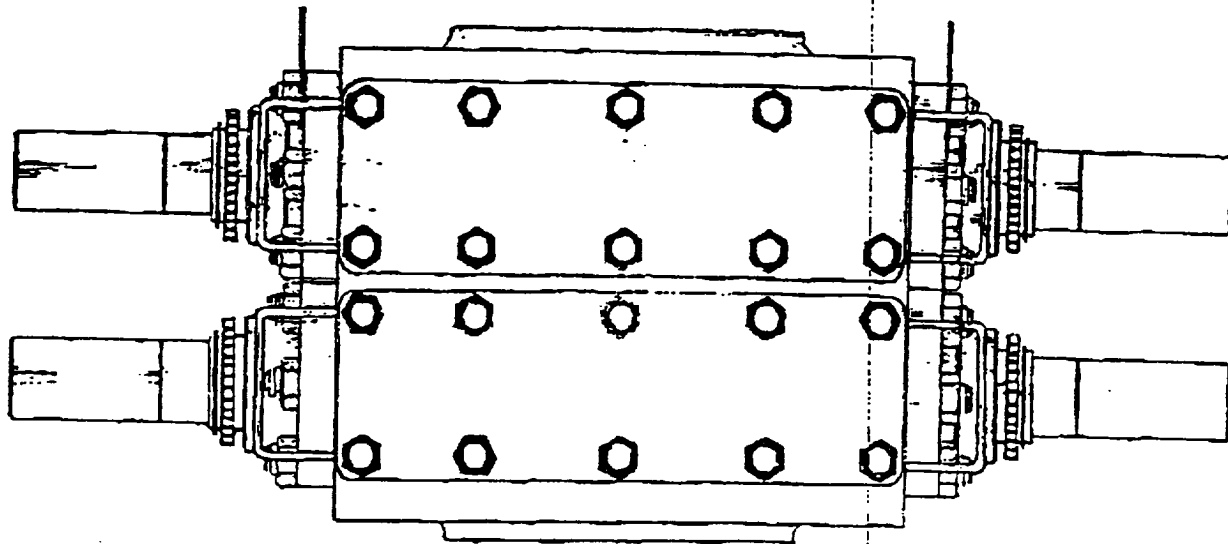
OPERATOR CLAYTON WILLIAMS ENERGY, INC.

LEASE STATE "20 B"

U.S.G.S. TOPOGRAPHIC MAP  
RED LAKE SE, N.M.

JOHN WEST SURVEYING  
HOBBS, NEW MEXICO  
(505 393-3117)

# **MANUAL BOP** **7-1/16" x 3,000#**



## **DIMENSIONS AND WEIGHTS**

MECHANICAL		
Weight	Single (pounds)	2,225#
	Double (pounds)	2,200#
Overall height, less studs	Single (inches)	13"
	Double (inches)	22"
Overall length (inches)		63"
Overall width, less handwheel (inches)		22"
Opening through preventer (inches)		7-1/16"
Working pressure (psi)		3,000#
Test pressure (psi)		6,000#

