

District I  
PO Box 1980, Hobbs, NM 88241-1980

District II  
811 South First, Artesia, NM 88210

District III  
1000 Rio Brazos Rd., Aztec, NM 87410

District IV  
2040 South Pacheco, Santa Fe, NM 87505

State of New Mexico  
Energy, Minerals & Natural Resources Department

OIL CONSERVATION DIVISION  
2040 South Pacheco  
Santa Fe, NM 87505

Form C-101  
Revised October 18, 1994  
Instructions on back  
Submit to Appropriate District Office  
State Lease - 6 Copies  
Fee Lease - 5 Copies

☐ AMENDED REPORT

APPLICATION FOR PERMIT TO DRILL, RE-ENTER, DEEPEN, PLUGBACK, OR ADD A ZONE

Operator Name and Address MARBOB ENERGY CORPORATION P.O. BOX 227 ARTESIA, NM 88210		OGRID Number 14049
		API Number 30-015-31037
Property Code 25462	Property Name BR-549 STATE	Well No. 3

Surface Location

LL or lot no.	Section	Township	Range	Lot Idn	Feet from the	North/South line	Feet from the	East/West Line	County
E	27	17S	29E		1600	NORTH	990	WEST	EDDY

Proposed Bottom Hole Location If Different From Surface

LL or lot no.	Section	Township	Range	Lot Idn	Feet from the	North/South line	Feet from the	East/West Line	County
Proposed Pool 1 EAST EMPIRE YESO					Proposed Pool 2				

Work Type Code N	Well Type Code O	Cable/Rotary R	Lease Type Code S	Ground Level Elevation 3548
Multiple No	Proposed Depth 5000	Formation YESO	Contractor L&M	Spud Date 03-25-00

Proposed Casing and Cement Program

Hole Size	Casing Size	Casing weight/foot	Setting Depth	Sacks of Cement	Estimated TOC
12 1/4"	8 5/8"	24#	350'	350 SX	ATTEMPT TO CIRC surface
7 7/8"	5 1/2"	17#	5000'	1100 SX	SUFFICIENT TO COVER
					200' ABOVE ALL KNOWN
					OIL & GAS HORIZONS

Describe the proposed program. If this application is to DEEPEN or PLUG BACK give the data on the present productive zone and proposed new productive zone. Describe the blowout prevention program, if any. Use additional sheets if necessary.

DRILL 12 1/4" HOLE TO 350', RUN & CMT 8 5/8" CSG, REDUCE HOLE & DRILL TO 5000', RUN & CMT 5 1/2" CSG, PUT WELL ON PRODUCTION

NSL#

Needed in order to produce

I hereby certify that the information given above is true and complete to the best of my knowledge and belief.

Signature: Robin Cockrum  
Printed name: ROBIN COCKRUM

Title: PRODUCTION ANALYST

Date: 03-09-00

Phone: 748-3303

OIL CONSERVATION DIVISION

Approved By: ORIGINAL SIGNED BY TIM W. GUM  
DISTRICT II SUPERVISOR

Title:

Approval Date: 3-21-00

Expiration Date: 3-21-01

Conditions of Approval:  
Attached: ☐

10. 10. 10.

10. 10. 10.

10. 10. 10.

10. 10. 10.

10. 10. 10.

10. 10. 10.

## DISTRICT I

P.O. Box 1980, Hobbs, NM 88241-1980

## State of New Mexico

Energy, Minerals and Natural Resources Department

Form C-102

Revised February 10, 1994

Submit to Appropriate District Office

State Lease - 4 Copies

Fee Lease - 3 Copies

## DISTRICT II

P.O. Drawer DD, Artesia, NM 88211-0719

## DISTRICT III

1000 Rio Brazos Rd., Aztec, NM 87410

## DISTRICT IV

P.O. BOX 2088, SANTA FE, N.M. 87504-2088

## OIL CONSERVATION DIVISION

P.O. Box 2088

Santa Fe, New Mexico 87504-2088

MAR 09 2000

☐ AMENDED REPORT

## WELL LOCATION AND ACREAGE DEDICATION PLAT

API Number	Pool Code 96610	Pool Name EAST EMPIRE YESO
Property Code	Property Name BR-549 STATE	Well Number 3
GRID No. 14049	Operator Name MARBOB ENERGY CORPORATION	Elevation 3548

## Surface Location

UL or lot No. E	Section 27	Township 17 S	Range 29 E	Lot Idn	Feet from the 1600	North/South line NORTH	Feet from the 990	East/West line WEST	County EDDY
--------------------	---------------	------------------	---------------	---------	-----------------------	---------------------------	----------------------	------------------------	----------------

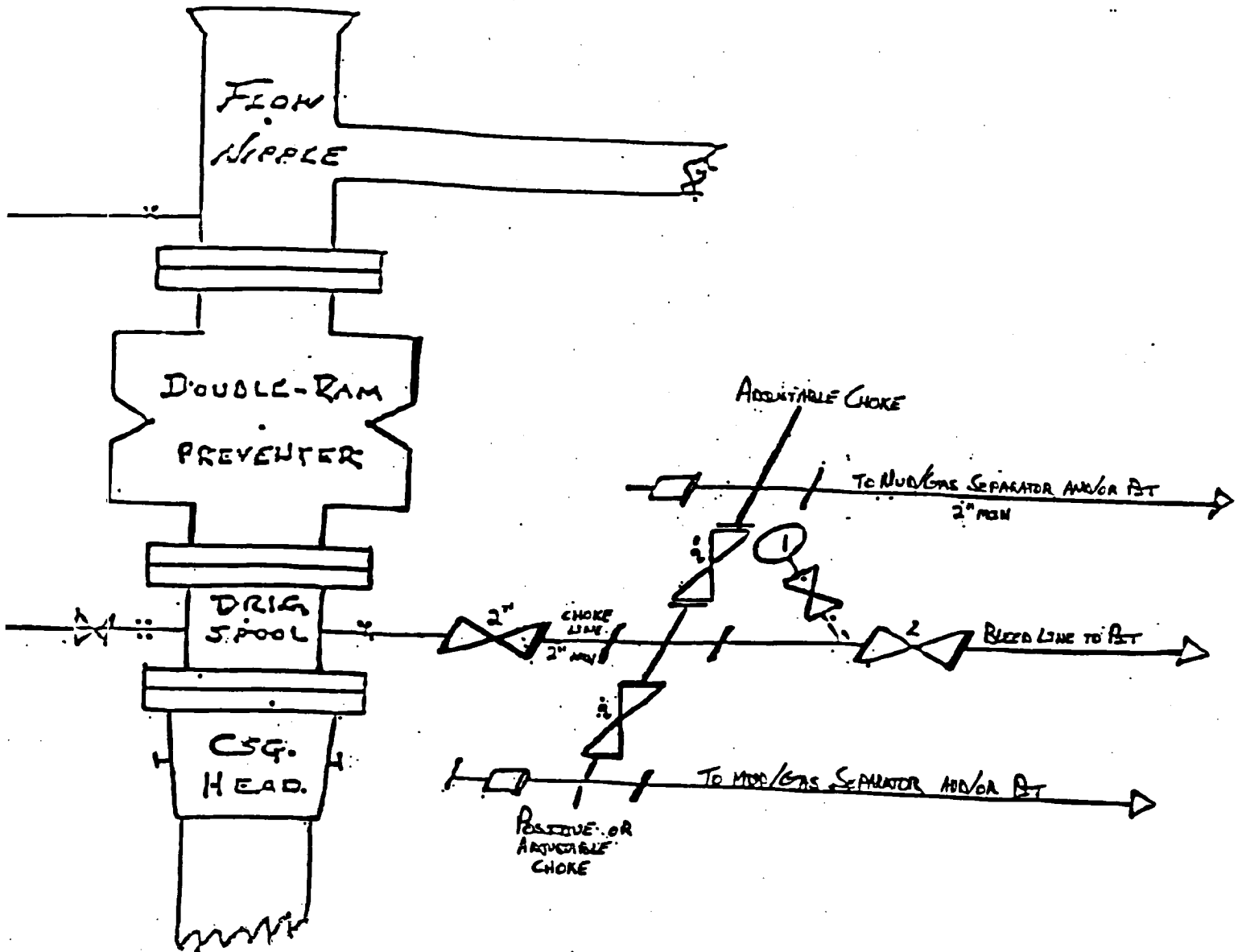
## Bottom Hole Location If Different From Surface

UL or lot No.	Section	Township	Range	Lot Idn	Feet from the	North/South line	Feet from the	East/West line	County
Dedicated Acres 40	Joint or Infill	Consolidation Code	Order No.						

NO ALLOWABLE WILL BE ASSIGNED TO THIS COMPLETION UNTIL ALL INTERESTS HAVE BEEN CONSOLIDATED  
OR A NON-STANDARD UNIT HAS BEEN APPROVED BY THE DIVISION

	<b>OPERATOR CERTIFICATION</b> I hereby certify the the information contained herein is true and complete to the best of my knowledge and belief. <u>Robin Cockrum</u> Signature ROBIN COCKRUM Printed Name PRODUCTION ANALYST Title 3/9/00 Date	
	<b>SURVEYOR CERTIFICATION</b> I hereby certify that the well location shown on this plat was plotted from field notes of actual surveys made by me or under my supervision, and that the same is true and correct to the best of my belief. MARCH 6, 2000 Date Surveyed Signature & Seal of Professional Surveyor <u>Gary J. Eidson</u> 3/8/2000 00-11-0307 Certificate No. RONALD J. EIDSON 3239 GARY EIDSON 1264 MACON McDONALD 1285	

# BLow OUT PREVENTER AND CHOKE MANIFOLD



10"/900 Cameron SS Space Saver  
3000# Working Pressure  
3000# Working Pressure Choke Manifold