

UNITED STATES  
DEPARTMENT OF THE INTERIOR  
BUREAU OF LAND MANAGEMENT

SUBMIT IN TRIPLICATE\*  
(Other instructions on  
reverse side)

FORM APPROVED  
OMB NO. 1004-0136  
Expires: February 28, 1995

APPLICATION FOR PERMIT TO DRILL OR DEEPEN

1a. TYPE OF WORK

DRILL ☒

DEEPEN ☐

b. TYPE OF WELL

OIL  
WELL ☒

GAS  
WELL ☐

OTHER

SINGLE  
ZONE ☐

MULTIPLE  
ZONE ☐

2. NAME OF OPERATOR

MARBOB ENERGY CORPORATION

3. ADDRESS AND TELEPHONE NO.

P.O. BOX 227, ARTESIA, NM 88210 505-748-3303

4. LOCATION OF WELL (Report location clearly and in accordance with any State requirements.\*)

At surface 1980 FNL 1295 FEL

At proposed prod. zone

SAME

Unit H

14. DISTANCE IN MILES AND DIRECTION FROM NEAREST TOWN OR POST OFFICE\*

EAST OF ARTESIA ON HWY 82 APPX 21.6 MILES

15. DISTANCE FROM PROPOSED\*

LOCATION TO NEAREST  
PROPERTY OR LEASE LINE, FT  
(Also to nearest drig. unit line, if any)

1295'

16. NO. OF ACRES IN LEASE

1480

17. NO. OF ACRES ASSIGNED  
TO THIS WELL

40

18. DISTANCE FROM PROPOSED LOCATION\*  
TO NEAREST WELL, DRILLING, COMPLETED,  
OR APPLIED FOR, ON THIS LEASE, FT.

19. PROPOSED DEPTH

5000'

20. ROTARY OR CABLE TOOLS

ROTARY

21. ELEVATIONS (Show whether DF, RT, or GR)

3625' GR

22. APPROX. DATE WORK WILL START\*

03/16/00

23. PROPOSED CASING AND CEMENTING PROGRAM

SIZE OF HOLE	GRADE, SIZE OF CASING	WEIGHT PER FOOT	SETTING DEPTH	QUANTITY OF CEMENT
12 1/4"	J-55, 8 5/8"	24#	350'	300 SX, CIRC
7 7/8"	J-55, 5 1/2"	17#	5000'	SUFFICIENT TO COVER 200' ABOVE ALL KNOWN O&G HORIZONS

PAY ZONE WILL BE SELECTIVELY PERFORATED AND STIMULATED AS NEEDED FOR OPTIMUM PRODUCTION

ATTACHED ARE: 1. ACREAGE DEDICATION PLAT  
2. SUPPLEMENTAL DRILLING DATA  
3. SURFACE USE PLAN

APPROVAL SUBJECT TO  
GENERAL REQUIREMENTS AND  
SPECIAL STIPULATIONS  
ATTACHED

IN ABOVE SPACE DESCRIBE PROGRAM: If proposal is to deepen, give data on present productive zone and proposed new productive zone. If proposal is to drill or deepen directionally, give pertinent data on subsurface locations and measured and true vertical depths. Give blowout preventer program, if any.

24.

SIGNED

Robin Cockburn

TITLE PRODUCTION ANALYST

DATE 02/15/00

(This space for Federal or State office use)

PERMIT NO.

APPROVAL DATE

Application approval does not warrant or certify that the applicant holds legal or equitable title to those rights in the subject lease which would entitle the applicant to conduct operations thereon.  
CONDITIONS OF APPROVAL, IF ANY:

Acting

Assistant Field Manager,  
Lands And Minerals

APPROVED BY

TITLE

DATE

MAR 16 2000

\*See Instructions On Reverse Side

Title 18 U.S.C. Section 1001, makes it a crime for any person knowingly and willfully to make to any department or agency of the United States any false, fictitious or fraudulent statements or representations as to any matter within its jurisdiction.

RECEIVED  
FEB 18 2000  
BLM  
ROSWELL, NM

DISTRICT II  
P.O. Drawer DD, Artesia, NM 88211-0719

DISTRICT III  
1000 Rio Brazos Rd., Aztec, NM 87410

DISTRICT IV  
P.O. BOX 2088, SANTA FE, N.M. 87504-2088

**OIL CONSERVATION DIVISION**  
P.O. Box 2088  
Santa Fe, New Mexico 87504-2088

**JUN 21 1996**

☐ AMENDED REPORT

**WELL LOCATION AND ACREAGE DEDICATION PLAT**

API Number	Pool Code 28509	Pool Name GRBG JACKSON SR Q GRBG SA
Property Code 6505	Property Name M. DODD B <del>FEDERAL</del>	Well Number 68
OGRID No. 14049	Operator Name MARBOB ENERGY CORPORATION	Elevation 3625

**Surface Location**

UL or lot No.	Section	Township	Range	Lot Idn	Feet from the	North/South line	Feet from the	East/West line	County
H	14	17 S	29 E		1980	NORTH	1295	EAST	EDDY

**Bottom Hole Location If Different From Surface**

UL or lot No.	Section	Township	Range	Lot Idn	Feet from the	North/South line	Feet from the	East/West line	County

Dedicated Acres 40	Joint or Infill	Consolidation Code	Order No.
-----------------------	-----------------	--------------------	-----------

**NO ALLOWABLE WILL BE ASSIGNED TO THIS COMPLETION UNTIL ALL INTERESTS HAVE BEEN CONSOLIDATED OR A NON-STANDARD UNIT HAS BEEN APPROVED BY THE DIVISION**

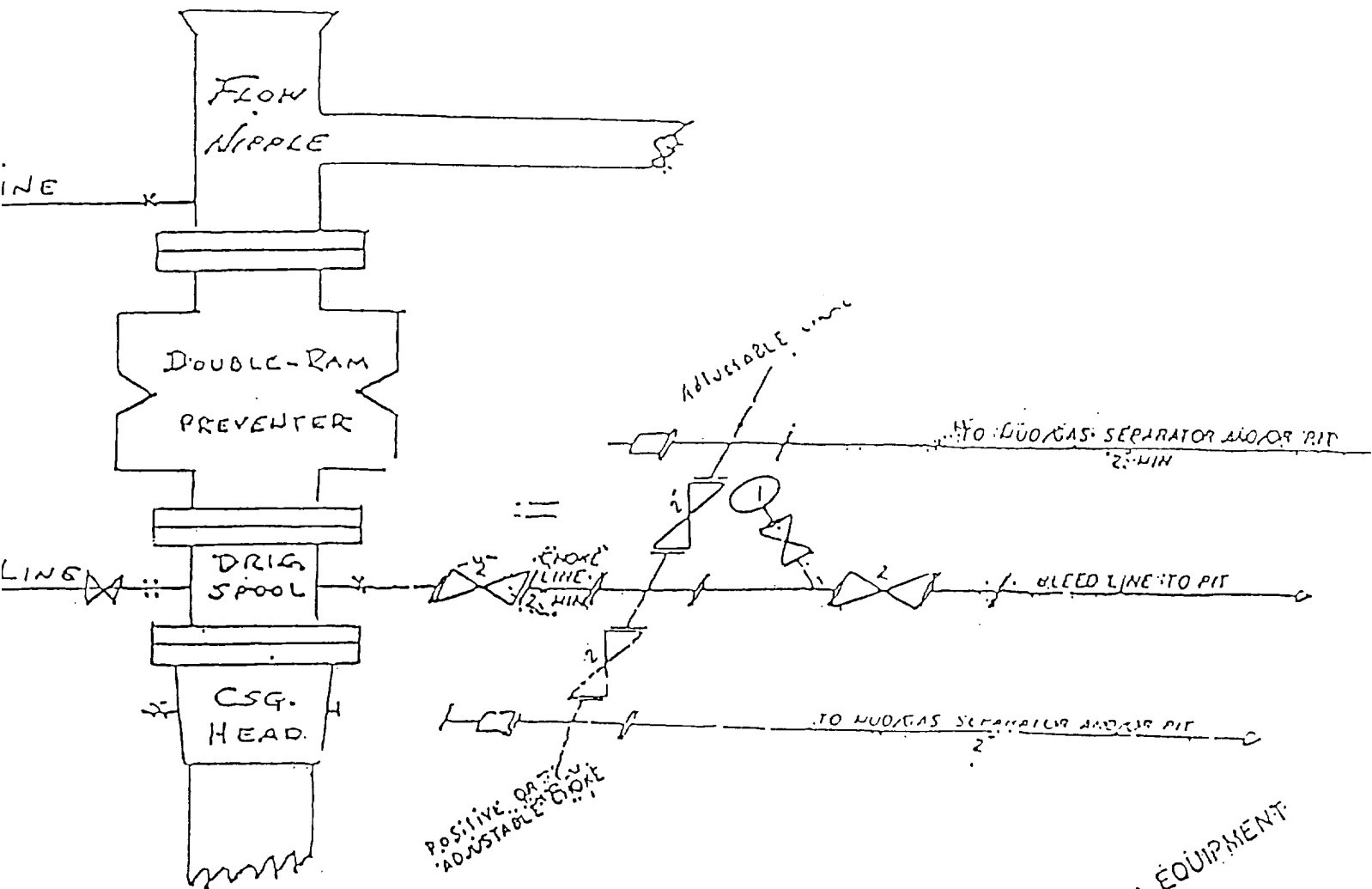
	<b>OPERATOR CERTIFICATION</b> I hereby certify the the information contained herein is true and complete to the best of my knowledge and belief. <i>Rhonda Nelson</i> Signature RHONDA NELSON Printed Name PRODUCTION CLERK Title 11/1/96 Date	
	<b>SURVEYOR CERTIFICATION</b> I hereby certify that the well location shown on this plat was plotted from field notes of actual surveys made by me or under my supervision, and that the same is true and correct to the best of my belief. JUNE 18, 1996 Date Surveyed Signature & Seal of Professional Surveyor <i>Ronald J. Eidson</i> 6/20/96 86-11-0303 Certificate No. 676 RONALD J. EIDSON 3239 GARY EIDSON 12641	
	CDG	
	6/20/96	



EXHIBIT #1

# B U P & C JOKE MANIFOLD

10"/900 Cameron SS Space Saver  
3000# Working Pressure  
3,000# Working Pressure Choke Manifold



Marbob Energy Corporation

Mary Dodd B Federal No. 68  
1980' FNL and 1295' FEL  
Section 14-17S-29E  
Eddy County, New Mexico  
Exhibit #1



Attachment to Exhibit #1  
NOTES REGARDING THE BLOWOUT PREVENTERS

1. Drilling nipple to be so constructed that it can be removed without use of a welder through rotary table opening, with minimum I.D. equal to preventer bore.
2. Wear ring to be properly installed in head.
3. Blow out preventer and all fittings must be in good condition, 3000 psi W.P. minimum.
4. All fittings to be flanged.
5. Safety valve must be available on rig floor at all times with proper connections, valve to be full bore 3000 psi W.P. minimum.
6. All choke and fill lines to be securely anchored, especially ends of choke lines.
7. Equipment through which bit must pass shall be at least as large as the diameter of the casing being drilled through.
8. Kelly cock on kelly.
9. Extension wrenches and hand wheels to be properly installed.
10. Blow out preventer control to be located as close to driller's position as feasible.
11. Blow out preventer closing equipment to include minimum 40 gallon accumulator, two independent sources of pump power on each closing unit installation, and meet all API specifications.





## DRILLING PROGRAM

Attached to Form 3160-3  
Marbob Energy Corporation  
Mary Dodd B Federal No. 68  
1980' FNL and 1295' FEL  
Section 14-17S-29E  
Eddy County, New Mexico

1. Geologic Name of Surface Formation:

Permian

2. Estimated Tops of Important Geologic Markers:

Permian	Surface	Queen	1815'
Salt	360'	Grayburg	2140'
Base of Salt	780'	San Andres	2510'
Yates	930'	Glorietta	3900'
Seven Rivers	1145'		

3. Estimated Depths of Anticipated Fresh Water, Oil or Gas:

Upper Permian Sands	100'	Fresh Water
Yates	930'	Oil
Seven Rivers	1145'	Oil
Queen	1815'	Oil
Grayburg	2140'	Oil
San Andres	2510'	Oil
Glorietta	3900'	Oil

No other formations are expected to give up oil, gas, or fresh water in measurable quantities. The surface fresh water sands will be protected by setting 8 5/8 casing at 350' and circulating cement back to surface. Any shallower zones above TD which contain commercial quantities of oil and/or gas will have cement circulated across them by inserting a float shoe joint into the 5 1/2" production casing which will be run at TD.

4. Casing Program:

<u>Hole Size</u>	<u>Interval</u>	<u>OD csg</u>	<u>Weight, Grade, Jt. Cond. Type</u>			
12 1/4"	0 - 350	8 5/8"	24#	J-55	LTC NEW	R-3
7 7/8"	0 - 5000	5 1/2"	17#	J-55	LTC NEW	R-3

