

District I
1625 N. French Dr., Hobbs, NM 88240
District II
811 South First, Artesia, NM 88210
District III
1000 Rio Brazos Road, Aztec, NM 87410
District IV
2040 South Pacheco, Santa Fe, NM 87505

State of New Mexico
Energy Minerals and Natural Resources

Oil Conservation Division
2040 South Pacheco
Santa Fe, NM 87505

Form C-101
Revised March 17, 1999

Submit to appropriate District Office
State Lease - 6 Copies
Fee Lease - 5 Copies

☐ AMENDED REPORT

APPLICATION FOR PERMIT TO DRILL, RE-ENTER, DEEPEN, PLUGBACK, OR ADD A ZONE

Operator Name and Address Clayton Williams Energy, Inc. Six Desta Drive, Suite 3000 Midland, TX 79705		OGRID Number 25706
Property Code 25235		API Number 30 - 015 - 31052
Property Name STATE '20B'		Well No. 7

Surface Location

UL or lot no.	Section	Township	Range	Lot Idn	Feet from the	North/South line	Feet from the	East/West line	County
B	20	17 S	29 E		330	north	2310	east	Eddy

Proposed Bottom Hole Location If Different From Surface

UL or lot no.	Section	Township	Range	Lot Idn	Feet from the	North/South line	Feet from the	East/West line	County
Proposed Pool 1 Empire, East (Yeso) (96610)					Proposed Pool 2 Grayburg Jackson -7R's,QN,GB,SA (28509)				

Work Type Code N	Well Type Code O	Cable/Rotary R	Lease Type Code S	Ground Level Elevation 3617'
Multiple N	Proposed Depth 5000'	Formation Yeso Sands	Contractor Key Energy Drilling	Spud Date approx. 4/3/00

Minimum WOC time / **8 hrs.**

Proposed Casing and Cement Program

Hole Size	Casing Size	Casing weight/foot	Setting Depth	Sacks of Cement	Estimated TOC
12-1/4"	8-5/8"	24#	450'	300	surface
7-7/8"	5-1/2"	17#	5000'	880	surface

Describe the proposed program. If this application is to DEEPEN or PLUG BACK, give the data on the present productive zone and proposed new productive zone.

Describe the blowout prevention program, if any. Use additional sheets if necessary.

- Drill 12-1/4" hole to 450'. Run and set 450' of 8-5/8" 24# J-55 ST&C casing. Cement with 300 sx. of Cl. "C" + 2% S1 (CaCl2) + 1/4#/sx. celloflake. Circulate cement to surface.
- Drill 7-7/8" hole to 5000'. Run and set 5000' of 5-1/2" 17# J-55 ST&C casing. Cement with 360 sx. Cl. "C" 50/50 Poz + 2%D-20 + 1% B28 + 0.2% D112 FLAC + 0.2% D65 TIC + 3#/sx. D42 + 1/4#/sx. celloflake, tail with 520 sx. Cl. "C" 50/50 Poz + 2% D20 + 1% B28 + 0.2% D112FLAC + 0.2% D65TIC + 5# D42/Sx. + 1/4#/sx. celloflake. Circulate cement to surface.

I hereby certify that the information given above is true and complete to the best of my knowledge and belief.

Signature: *Betsy Luna*

Printed name: **Betsy Luna**

Title: **Regulatory Analyst**

Date: **3/24/2000**

Phone: **(915) 682-6324**

OIL CONSERVATION DIVISION

Approved by: **ORIGINAL SIGNED BY TIM W. GUM
DISTRICT II SUPERVISOR**

Title:

Approval Date: **APR 03 2000**

Expiration Date: **APR 03 2001**

Conditions of Approval:

Attached ☐

Journal of Management Inquiry, Vol. 17 No. 4, December 2008
DOI: 10.1177/1056492608322606
© The Author(s) 2008

25 10 94

2. *Phylogenetic relationships*—The phylogenetic relationships among the 10 species were determined using the maximum parsimony method. The analysis was performed using the program PAUP 4.0 (Nelson & OlSEN, 1992). The heuristic search was performed using 1000 random addition sequences. The tree was collapsed using the parsimony criterion. The support for the nodes was determined using the bootstrap method (1000 replicates). The tree was rooted using *Phytophthora* as the outgroup. The tree was drawn using the program TreeView 1.2.2 (R. M. Page, 1996).

DISTRICT I
P.O. Box 1980, Hobbs, NM 88241-1980

State of New Mexico
Energy, Minerals and Natural Resources Department

Form C-102
Revised February 10, 1994
Submit to Appropriate District Office
State Lease - 4 Copies
Fee Lease - 3 Copies

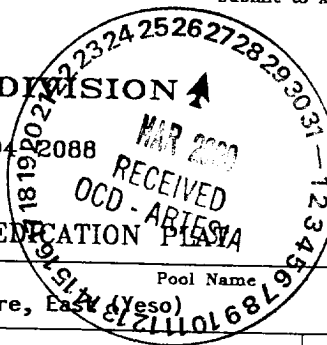
DISTRICT II
P.O. Drawer DD, Artesia, NM 88211-0710

DISTRICT III
1000 Rio Brasos Rd., Aztec, NM 87410

DISTRICT IV
P.O. BOX 2088, SANTA FE, N.M. 87504-2088

OIL CONSERVATION DIVISION

P.O. Box 2088
Santa Fe, New Mexico 87504-2088



AMENDED REPORT

WELL LOCATION AND ACREAGE DEDICATION PLAT

API Number	Pool Code 96610	Pool Name Empire, East (yes)
Property Code 25235	Property Name STATE 20 "B"	Well Number 7
OGRID No. 25706	Operator Name CLAYTON WILLIAMS ENERGY, INC.	Elevation 3617

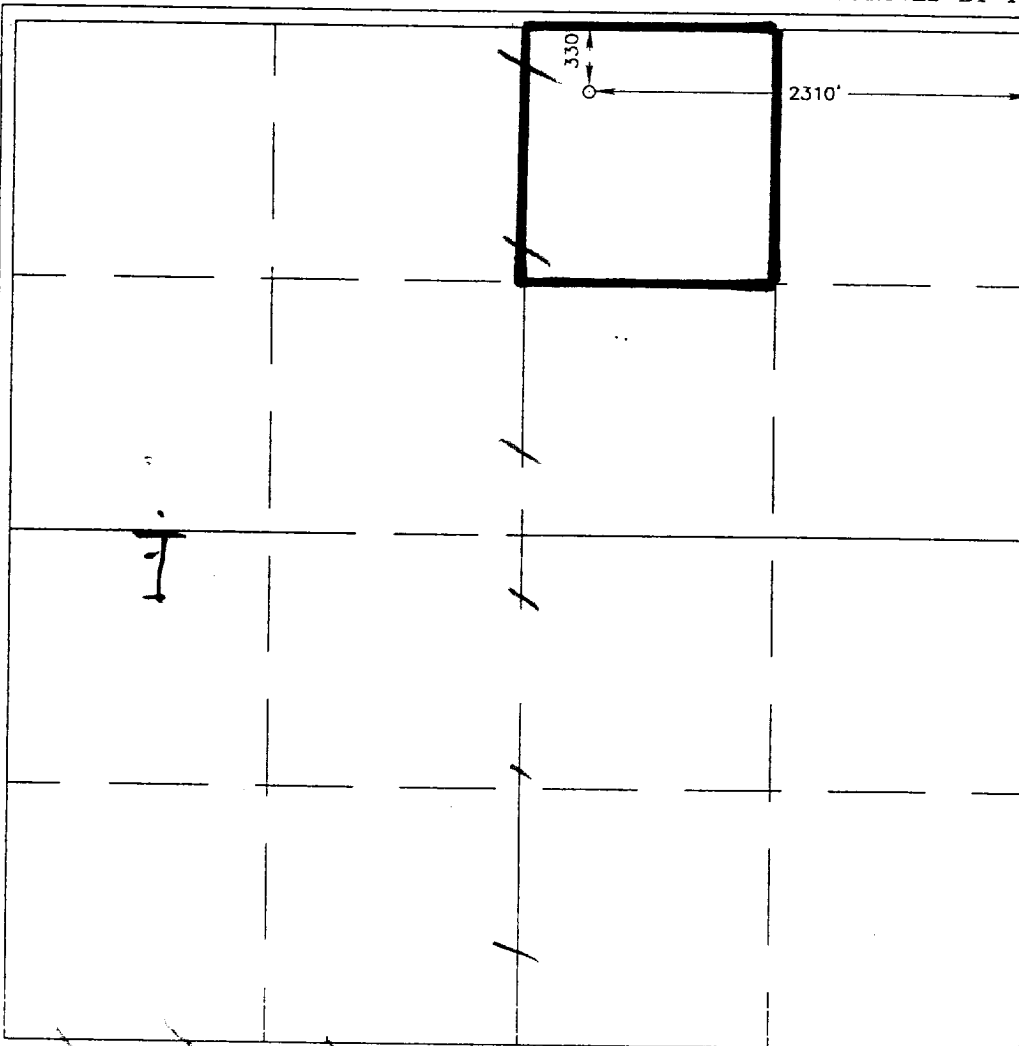
Surface Location

UL or lot No. B	Section 20	Township 17 S	Range 29 E	Lot Idn	Feet from the 330	North/South line NORTH	Feet from the 2310	East/West line EAST	County EDDY
--------------------	---------------	------------------	---------------	---------	----------------------	---------------------------	-----------------------	------------------------	----------------

Bottom Hole Location If Different From Surface

UL or lot No.	Section	Township	Range	Lot Idn	Feet from the	North/South line	Feet from the	East/West line	County
Dedicated Acres 40	Joint or Infill	Consolidation Code	Order No.						

NO ALLOWABLE WILL BE ASSIGNED TO THIS COMPLETION UNTIL ALL INTERESTS HAVE BEEN CONSOLIDATED
OR A NON-STANDARD UNIT HAS BEEN APPROVED BY THE DIVISION



OPERATOR CERTIFICATION

I hereby certify the the information
contained herein is true and complete to the
best of my knowledge and belief.

Betsy Luna
Signature

Betsy Luna
Printed Name

Regulatory Analyst
Title

03-24-2000
Date

03-24-2000
Date

SURVEYOR CERTIFICATION

I hereby certify that the well location shown
on this plat was plotted from field notes of
actual surveys made by me or under my
supervision, and that the same is true and
correct to the best of my belief.

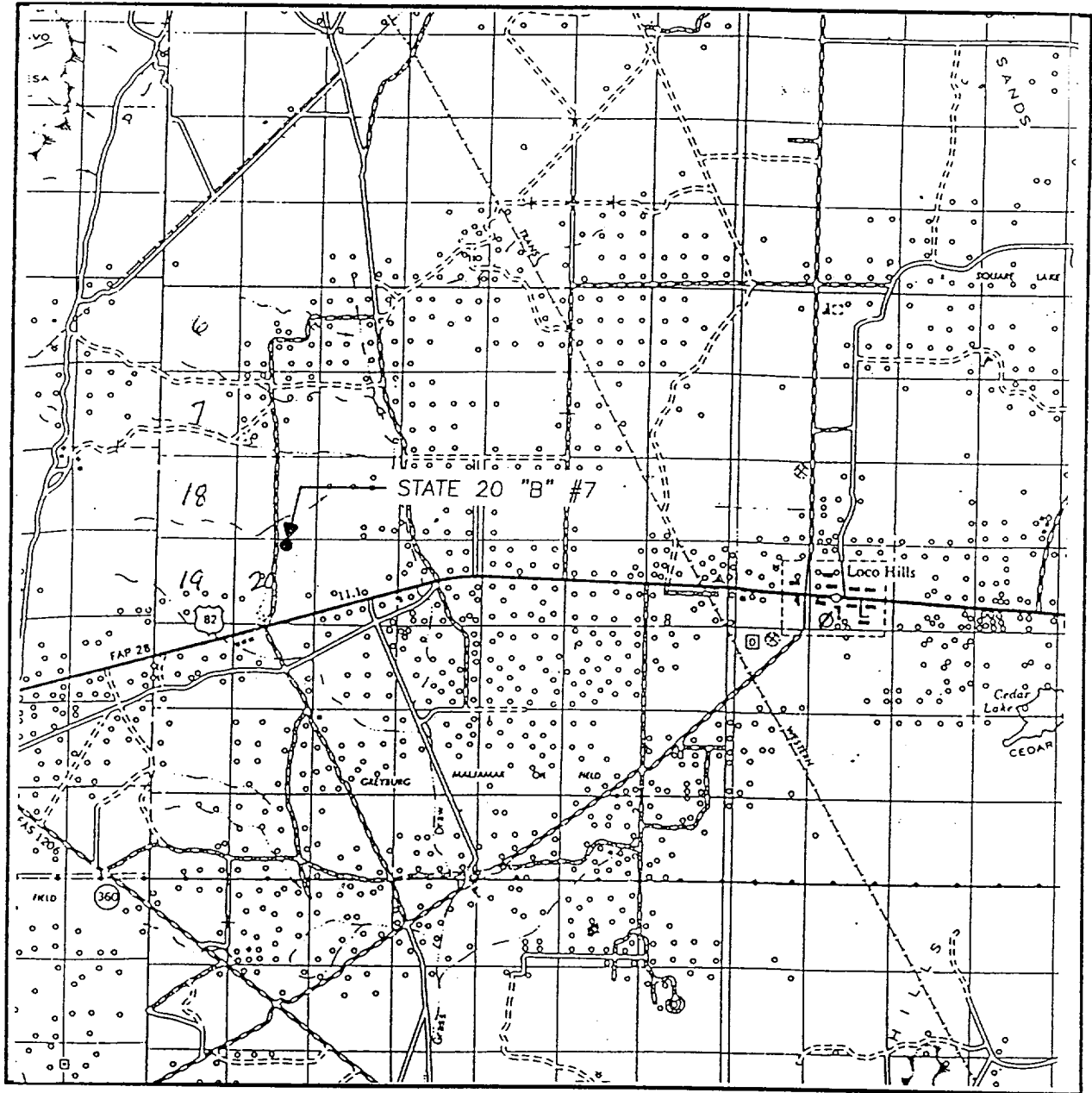
MARCH 14, 2000

Date Surveyed
Signature & Seal of
Professional Surveyor

Ronald J. Eidson
3/15/2000
68-11-0339

Certificate No. RONALD J. EIDSON 3239
GARY EIDSON 12641
MACON McDONALD 12185

VICINITY MAP



SCALE: 1" = 2 MILES

SEC. 20 TWP. 17-S RGE. 29-E

SURVEY N.M.P.M.

COUNTY EDDY

DESCRIPTION 330' FNL & 2310' FEL

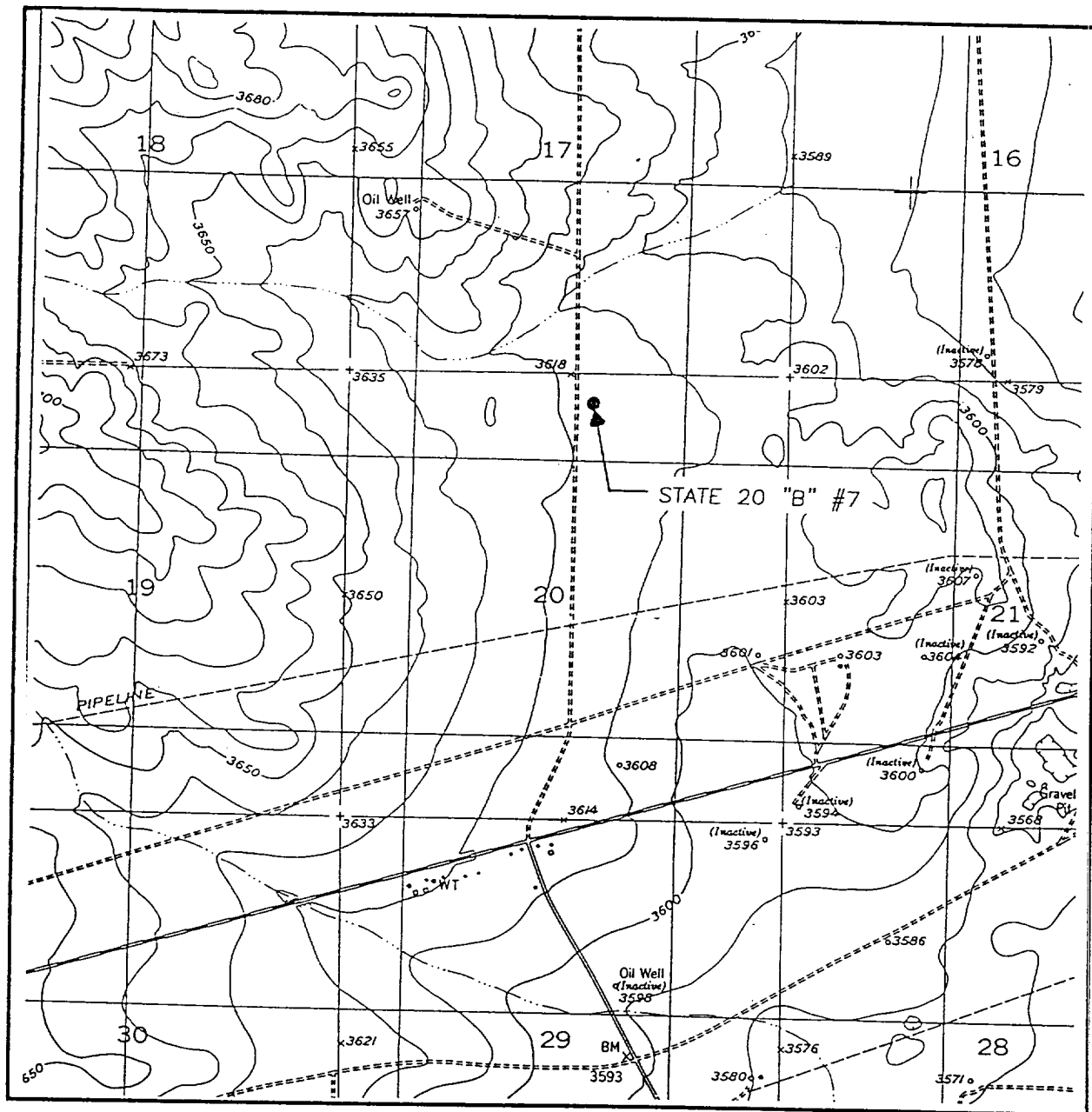
ELEVATION 3617

OPERATOR CLAYTON WILLIAMS
ENERGY, INC.

LEASE STATE 20 "B"

JOHN WEST SURVEYING
HOBBS, NEW MEXICO
(505 393-3117)

LOCATION VERIFICATION MAP



SCALE: 1" = 2000'

CONTOUR INTERVAL:
RED LAKE SE - 10'

SEC. 20 TWP. 17-S RGE. 29-E

SURVEY N.M.P.M.

COUNTY EDDY

DESCRIPTION 330' FNL & 2310' FEL

ELEVATION 3617

OPERATOR CLAYTON WILLIAMS
ENERGY, INC.

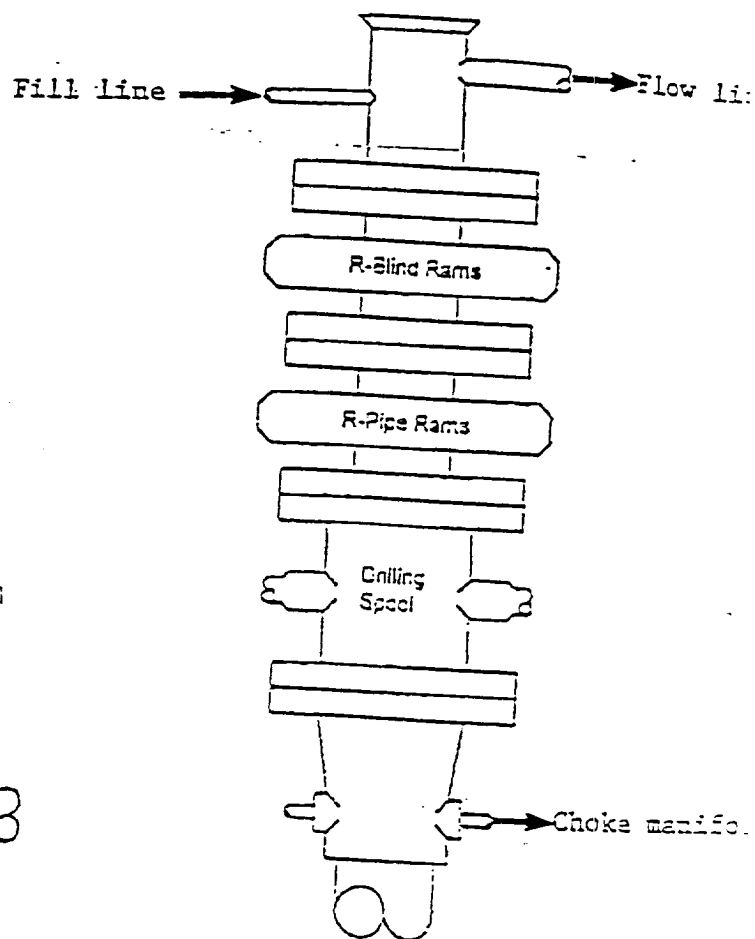
LEASE STATE 20 "B"

U.S.G.S. TOPOGRAPHIC MAP

RED LAKE SE, N.M.

JOHN WEST SURVEYING
HOBBS, NEW MEXICO
(505 393-3117)

BLOWOUT PREVENTER SYSTEM



Type 900 Series
3000 psi WP

Choke Manifold Assembly for 3M WP System

