

District I
1625 N. French Dr., Hobbs, NM 88240
District II
811 South First, Artesia, NM 88210
District III
1000 Rio Brazos Road, Aztec, NM 87410
District IV
2040 South Pacheco, Santa Fe, NM 87505

State of New Mexico
Energy Minerals and Natural Resources

Oil Conservation Division
2040 South Pacheco
Santa Fe, NM 87505

Form C-101
Revised March 17, 1999
Submit to appropriate District Office
State Lease - 6 Copies
Fee Lease - 5 Copies

☐ AMENDED REPORT

APPLICATION FOR PERMIT TO DRILL, RE-ENTER, DEEPEN, PLUGBACK, OR ADD A ZONE

¹ Operator Name and Address Clayton Williams Energy, Inc. Six Desta Drive, Suite 3000 Midland, TX 79705		² OGRID Number 25706
		³ API Number 30 - 015-31053
³ Property Code 25235	Property Name STATE "20B"	⁶ Well No. 8

⁷ Surface Location

UL or lot no.	Section	Township	Range	Lot Idn	Feet from the	North/South line	Feet from the	East/West line	County
G	20	17 S	29 E		1650	north	2310	east	Eddy

⁸ Proposed Bottom Hole Location If Different From Surface

UL or lot no.	Section	Township	Range	Lot Idn	Feet from the	North/South line	Feet from the	East/West line	County

⁹ Proposed Pool 1

Grayburg Jackson -7R's,QN,GB,SA (28509)

¹⁰ Proposed Pool 2

¹¹ Work Type Code P	¹² Well Type Code O	¹³ Cable/Rotary R	¹⁴ Lease Type Code S	¹⁵ Ground Level Elevation 3613'
¹⁶ Multiple N	¹⁷ Proposed Depth 3775'	¹⁸ Formation Grayburg	¹⁹ Contractor Unknown	²⁰ Spud Date Upon approval

²¹ Proposed Casing and Cement Program

Hole Size	Casing Size	Casing weight/foot	Setting Depth	Sacks of Cement	Estimated TOC

²² Describe the proposed program. If this application is to DEEPEN or PLUG BACK, give the data on the present productive zone and proposed new productive zone.

Describe the blowout prevention program, if any. Use additional sheets if necessary.

It is proposed to set a Retrievable Bridge Plug @ $\pm 3775'$ and Temporarily Abandon the Yeso formation (existing perfs @ 3794'-4138', 38 holes).

Perforate and stimulate Grayburg-San Andres formation: Lower San Andres 3420' - 3737' (OA), 20 holes, and Upper San Andres 2434' - 3045' (OA), 22 holes, and Grayburg 1906' - 2344' (OA), 27 holes.

²³ I hereby certify that the information given above is true and complete to the best of my knowledge and belief. Signature: <i>Betsy Luna</i> Printed name: Betsy Luna Title: Engineering Technician Date: 7/20/2000		OIL CONSERVATION DIVISION ORIGINAL SIGNED BY TIM W. GUM Approved by: DISTRICT II SUPERVISOR <i>BGG</i> Title: Approval Date: JUL 25 2000 Expiration Date: JUL 25 2001 Conditions of Approval: Attached <input type="checkbox"/>	
Phone: (915) 682-6324			

DISTRICT II
P.O. Drawer DD, Artesia, NM 88211-0719

DISTRICT III
1000 Rio Brazos Rd., Aztec, NM 87410

DISTRICT IV
P.O. Box 2068, Santa Fe, N.M. 87504-2068

OIL CONSERVATION DIVISION
P.O. Box 2088
Santa Fe, New Mexico 87504-2088

☐ AMENDED REPORT

WELL LOCATION AND ACREAGE DEDICATION PLAT

API Number 30-015-31053	Pool Code 28509	Pool Name Grayburg Jackson-7R's, QN, BG, SA
Property Code 25235	Property Name STATE 20 "B"	Well Number 8
OGRID No. 25706	Operator Name CLAYTON WILLIAMS ENERGY, INC.	Elevation 3613

Surface Location

UL or lot No. G	Section 20	Township 17 S	Range 29 E	Lot Idn	Feet from the 1650	North/South line NORTH	Feet from the 2310	East/West line EAST	County EDDY
--------------------	---------------	------------------	---------------	---------	-----------------------	---------------------------	-----------------------	------------------------	----------------

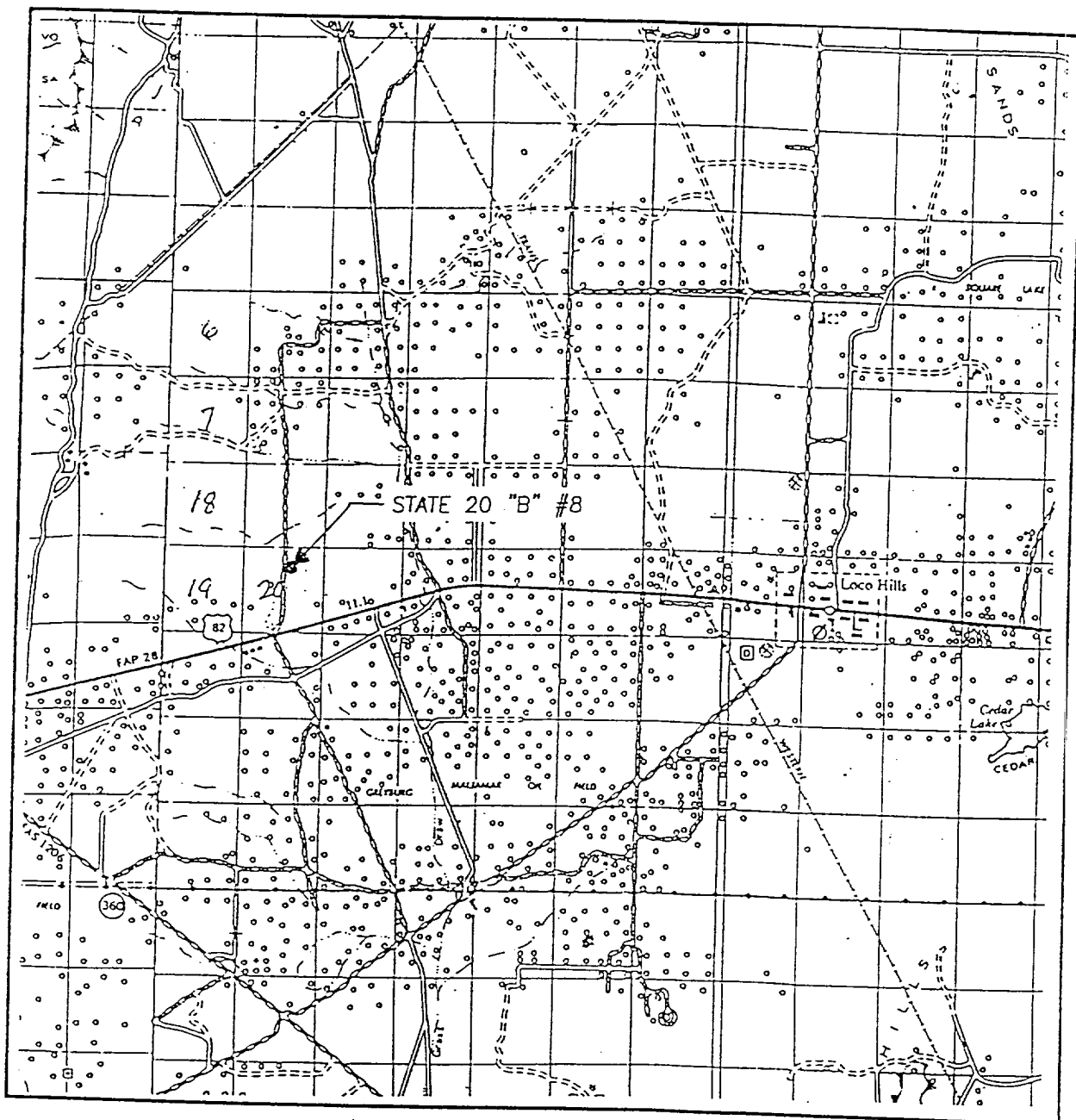
Bottom Hole Location If Different From Surface

UL or lot No.	Section	Township	Range	Lot Idn	Feet from the	North/South line	Feet from the	East/West line	County
Dedicated Acres 40	Joint or Infill	Consolidation Code	Order No.						

NO ALLOWABLE WILL BE ASSIGNED TO THIS COMPLETION UNTIL ALL INTERESTS HAVE BEEN CONSOLIDATED
OR A NON-STANDARD UNIT HAS BEEN APPROVED BY THE DIVISION

	OPERATOR CERTIFICATION I hereby certify the the information contained herein is true and complete to the best of my knowledge and belief. Signature Betsy Luna Printed Name Engineering Technician Title 07-20-2000 Date
	SURVEYOR CERTIFICATION I hereby certify that the well location shown on this plat was plotted from field notes of actual surveys made by me or under my supervision, and that the same is true and correct to the best of my belief. MARCH 14, 2000 Date Surveyed Signature & Seal of Professional Surveyor Certificate No. RONALD J. EIDSON 3239 GARY EIDSON 12641 MACON McDONALD 12185

VICINITY MAP



SCALE: 1" = 2 MILES

SEC. 20 TWP. 17-S RGE. 29-E

SURVEY N.M.P.M.

COUNTY EDDY

DESCRIPTION 1650' FNL & 2310' FEL

ELEVATION 3613

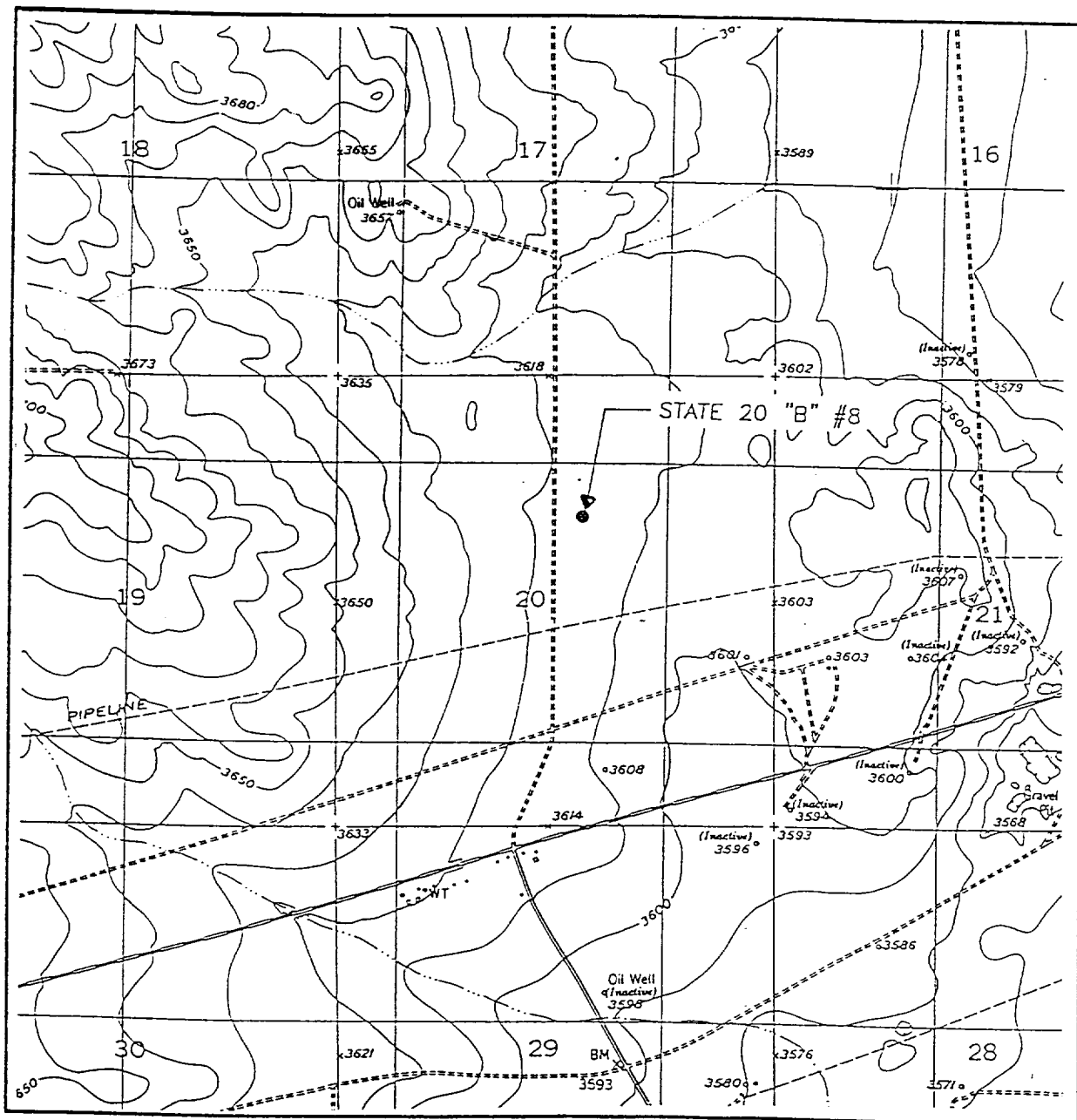
OPERATOR CLAYTON WILLIAMS ENERGY, INC.

LEASE STATE 20 "B"

JOHN WEST SURVEYING
HOBBS, NEW MEXICO
▲(505 393-3117

RECEIVED
OCD ARTESIA

LOCATION VERIFICATION MAP



SCALE: 1" = 2000'

CONTOUR INTERVAL:
RED LAKE SE - 10'

SEC. 20 TWP. 17-S RGE. 29-E

SURVEY N.M.P.M.

COUNTY EDDY

DESCRIPTION 1650' FNL & 2310' FEL

ELEVATION 3613

OPERATOR CLAYTON WILLIAMS
ENERGY, INC.

LEASE STATE 20 "B"

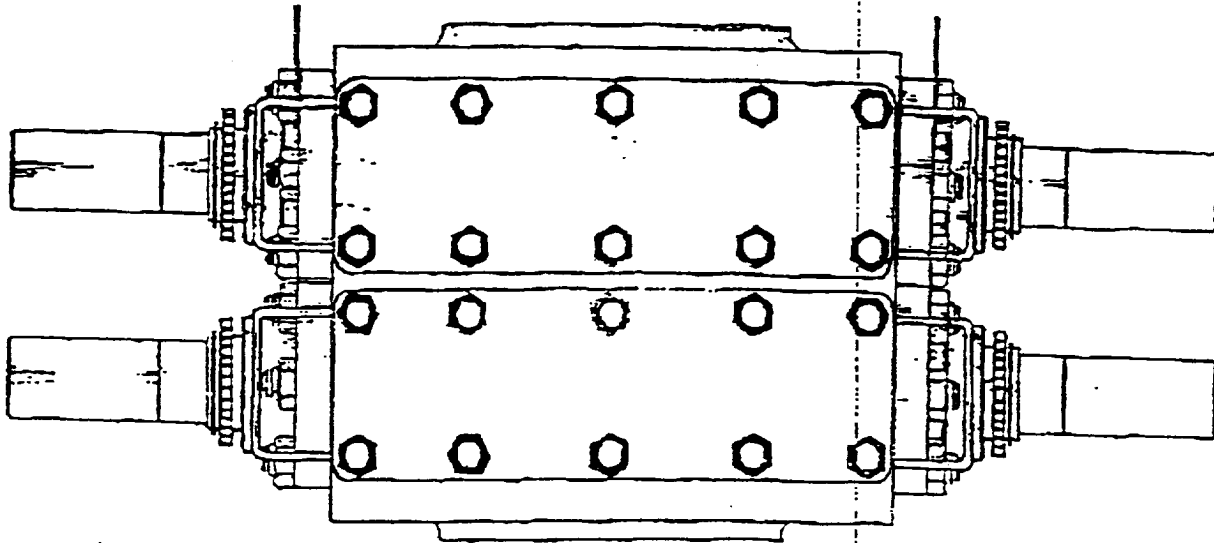
U.S.G.S. TOPOGRAPHIC MAP

RED LAKE SE. N.M.

JOHN WEST SURVEYING
HOBBS, NEW MEXICO
4(505 393-3117

RECEIVED
ARTESIA

MANUAL BOP
7-1/16" x 3,000#



DIMENSIONS AND WEIGHTS

MECHANICAL		
Weight	Single (pounds)	2,225#
	Double (pounds)	2,200#
Overall height, less studs	Single (inches)	13"
	Double (inches)	22"
Overall length (inches)		61"
Overall width, less handwheel (inches)		22"
Opening through preventer (inches)		7-1/16"
Working pressure (psi)		3,000#
Test pressure (psi)		6,000#

RECEIVED
OCD ARTESIA