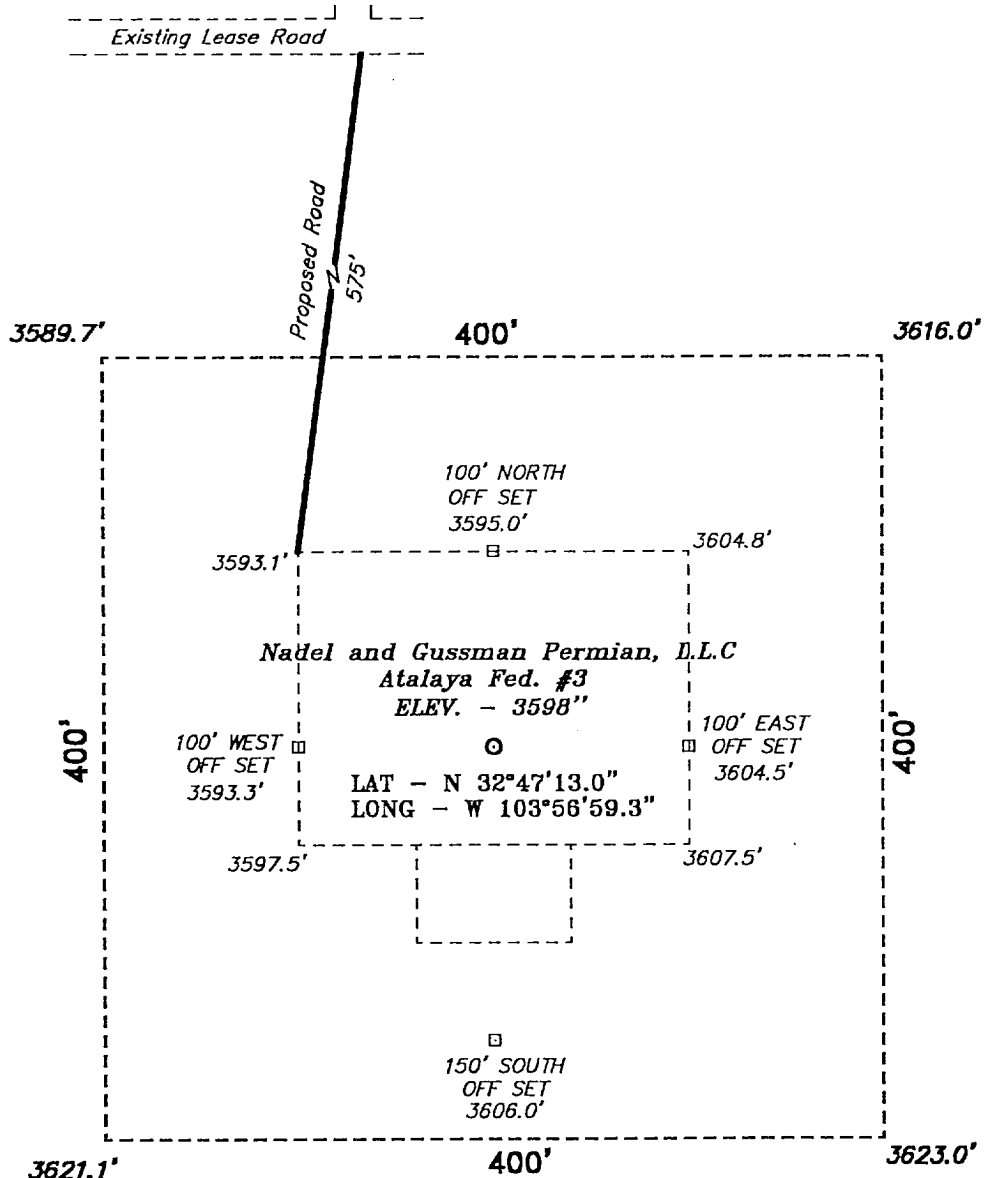
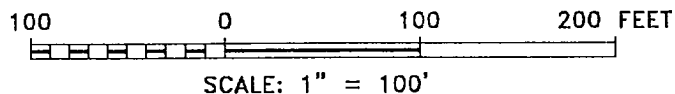


**SECTION 35, TOWNSHIP 17 SOUTH, RANGE 30 EAST, N.M.P.M.,
EDDY COUNTY, NEW MEXICO.**



DIRECTIONS TO WELL LOCATION

FROM THE JUNCTION OF US HWY 82 AND CO. RD. 220, GO SOUTH AND THEN WEST ON CO. RD. 220 TO A LEASE ROAD; THENCE SOUTH ON LEASE ROAD APPROX. 2 MILES TO A POINT WHICH LIES APPROX. 1700 FEET FROM THE PROPOSED WELL LOCATION.



NADEL AND GUSSMAN PERMIAN, L.L.C.

REF: Atalaya Federal No. 3 / Well Pad Topo

THE ATALAYA FED. No. 3 LOCATED 1175' FROM THE SOUTH LINE AND 430' FROM THE WEST LINE OF SECTION 35, TOWNSHIP 17 SOUTH, RANGE 30 EAST, N.M.P.M., EDDY COUNTY, NEW MEXICO.