

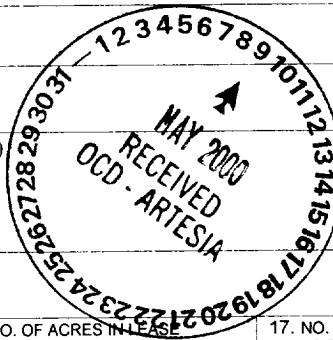
UNITED STATES  
DEPARTMENT OF THE INTERIOR  
BUREAU OF LAND MANAGEMENT

ARTESIA, NM  
SUBMIT IN TRIPLICATE\*  
(Other instructions on reverse side)

FORM APPROVED  
OMB NO. 1004-0136  
Expires: February 28, 1995

APPLICATION FOR PERMIT TO DRILL OR DEEPEN

1a. TYPE OF WORK <b>DRILL</b> <input checked="" type="checkbox"/> <b>DEEPEN</b> <input type="checkbox"/>		5. LEASE DESIGNATION AND SERIAL NO. LC-0384575
b. TYPE OF WELL OIL WELL <input checked="" type="checkbox"/> GAS WELL <input type="checkbox"/> OTHER <input type="checkbox"/> SINGLE ZONE <input type="checkbox"/> MULTIPLE ZONE <input type="checkbox"/>		6. IF INDIAN, ALLOTTEE OR TRIBE NAME
2. NAME OF OPERATOR PREMIER OIL & GAS, INC. 17985		7. UNIT AGREEMENT NAME
3. ADDRESS AND TELEPHONE NO. P.O. BOX 1246, ARTESIA, NM 88210 505-748-2093		8. FARM OR LEASE NAME, WELL NO. DALE H PARKE B TR B #12 9376
4. LOCATION OF WELL (Report location clearly and in accordance with any State requirements.) At surface 1650 FSL 1650 FWL At proposed prod. zone SAME Unit K		9. API WELL NO. 30-015-31138
14. DISTANCE IN MILES AND DIRECTION FROM NEAREST TOWN OR POST OFFICE* SEE SURFACE USE PLAN		10. FIELD AND POOL, OR WILDCAT LOCO HILLS PADDOCK
15. DISTANCE FROM PROPOSED* LOCATION TO NEAREST PROPERTY OR LEASE LINE, FT (Also to nearest drilg. unit line, if any) 1650'	16. NO. OF ACRES IN LEASE 80	11. SEC., T., R., M., OR BLK. AND SURVEY OR AREA SEC. 15-T17S-R30E
18. DISTANCE FROM PROPOSED LOCATION* TO NEAREST WELL, DRILLING, COMPLETED, OR APPLIED FOR, ON THIS LEASE, FT.	19. PROPOSED DEPTH 6000'	12. COUNTY OR PARISH EDDY
21. ELEVATIONS (Show whether DF, RT, GR, etc.) 3688' GR	17. NO. OF ACRES ASSIGNED TO THIS WELL 40	13. STATE NM
20. ROTARY OR CABLE TOOLS ROTARY		22. APPROX. DATE WORK WILL START* 04/30/00



23. PROPOSED CASING AND CEMENTING PROGRAM				
SIZE OF HOLE	GRADE, SIZE OF CASING	WEIGHT PER FOOT	SETTING DEPTH	QUANTITY OF CEMENT
12 1/4"	J-55, 8 5/8"	24#	425'	300 SX, CIRC
7 7/8"	J-55, 5 1/2"	17#	6000'	SUFFICIENT TO COVER 200' ABOVE ALL KNOWN O&G HORIZONS

WITNESSES

PAY ZONE WILL BE SELECTIVELY STIMULATED AND PERFORATED AS NEEDED FOR OPTIMUM PRODUCTION.

ATTACHED ARE: 1. WELL LOCATION AND ACREAGE DEDICATION PLAT  
2. SURFACE USE PLAN  
3. SUPPLEMENTAL DRILLING DATA

APPROVAL SUBJECT TO  
GENERAL REQUIREMENTS AND  
SPECIAL STIPULATIONS

IN ABOVE SPACE DESCRIBE PROGRAM: If proposal is to deepen, give data on present productive zone and proposed new productive zone. If proposal is to drill or deepen directionally, give pertinent data on subsurface locations and measured and true vertical depths. Give blowout preventer program, if any.

24. SIGNED Roalie Jones TITLE PRESIDENT DATE 03/30/00  
(This space for Federal or State office use)

PERMIT NO. \_\_\_\_\_ APPROVAL DATE \_\_\_\_\_

Application approval does not warrant or certify that the applicant holds legal or equitable title to those rights in the subject lease which would entitle the applicant to conduct operations thereon.  
CONDITIONS OF APPROVAL, IF ANY:

Acting

Assistant Field Manager,  
Lands And Minerals

APPROVED BY JOHN P. SIMPSON TITLE \_\_\_\_\_ DATE \_\_\_\_\_

\*See Instructions On Reverse Side

Title 18 U.S.C. Section 1001, makes it a crime for any person knowingly and willfully to make to any department or agency of the United States any false, fictitious or fraudulent statements or representations as to any matter within its jurisdiction.



RECEIVED  
MAR 31 1960

2000 MAR 31 A 10:34

RECEIVED



DISTRICT I  
P.O. Box 1980, Hobbs, NM 88241-1980

State of New Mexico  
Energy, Minerals and Natural Resources Department

Form C-102  
Revised February 10, 1994  
Submit to Appropriate District Office  
State Lease - 4 Copies  
Fee Lease - 3 Copies

DISTRICT II  
P.O. Drawer DD, Artesia, NM 88211-0719

DISTRICT III  
1000 Rio Brazos Rd., Aztec, NM 87410

DISTRICT IV  
P.O. BOX 2088, SANTA FE, N.M. 87504-2088

OIL CONSERVATION DIVISION  
P.O. Box 2088  
Santa Fe, New Mexico 87504-2088

☐ AMENDED REPORT

WELL LOCATION AND ACREAGE DEDICATION PLAT

API Number	Pool Code 96718	Pool Name LOCO HILLS Paddock
Property Code	Property Name DALE H. PARKE B TR. B	Well Number 12
OGRID No. 17985	Operator Name PREMIER OIL & GAS, INC.	Elevation 3688

Surface Location

UL or lot No. K	Section 15	Township 17 S	Range 30 E	Lot Idn	Feet from the 1650	North/South line SOUTH	Feet from the 1650	East/West line WEST	County EDDY
--------------------	---------------	------------------	---------------	---------	-----------------------	---------------------------	-----------------------	------------------------	----------------

Bottom Hole Location If Different From Surface

UL or lot No.	Section	Township	Range	Lot Idn	Feet from the	North/South line	Feet from the	East/West line	County
Dedicated Acres 40	Joint or Infill	Consolidation Code	Order No.						

NO ALLOWABLE WILL BE ASSIGNED TO THIS COMPLETION UNTIL ALL INTERESTS HAVE BEEN CONSOLIDATED  
OR A NON-STANDARD UNIT HAS BEEN APPROVED BY THE DIVISION

		<p><b>OPERATOR CERTIFICATION</b></p> <p>I hereby certify that the information contained herein is true and complete to the best of my knowledge and belief.</p> <p><i>Rosalie Jones</i> Signature ROSALIE JONES Printed Name PRESIDENT Title 3/29/00 Date</p> <p><b>SURVEYOR CERTIFICATION</b></p> <p>I hereby certify that the well location shown on this plat was plotted from field notes of actual surveys made by me or under my supervision, and that the same is true and correct to the best of my belief.</p> <p>FEBRUARY 21, 2000 Date Surveyed DC Signature &amp; Seal of Professional Surveyor <i>Ronald J. Eidson</i> 00-11-0109 Certificate No. RONALD J. EIDSON 3239 GARY EIDSON 12641 MACON McDONALD 12165</p>
--	--	---



## **DRILLING PROGRAM**

**Attached to Form 3160-3  
Premier Oil and Gas, Inc.  
Dale H. Parke "B" Tract B No. 12  
1650' FSL and 1650' FWL  
Section 15-17S-30E  
Eddy County, New Mexico**

### **1. Geologic Name of Surface Formation:**

Permian

### **2. Estimated Tops of Important Geologic Markers:**

Permian	Surface	Seven Rivers	1145'
Salt	475'	Queen	1815'
Base of Salt	780'	Grayburg	2140'
Yates	930'	San Andres	2510'
		Glorietta	3900'

### **3. Estimated Depths of Anticipated Fresh Water, Oil or Gas:**

Upper Permian Sands	100'	Fresh Water
Yates	930'	Oil
Seven Rivers	1145'	Oil
Queen	1815'	Oil
Grayburg	2140'	Oil
San Andres	2510'	Oil
Glorietta	3900'	Oil

No other formations are expected to give up oil, gas, or fresh water in measurable quantities. The surface fresh water sands will be protected by setting 8 5/8 casing at 425' and circulating cement back to surface. Any shallower zones above TD which contain commercial quantities of oil and/or gas will have cement circulated across them by inserting a float shoe joint into the 5 1/2" production casing which will be run at TD.

### **4. Casing Program:**

<u>Hole Size</u>	<u>Interval</u>	<u>OD csg</u>	<u>Weight, Grade, Jt. Cond. Type</u>			
12 1/4"	0 - 425'	8 5/8"	24#	J-55	LTC NEW	R-3
7 7/8"	0 - TD	5 1/2"	17#	J-55	LTC NEW	R-3



## DRILLING PROGRAM

### PAGE 2

#### Cement Program:

- 8 5/8" Surface Casing: Cemented to surface with 300sx of Class C w/2% cc.
- 5 1/2" Production Casing: Cemented to sufficiently cover 200' above all oil and gas horizons.

#### 5. Minimum Specifications for Pressure Control:

The blowout preventer equipment (BOP) shown in Exhibit #1 will consist of a double ram-type (3000 psi wp) preventer. This unit will be hydraulically operated and the ram-type preventer will be equipped with blind rams on top and 4-1/2" drill pipe rams on bottom. This BOP will be nipped up on the 8 5/8" surface csg and used continuously until TD is reached. All BOP's and accessory equipment will be tested to 3000 psi before drilling out of surface casing.

Pipe rams will be operationally checked each 24 hour period. Blind rams will be operationally checked on each trip out of the hole. These checks will be noted on the daily tour sheets. A 2" kill line and a 3" choke line will be included in the drilling spool located below the ram-type BOP. Other accessories to the BOP equipment will include a kelly cock and floor safety valve (inside BOP) and choke lines and choke manifold with 3000 psi WP rating.

#### 6. Types and Characteristics of the Proposed Mud System:

The well will be drilled to TD with cut brine. The applicable depths and properties of this system are as follows:

<u>Depth</u>	<u>Type</u>	<u>Weight (ppg)</u>	<u>Viscosity (sec)</u>	<u>Waterloss (cc)</u>
0 - 425'	Fresh Water (Spud)	8.5	28	N.C.
350'-6000'	Brine	9.8 - 10.2	40 - 45	N.C.

#### 7. Auxiliary Well Control and Monitoring Equipment:

- (A) A kelly cock will be kept in the drill string at all times.
- (B) A full opening drill pipe stabbing valve (inside BOP) with proper drill pipe connections will be on the rig floor at all times.



**DRILLING PROGRAM**  
**PAGE 3**

**8. Logging, Testing, and Coring Program:**

- (A) No Drillstem tests are anticipated.
- (B) The electric logging program will consist of Dual Laterolog Micro SFL, Spectral Density Dual Spaced Neutron Csng Log, and Depth Control Log.
- (C) No conventional coring is anticipated.
- (D) Further testing procedures will be determined after the 5 1/2" production casing has been cemented at TD based on drill shows, and log evaluation, and drill stem test results.

**9. Abnormal Conditions, Pressures, Temperatures, & Potential Hazards:**

No abnormal pressures or temperatures are anticipated. The estimated bottom hole temperature (BHT) at TD is 105° and estimated bottom hole pressure (BHP) is 2218 psig.

**10. Anticipated Starting Date and Duration of Operations:**

Location and road work will not begin until approval has been received from the BLM. The anticipated spud date is April 30, 2000. Once commenced, the drilling operation should be finished in approximately 21 days. If the well is productive, an additional 30 to 60 days will be required for completion and testing before a decision is made to install permanent facilities.



## **SURFACE USE AND OPERATING PLAN**

**Attached to Form 3160-3  
Premier Oil and Gas, Inc.  
Dale H. Parke "B" Tract B No. 12  
1650' FSL and 1650' FWL  
Section 15-17S-30E  
Eddy County, New Mexico**

### **1. Existing Roads:**

- A. The well site and elevation plat for the proposed well is attached. It was staked by John West Engineering.
- B. All roads to the location are shown in Exhibit #3. The existing roads are illustrated in red and are adequate for travel during drilling and production operations. Upgrading of the road prior to drilling will be done where necessary as determined during the onsite inspection.
- C. Directions to location: From Loco Hills, turn north on Goatropers road (CR219) and proceed .4 miles. Turn east on lease road and proceed 1 mile. Turn northeast and proceed .4 miles. Turn west and proceed .2 miles. Access road and location on southwest side of lease road.
- D. Routine grading and maintenance of existing roads will be conducted as necessary to maintain their condition as long as any operations continue on this lease.

### **2. Proposed Access Road:**

A new access road of 347' will be necessary. The new road will be constructed as follows:

- A. The maximum width of the running surface will be 10'. The road will be crowned and ditched and constructed of 6" of rolled and compacted caliche. Ditches will be at 3:1 slope and 4 feet wide. Water will be diverted where necessary to avoid ponding, prevent erosion, maintain good drainage, and to be consistent with local drainage patterns. BLM may specify any additions or changes during the onsite inspection.
- B. The average grade will be less than 1%.
- C. No turnouts are planned.



## **SURFACE USE AND OPERATING PLAN**

### **PAGE 2**

- D. No culverts, cattleguard, gates, low-water crossings, or fence cuts are necessary. No new road will be built for this well. Existing roads will be used to access the proposed well.
- E. Surfacing material will consist of native caliche. Caliche will be obtained from the nearest BLM-approved caliche pit. Any additional materials that are required will be purchased from the dirt contractor.
- F. The proposed access road as shown in Exhibit #3 has been centerline flagged by John West Engineering.

### **3. Location of Existing Wells:**

Exhibit #2 shows all existing wells within a one-half mile radius of this well.

### **4. Location of Existing and/or Proposed Facilities:**

- A. Premier Oil and Gas, Inc. has an established collection facility for this lease located in Unit M of Section 15-17S-30E, Eddy County.
- B. If the well is productive, a 3" plastic flowline (grade SDR 7 @ 265 psi) will be laid on the surface following the existing lease road or pipeline Right-of-Way to the tank battery as shown in blue on Exhibit #3. Anticipated pressures in the flowline should not exceed 75 psi.
- C. If the well is productive, power will be obtained from Central Valley Electric. Central Valley Electric will apply for ROW for their power lines.
- D. If the well is productive, rehabilitation plans are as follows:
  - (1) The reserve pit will be back-filled after the contents of the pit are dry (within 10 months after the well is completed).
  - (2) Topsoil removed from the drill site will be used to recontour the pit area and any unused portions of the drill pad to the original natural level, as nearly as possible, and reseeded as per BLM specifications.

### **5. Location and Type of Water Supply:**

The well will be drilled with a combination brine and fresh water mud system



## **SURFACE USE AND OPERATING PLAN**

### **PAGE 3**

as outlined in the drilling program. The water will be obtained from commercial water stations in the area and hauled to the location by transport truck over the existing and proposed access roads shown in Exhibit #3. If a commercial fresh water source is nearby, pipeline may be laid along existing road ROW's and fresh water pumped to the well. No water well will be drilled on the location.

#### **6. Source of Construction Materials:**

All caliche required for construction of the drill pad and the proposed new access road (approximately 1500 cubic yards) will be obtained from a BLM - approved caliche pit. All roads and pads will be constructed of 6" of rolled and compacted caliche.

#### **7. Methods of Handling Water Disposal:**

- A. Drill cuttings not retained for evaluation purposes will be disposed into the reserve pit.
- B. Drilling fluids will be contained in lined working pits. The reserve pit will contain any excess drilling fluid or flow from the well during drilling, cementing, and completion operations. The reserve pit will be an earthen pit, approximately 100' X 150' X 6' deep. A dike will be built across the pit, dividing it in half. One-half of the reserve pit will be plastic-lined to minimize loss of drilling fluids and saturation of the ground with brine water. The other half of the reserve pit will be lined with plastic and used only if we encounter a waterflow during drilling operations and find that we need additional space. This portion of the pit is a precautionary measure only. The portion of the pit that will be lined with plastic should be more than adequate for normal drilling operations. If a water flow is encountered, we should have ample time to line the other half of the pit with plastic before the water encroaches.
- C. Water produced from the well during completion may be disposed into the reserve pit.
- D. Garbage and trash produced during drilling or completion operations will be hauled off. All waste material will be contained to prevent scattering by the wind. All water and fluids will be disposed of into the reserve pit. Salts and other chemicals produced during drilling or testing will be disposed into the reserve pit. No toxic waste or hazardous chemicals will be



**SURFACE USE AND OPERATING PLAN**  
**PAGE 4**

produced by this operation.

- E. After the rig is moved out and the well is either completed or abandoned, all waste materials will be cleaned-up within 30 days. No adverse materials will be left on location. The reserve pit will be completely fenced until it has dried. When the reserve pit is dry enough to breakout and fill, the reserve pit will be leveled and reseeded as per BLM specifications. In the event of a dry hole, the location will be ripped and seeded, as per BLM Specifications, and a dry hole marker will remain.

**8. Ancillary Facilities:**

No airstrip, campsite, or other facilities will be built as a result of the operations on this well.

**9. Well Site Layout:**

- A. The drill pad layout, is shown in Exhibit #4. Dimensions of the pad and pits are shown. Top soil, if available, will be stockpiled per BLM specifications as determined at the on-site inspection.
- B. The reserve pit will be lined with a high-quality plastic sheeting.

**10. Plans for Restoration of the Surface:**

- A. Upon finishing drilling and/or completion operations, all equipment and other material not needed for operations will be removed.

All trash, garbage, and pit lining will be hauled away in order to leave the location in an aesthetically pleasing condition. All pits will be filled and the location leveled within 10 months after abandonment.

- B. Three sides of the reserve pit will be fenced prior to and during drilling operations. At the time that the rig is removed, the reserve pit will be fenced on the rig (fourth) side. The fencing will remain in place until the pit area is cleaned-up and leveled. No oil will be left on the surface of the fluid in the pit.
- C. Upon completion of the proposed operations, if the well is



**SURFACE USE AND OPERATING PLAN**  
**PAGE 5**

completed, the reserve pit area will be treated as outlined above within the same prescribed time. Any additional caliche required for facilities will be obtained from a BLM - approved caliche pit. Topsoil removed from the drill site will be used to recontour the pit area to the original natural level and reseeded as per BLM specifications.

**11. Surface Ownership:**

The wellsite and lease is located on Federal Surface.

- A. The area around the well site is grassland and the top soil is sandy. The vegetation is native scrub grasses with abundant oakbrush, sagebrush, yucca, and prickly pear.
- B. A Cultural Resources Examination has been requested and will be forwarded to your office in the near future.

**12. Lessee's and Operator's Representative:**

The Premier Oil and Gas, Inc. representative responsible for assuring compliance with the surface use plan is as follows:

**Rosalie Jones**  
**Premier Oil and Gas, Inc.**  
**Post Office Box 1246**  
**Artesia, New Mexico 88211**  
**Phone: 505/748-2093 (office)**

**Certification:**

I hereby certify that I, or persons under my direct supervision, have inspected the proposed drillsite and access route; that I am familiar with the conditions which currently exist; that the statements made in this plan are to the best of my knowledge, true and correct; and the work associated with the operations proposed herein will be performed by Marbob Energy Corporation and its contractors and subcontractors in conformity with this plan and the provisions of 18 U.S.C. 1001 for the filing of a false statement.

Date: 03/30/00

Signed: Rosalie Jones  
Rosalie Jones  
President



## **MARBOB ENERGY CORPORATION**

### **HYDROGEN SULFIDE DRILLING OPERATIONS PLAN**

#### **I. HYDROGEN SULFIDE TRAINING**

All personnel, whether regularly assigned, contracted, or employed on an unscheduled basis, will receive training from a qualified instructor in the following areas prior to commencing drilling operations on this well:

1. The hazards and characteristics of hydrogen sulfide (H<sub>2</sub>S).
2. The proper use and maintenance of personal protective equipment and life support systems.
3. The proper use of H<sub>2</sub>S detectors, alarms, warning systems, briefing areas, evacuation procedures, and prevailing winds.
4. The proper techniques for first aid and rescue procedures.

In addition, supervisory personnel will be trained in the following areas:

1. The effects of H<sub>2</sub>S on metal components. If high tensile tubulars are to be used, personnel will be trained in their special maintenance requirements.
2. Corrective action and shut-in procedures when drilling or reworking a well and blowout prevention and well control procedures.
3. The contents and requirements of the H<sub>2</sub>S Drilling Operations Plan and the Public Protection Plan.

There will be an initial training session just prior to encountering a known or probable H<sub>2</sub>S zone (within 3 days or 500 feet) and weekly H<sub>2</sub>S and well control drills for all personnel in each crew. The initial training session shall include a review of the site specific H<sub>2</sub>S Drilling Operations Plan and the Public Protection Plan. This plan shall be available at the well site. All personnel will be required to carry documentation that they have received the proper training.

#### **II. H<sub>2</sub>S SAFETY EQUIPMENT AND SYSTEMS**

Note: All H<sub>2</sub>S safety equipment and systems will be installed, tested, and operational when drilling reaches a depth of 500 feet above, or three days prior to penetrating the first zone containing or reasonably expected to contain H<sub>2</sub>S.



1. Well Control Equipment:
  - A. Flare line.
  - B. Choke manifold.
  - C. Blind rams and pipe rams to accommodate all pipe sizes with properly sized closing unit.
  - D. Auxiliary equipment to include: annular preventer, mud-gas separator, rotating head.
2. Protective equipment for essential personnel:
  - A. Mark II Surviveair 30-minute units located in the dog house and at briefing areas.
3. H<sub>2</sub>S detection and monitoring equipment:
  - A. 2 - portable H<sub>2</sub>S monitor positioned on location for best coverage and response. These units have warning lights and audible sirens when H<sub>2</sub>S levels of 20 ppm are reached.
  - B. 1 - portable SO<sub>2</sub> monitor positioned near flare line.
4. Visual warning systems:
  - A. Wind direction indicators as shown on well site diagram.
  - B. Caution/Danger signs shall be posted on roads providing direct access to location. Signs will be painted a high visibility yellow with black lettering of sufficient size to be readable at a reasonable distance from the immediate location. Bilingual signs will be used, when appropriate. See example attached.
5. Mud Program:
  - A. The mud program has been designed to minimize the volume of H<sub>2</sub>S circulated to the surface. Proper mud



weight, safe drilling practices, and the use of H<sub>2</sub>S scavengers will minimize hazards when penetrating H<sub>2</sub>S bearing zones.

B. A mud-gas separator will be utilized.

6. Communication:

- A. Radio communications in company vehicles including cellular telephone and 2-way radio.
- B. Land line (telephone) communications at field office.

## **W A R N I N G**

**YOU ARE ENTERING AN H<sub>2</sub>S AREA  
AUTHORIZED PERSONNEL ONLY**

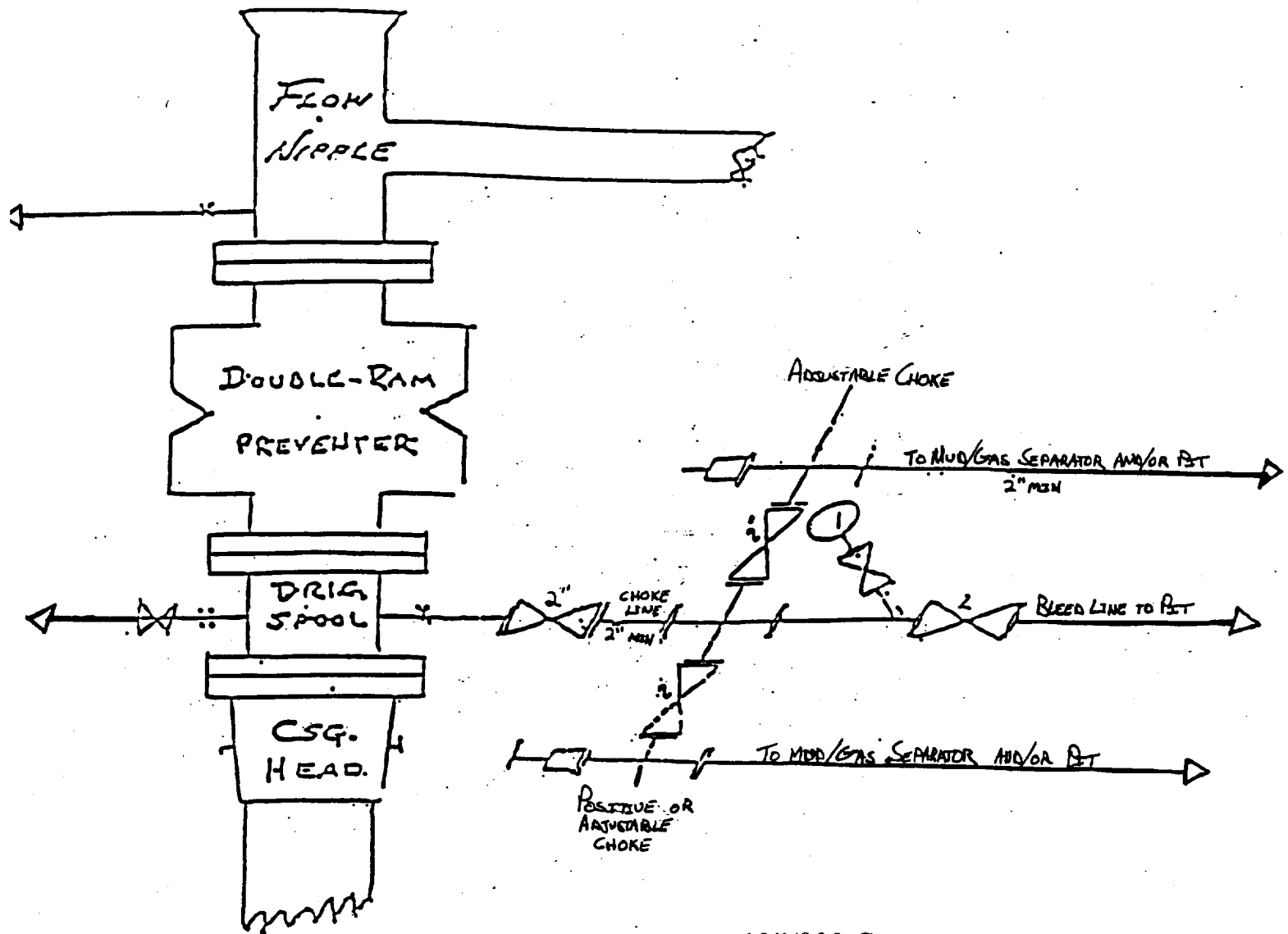
- 1. BEARDS OR CONTACT LENSES NOT ALLOWED**
- 2. HARD HATS REQUIRED**
- 3. SMOKING IN DESIGNATED AREAS ONLY**
- 4. BE WIND CONSCIOUS AT ALL TIMES**
- 5. CK WITH MARBOB FOREMAN AT MAIN OFFICE**

**MARBOB ENERGY CORPORATION**

**1-505-748-3303**



# BLOW OUT PREVENTER AND CHOKE MANIFOLD



10"/900 Cameron SS Space Saver  
3000# Working Pressure  
3000# Working Pressure Choke Manifold.

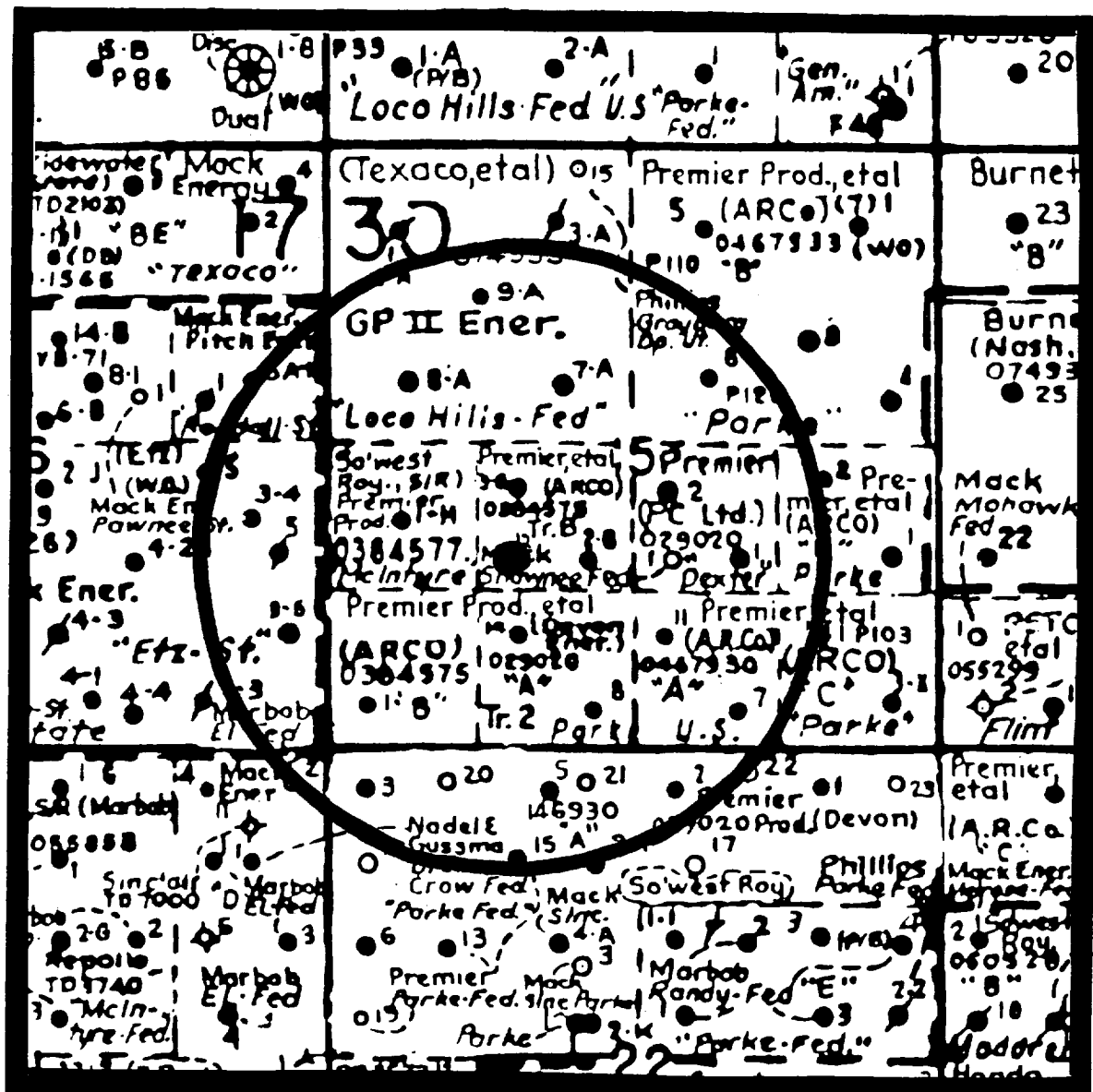
# PREMIER OIL & GAS INC.



Attachment to Exhibit #1  
NOTES REGARDING THE BLOWOUT PREVENTERS

1. Drilling nipple to be so constructed that it can be removed without use of a welder through rotary table opening, with minimum I.D. equal to preventer bore.
2. Wear ring to be properly installed in head.
3. Blow out preventer and all fittings must be in good condition, 1000 psi W.P. minimum.
4. All fittings to be flanged.
5. Safety valve must be available on rig floor at all times with proper connections, valve to be full bore 1000 psi W.P. minimum.
6. All choke and fill lines to be securely anchored, especially ends of choke lines.
7. Equipment through which bit must pass shall be at least as large as the diameter of the casing being drilled through.
8. Kelly cock on kelly.
9. Extension wrenches and hand wheels to be properly installed.
10. Blow out preventer control to be located as close to driller's position as feasible.
11. Blow out preventer closing equipment to include minimum 40 gallon accumulator, two independent sources of pump power on each closing unit installation, and meet all API specifications.





# PREMIER OIL & GAS INC.

DALE H. PARKE "B"  
TRACT B No. 12  
1650' FSL & 1650' FWL  
Section 15; T17S - R30E  
Eddy County, New Mexico



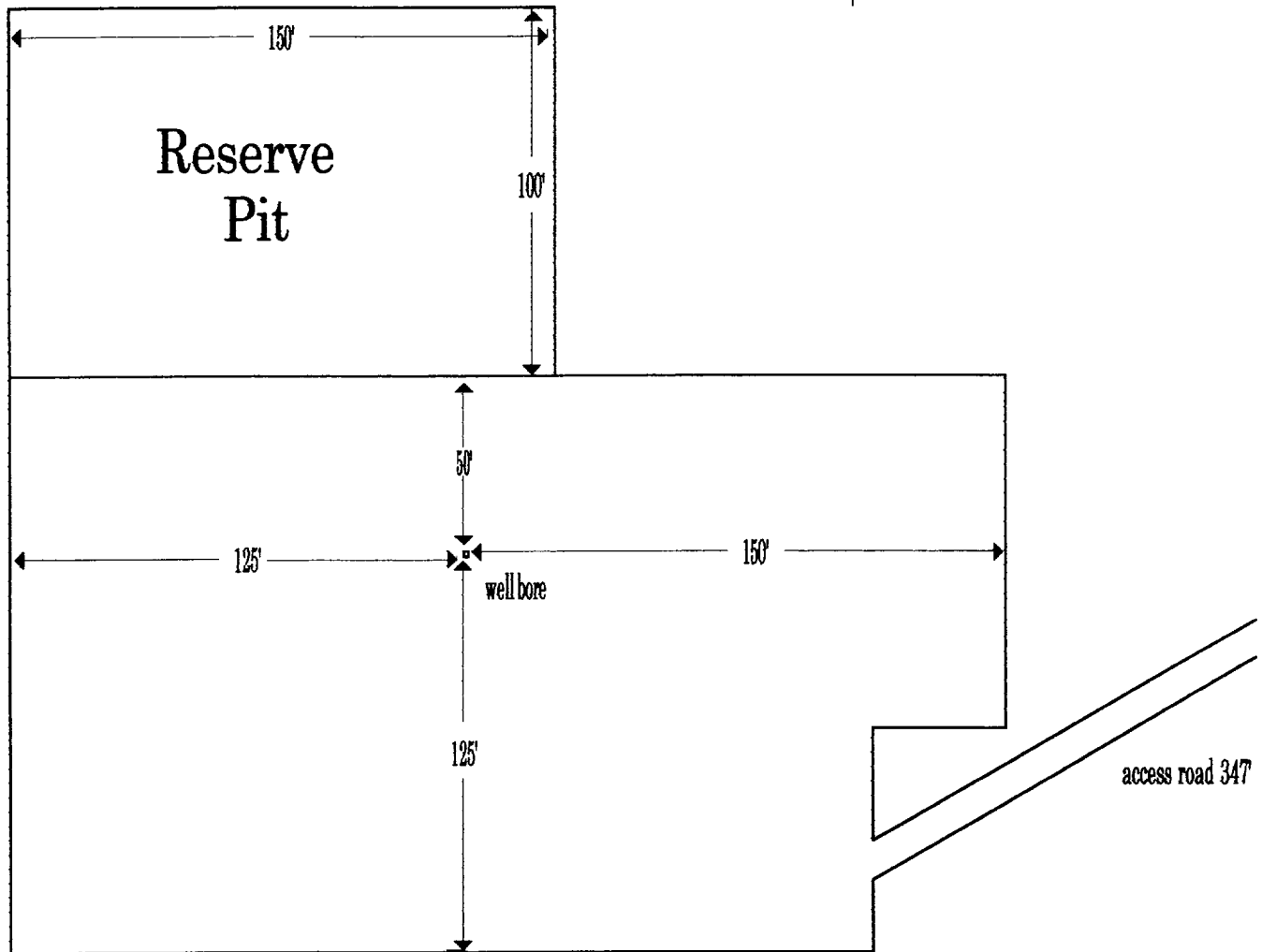


## EXHIBIT 3

DALE H. PARKE "B"  
TRACT B No. 12  
1650' FSL & 1650' FWL  
Section 15; T17S - R30E  
Eddy County, New Mexico



North



DALE H. PARKE "B"  
TRACT B No. 12  
1650' FSL & 1650' FWL  
Section 15; T17S - R30E  
Eddy County, New Mexico

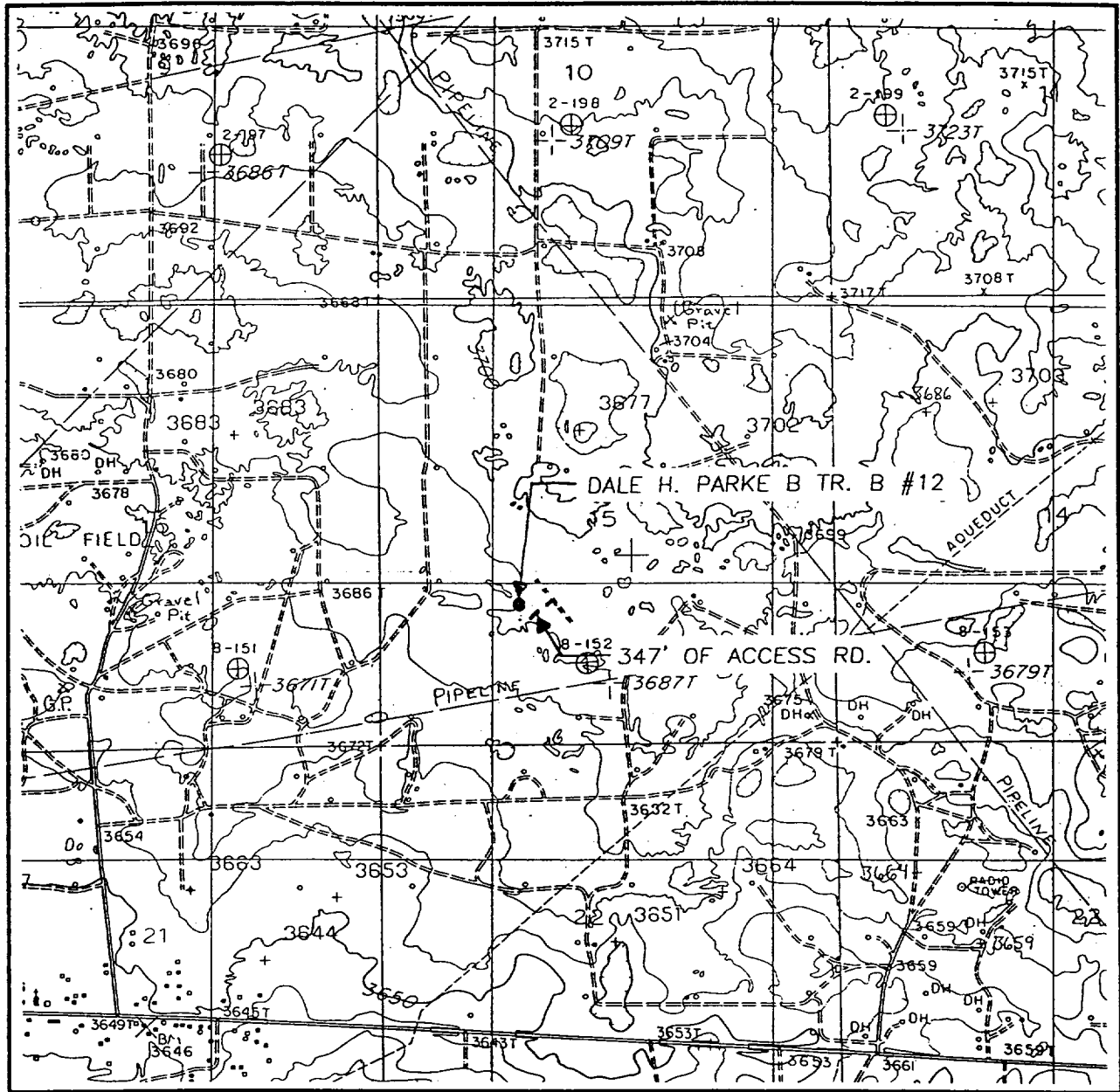
Exhibit Four



**JOHN WEST SURVEYING  
HOBBS, NEW MEXICO  
(505 393-3117**



# LOCATION VERIFICATION MAP



SCALE: 1" = 2000'

CONTOUR INTERVAL:  
LOCO HILLS - 10'

SEC. 15 TWP. 17-S RGE. 30-E

SURVEY N.M.P.M.

COUNTY EDDY

DESCRIPTION 1650' FSL & 1650' FWL

ELEVATION 3688

OPERATOR PREMIER OIL & GAS, INC.

LEASE DALE H. PARKE B TR. B

U.S.G.S. TOPOGRAPHIC MAP

LOCO HILLS, N.M.

**JOHN WEST SURVEYING  
HOBBS, NEW MEXICO  
(505 393-3117)**