

District I
PO Box 1980, Hobbs, NM 88241-1980
District II
811 South First, Artesia, NM 88210
District III
1000 Rio Brazos Rd., Aztec, NM 87410
District IV
2040 South Pacheco, Santa Fe, NM 87505

State of New Mexico
Energy, Minerals & Natural Resources Department

OIL CONSERVATION DIVISION
2040 South Pacheco
Santa Fe, NM 87505

Form C-101
Revised October 18, 1994
Instructions on back
Submit to Appropriate District Office
State Lease - 6 Copies
Fee Lease - 5 Copies

AMENDED REPORT

APPLICATION FOR PERMIT TO DRILL, RE-ENTER, DEEPEN, PLUG BACK OR ADD A ZONE

¹ Operator Name and Address. Louis Dreyfus Natural Gas Corporation 14000 Quail Springs Parkway, Suite 600 Oklahoma City, OK 73134	² OGRID Number 025773
⁴ Property Code 26070	⁵ Property Name Geronimo "36" State Com
³ API Number 30 - 0 15-31185	
⁶ Well No. 1	

⁷ Surface Location

UL or lot no.	Section	Township	Range	Lot Idn	Feet from the	North/South line	Feet from the	East/West line	County
C	36	17S	28E		1060	North	1980	West	Eddy

⁸ Proposed Bottom Hole Location If Different From Surface

UL or lot no.	Section	Township	Range	Lot Idn	Feet from the	North/South line	Feet from the	East/West line	County
⁹ Proposed Pool 1 Empire South (Morrow)					¹⁰ Proposed Pool 2				

¹¹ Work Type Code N	¹² Well Type Code G	¹³ Cable/Rotary R	¹⁴ Lease Type Code P	¹⁵ Ground Level Elevation 3680
¹⁶ Multiple N	¹⁷ Proposed Depth 11,050'	¹⁸ Formation Morrow	¹⁹ Contractor Patterson	²⁰ Spud Date 8/1/00

Minimum W.O.C time 8 hrs ²¹ Proposed Casing and Cement Program

Hole Size	Casing Size	Casing weight/foot	Setting Depth	Sacks of Cement	Estimated TOC
17 1/2"	13 3/8"	54.5#	425'	450 sks	Surface
12 1/4"	9 5/8"	36#	2,700'	900 sks	Surface
8 3/4"	5 1/2"	17#	11,050'	1300 sks	Tie back to 9 5/8"

²² Describe the proposed program. If this application is to DEEPEN or PLUG BACK give the data on the present productive zone and proposed new productive zone. Describe the blowout prevention program, if any. Use additional sheets if necessary.

1. Drill 17 1/2" hole to \pm 425'. Run 13 3/8" csg. and cement to surface w/450 sks. cement.
2. Drill 12 1/4" hole to \pm 2,700'. Set 9 5/8" csg. and cement to surface w/900 sks cement.
3. Drill 8 3/4" hole to \pm 11,050'. Run 5 1/2" csg. and cement to 9 5/8" w/1300 sks cement.

See attached "Exhibit 6" for BOP assembly.

²³ I hereby certify that the information given above is true and complete to the best of my knowledge and belief. Signature: <i>Carla Christian</i> Printed name: Carla Christian Title: Regulatory Technician Date: 6/09/00	Phone: (405) 749-5263	OIL CONSERVATION DIVISION Approved by: ORIGINAL SIGNED BY TIM W. GUM DISTRICT II SUPERVISOR Title: BGA Approval Date: JUN 13 2000 Expiration Date: JUN 13 2001 Conditions of Approval: Attached <input type="checkbox"/>
---	-----------------------	--

DISTRICT I
1825 N. French Dr., Hobbs, NM 88240

DISTRICT II
811 South First, Artesia, NM 88210

DISTRICT III
1000 Rio Brazos Rd., Aztec, NM 87410

DISTRICT IV
2040 South Pacheco, Santa Fe, NM 87506

State of New Mexico
Energy, Minerals and Natural Resources Department

Form C-102
Revised March 17, 1999

Submit to Appropriate District Office
State Lease - 4 Copies
Fee Lease - 3 Copies

OIL CONSERVATION DIVISION

2040 South Pacheco
Santa Fe, New Mexico 87504-2088

☐ AMENDED REPORT

WELL LOCATION AND ACREAGE DEDICATION PLAT

API Number	Pool Code	Pool Name
		Empire South (Morrow)
Property Code	Property Name	Well Number
	GERONIMO "36" STATE COM	1
OGRID No.	Operator Name	Elevation
025773	LOUIS DREYFUS NATURAL GAS CORPORATION	3680'

Surface Location

UL or lot No.	Section	Township	Range	Lot Idn	Feet from the	North/South line	Feet from the	East/West line	County
C	36	17 S	28 E		1060	NORTH	1980	WEST	EDDY

Bottom Hole Location If Different From Surface

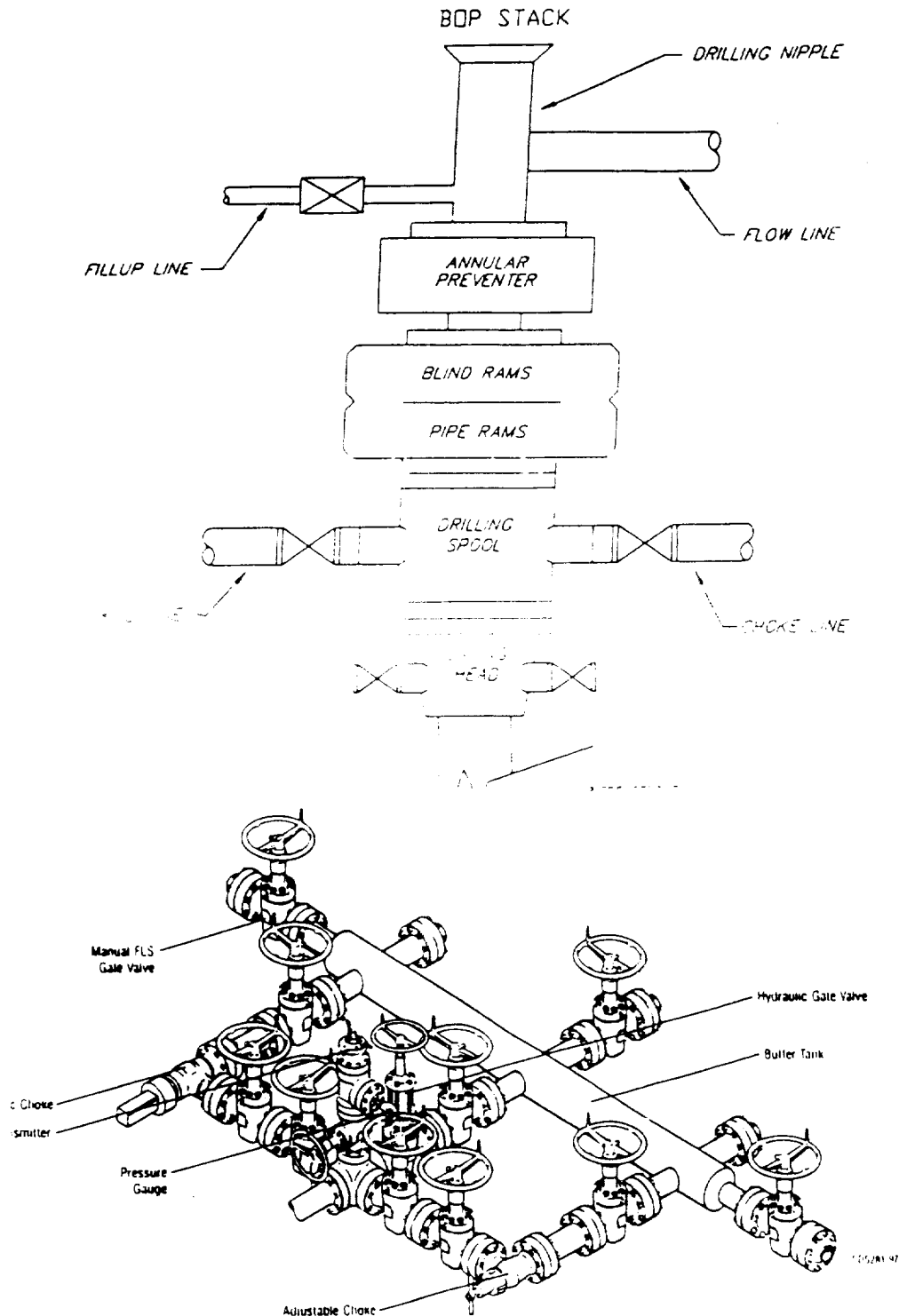
UL or lot No.	Section	Township	Range	Lot Idn	Feet from the	North/South line	Feet from the	East/West line	County
Dedicated Acres	Joint or Infill	Consolidation Code	Order No.						
320	N	C							

NO ALLOWABLE WILL BE ASSIGNED TO THIS COMPLETION UNTIL ALL INTERESTS HAVE BEEN CONSOLIDATED
OR A NON-STANDARD UNIT HAS BEEN APPROVED BY THE DIVISION

<p>State Lease 647</p>		<p>OPERATOR CERTIFICATION</p> <p>I hereby certify the the information contained herein is true and complete to the best of my knowledge and belief.</p> <p><i>Gene Simer</i> Signature</p> <p>Gene Simer Printed Name</p> <p>Dist. Ops. Mgr. Title</p> <p>05-31-00 Date</p>	
<p>State Lease B-949</p>		<p>State Lease B-11593</p>	
		<p>SURVEYOR CERTIFICATION</p> <p>I hereby certify that the well location shown on this plat was plotted from field notes of actual surveys made by me or under my supervision, and that the same is true and correct to the best of my belief.</p> <p>May 26, 2000 Date Surveyed</p> <p>GARY L. JONES Signature of Professional Surveyor</p> <p>7977 Professional Surveyor No.</p> <p>7977 Certificate No.</p> <p>BASIN SURVEYS</p>	

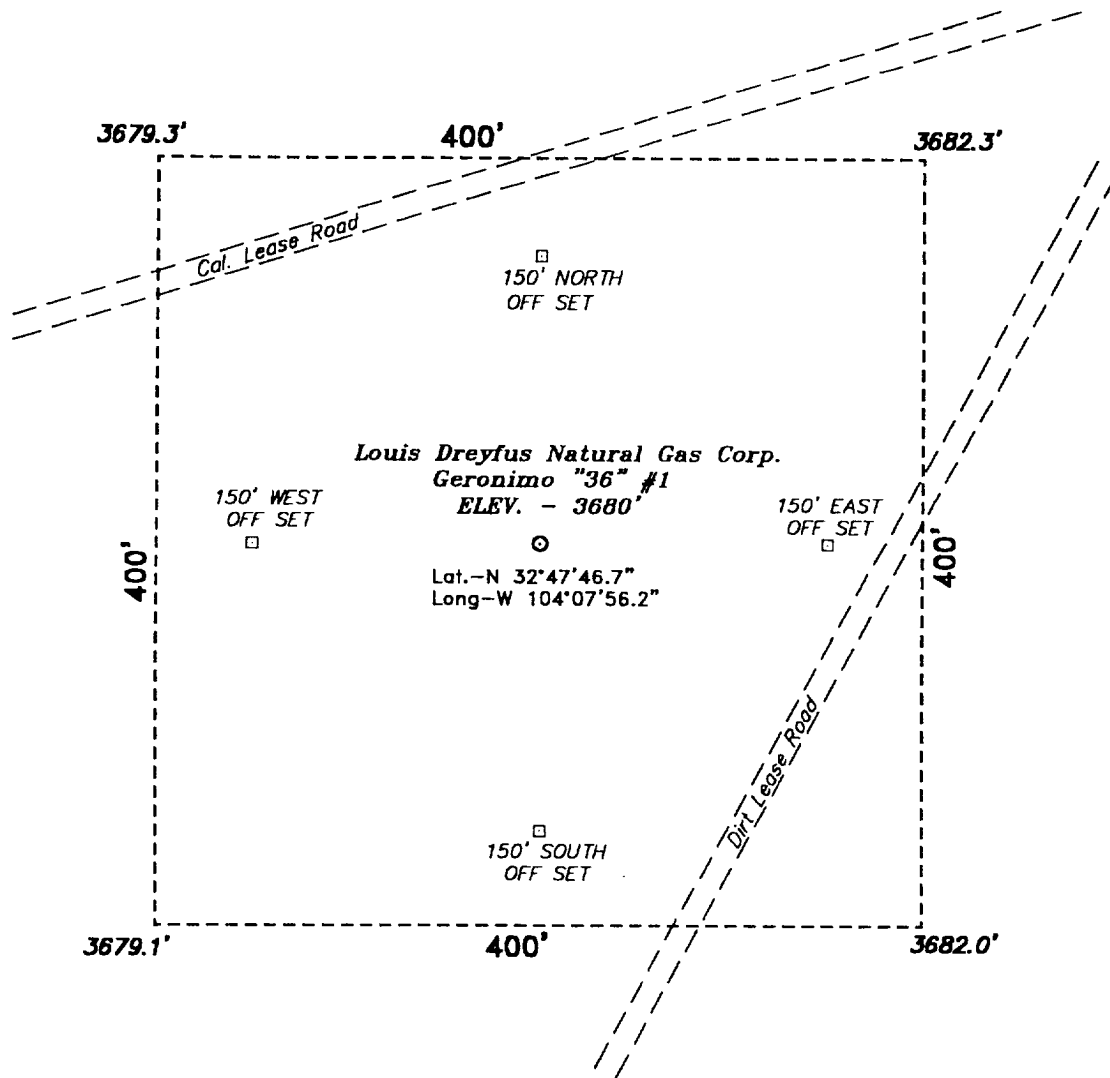
Exhibit 6

TYPICAL 5,000 p.s.i. BLOWOUT PREVENTER & CHOKE MANIFOLD SCHEMATIC



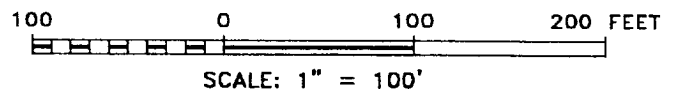
Typical Choke Manifold Designed for Land Drilling Applications

**SECTION 36, TOWNSHIP 17 SOUTH, RANGE 28 EAST, N.M.P.M.,
EDDY COUNTY, NEW MEXICO.**



Directions to Location:

FROM THE JUNCTION OF US HWY 82 AND STATE HWY 360, GO EAST ON HWY 82 APPROX. 0.25 MILE TO A POINT WHICH LIES APPROX. 2500 FEET NORTH OF THE PROPOSED WELL LOCATION.



Louis Dreyfus Natural Gas Corp.

REF: Geronimo "36" #1 / Well Pad Topo

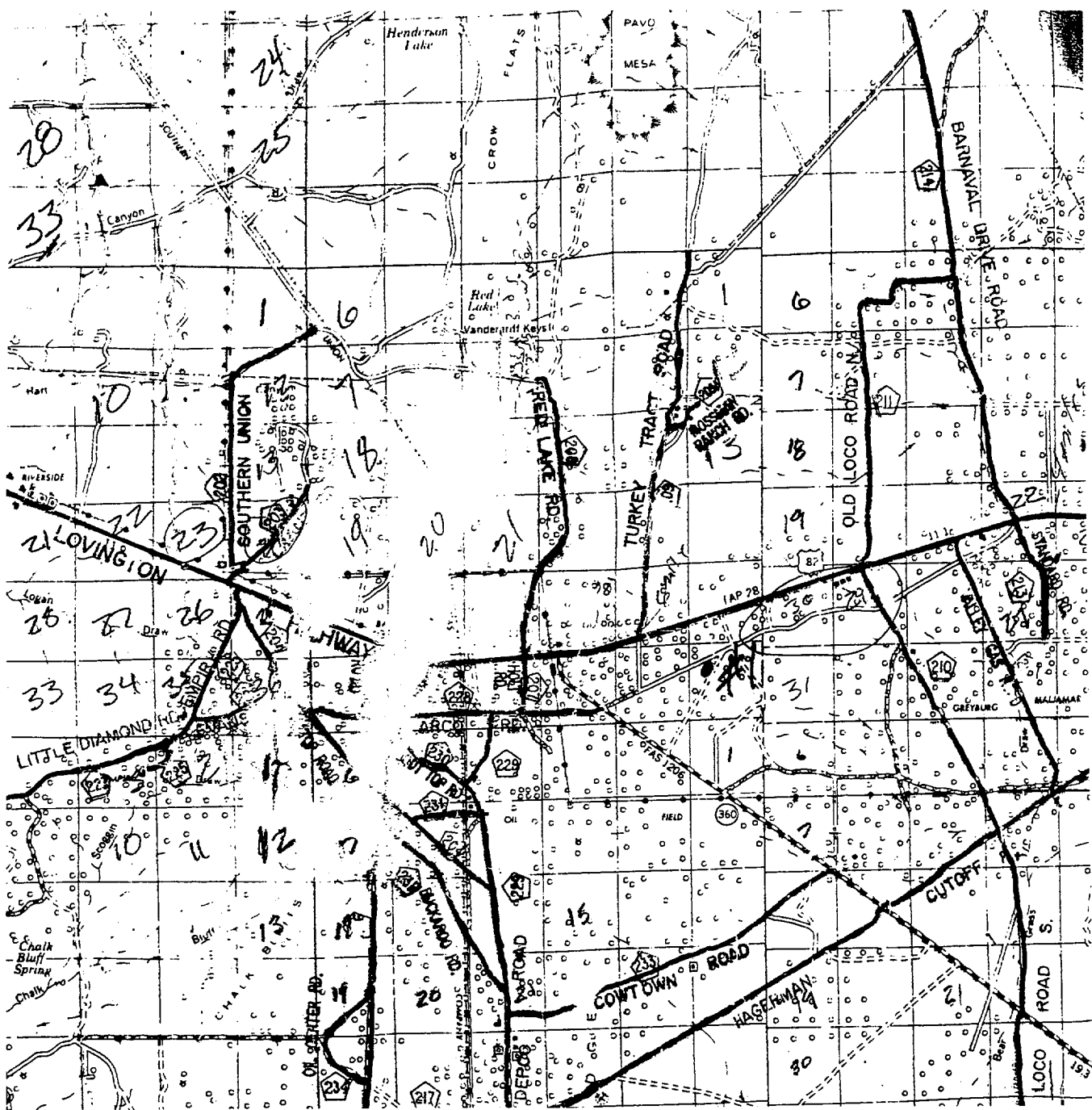
THE GERONIMO "36" No. 1 LOCATED 1060' FROM THE NORTH LINE AND 1980' FROM THE WEST LINE OF SECTION 36, TOWNSHIP 17 SOUTH, RANGE 28 EAST, N.M.P.M., EDDY COUNTY, NEW MEXICO.

BASIN SURVEYS P.O. BOX 1786-HOBBS, NEW MEXICO

W.O. Number: 0301 Drawn By: K. GOAD

Date: 05-30-2000 Disk: KJG #122 - 0279A.DWG

Survey Date: 05-26-2000 Sheet 1 of 1 Sheets



GERONIMO "36" #1

Located at 1060' FNL and 1980' FWL
 Section 36, Township 17 South, Range 28 East,
 N.M.P.M., Eddy County, New Mexico.

basin
surveys

focused on excellence
 in the oilfield

P.O. Box 1786
 1120 N. West County Rd.
 Hobbs, New Mexico 88241
 (505) 393-7316 - Office
 (505) 392-3074 - Fax
 basinsurveys.com

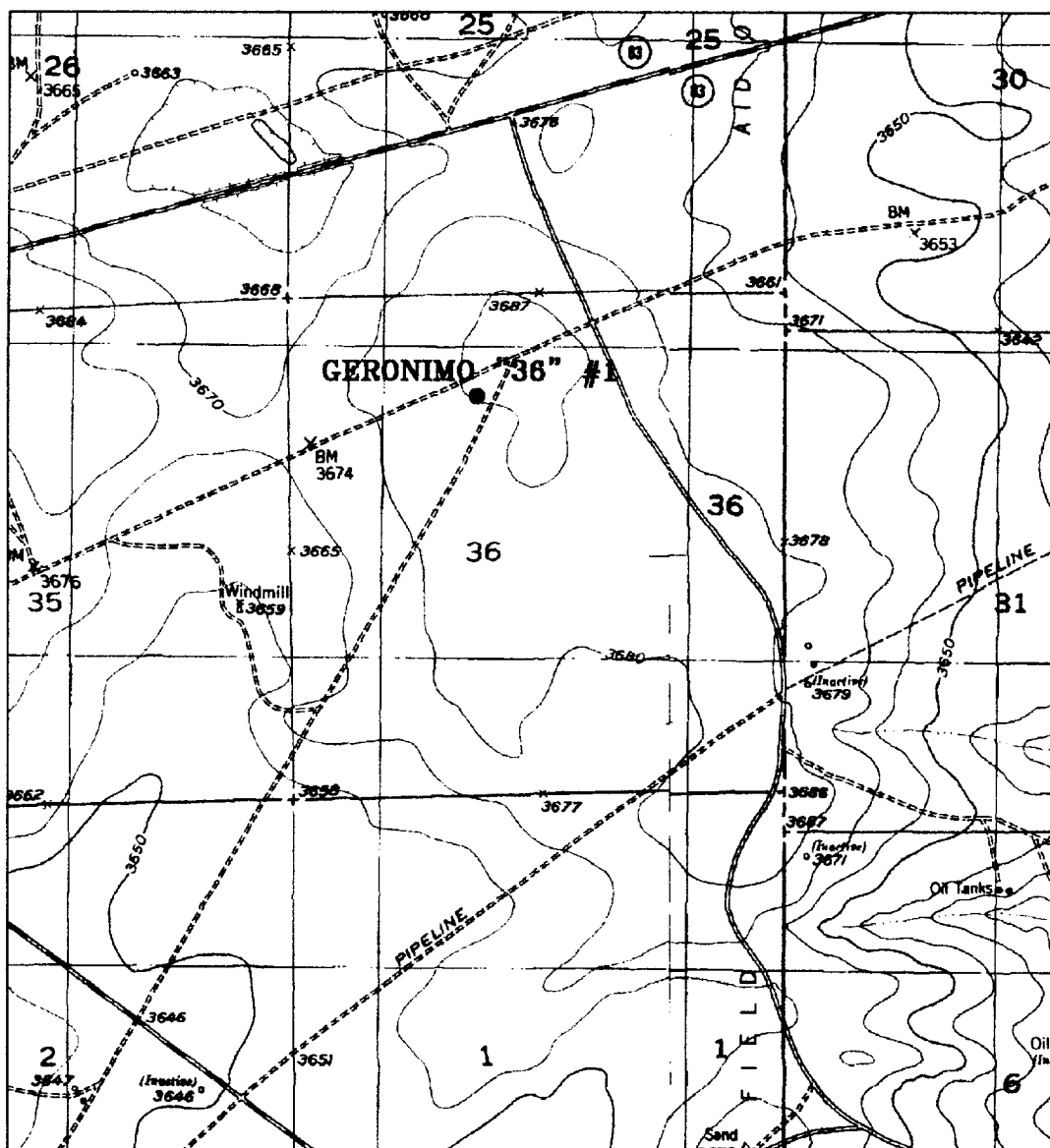
W.O. Number: 0301AA - KJG #122

Survey Date: 05-26-2000

Scale: 1" = 2 MILES

Date: 05-30-2000

LOUIS DREYFUS
 NATURAL GAS
 CORPORATION



GERONIMO "36" #1

Located at 1060' FNL and 1980' FWL
 Section 36, Township 17 South, Range 28 East,
 N.M.P.M., Eddy County, New Mexico.

basin
surveys

focused on excellence
 in the oilfield

P.O. Box 1786
 1120 N. West County Rd.
 Hobbs, New Mexico 88241
 (505) 393-7316 - Office
 (505) 392-3074 - Fax
 basinsurveys.com

W.O. Number: 0301AA - KJG #122

Survey Date: 05-26-2000

Scale: 1" = 2000'

Date: 05-30-2000

LOUIS DREYFUS
NATURAL GAS
CORPORATION