

UNITED STATES  
DEPARTMENT OF THE INTERIOR  
BUREAU OF LAND MANAGEMENT

APPLICATION FOR PERMIT TO DRILL OR DEEPEN

1a. TYPE OF WORK

DRILL ☒

DEEPEN ☐

b. TYPE OF WELL

OIL WELL ☒

GAS WELL ☐

OTHER

SINGLE ZONE ☒

MULTIPLE ZONE ☐

2. NAME OF OPERATOR

Phillips Petroleum Company

17643

3. ADDRESS AND TELEPHONE NO.

4001 Penbrook Street Odessa, TX 79762

(915) 368-1488

4. LOCATION OF WELL (Report location clearly and in accordance with any State requirements.)\*  
At surface

2310' FNL & 1650' FEL  
At proposed prod. zone

Unit G

14. DISTANCE IN MILES AND DIRECTION FROM NEAREST TOWN OR POST OFFICE\*

7 MI. W LOCO HILLS, NM

15. DISTANCE FROM PROPOSED\*

LOCATION TO NEAREST  
PROPERTY OR LEASE LINE, FT.  
(Also to nearest drlg. unit line, if any)

1650'

16. NO. OF ACRES IN LEASE

294.64

17. NO. OF ACRES ASSIGNED  
TO THIS WELL

40

18. DISTANCE FROM PROPOSED LOCATION\*  
TO NEAREST WELL, DRILLING, COMPLETED,  
OR APPLIED FOR, ON THIS LEASE, FT.

1320' from-19-#2&#5

19. PROPOSED DEPTH

5000'

20. ROTARY OR CABLE TOOLS

ROTARY

21. ELEVATIONS (Show whether DF,RT, GR, etc.)

3682' GL

22. APPROX. DATE WORK WILL START\*

UPON APPROVAL

23.

PROPOSED CASING AND CEMENTING DATA

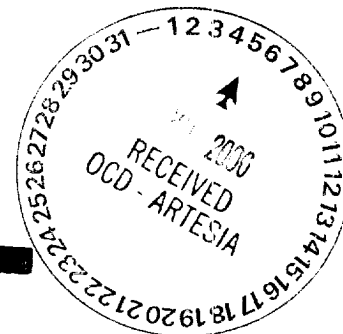
ROSWELL CONTROLLED WATER BASIN

SIZE OF HOLE	GRADE, SIZE OF CASING	WEIGHT PER FOOT	SETTING DEPTH	QUANTITY OF CEMENT
12-1/4"	8-5/8"	24#	450'	300 SX EST. TO WITNESS
7-7/8"	5-1/2"	17#	5000'	1200 SX EST. TOC TO SURF.

Attachments:

Location & Elevation Plats  
Drilling Program  
Hydrogen Sulfide Drilling Operations Plan  
BOP & Choke Manifold Schematic  
Rig Location Layout  
Proposed Line & Road Diagram  
Surface Use Plan

APPROVAL SUBJECT TO  
GENERAL REQUIREMENTS  
SPECIAL STIPULATIONS  
ATTACHED



IN ABOVE SPACE DESCRIBE PROPOSED PROGRAM: If proposal is to deepen, give data on present productive zone and proposed new productive zone. If proposal is to drill or deepen directionally, give pertinent data on subsurface locations and measured and true vertical depths. Give blowout preventer program, if any.

24.

SIGNED

Celestia A. Lopez for L.M. Sander

TITLE SUPV., REGULATION/PRORATION

DATE 06/12/00

(This space for Federal or State office use)

PERMIT NO.

APPROVAL DATE

Application approval does not warrant or certify that the applicant holds legal or equitable title to those rights in the subject lease which would entitle the applicant to conduct operations thereon.

CONDITIONS OF APPROVAL, IF ANY:

(ORIG. SGD.) ARMANDO A. LOPEZ

Acting

Assistant Field Manager,  
Lands And Minerals

JUN 29 2000

APPROVED BY

TITLE

DATE

\*See Instructions On Reverse Side

Title 18 U.S.C. Section 1001, makes it a crime for any person knowingly and willfully to make to any department or agency of the United States any false, fictitious or fraudulent statements or representations as to any matter within its jurisdiction.

APPROVED FOR 1 YEAR



DISTRICT I  
P.O. Box 1980, Hobbs, NM 88241-1980

DISTRICT II  
P.O. Drawer DD, Artesia, NM 88211-0719

DISTRICT III  
1000 Rio Brazos Rd., Aztec, NM 87410

DISTRICT IV  
P.O. BOX 2088, SANTA FE, N.M. 87504-2088

State of New Mexico  
Energy, Minerals and Natural Resources Department

Form C-102  
Revised February 10, 1994  
Submit to Appropriate District Office  
State Lease - 4 Copies  
Fee Lease - 3 Copies

OIL CONSERVATION DIVISION

P.O. Box 2088  
Santa Fe, New Mexico 87504-2088

☐ AMENDED REPORT

WELL LOCATION AND ACREAGE DEDICATION PLAT

API Number 30-015-	Pool Code 28509	Pool Name Grayburg-Jackson (7R-Qu-Gb-SA)
Property Code	Property Name PHILLIPS -19- FEDERAL	Well Number 6
OGRID No. 017643	Operator Name PHILLIPS PETROLEUM COMPANY	Elevation 3682'

Surface Location

UL or lot No. G	Section 19	Township 17 S	Range 29 E	Lot Idn	Feet from the 2310	North/South line NORTH	Feet from the 1650	East/West line EAST	County EDDY
--------------------	---------------	------------------	---------------	---------	-----------------------	---------------------------	-----------------------	------------------------	----------------

Bottom Hole Location If Different From Surface

UL or lot No.	Section	Township	Range	Lot Idn	Feet from the	North/South line	Feet from the	East/West line	County
Dedicated Acres 40	Joint or Infill	Consolidation Code	Order No.						

NO ALLOWABLE WILL BE ASSIGNED TO THIS COMPLETION UNTIL ALL INTERESTS HAVE BEEN CONSOLIDATED  
OR A NON-STANDARD UNIT HAS BEEN APPROVED BY THE DIVISION

LOT 1									
27.36 ACRES LOT 2									
27.28 ACRES LOT 3									
27.40 ACRES LOT 4									
27.50 ACRES									

**OPERATOR CERTIFICATION**

I hereby certify the the information contained herein is true and complete to the best of my knowledge and belief.

*L. M. Sanders*  
Signature  
L. M. Sanders  
Printed Name  
Supv., Regulation/Proration  
Title  
, 2000  
Date

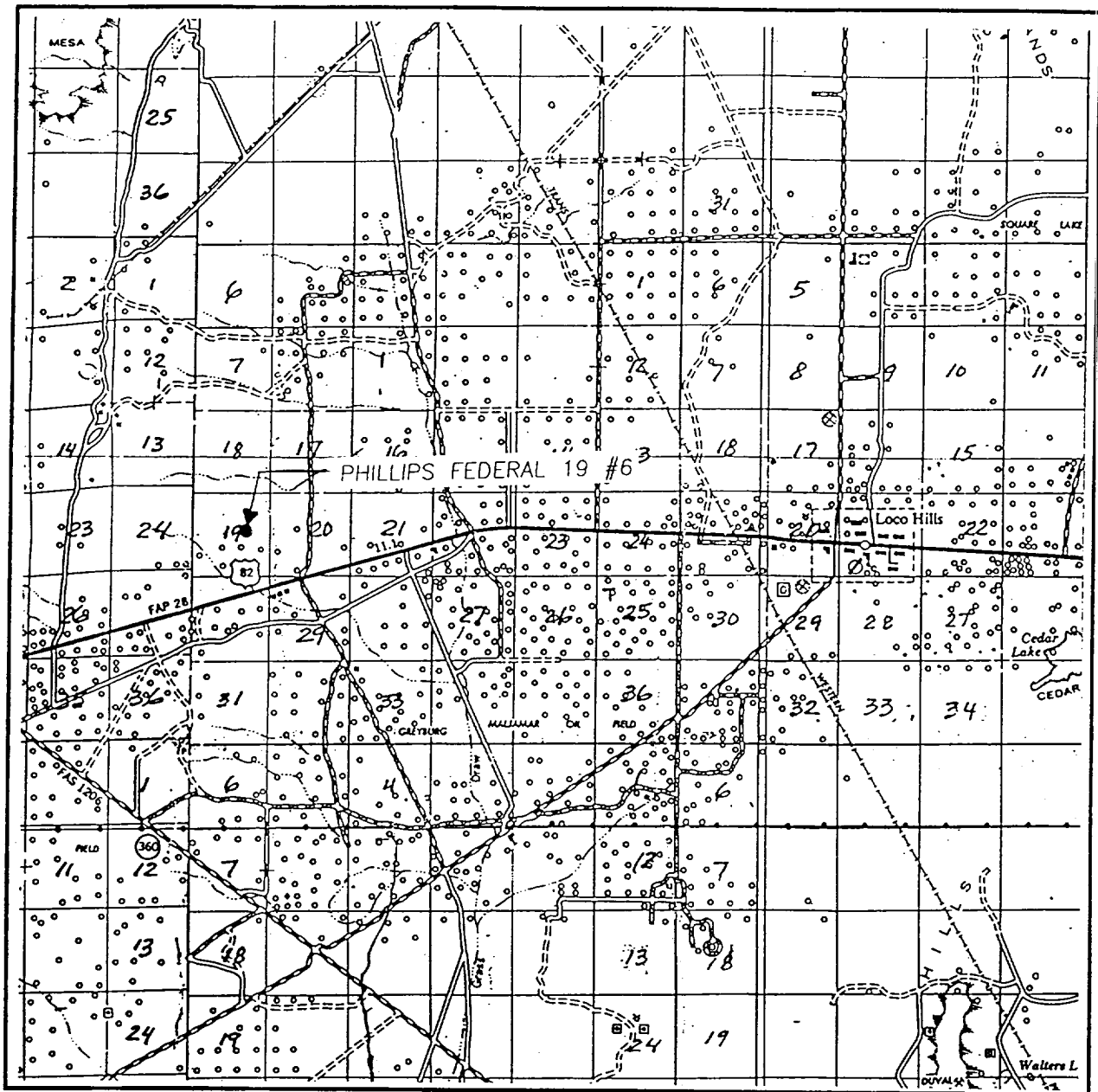
**SURVEYOR CERTIFICATION**

I hereby certify that the well location shown on this plat was plotted from field notes of actual surveys made by me or under my supervision, and that the same is true and correct to the best of my belief.

MAY 12, 2000

Date Surveyed  
Signature & Seal of Professional Surveyor  
RONALD J. EIDSON  
Certificate No. RONALD J. EIDSON 3239  
GARY EIDSON 12641  
KACON McDONALD 12185

## VICINITY MAP



SCALE: 1" = 2 MILES

SEC. 19 TWP. 17-S RGE. 29-E

SURVEY N.M.P.M.

COUNTY EDDY

DESCRIPTION 2310' FNL & 1650' FEL

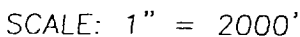
ELEVATION 3682

PHILLIPS  
OPERATOR PETROLEUM COMPANY

LEASE PHILLIPS FEDERAL 19

JOHN WEST SURVEYING  
HOBBS, NEW MEXICO  
(505 393-3117

NORTH



SEC. 19 TWP. 17-S RGE. 29-E

SURVEY \_\_\_\_\_ N.M.P.M.

COUNTY \_\_\_\_\_ EDDY

DESCRIPTION 2310' FNL & 1650' FEL

ELEVATION 3682

PHILLIPS  
OPERATOR PETROLEUM COMPANY

LEASE PHILLIPS FEDERAL 19

U.S.G.S. TOPOGRAPHIC MAP

RED LAKE SE, N.M.

JOHN WEST SURVEYING  
HOBBS, NEW MEXICO  
(505 393-3117

# PHILLIPS PETROLEUM COMPANY

## HYDROGEN SULFIDE DRILLING OPERATIONS PLAN

### I. HYDROGEN SULFIDE TRAINING

All personnel, whether regularly assigned, contracted, or employed on an unscheduled basis, will receive training from a qualified instructor in the following areas prior to commencing drilling operations on this well:

1. The hazards and characteristics of hydrogen sulfide ( $H_2S$ ).
2. The proper use and maintenance of personal protective equipment and life support systems.
3. The proper use of  $H_2S$  detectors, alarms, warning systems, briefing areas, evacuation procedures, and prevailing winds.
4. The proper techniques for first aid and rescue procedures.

In addition, supervisory personnel will be trained in the following areas:

1. The effects of  $H_2S$  on metal components. If high tensile tubulars are to be used, personnel will be trained in their special maintenance requirements.
2. Corrective action and shut-in procedures when drilling or reworking a well and blowout prevention and well control procedures.
3. The contents and requirements of the  $H_2S$  Drilling Operations Plan and the Public Protection Plan.

There will be an initial training session just prior to encountering a known or probable  $H_2S$  zone (within 3 days or 500 feet) and weekly  $H_2S$  and well control drills for all personnel in each crew. The initial training session shall include a review of the site, specific  $H_2S$  Drilling Operations Plan, and the Public Protection Plan. This plan shall be available at the well site. All personnel will be required to carry documentation that they have received the proper training.

### II. $H_2S$ SAFETY EQUIPMENT AND SYSTEMS

NOTE: All  $H_2S$  safety equipment and systems will be installed, tested, and operational when drilling reaches a depth of 500 feet above, or three days prior to penetrating the first zone containing or reasonably expected to contain  $H_2S$ .

1. Well Control Equipment:
  - A. Blind rams and pipe rams to accommodate all pipe sizes with properly sized closing unit.
  - B. Auxiliary equipment to include: annular preventer and rotating head.

2. Protective Equipment for Essential Personnel:  
Five - 30-minute self-contained breathing apparatuses (Scott).
3. H<sub>2</sub>S Detection and Monitoring Equipment:
  - A. Fixed electronic monitoring system and alarms with two monitors: one at shaker and one at bell nipple.
4. Visual Warning Systems:
  - A. Two windsocks with frames and extension poles.
  - B. One entrance sign with flags (with "CAUTION" and present well condition).
  - C. Two briefing area signs.
5. Mud Program:
  - A. The mud program has been designed to minimize the volume of H<sub>2</sub>S circulated to the surface. Proper mud weight, safe drilling practices, and the use of H<sub>2</sub>S scavengers will minimize hazards when penetrating H<sub>2</sub>S bearing zones.
6. Metallurgy:
  - A. All drill strings, casings, tubing, wellhead, blowout preventers, drilling spool, kill lines, choke manifold and lines, and valves shall be suitable for H<sub>2</sub>S service.
7. Communication:
  - A. Radio communications in Company vehicles, including cellular telephone and 2-way radio.
  - B. Land line (telephone) communications at field office.
8. Well Testing:
  - A. Drill stem testing will be performed with a minimum number of personnel in the immediate vicinity which are necessary to safely and adequately conduct the test. The drill stem testing will be conducted during daylight hours and formation fluids will not be flowed to the surface. All drill stem testing operations conducted in an H<sub>2</sub>S environment will use the closed chamber method of testing.

**PHILLIPS PETROLEUM COMPANY**  
**DRILLING PROGRAM**

Attached to BLM Form 3160-3

**Lease Name:** Phillips -19- Federal

**Well No.:** 6

**Location:** 2310' FNL & 1650' FEL

Sec. 19, T-17-S, R-29-E

Eddy Co., NM

1. Geological name of surface location: Triassic
2. Estimated tops of important geological markers:

<u>Name</u>	<u>Depth</u>
Yates	850'
Seven Rivers	1130'
Queen	1715'
Grayburg	2100'
San Andres	2384'
Glorieta	3840'

3. Estimated depths of anticipated fresh water, oil, and gas:

<u>Formation</u>	<u>Depth</u>	<u>Fresh Water/Oil/Gas</u>
Seven Rivers	1130'	Oil
Queen	1715'	Oil
Grayburg	2100'	Oil
San Andres	2385'	Oil
Glorieta	3840'	Oil

4. CASING PROGRAM

<u>Hole Size</u>	<u>Interval</u>	<u>OD Csg.</u>	<u>Weight, Grade, Type</u>
12-1/4"	450'	8-5/8"	24#, J-55, ST&C
7-7/8"	5000'	5-1/2"	17#, J-55, LT&C

CEMENT PROGRAM

Conductor Casing: N/A

8-5/8" Surface Casing:

300 SX Cl "C" + 2% CaCl<sub>2</sub> + 1/4#/sx Flocele

5-1/2" Production Casing:

Stage tool @ +/- 2600'. 1<sup>st</sup> stage 470 sx Ultralite "C" + 5#/sx Kolite + .35% D-65 + .35% D-156 + 2% D-46

2<sup>nd</sup> Stage:

Lead 560 sx 35/65 POZ "C" + 6% D-20 + 2% CaCl + 1/4#/sx cello flakes,  
Tail w/170 sx Class "C" Neat Circulate to Surface.



5. Minimum Specifications for Pressure Control:

The blowout preventer equipment (BOP) schematic attached will consist of a double ram-type (3000 psi WP) preventer and/or a bag-type (hydril) preventer (3000 psi WP). BOP will be hydraulically operated and the ram-type preventer will be equipped with blind rams and appropriate pipe rams. The BOP will be nipped up on the surface casing and used continuously until TD is reached. All BOP's and accessory equipment will be tested to 1000 psi before drilling out of surface casing. Before drilling out of intermediate casing, the ram-type BOP and accessory equipment will be tested to 3000 psi and the hydril to 50% of rated working pressure (1500 psi). Pipe rams will be operationally checked each 24-hour period. Blind rams will be operationally checked on each trip out of the hole. These checks will be noted on the daily tour sheets. A "2" kill line and 3" choke line will be attached to a drilling spool or BOP side outlets. Other accessories to the BOP equipment will include a kelly cock and floor safety valve (inside BOP) and choke lines and choke manifold with 3000 psi WP rating.

6. Types & Characteristics of the Proposed Mud System:

The well will be drilled to TD with a combination of Fresh Water Gel/Brine System.

The applicable depths and properties of this system are as follows:

<u>Depth</u>	<u>Type</u>	<u>Weight (ppg)</u>	<u>Viscosity (sec)</u>	<u>Waterloss (cc)</u>
500'	FW Gel	8.6-9.0	34-45	N/C
5000'	Brine	9.8-10.1	28-30	N/C

Sufficient mud materials to maintain mud properties and meet minimum lost circulation and weight increase requirements will be kept at the wellsite at all times.

7. Auxiliary Well Control and Monitoring Equipment:

- A. A kelly cock will be kept in the drill string at all times.
- B. A full opening drill pipe stabbing valve (inside BOP) with proper drill pipe connections will be on the rig floor at all times.
- C. The drilling fluids system will be visually monitored at all times.
- D. A mudlogging unit will be continuously monitoring drilling penetration rate and hydrocarbon shows from surface casing to T.D.
- E. A fixed electronic H<sub>2</sub>S monitoring system, including alarms with monitors at the shaker and the bell nipple, will be in operation from surface to TD.

8. Logging, Testing, & Coring Program:

- A. Drill stem tests: None anticipated
- B. Electronic logging program: DSN, MSFL, DLL, FMI (optional)
- C. Coring: None

9. Abnormal Conditions, Pressures, Temperatures & Potential Hazards:

Possible sulfur water flow in the Queen/Grayburg intervals.

10. Anticipated Starting Date & Duration of Operations:

Road and location work will not begin until approval has been received from the BLM. The anticipated spud date is upon approval of APD. Once commenced, the drilling operations should be finished within approximately 10 days. If the well is productive, an additional 10 days will be required for completion and testing.

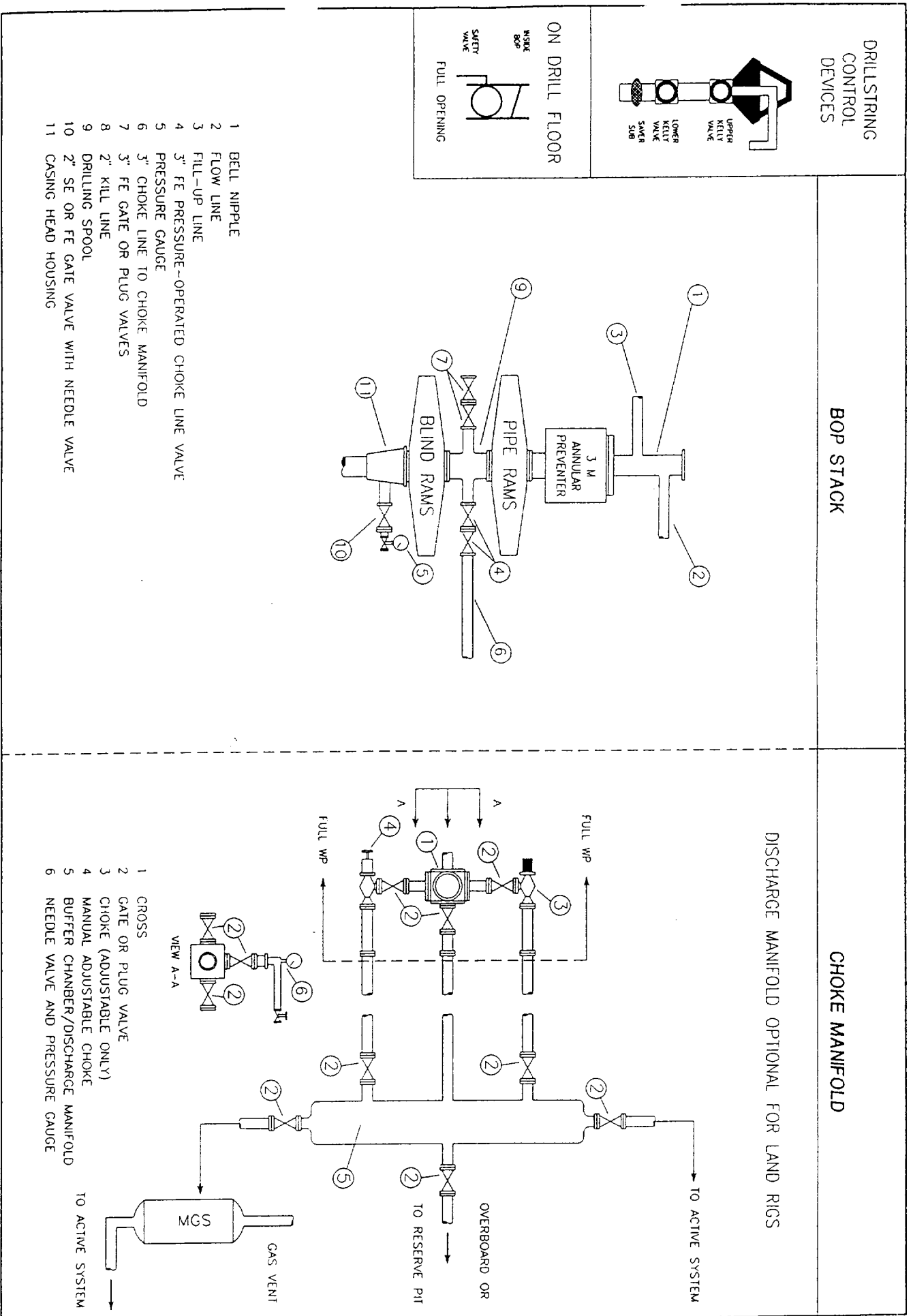
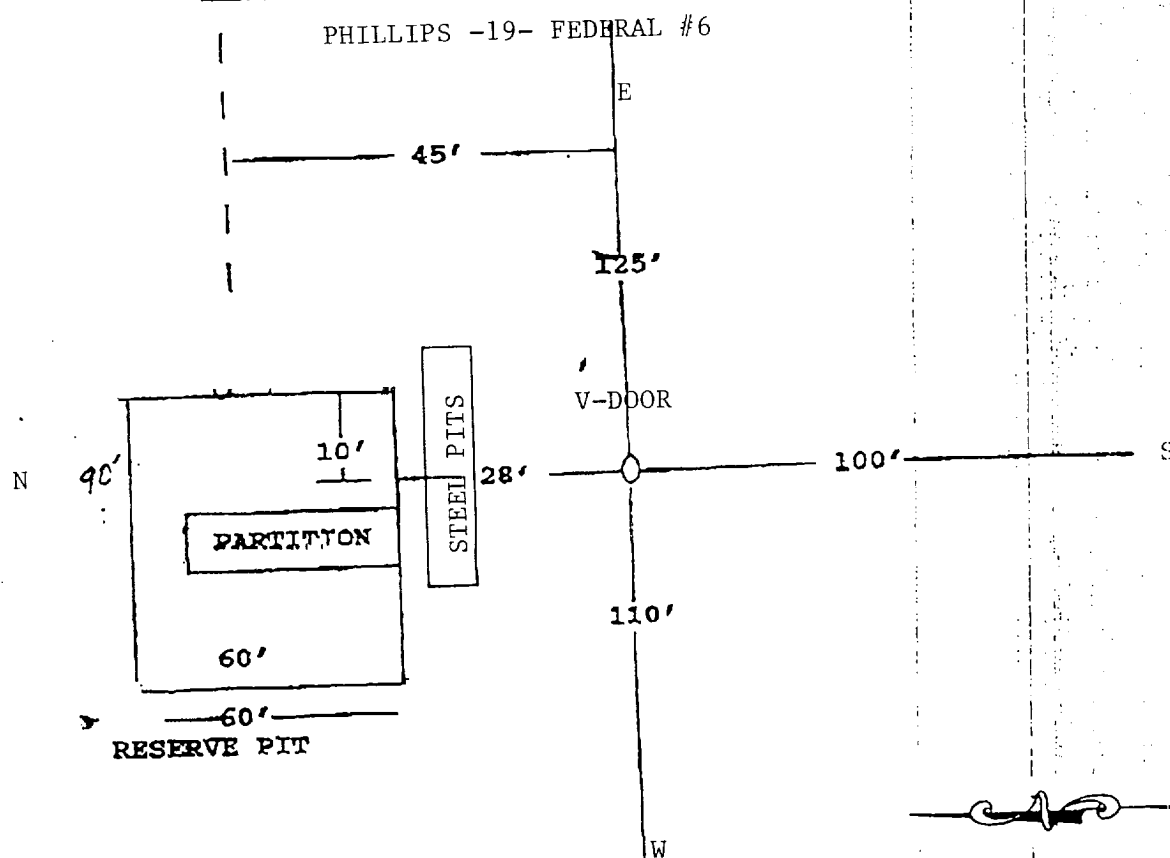


Fig. 2.4. Class 2 BOP and Choke Manifold

# KEY ENERGY DRILLING RIG LOCATION LAYOUT



- STEEL PITS - Key Energy Drilling steel pits sit flat on the ground. Do not dig down any for our pits.
- RESERVE PIT - The reserve pit is usually 90 X 60 with a partition but the size and depth can be adjusted to the depth of the well or location restrictions.
- PIPE RACKS - Key Energy Drilling needs 45 foot above the Reserve Pit for pipe racks.
- SUMP PIT - Should be set 10 foot back from the front of the reserve pit (not even with the front).

NE/4 Sec. 19  
T17S R29E

AD well

Green B #9

Proposed New Tank Battery

Phillips Fed. 19 #5

Proposed Lease Road

Phillips Fed. 19 #1

Phillips Fed. 19 #6

Proposed Lease Road

Phillips Fed. 19 #2

Note: Flowline will be laid on the surface along new lease roads from the wells to the battery.

NE/4 Sec. 19  
T17S R29E

AD well

Green B #9

Proposed New Tank Battery

Phillips Fed. 19 #5

Proposed Lease Road

Phillips Fed. 19 #1

Phillips Fed. 19 #6

Proposed Lease Road

Phillips Fed. 19 #2

Note: Flowline will be laid on the surface along new lease roads from the wells to the battery.

NE/4 Sec. 19  
T17S R29E

AD well

Green B #9

Proposed New Tank Battery

Phillips Fed. 19 #5

Proposed Lease Road

Phillips Fed. 19 #1

Phillips Fed. 19 #6

Proposed Lease Road

Phillips Fed. 19 #2

Note: Flowline will be laid on the surface along new lease roads from the wells to the battery.

HC-ORIGINAL

**PHILLIPS PETROLEUM COMPANY  
SURFACE USE PLAN**

**Attached to Form 3160-3**

**Lease Name:** Phillips -19- Federal

**Well No.:** #6

**Location:** 2310' FNL & 1650' FEL  
Sec. 19, T-17-S, R-29-E

**1. Existing Roads:**

- A. The well site and elevation for the proposed well are shown on the attached plat.
- B. Existing roads are indicated on attached map. Existing roads are adequate for travel during drilling and production operations. Upgrading of the road prior to drilling well will be done when necessary as determined during the onsite inspection.
- C. Directions to location: On Hwy. 82 approximately 6 miles West of Loco Hills, NM, turn North ½ mile on Old Loco Hills Rd., then 1 mile West.
- D. Routine grading and maintenance of existing roads will be conducted as necessary to maintain their condition as long as any operations continue on this lease.

**2. Proposed Access Roads:**

Attached map indicates the proposed new access road to be constructed. The road will be constructed as follows:

- A. The maximum width of the running surface will be 20'. The road will be crowned and ditched and constructed of 6" rolled and compacted caliche. Ditches will be 3:1 slope and 4 feet wide. Water will be diverted where necessary to avoid ponding, prevent erosion, maintain good drainage, and to be consistent with local drainage patterns. BLM may specify any additions or changes during the onsite inspection.
- B. The average grade will be less than 1%.
- C. No turnouts are planned.
- D. Culverts, cattle guards, low-water crossings, fence cuts:
- E. Surface material will consist of native caliche. Caliche will be obtained from nearest BLM approved pit. Any additional materials required will be purchased from the dirt contractor.
- F. The proposed access road will be centerline flagged.

**3. Location of Existing Wells:** No existing wells on this lease.

**4. Location of Existing and/or Proposed Facilities:**

- A. **Tank Battery:** To be located at the Phillips Green B #9 location.
- B. **Flowlines:** See attached Property Line & Road Diagram

5. **Location and Type of Water Supply:** To be hauled by contract trucking company

6. **Source of Construction Materials:**

All caliche required for construction of the drill pad and the proposed new access road will be obtained from a BLM approved caliche pit.

7. **Methods of Handling Waste Disposal:**

- A. Drill cuttings not retained for evaluation purposes will be disposed of into the reserve pit.
- B. Drilling fluids will be contained in steel mud tanks. The reserve pit will contain any excess drilling fluid or flow from the well during drilling, cementing, and completion operations. The reserve pit will be an earthen pit, approximately 60'X90'X10' deep and fences on three sides prior to drilling. It will be fenced on the fourth side immediately following rig removal. The reserve pit will be plastic-lined to minimize loss of drilling fluids and saturation of the ground with brine water.
- C. Water produced from the well during completion may be disposed into the reserve pit or steel tank. After the well is permanently placed on production, produced water will be collected in tanks until hauled by transport to an approved disposal system or separate disposal application will be submitted for appropriate approval. Produced oil will be collected in steel tanks until sold.
- D. A portable chemical toilet will be provided on the location for human waste during the drilling and completion operations.
- E. Garbage and trash produced during drilling and completion will be put in trash trailer. If well is productive, maintenance waste will be placed in special trash cans and hauled away periodically. All waste material will be contained to prevent scattering by the wind. No toxic waste or hazardous chemicals will be produced by this operation.
- F. After the rig is moved out and the well is either completed or abandoned, all waste materials will be cleaned-up within 30 days. No adverse materials will be left on the location. The reserve pit will be completely fenced and netted and kept closed until it has dried. When the reserve pit is dry enough to break out and fill and, as weather permits, the unused portion of the well site will be leveled and re-seeded as per BLM specifications. Only the part of the pad required for production will be kept in use. In the event of a dry hole, only a dry hole marker will remain.

8. **Ancillary Facilities:**

No airstrip, campsite, or other facilities will be built as a result of the operations of this well.

9. **Well Site Layout:**

- A. **Drill pad:** Per attached plat.
- B. Attached plat shows planned orientation for the rig and associated drilling equipment, reserve pit, pipe racks, turnaround and parking areas, and access road. No permanent living facilities are planned, but a temporary foreman/toolpusher's trailer will be on location during the drilling operations.
- C. The reserve pit will be lined with a high-quality plastic sheeting.

10. **Plans for Restoration of the Surface:**

- A. Upon completion of the proposed operations, if the well is to be abandoned, the caliche will be removed from the location and road and returned to the pit from which it was taken. The pit area, after allowing to dry, will be

broken out and leveled. The original topsoil will be returned to the entire location, which will be leveled and contoured to as nearly to the original topography as possible.

All trash, garbage, and pit lining will be buried or hauled away in order to leave the location in an aesthetically pleasing condition. All pits will be filled and the location leveled within 120 days after abandonment.

- B. The disturbed area will be re-vegetated by re-seeding during the proper growing season with a seed mixture of native grasses as recommended by the BLM.
- C. Three sides of the reserve pit will be fenced prior to and during drilling operations. At the time the rig is removed; the reserve pit will be fenced on the rig (fourth) side and netted to prevent livestock or wildlife from being entrapped.

The fencing and netting will remain in place until the pit area is cleaned up and leveled. No oil will be left on the surface of the fluid in the pit. The entire reserve pit will be netted until the fluid has completely evaporated.

- D. Upon completion of the proposed operations, if the well is completed; the reserve pit area will be treated as outlined above within the same prescribed time. Topsoil removed from the drill site will be used to re-contour the pit area; any uncased portions of the drill pad to the original natural level and re-seeded as per BLM specifications.

11. **Surface Ownership:**

The wellsite and lease is located entirely on Federal surface.

12. **Other Information:**

- A. **Terrain:** See Archaeological Report
- B. **Soil:** See Archaeological Report
- C. **Vegetation:** See Archaeological Report
- D. **Surface Use:** See Archaeological Report
- E. **Ponds and Streams:** None
- F. **Water Wells:** None
- G. **Residences and Buildings:** None
- H. **Arroyos, Canyons, Etc.:** None
- I. **Well Sign:** To be installed at the wellsite
- J. **Archaeological Resources:** None reported. Reference archaeological report.

13. **Lessee's and Operator's Representative:**

The Phillips Petroleum Company representatives responsible for assuring compliance with the Surface Use Plan are:

Louis Robinson  
4001 Penbrook St.  
Odessa, TX 79762  
(915) 368-1556

or

J. B. Morgan  
4001 Penbrook St.  
Odessa, TX 79762  
(915) 368-1262



14. **Certification:**

I hereby certify that I, or persons under my direct supervision, have inspected the drill site and access route; that I am familiar with the conditions which presently exist; that the statements made in this plan are, to the best of my knowledge, true and correct; and that the work associated with the operations proposed herein will be performed by Phillips Petroleum Company and its contractors and subcontractors in conformity with this plan and the terms and conditions under which it is approved.

*Curst A. Dale for: L.M.S.*

L. M. Sanders  
Supervisor, Regulation/Proration  
June 12, 2000

---