

Form 3160-5
(June 1990)

UNITED STATES
DEPARTMENT OF THE INTERIOR
BUREAU OF LAND MANAGEMENT

N.M. Oil Cons. Division
811 S. 1st Street
Artesia, NM 88210-2834

FORM APPROVED
Budget Bureau No. 1004-0135
Expires: March 31, 1993

5. Lease Designation and Serial No.
LC-028784A

6. If Indian, Allottee or Tribe Name

7. If Unit or CA, Agreement Designation

BURCH KEELY UNIT

8. Well Name and No.

BURCH KEELY UNIT #306

9. API Well No.

30-015-31321

10. Field and Pool, or Exploratory Area

GRBG JACKSON SR Q GRBG SA

11. County or Parish, State

EDDY CO., NM

SUNDRY NOTICES AND REPORTS ON WELLS

Do not use this form for proposals to drill or to deepen or reentry to a different reservoir.
Use "APPLICATION FOR PERMIT-" for such proposals

SUBMIT IN TRIPLICATE

1. Type of Well

☒ Oil Well ☐ Gas Well ☐ Other

2. Name of Operator

MARBOB ENERGY CORPORATION

3. Address and Telephone No.

P.O. BOX 227, ARTESIA, NM 88210 505-748-3303

4. Location of Well (Footage, Sec., T., R., M., or Survey Description)

2615 FNL 1875 FWL, SEC. 26-T17S-R29E UNIT F

12. CHECK APPROPRIATE BOX(s) TO INDICATE NATURE OF NOTICE, REPORT, OR OTHER DATA

TYPE OF SUBMISSION

☐ Notice of Intent

☒ Subsequent Report

☐ Final Abandonment Notice

TYPE OF ACTION

☐ Abandonment

☐ Recompletion

☐ Plugging Back

☐ Casing Repair

☐ Altering Casing

☒ Other CHANGE NAME OF WELL

☐ Change of Plans

☐ New Construction

☐ Non-Routine Fracturing

☐ Water Shut-Off

☐ Conversion to Injection

☐ Dispose Water

(Note: Report results of multiple completion on Well Completion or Recompletion Report and Log form.)

13. Describe Proposed or Completed Operations (Clearly state all pertinent details, and give pertinent dates, including estimated date of starting any proposed work. If well is directionally drilled, give subsurface locations and measured and true vertical depths for all markers and zones pertinent to this work.)*

WE ARE CHANGING THE NAME OF THE WELL TO: BURCH KEELY UNIT #306

FROM: BURCH KEELY UNIT #872



14. I hereby certify that the foregoing is true and correct

Signed

Robin Cockrum

Title PRODUCTION ANALYST

Date 07/03/00

(This space for Federal or State office use)

LARRY D. BRAY

Title

Assistant Field Manager
Lands And Minerals

Date

AUG 29 2000

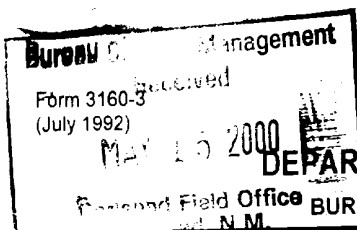
Approved by
Conditions of approval, if any:

APPROVED FOR 1 YEAR

Title 18 U.S.C. Section 1001, makes it a crime for any person knowingly and willfully to make to any department or agency of the United States any false, fictitious or fraudulent statements or representations as to any matter within its jurisdiction.

*See Instruction on Reverse Side

APPROVED
24-0136
1895



UNITED STATES
DEPARTMENT OF THE INTERIOR
BUREAU OF LAND MANAGEMENT

SUBMIT IN TRIPPLICATE*
(Other instructions on
reverse side)

FORM APPROVED
OMB NO. 1004-0136
Expires: February 28, 1995

APPLICATION FOR PERMIT TO DRILL OR DEEPEN

5. LEASE DESIGNATION AND SERIAL NO.
LC-028784A

6. IF INDIAN, ALLOTTEE OR TRIBE NAME

1a. TYPE OF WORK

DRILL ☒

DEEPEN ☐

b. TYPE OF WELL

OIL
WELL ☒

GAS
WELL ☐

OTHER ☐

SINGLE
ZONE ☐

MULTIPLE
ZONE ☐

7. UNIT AGREEMENT NAME

BURCH KEELY UNIT

8. FARM OR LEASE NAME, WELL NO.

BURCH KEELY UNIT #872 #306

9. API WELL NO.

30-015-31321

10. FIELD AND POOL, OR WILDCAT

GRBG JACKSON SR Q GRBG SA

11. SEC., T., R., M., OR BLK.
AND SURVEY OR AREA

SEC. 26-T17S-R29E

12. COUNTY OR PARISH

EDDY

13. STATE

NM

2. NAME OF OPERATOR

MARBOB ENERGY CORPORATION

3. ADDRESS AND TELEPHONE NO.

P.O. BOX 227, ARTESIA, NM 88210 505-748-3303

4. LOCATION OF WELL (Report location clearly and in accordance with any State requirements.)*

At surface 2615 FNL 1875 FWL

A: proposed prod. zone

SAME

Unit F

14. DISTANCE IN MILES AND DIRECTION FROM NEAREST TOWN OR POST OFFICE*

EAST OF ARTESIA ON US 82 APPX 21.7 MILES

15. DISTANCE FROM PROPOSED*
LOCATION TO NEAREST
PROPERTY OR LEASE LINE, FT.
(Also to nearest drg. unit line, if any)

1875'

16. NO. OF ACRES IN LEASE

1440

17. NO. OF ACRES ASSIGNED
TO THIS WELL

40

18. DISTANCE FROM PROPOSED LOCATION*
TO NEAREST WELL, DRILLING, COMPLETED,
OR APPLIED FOR, ON THIS LEASE, FT.

19. PROPOSED DEPTH

4800'

20. ROTARY OR CABLE TOOLS

ROTARY

21. ELEVATIONS (Show whether DF, RT, GR, etc.)

3576' GR

22. APPROX. DATE WORK WILL START*

06/08/00

23.

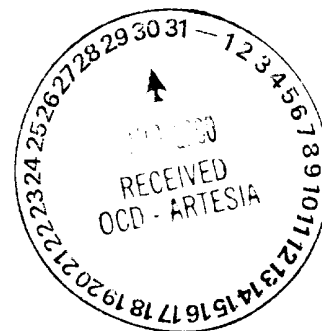
PROPOSED CASING AND CEMENTING PROGRAM

SIZE OF HOLE	GRADE, SIZE OF CASING	WEIGHT PER FOOT	SETTING DEPTH	QUANTITY OF CEMENT
12 1/4"	J-55, 8 5/8"	24#	350'	300 SX
7 7/8"	J-55, 5 1/2"	17#	4800'	SUFFICIENT TO COVER 200' ABOVE ALL KNOWN O&G HORIZONS

PAY ZONE WILL BE SELECTIVELY PERFORATED AND STIMULATED AS NEEDED FOR OPTIMUM PRODUCTION.

ATTACHED ARE: 1. WELL LOCATION AND ACREAGE DEDICATION PLAT
2. SURFACE USE PLAN
3. SUPPLEMENTAL DRILLING DATA

MASTER SURFACE USE PLAN ON FILE AT BLM ROSWELL



IN ABOVE SPACE DESCRIBE PROGRAM: If proposal is to deepen, give data on present productive zone and proposed new productive zone. If proposal is to drill or deepen directionally, give pertinent data on subsurface locations and measured and true vertical depths. Give blowout preventer program, if any.

24.

SIGNED

Roxin Cockburn

TITLE PRODUCTION ANALYST

DATE 05/08/00

(This space for Federal or State office use)

PERMIT NO.

APPROVAL DATE

Application approval does not warrant or certify that the applicant holds legal or equitable title to those rights in the subject lease which would entitle the applicant to conduct operations thereon.
CONDITIONS OF APPROVAL, IF ANY:

APPROVED BY

APPROVED BY

TITLE

Assistant Field Manager,
Lands And Minerals

DATE

*See Instructions On Reverse Side

APPROVED FOR 1 YEAR

Title 18 U.S.C. Section 1001, makes it a crime for any person knowingly and willfully to make to any department or agency of the United States any false fictitious or fraudulent statements or representations as to any matter within its jurisdiction.

RECEIVED
MAY 09 2000
BLM
ROSWEILL, NM

DISTRICT I
P.O. Box 1980, Hobbs, NM 88241-1980

State of New Mexico
Energy, Minerals and Natural Resources Department

Form C-102
Revised February 10, 1994
Submit to Appropriate District Office
State Lease - 4 Copies
Fee Lease - 3 Copies

DISTRICT II
P.O. Drawer DD, Artesia, NM 88211-0719

DISTRICT III
1000 Rio Brazos Rd., Aztec, NM 87410

DISTRICT IV
P.O. BOX 2088, SANTA FE, N.M. 87504-2088

OIL CONSERVATION DIVISION

P.O. Box 2088
Santa Fe, New Mexico 87504-2088

☐ AMENDED REPORT

WELL LOCATION AND ACREAGE DEDICATION PLAT

API Number	Pool Code 28509	Pool Name GRBG JACKSON SR Q GRBG SA
Property Code 6497	Property Name BURCH KEELY UNIT	Well Number 872
OGRID No. 14049	Operator Name MARBOB ENERGY CORPORATION	Elevation 3576

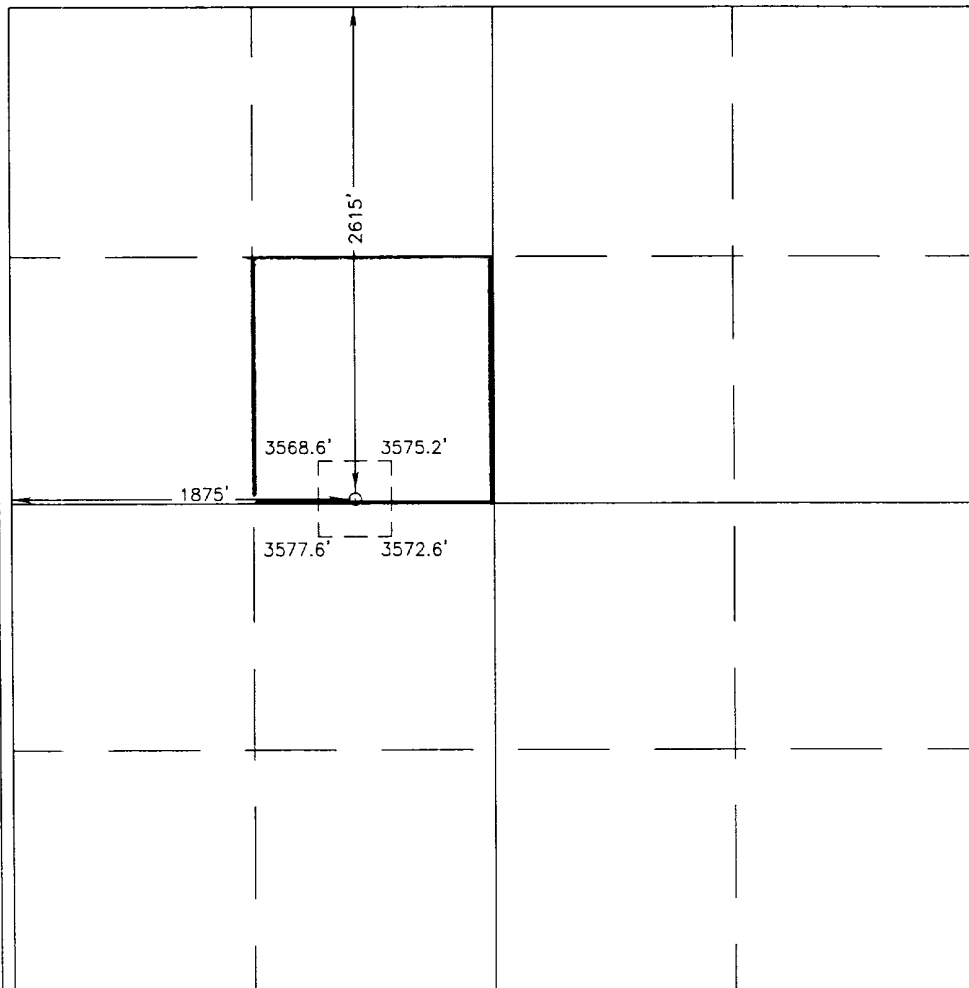
Surface Location

UL or lot No. F	Section 26	Township 17 S	Range 29 E	Lot Idn	Feet from the 2615	North/South line NORTH	Feet from the 1875	East/West line WEST	County EDDY
--------------------	---------------	------------------	---------------	---------	-----------------------	---------------------------	-----------------------	------------------------	----------------

Bottom Hole Location If Different From Surface

UL or lot No.	Section	Township	Range	Lot Idn	Feet from the	North/South line	Feet from the	East/West line	County
Dedicated Acres 40	Joint or Infill	Consolidation Code	Order No.						

NO ALLOWABLE WILL BE ASSIGNED TO THIS COMPLETION UNTIL ALL INTERESTS HAVE BEEN CONSOLIDATED
OR A NON-STANDARD UNIT HAS BEEN APPROVED BY THE DIVISION

	<p>OPERATOR CERTIFICATION</p> <p>I hereby certify the the information contained herein is true and complete to the best of my knowledge and belief.</p> <p><u>Robin Cockrum</u> Signature</p> <p>ROBIN COCKRUM Printed Name</p> <p>PRODUCTION ANALYST Title</p> <p>5/5/00 Date</p> <p>SURVEYOR CERTIFICATION</p> <p>I hereby certify that the well location shown on this plat was plotted from field notes of actual surveys made by me or under my supervision, and that the same is true and correct to the best of my belief.</p> <p>APRIL 11, 2000</p> <p>Date Surveyed DC</p> <p>Signature & Seal of Professional Surveyor</p> <p><u>Ronald J. Eidson</u> 4/13/00 00-11-0443</p> <p>Certificate No. RONALD J. EIDSON 3239 GARY EIDSON 12641 MACON McDONALD 12185</p>
-------------------------------------------------------------------------------------	--------------------------------------------------------------------------------------------------------------------------------------------------------------------------------------------------------------------------------------------------------------------------------------------------------------------------------------------------------------------------------------------------------------------------------------------------------------------------------------------------------------------------------------------------------------------------------------------------------------------------------------------------------------------------------------------------------------------------------------------------------------------------------------------------------------------------

DRILLING PROGRAM

**Burch Keely Unit No. 872
2615' FNL and 1875' FWL
Section 26-17S-29E
Eddy County, New Mexico**

10. Anticipated Starting Date and Duration of Operations

Spud Date: Approximately June 8, 2000

Duration of Operations: Once commenced, the drilling operations should be completed in approximately 21 days. If the well is productive, an additional 30 to 60 days will be required for completion and testing of the well.

SURFACE USE AND OPERATING PLAN

**Burch Keely Unit No. 872
2615' FNL and 1875' FWL
Section 26-17S-29E
Eddy County, New Mexico**

1.(c) Directions to Locations: Proceed east on U.S. 82 from Artesia, approx. 21.7 miles, to Two Trees road. Turn south and proceed .9 miles. Turn west and proceed .2 miles. Turn south and proceed .1 mile. Location is on the west side of the lease road.

4.(a) If productive, this well will use Satellite "E".

Form 3160-5
(June 1990)

UNITED STATES
DEPARTMENT OF THE INTERIOR
BUREAU OF LAND MANAGEMENT

JUN 21 1999

FORM APPROVED
Budget Bureau No. 1004-0135
Expires: March 31, 1993

SUNDRY NOTICES AND REPORTS ON WELLS

Do not use this form for proposals to drill or to deepen or reentry to a different reservoir.
Use "APPLICATION FOR PERMIT-" for such proposals

SUBMIT IN TRIPLICATE

1. Type of Well
☒ Oil Well ☐ Gas Well ☐ Other

2. Name of Operator
MARBOB ENERGY CORPORATION

3. Address and Telephone No.
P.O. BOX 227, ARTESIA, NM 88210 505-748-3303

4. Location of Well (Footage, Sec., T., R., M., or Survey Description)
T17S-R29E
T17S-R30E
T17S-R31E

5. Lease Designation and Serial No.

6. If Indian, Allottee or Tribe Name

7. If Unit or CA, Agreement Designation

8. Well Name and No.

9. API Well No.

10. Field and Pool, or Exploratory Area

11. County or Parish, State

EDDY CO., NM

12. CHECK APPROPRIATE BOX(s) TO INDICATE NATURE OF NOTICE, REPORT, OR OTHER DATA

TYPE OF SUBMISSION

- ☐ Notice of Intent
☐ Subsequent Report
☐ Final Abandonment Notice

TYPE OF ACTION

- ☐ Abandonment
☐ Recompletion
☐ Plugging Back
☐ Casing Repair
☐ Altering Casing
☒ Other TEST BOPS

- ☐ Change of Plans
☐ New Construction
☐ Non-Routine Fracturing
☐ Water Shut-Off
☐ Conversion to Injection
☐ Dispose Water

(Note: Report results of multiple completion on Well Completion or Recompletion Report and Log form.)

13. Describe Proposed or Completed Operations (Clearly state all pertinent details, and give pertinent dates, including estimated date of starting any proposed work. If well is directionally drilled, give subsurface locations and measured and true vertical depths for all markers and zones pertinent to this work.)*

DUE TO THE LOW BOTTOM HOLE PRESSURE OF FORMATIONS ABOVE 6000', WE ARE REQUESTING BLANKET APPROVAL FOR WELLS IN THE ABOVE LOCATIONS TO TEST BOPS ON SURFACE CASING TO 1000#

THIS SUNDRY IS APPROVED FOR MARBOB TO HAVE A BLANKET APPROVAL FOR TESTING BOPS.

HOWEVER, THE OPERATOR WILL STATE ON EACH APD THIS APPLIES TO IN ORDER TO

REMIND AND/OR BRING NOTICE TO THE BLM OFFICE AND ENGINEER REVIEWING THE APD

THAT THE WELL'S BOPE TESTING IS COVERED BY A BLANKET APPROVAL FOR THESE LOCATIONS

14. I hereby certify that the foregoing is true and correct

Signed Robin Cochrane

Title PRODUCTION ANALYST

Date 05/25/99

(This space for Federal or State office use)

Approved by [Signature]

Title PETROLEUM ENGINEER

Date JUN 16 1999

Conditions of approval, if any:

Title 18 U.S.C. Section 1001, makes it a crime for any person knowingly and willfully to make to any department or agency of the United States any false, fictitious or fraudulent statements or representations as to any matter within its jurisdiction.

*See Instruction on Reverse Side

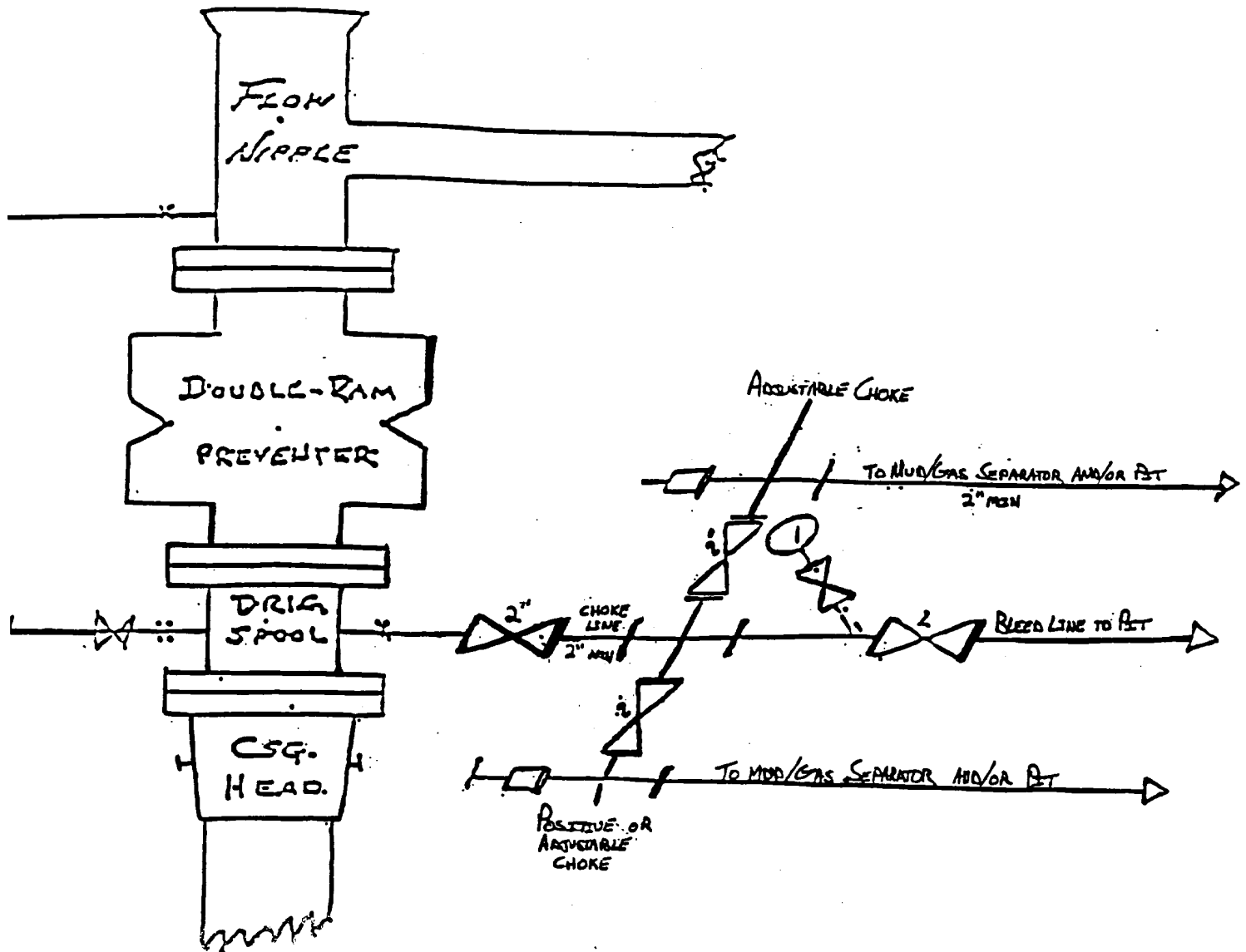
These requirements supercede those issued in your existing, approved APD's for the shallow wells located in T. 17 S., Rgs. 29, 30 and 31 E., NMPM. If you have any question regarding this matter please call John S. Simitz at (505) 627-0288 or Armando A. Lopez at (505) 627-0248.

Sincerely,

A handwritten signature in cursive script that reads "Larry D. Bray".

Larry D. Bray
Acting Assistant Field Office Manager,
Lands and Minerals

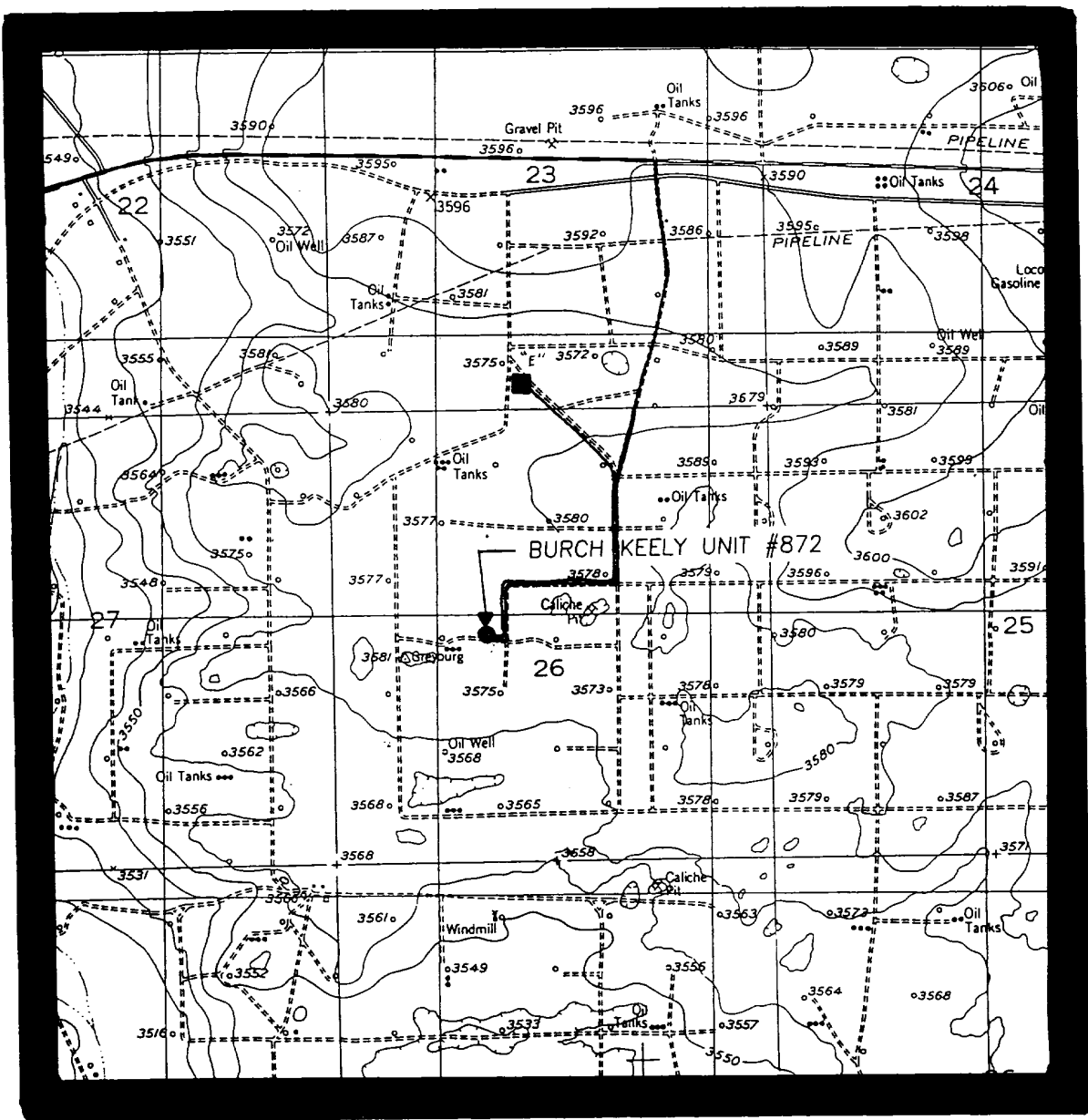
BLOCK OUT PREVENTER AND CHOKE MANIFOLD



10"/900 Cameron SS Space Saver
3000# Working Pressure
3000# Working Pressure Choke Manifold

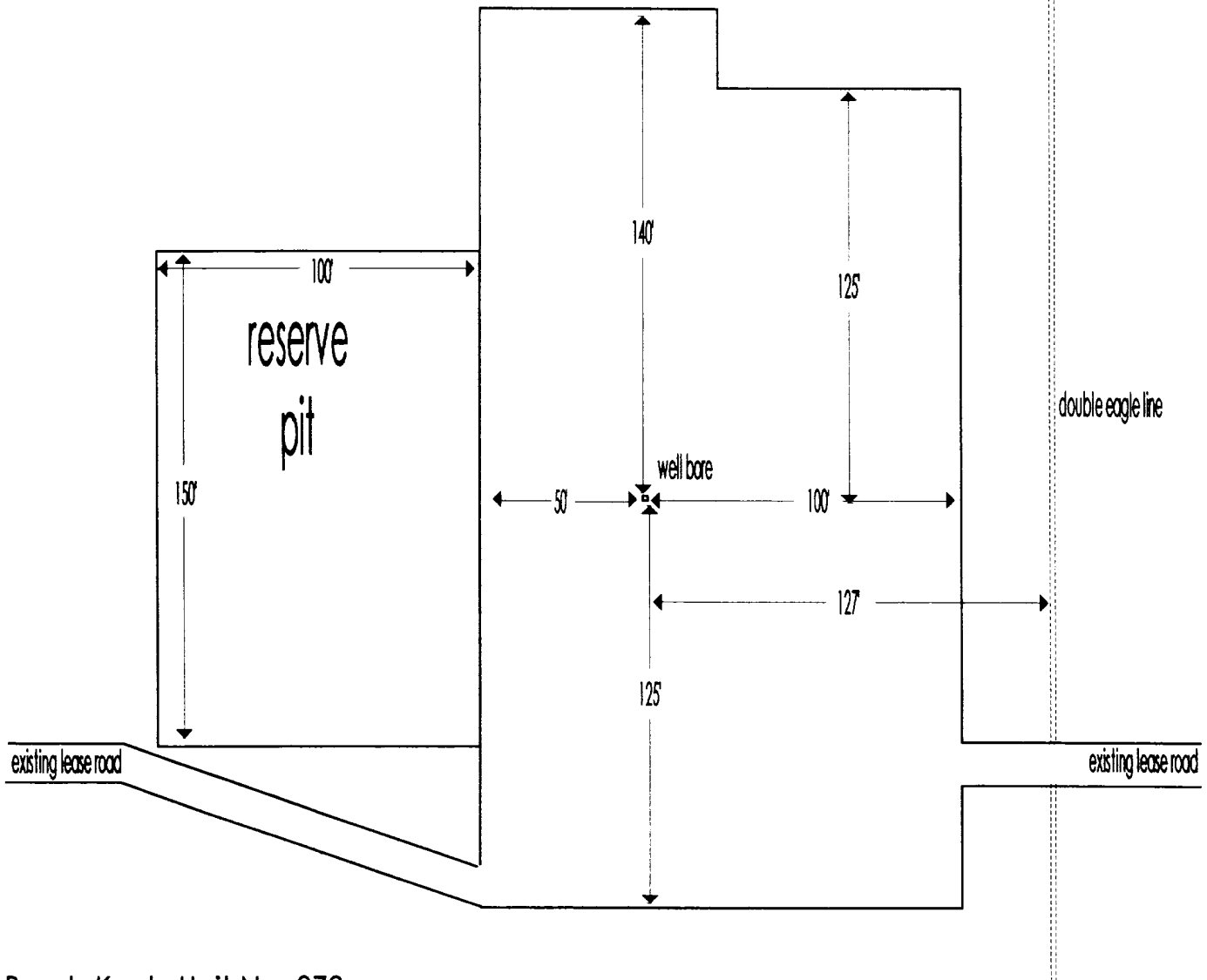
Attachment to Exhibit #1
NOTES REGARDING THE BLOWOUT PREVENTERS

1. Drilling nipple to be so constructed that it can be removed without use of a welder through rotary table opening, with minimum I.D. equal to preventer bore.
2. Wear ring to be properly installed in head.
3. Blow out preventer and all fittings must be in good condition, 3000 psi W.P. minimum.
4. All fittings to be flanged.
5. Safety valve must be available on rig floor at all times with proper connections, valve to be full bore 3000 psi W.P. minimum.
6. All choke and fill lines to be securely anchored, especially ends of choke lines.
7. Equipment through which bit must pass shall be at least as large as the diameter of the casing being drilled through.
8. Kelly cock on kelly.
9. Extension wrenches and hand wheels to be properly installed.
10. Blow out preventer control to be located as close to driller's position as feasible.
11. Blow out preventer closing equipment to include minimum 40 gallon accumulator, two independent sources of pump power on each closing unit installation, and meet all API specifications.



Burch Keely Unit No. 872
2615' FNL & 1875' FWL
Section 26; T17S - R29E
Eddy County, New Mexico

North



Burch Keely Unit No. 872
2615' FNL & 1875' FWL
Section 26; T17S - R29E
Eddy County, New Mexico

Exhibit Four