

District I
PO Box 1980, Hobbs, NM 88241-1980

District II
811 South First, Artesia, NM 88210

District III
1000 Rio Brazos Rd., Aztec, NM 87410

District IV
2040 South Pacheco, Santa Fe, NM 87505

State of New Mexico
Energy, Minerals & Natural Resources Department

OIL CONSERVATION DIVISION
2040 South Pacheco
Santa Fe, NM 87505

Form C-101
Revised October 18, 1994
Instructions on back
Submit to Appropriate District Office
State Lease - 6 Copies
Fee Lease - 5 Copies

☐ AMENDED REPORT

APPLICATION FOR PERMIT TO DRILL, RE-ENTER, DEEPEN, PLUG BACK, OR ADD A ZONE

¹ Operator Name and Address MARBOB ENERGY CORPORATION PO BOX 227 ARTESIA, NM 88210		² OGRID Number 14049
		³ API Number 30-0 15-31950
⁴ Property Code 24828	⁵ Property Name MUSKEGON SOUTH STATE	⁶ Well No. 3

⁷Surface Location

UL or lot no.	Section	Township	Range	Lot Idn	Feet from the	North/South line	Feet from the	East/West Line	County
I	20	17S	29E		1650	SOUTH	860	EAST	EDDY

⁸Proposed Bottom Hole Location If Different From Surface

UL or lot no.	Section	Township	Range	Lot Idn	Feet from the	North/South
⁹ Proposed Pool 1 EAST EMPIRE YESO						Cement to cover all oil, gas & water bearing zones.

¹¹ Work Type Code N	¹² Well Type Code O	¹³ Cable/Rotary R	¹⁴ Lease Type Code S	¹⁵ Ground Level Elevation 3600
¹⁶ Multiple No	¹⁷ Proposed Depth 4600	¹⁸ Formation	¹⁹ Contractor L&M	²⁰ Spud Date 08-24-01

²¹Proposed Casing and Cement Program

Hole Size	Casing Size	Casing weight/foot	Setting Depth	Sacks of Cement	Estimated TOC
12 1/4"	7 7/8"	24#	350'	300	CIRC To surface
7 7/8"	5 1/2"	17#	4600'	SUFFICIENT TO COVER	
				200' ABOVE ALL KNOWN	
			Water bearing	O&G HORIZONS	

²²Describe the proposed program. If this application is to DEEPEN or PLUG BACK give the data on the present productive zone and proposed new productive zone. Describe the blowout prevention program, if any. Use additional sheets if necessary.

DRILL 12 1/4" HOLE TO 350', SET 8 5/8" CSG & CIRC CMT, NU 3000# BOPE - DRILL 7 7/8" HOLE TO TD @ APPX 4600', SET 5 1/2" CSG TO TD & CMT W/SUFFICIENT CMT TO COVER PRODUCTION ZONE PLUS A MINIMUM OF 200' OF CMT ABOVE PRODUCTION ZONE

SEE EXHIBIT ATTACHED

²³I hereby certify that the information given above is true and complete to the best of my knowledge and belief.

Signature:

Printed name: DIANA J. CANNON

Title: PRODUCTION ANALYST

Date: 08-10-01

Phone: 748-3303

B61 OIL CONSERVATION DIVISION

Approved By:

ORIGINAL SIGNED BY TIM W. GUM
DISTRICT II SUPERVISOR

Title:

Approval Date:

AUG 13 2001

Expiration Date:

AUG 13 2002

Conditions of Approval:

Attached: ☐

DISTRICT I
P.O. Box 1980, Hobbs, NM 88241-1980

DISTRICT II
P.O. Drawer DD, Artesia, NM 88211-0719

DISTRICT III
1000 Rio Brazos Rd., Aztec, NM 87410

DISTRICT IV
P.O. Box 2088, Santa Fe, N.M. 87504-2088

State of New Mexico
Energy, Minerals and Natural Resources Department

OIL CONSERVATION DIVISION
P.O. Box 2088
Santa Fe, New Mexico 87504-2088

Form C-102
Revised February 10, 1994
Submit to Appropriate District Office
State Lease - 4 Copies
Fee Lease - 3 Copies

WELL LOCATION AND ACREAGE DEDICATION PLAT

☐ AMENDED REPORT

API Number	Pool Code	Pool Name
	96610	EAST EMPIRE YESO
Property Code	Property Name	Well Number
24828	MUSKEGON SOUTH STATE	3
OGRID No.	Operator Name	Elevation
14049	MARBOB ENERGY CORPORATION	3600'

Surface Location

UL or lot No.	Section	Township	Range	Lot Idn	Feet from the	North/South line	Feet from the	East/West line	County
1	20	17-S	29-E		1650	SOUTH	860'	EAST	EDDY

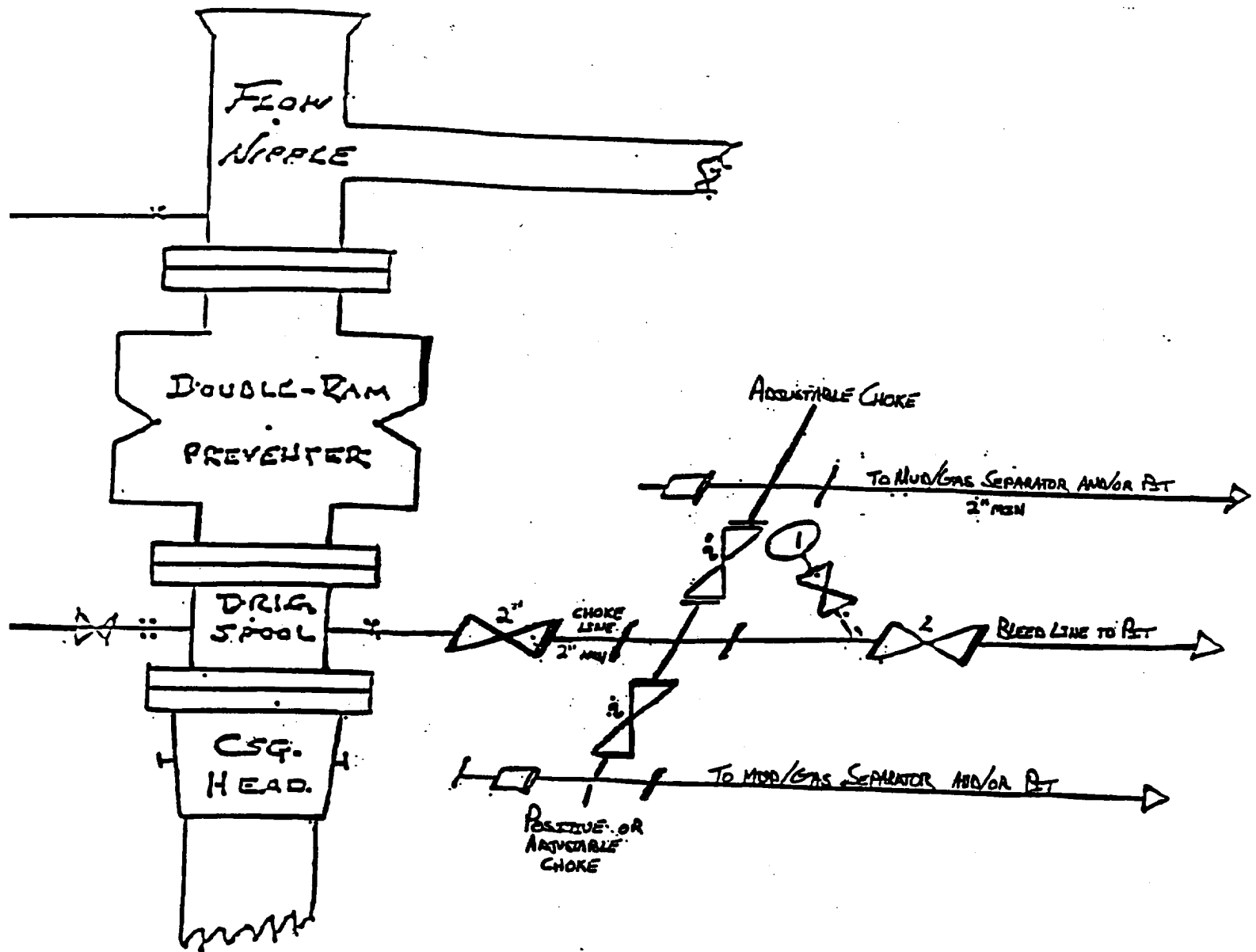
Bottom Hole Location If Different From Surface

UL or lot No.	Section	Township	Range	Lot Idn	Feet from the	North/South line	Feet from the	East/West line	County
Dedicated Acres	Joint or Infill	Consolidation Code	Order No.						
40									

NO ALLOWABLE WILL BE ASSIGNED TO THIS COMPLETION UNTIL ALL INTERESTS HAVE BEEN CONSOLIDATED
OR A NON-STANDARD UNIT HAS BEEN APPROVED BY THE DIVISION

	OPERATOR CERTIFICATION I hereby certify the the information contained herein is true and complete to the best of my knowledge and belief. Signature DIANA J. CANNON Printed Name PRODUCTION ANALYST Title AUGUST 10, 2001 Date
	SURVEYOR CERTIFICATION I hereby certify that the well location shown on this plat was plotted from field notes of actual surveys made by me or under my supervision, and that the same is true and correct to the best of my belief. JULY 11, 2001 Date Surveyed AWB Signature & Seal of Professional Surveyor 01.11.0822 Certificate No. RONALD J. EIDSON 3239 GARY EIDSON 12841

BLOW OUT PREVENTER AND CHOKE MANIFOLD



10"/900 Cameron SS Space Saver
3000# Working Pressure
3000# Working Pressure Choke Manifold