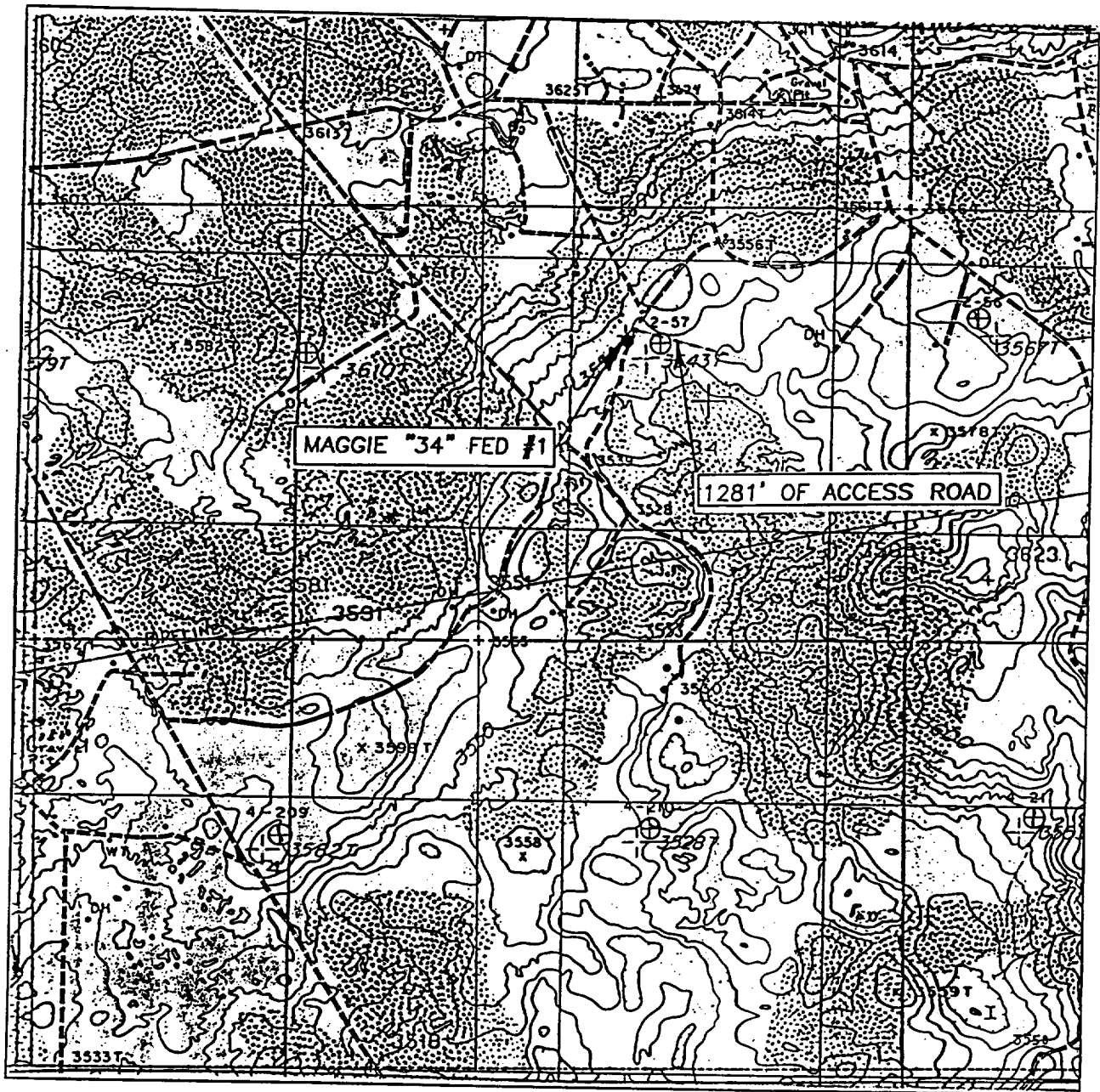


LOCATION VERIFICATION MAP



SCALE: 1" = 2000'

CONTOUR INTERVAL: 10'
LOCO HILLS, N.M.

SEC. 34 TWP. 17-S RGE. 30-E

SURVEY N.M.P.M.

COUNTY EDDY

DESCRIPTION 1650' FNL & 1780' FWL

ELEVATION 3552'

OPERATOR ANADARKO PETROLEUM CORP.

LEASE MAGGIE "34" FEDERAL

U.S.G.S. TOPOGRAPHIC MAP
LOCO HILLS, N.M.

JOHN WEST SURVEYING
HOBBS, NEW MEXICO
(505) 393-3117

RECEIVED
2002 MAR 26 PM 3:16
FBI - NEW YORK