

## DISTRICT I

P.O. Box 1980, Hobbs, NM 88241-1980

## State of New Mexico

Energy, Minerals and Natural Resources Department

Form C-102

Revised February 10, 1994

Submit to Appropriate District Office

State Lease - 4 Copies

Fee Lease - 3 Copies

## DISTRICT II

P.O. Drawer DD, Artesia, NM 88211-0719

## OIL CONSERVATION DIVISION

P.O. Box 2088

Santa Fe, New Mexico 87504-2088

## DISTRICT III

1000 Rio Brazos Rd., Artec, NM 87410

## DISTRICT IV

P.O. BOX 2088, SANTA FE, N.M. 87504-2088

## WELL LOCATION AND ACREAGE DEDICATION PLAT

☐ AMENDED REPORT

API Number <b>30-015-</b>	Pool Code <b>96831</b>	Pool Name <b>CEDAR LAKE, YESO</b>
Property Code <b>020767</b>	Property Name <b>JACKSON A</b>	
OGRID No. <b>003080</b>	Operator Name <b>BURNETT OIL COMPANY</b>	
	Well Number <b>24</b>	Elevation <b>3738'</b>

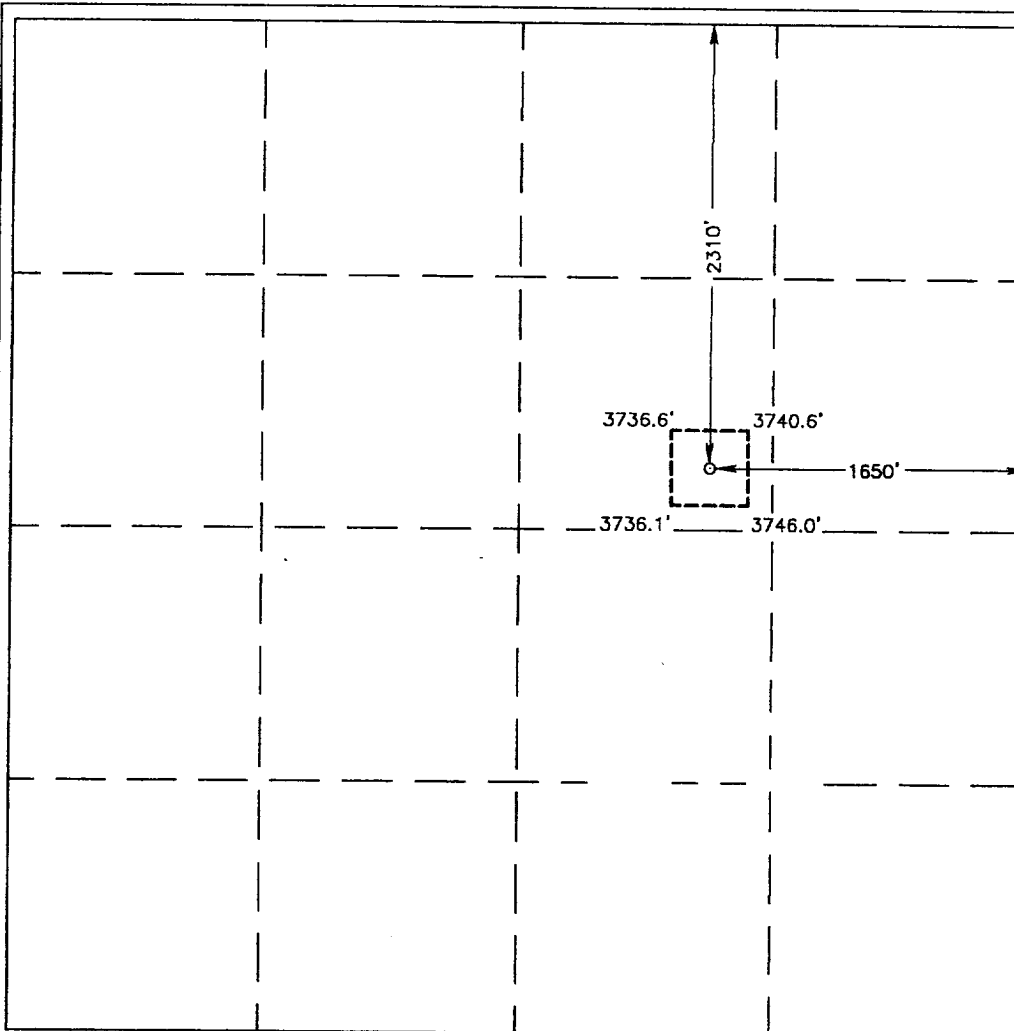
## Surface Location

UL or lot No.	Section	Township	Range	Lot Idn	Feet from the	North/South line	Feet from the	East/West line	County
G	13	17-S	30-E		2310	NORTH	1650	EAST	EDDY

## Bottom Hole Location If Different From Surface

UL or lot No.	Section	Township	Range	Lot Idn	Feet from the	North/South line	Feet from the	East/West line	County
Dedicated Acres		Joint or Infill		Consolidation Code		Order No.			

NO ALLOWABLE WILL BE ASSIGNED TO THIS COMPLETION UNTIL ALL INTERESTS HAVE BEEN CONSOLIDATED  
OR A NON-STANDARD UNIT HAS BEEN APPROVED BY THE DIVISION



## OPERATOR CERTIFICATION

I hereby certify that the information contained herein is true and complete to the best of my knowledge and belief.

*Sterling Randolph*  
Signature

STERLING RANDOLPH  
Printed Name

PETROLEUM ENGINEER  
Title

**AUG-05-31, 2001**  
Date

## SURVEYOR CERTIFICATION

I hereby certify that the well location shown on this plat was plotted from field notes of actual surveys made by me or under my supervision and that the same is true and correct to the best of my belief.

JULY 10, 2001

Date Surveyed \_\_\_\_\_ AWB

Signature of \_\_\_\_\_  
Professional Surveyor

*Ronald J. Edson*  
01.11.0832

Certificate No. **RONALD J. EDSON 3239**  
**GARY EDSON 12641**