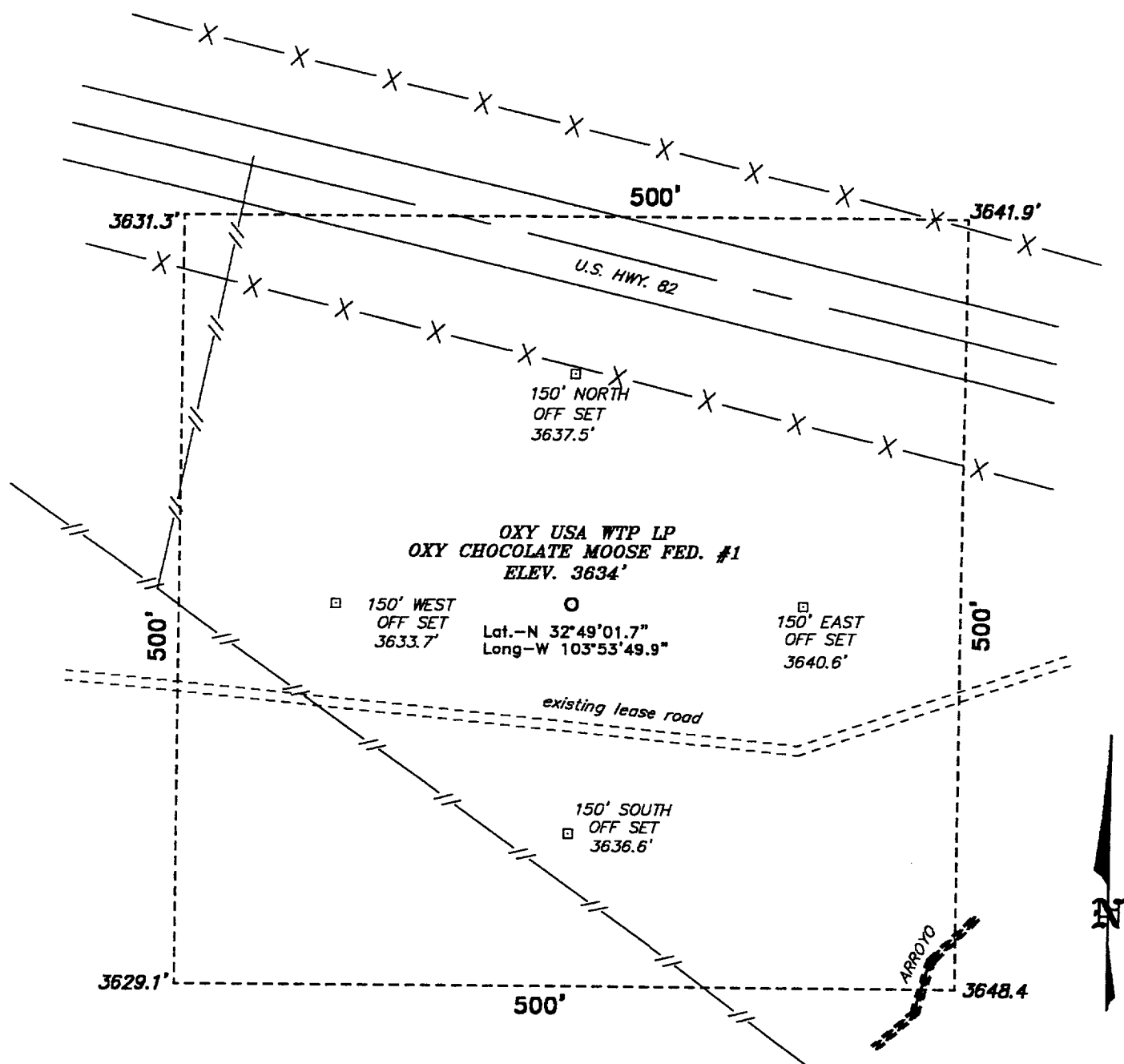


**SECTION 20, TOWNSHIP 17 SOUTH, RANGE 31 EAST, N.M.P.M.,  
EDDY COUNTY, NEW MEXICO.**



**Directions to Location:**

OM U.S. HWY 82 GO EAST 0.1 MILES TO A LEASE  
ROAD THEN SOUTH ON LEASE ROAD THEN WEST 200'  
TO LOCATION.



SCALE: 1" = 100'

**BASIN SURVEYS** P.O. BOX 1786 - HOBBS, NEW MEXICO

W.O. Number: 1876

Drawn By: **JAMES PRESLEY**

Date: 09/12/01

Disk: JLP #1 - 1876A.DWG

**OXY USA WTP LP**

REF: Chocolate Moose Fed. #1 / Well Pad Topo

THE CHOCOLATE MOOSE FED. No. 1 LOCATED 1600' FROM  
THE SOUTH LINE AND 990' FROM THE WEST LINE OF  
SECTION 20, TOWNSHIP 17 SOUTH, RANGE 31 EAST,  
N.M.P.M., EDDY COUNTY, NEW MEXICO.

Survey Date: 09/10/01

Sheet 1 of 1 Sheets