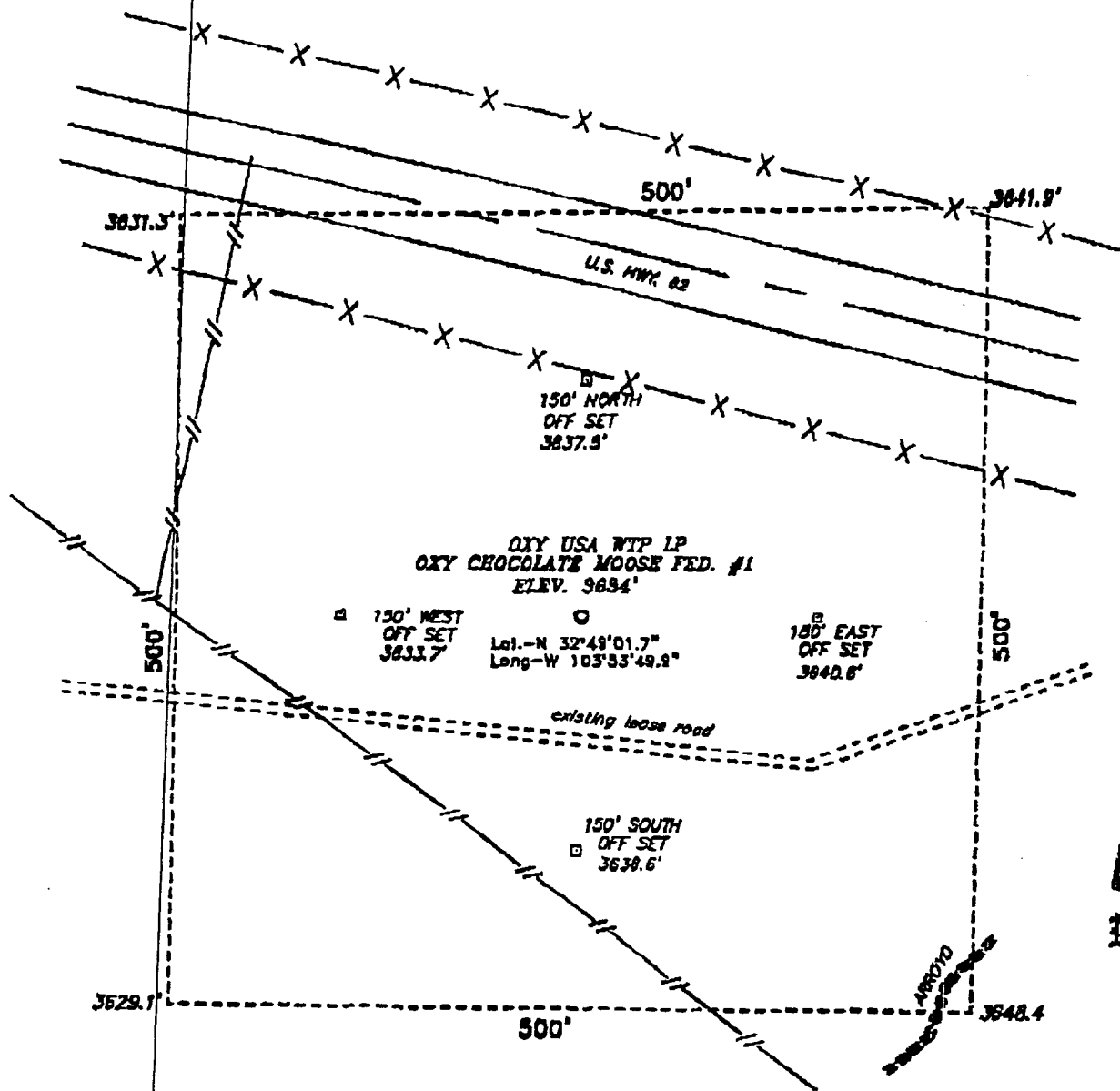
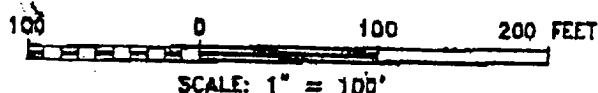


SECTION 20, TOWNSHIP 17 SOUTH, RANGE 31 EAST, N.M.P.M.,
EDDY COUNTY, NEW MEXICO.



Directions to Location:

ON U.S. HWY 82 GO EAST 0.1 MILES TO A LEASE ROAD THEN SOUTH ON LEASE ROAD THEN WEST 200' TO LOCATION.



OXY USA WTP LP

REF: Chocolate Moose Fed. #1 / Well Pad Tops

THE CHOCOLATE MOOSE FED. No. 1 LOCATED 1600' FROM THE SOUTH LINE AND .990' FROM THE WEST LINE OF SECTION 20, TOWNSHIP 17 SOUTH, RANGE 31 EAST. N.M.P.M., EDDY COUNTY, NEW MEXICO.

BASIN SURVEYS P.O. BOX 1786 - HOBBS, NEW MEXICO

W.O. Number: 1876

Drawn By: JAMES PRESLEY

Date: 09/12/01

Disk: JLP #1 - 1876A.DWG

Survey Date: 08/10/01

Sheet 1 of 1 Sheets