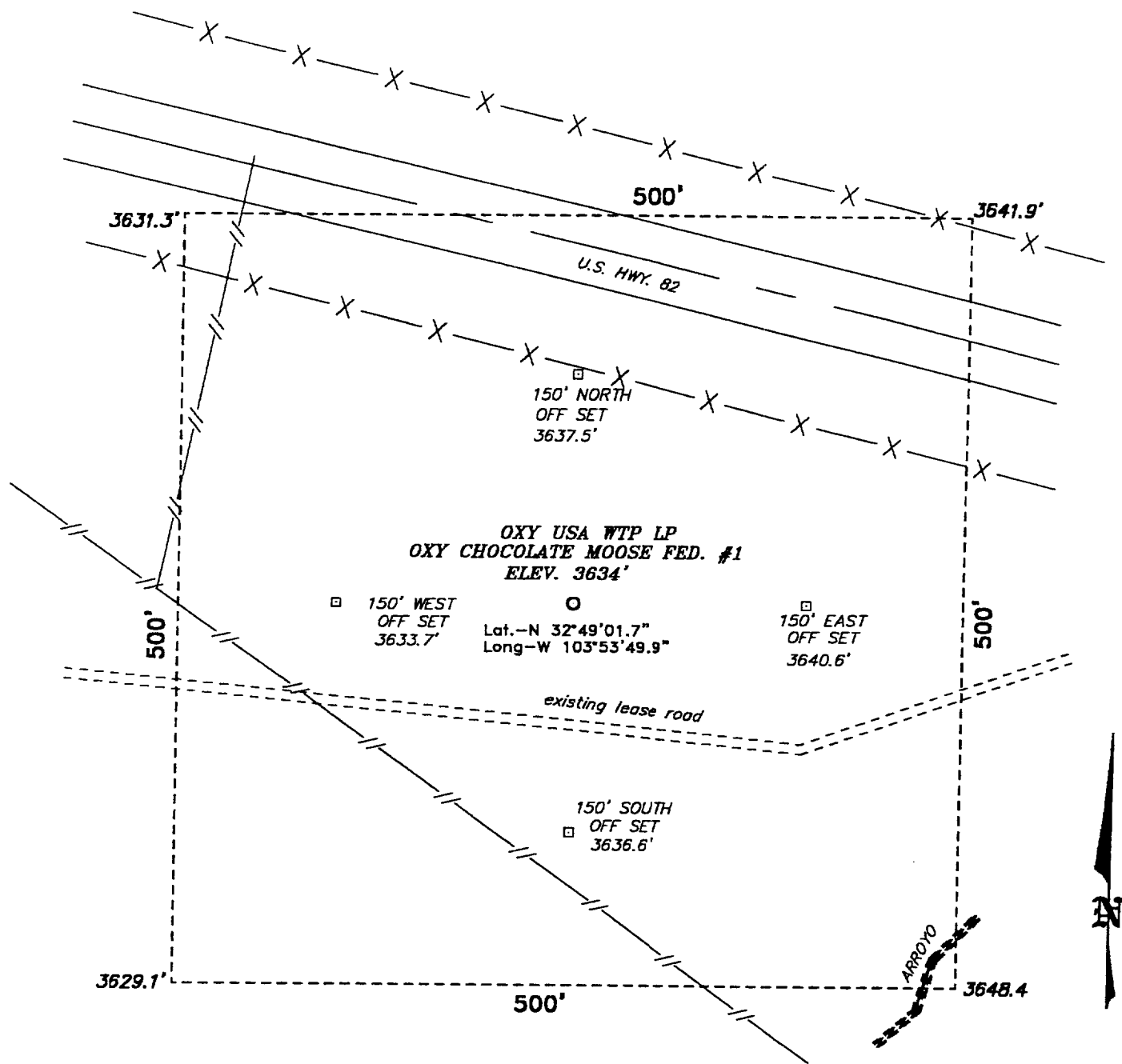
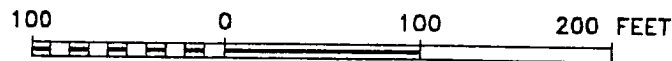


SECTION 20, TOWNSHIP 17 SOUTH, RANGE 31 EAST, N.M.P.M.,
EDDY COUNTY, NEW MEXICO.



Directions to Location:

OM U.S. HWY 82 GO EAST 0.1 MILES TO A LEASE
ROAD THEN SOUTH ON LEASE ROAD THEN WEST 200'
TO LOCATION.



SCALE: 1" = 100'

BASIN SURVEYS P.O. BOX 1786-HOBBS, NEW MEXICO

W.O. Number: 1876

Drawn By: JAMES PRESLEY

Date: 09/12/01

Disk: JLP #1 - 1876A.DWG

OXY USA WTP LP

REF: Chocolate Moose Fed. #1 / Well Pad Topo

THE CHOCOLATE MOOSE FED. No. 1 LOCATED 1600' FROM
THE SOUTH LINE AND 990' FROM THE WEST LINE OF
SECTION 20, TOWNSHIP 17 SOUTH, RANGE 31 EAST,
N.M.P.M., EDDY COUNTY, NEW MEXICO.

Survey Date: 09/10/01

Sheet 1 of 1 Sheets