



marbob
energy corporation

September 26, 2002

Oil Conservation Division
811 South First Street
Artesia, New Mexico 88210

Attention: Mr. Tim Gum

30-015-32443
UT D

RE: Unorthodox Well Location

Dear Mr. Gum:

Marbob Energy Corporation respectfully requests an administrative approval of the following unorthodox location pursuant to Order No. R-7900-B:

Burch Keely Unit #802 #330
1190 feet from the North line
330 feet from the west line
Section 23, T-17S, R-29E
Eddy County, New Mexico

This well may be completed in the upper 500 feet of the Yeso, the Grayburg, the San Andres, and or the Seven Rivers Formation in the Grayburg Jackson Pool.

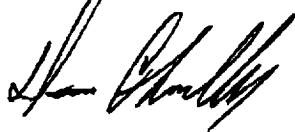
Attached to the applications are the following Exhibits:

- A. Oil Conservation Division Form C-102 with proration unit outlined (Exhibit A).
- B. A plat which shows all other wells within the quarter-quarter section and Burch Keely boundary (Exhibit B).

Well number 892 will be 330 feet from the closest unit boundary and 130 feet from the interior quarter quarter line.

If this unorthodox location meets with your approval, please sign below and return to our office. Thank you for your help.

Sincerely,

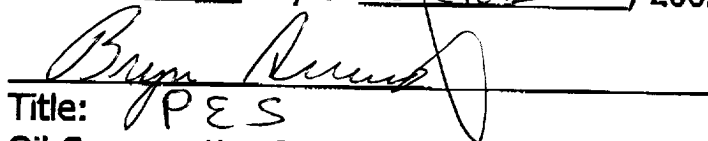


Dean Chumbley
Land Department

DC/mm
Attachments

Approved this 15 day of October, 2002.

By:



Title:

PES
Oil Conservation Division
Artesia Office

DISTRICT I

P.O. Box 1000, Santa Fe, NM 87504-1000

DISTRICT II

P.O. Box 1000, Santa Fe, NM 87504-1000

DISTRICT III

1000 Rio Grande Rd., Santa Fe, NM 87504

DISTRICT IV

P.O. Box 2000, Santa Fe, NM 87504-2000

State of New Mexico

Energy, Minerals and Natural Resources Department

Form C-102

Revised February 10, 1994

Submit to Appropriate District Office

State Lease - 4 Copies

Fee Lease - 3 Copies

OIL CONSERVATION DIVISION

P.O. Box 2088

Santa Fe, New Mexico 87504-2088

WELL LOCATION AND ACREAGE DEDICATION PLAT

☐ AMENDED REPORT

API Number 30-015-	Pool Code 28509	Pool Name GRBG JACKSON SR Q GRBG SA
Property Code 6497	Property Name BURCH KEELY UNIT	Well Number 892
OCRD No. 14049	Operator Name MARBOB ENERGY CORPORATION	Elevation 3594'

Surface Location

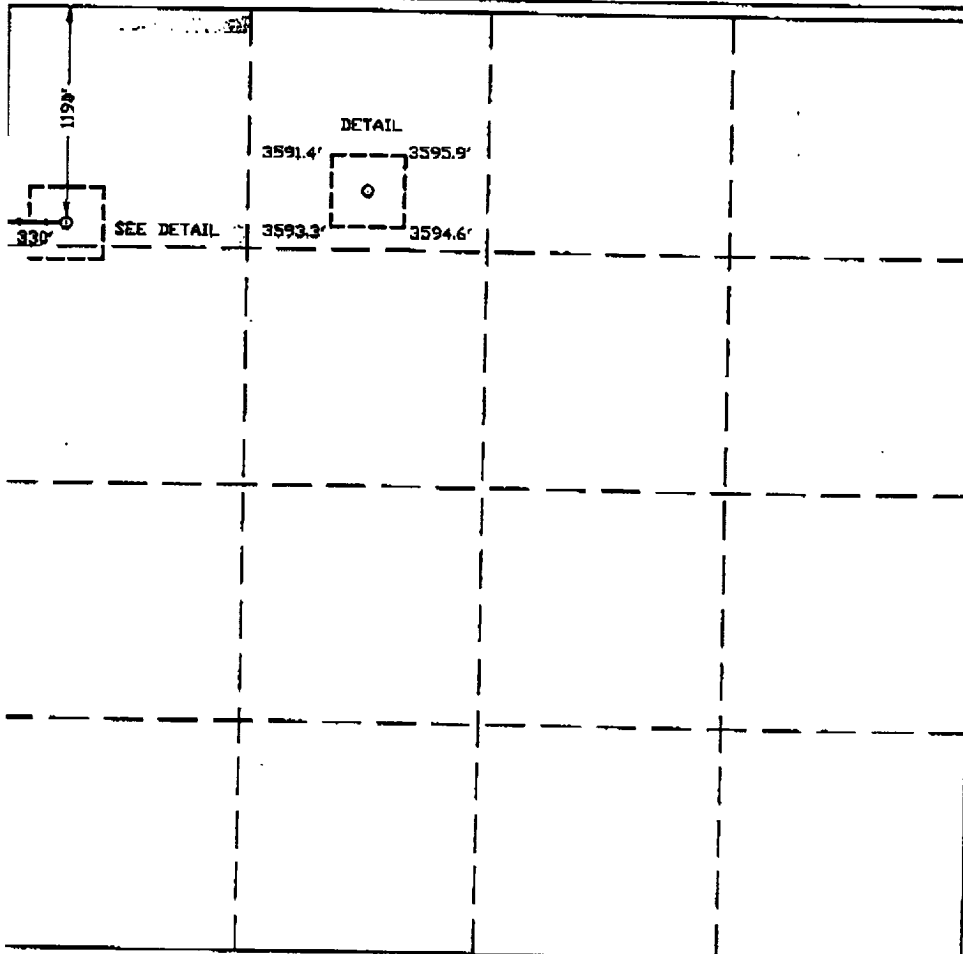
UL or lot No.	Section	Township	Range	Lot Idn	Feet from the	North/South line	Feet from the	East/West line	County
D	23	17-S	29-E		1190	NORTH	330	WEST	EDDY

Bottom Hole Location If Different From Surface

UL or lot No.	Section	Township	Range	Lot Idn	Feet from the	North/South line	Feet from the	East/West line	County

Dedicated Acres	Joint or Infill	Consolidation Code	Order No.
40			

NO ALLOWABLE WILL BE ASSIGNED TO THIS COMPLETION UNTIL ALL INTERESTS HAVE BEEN CONSOLIDATED
OR A NON-STANDARD UNIT HAS BEEN APPROVED BY THE DIVISION



OPERATOR CERTIFICATION

I hereby certify the information contained herein is true and complete to the best of my knowledge and belief.

Diana J. Cannon
Signature

DIANA J. CANNON
Printed Name

PRODUCTION ANALYST
Title

AUGUST 29, 2002
Date

SURVEYOR CERTIFICATION

I hereby certify that the well location shown on this plat was plotted from field notes of actual surveys made by me or under my supervision, and that the same is true and correct to the best of my belief.

AUGUST 22, 2002
Date Surveyed

Ronald J. Cannon
Signature & Seal of Professional Surveyor
NEW MEXICO
8/23/02

Certification No. RONALD J. CANNON 3239
12541

