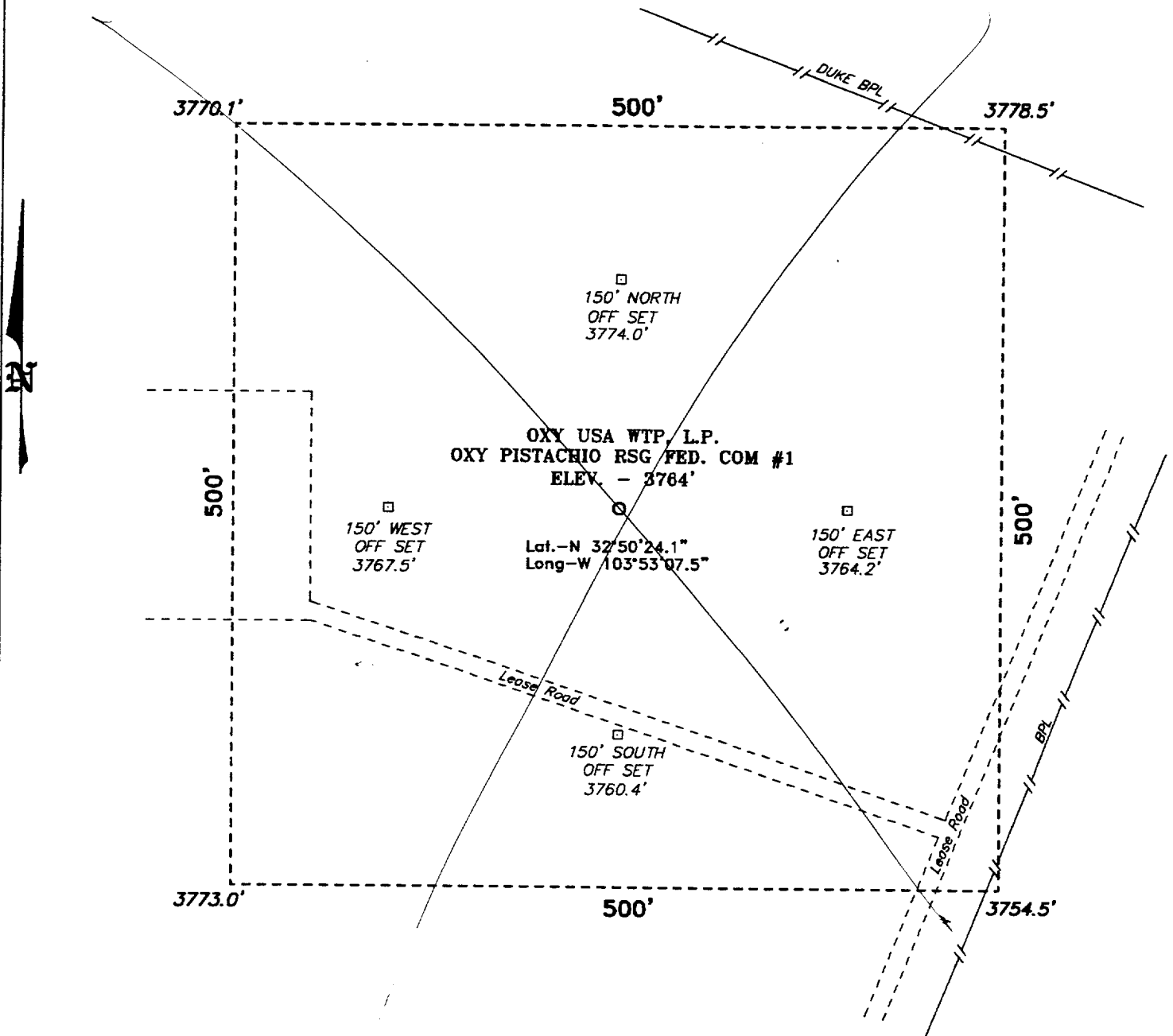


**SECTION 17, TOWNSHIP 17 SOUTH, RANGE 31 EAST, N.M.P.M.,
EDDY COUNTY, NEW MEXICO.**



Directions to Location:

FROM THE JUNCTION OF US HWY 82 AND STATE HWY 31, GO WEST ON HWY 82 FOR APPROX. 0.5 MILE TO A LEASE ROAD; THENCE NORTH ON LEASE ROAD FOR APPROX. 0.6 MILE TO LEASE ROAD; THENCE LEFT ON LEASE ROAD AND CONTINUE NORTHERLY FOR APPROX. 0.4 MILE; THENCE RIGHT ON LEASE ROAD TO A "Y" AND STAY RIGHT, AND CONTINUE NORTHWESTERLY FOR APPROX. 0.7 MILE TO A POINT ON THE EAST HALF OF THE PROPOSED LOCATION.

BASIN SURVEYS P.O. BOX 1786 - HOBBS, NEW MEXICO

W.O. Number: 2847

Drawn By: K. GOAD

Date: 11-25-2002

Disk: KJG CD#5 - 2847A.DWG

Survey Date: 11-22-2002

Sheet 1 of 1 Sheets

100 0 100 200 FEET
SCALE: 1" = 100'

OXY USA WTP, L.P.

REF: OXY PISTACHIO RSG FED. COM #1 / Well Pad Topo

THE OXY PISTACHIO RSG FED. COM No. 1 LOCATED 660'
FROM THE NORTH LINE AND 660' FROM THE EAST LINE OF
SECTION 17, TOWNSHIP 17 SOUTH, RANGE 31 EAST,
N.M.P.M., EDDY COUNTY, NEW MEXICO.