

NEW MEXICO OIL CONSERVATION COMMISSION
Santa Fe, New Mexico

(Form C-104)
(Revised 7/1/52)

REQUEST FOR (OIL) - (GAS) ALLOWABLE

New Well
Recompletion

This form shall be submitted by the operator before an initial allowable will be assigned to any completed Oil or Gas well. Form C-104 is to be submitted in QUADRUPLICATE to the same District Office to which Form C-101 was sent. The allowable will be assigned effective 7:00 A.M. on date of completion or recompletion, provided this form is filed during calendar month of completion or recompletion. The completion date shall be that date in the case of an oil well when oil is delivered into the stock tanks. Gas must be reported on 15.025 psia at 60° Fahrenheit.

Kermit, Texas

Sept. 7, 1956

(Place)

(Date)

WE ARE HEREBY REQUESTING AN ALLOWABLE FOR A WELL KNOWN AS:

Magnolia Petroleum Company

D. E. Fanning

Well No. 1, in NW 1/4, SE 1/4,

(Company or Operator)

(Lease)

JV

11

18S

26E

NMPM,

Undesignated

Pool

(Unit)

Eddy

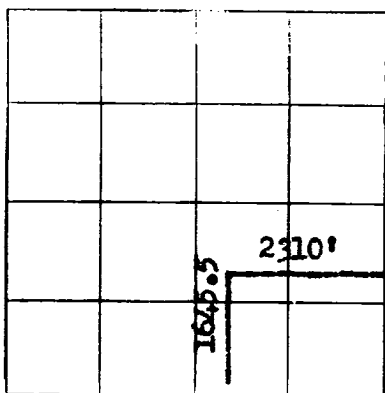
County. Date Spudded

8-17-56

Date Completed

9-6-56

Please indicate location:



Elevation 3316 GL Total Depth 1797, P.B. 1788

Top oil/gas pay 1654 Name of Prod. Form San Andres

Casing Perforations: 1654 - 1672' or

Depth to Casing shoe of Prod. String 1797

Natural Prod. Test Swabbed dry BOPD

based on bbls. Oil in Hrs. Mins.

Test after acid or shot Sand frac w/10,000 gals. 79 BOPD

Based on 46.2 bbls. Oil in 14 Hrs. Mins.

Gas Well Potential

Size choke in inches 13/64

Date first oil run to tanks or gas to Transmission system: 9-5-56

Transporter taking Oil or Gas: McWood Corp.

Casing and Cementing Record

Size Feet Sax

8 5/8	1225	700
5 1/2	1797	350

Remarks: Gravity 37.8° at 60° F GOR 584:1

I hereby certify that the information given above is true and complete to the best of my knowledge.

Approved: 19

Magnolia Petroleum Company

(Company or Operator)

By:

E. L. Kintersbauer

(Signature)

By: M. L. Armstrong

Title

Petroleum Engineer

Send Communications regarding well to:

Title

Name: V. M. Leonard