

NEW MEXICO OIL CONSERVATION COMMISSION  
Santa Fe, New Mexico

RECEIVED  
Form C-101  
Revised (12/1/55)  
FEB 23 1960

NOTICE OF INTENTION TO DRILL O. C. C.

Notice must be given to the District Office of the Oil Conservation Commission and approval obtained before drilling or recompletion begins. If changes in the proposed plan are considered advisable, a copy of this notice showing such changes will be returned to the sender. Submit this notice in QUINTUPPLICATE. One copy will be returned following approval. See additional instructions in Rules and Regulations of the Commission. If State Land submit 6 Copies Attach Form C- 128 in triplicate to first 3 copies of form C-101

ARTESIA, OFFICE

Artesia, New Mexico  
(Place)

February 23, 1960  
(Date)

OIL CONSERVATION COMMISSION  
SANTA FE, NEW MEXICO

Gentlemen:

You are hereby notified that it is our intention to commence the Drilling of a well to be known as

National Drilling Co., Inc.

(Company or Operator)

Lease

(Lease)

Well No. 8, in H The well is

(Unit)

located 160 feet from the North line and 680 feet from the

line of Section 14, T. 12S, R. 1E, NMPM.

(GIVE LOCATION FROM SECTION LINE)

Pool, McCoy County

If State Land the Oil and Gas Lease is No.

If patented land the owner is Donald Manning

Address Artesia, New Mexico

We propose to drill well with drilling equipment as follows: Rotary Bit

The status of plugging bond is \$10,000. Plugging bond

Drilling Contractor National Drilling Co., Inc.

P.O. Box 144

Artesia, New Mexico

We intend to complete this well in the San Andres

formation at an approximate depth of 1750 feet.

CASING PROGRAM

We propose to use the following strings of Casing and to cement them as indicated:

Size of Hole	Size of Casing	Weight per Foot	New or Second Hand	Depth	Sacks Cement
15 1/2	10 1/2	54	used	0	added
8 3/4	7	20#	new	1000	Necessary to circulate to surface
6 1/2	4 1/2	9.5	new	1750	Necessary to circulate to surface.

If changes in the above plans become advisable we will notify you immediately.

ADDITIONAL INFORMATION (If recompletion give full details of proposed plan of work.)

Approved FEB 23 1960, 19.....  
Except as follows:

Sincerely yours,

National Drilling Co., Inc.

(Company or Operator)

By

Position Secretary

Send Communications regarding well to

Name Perry Diversa, Inc.

Address P.O. Box 706, Artesia, New Mexico

OIL CONSERVATION COMMISSION

By

M. L. Armstrong  
OIL AND GAS INSPECTOR

30-015-00199  
RECEIVEDNEW MEXICO OIL CONSERVATION COMMISSION  
WELL LOCATION AND ACREAGE DEDICATION PLATFORM C-128  
Revised 5/1/57

FEB 23 1960

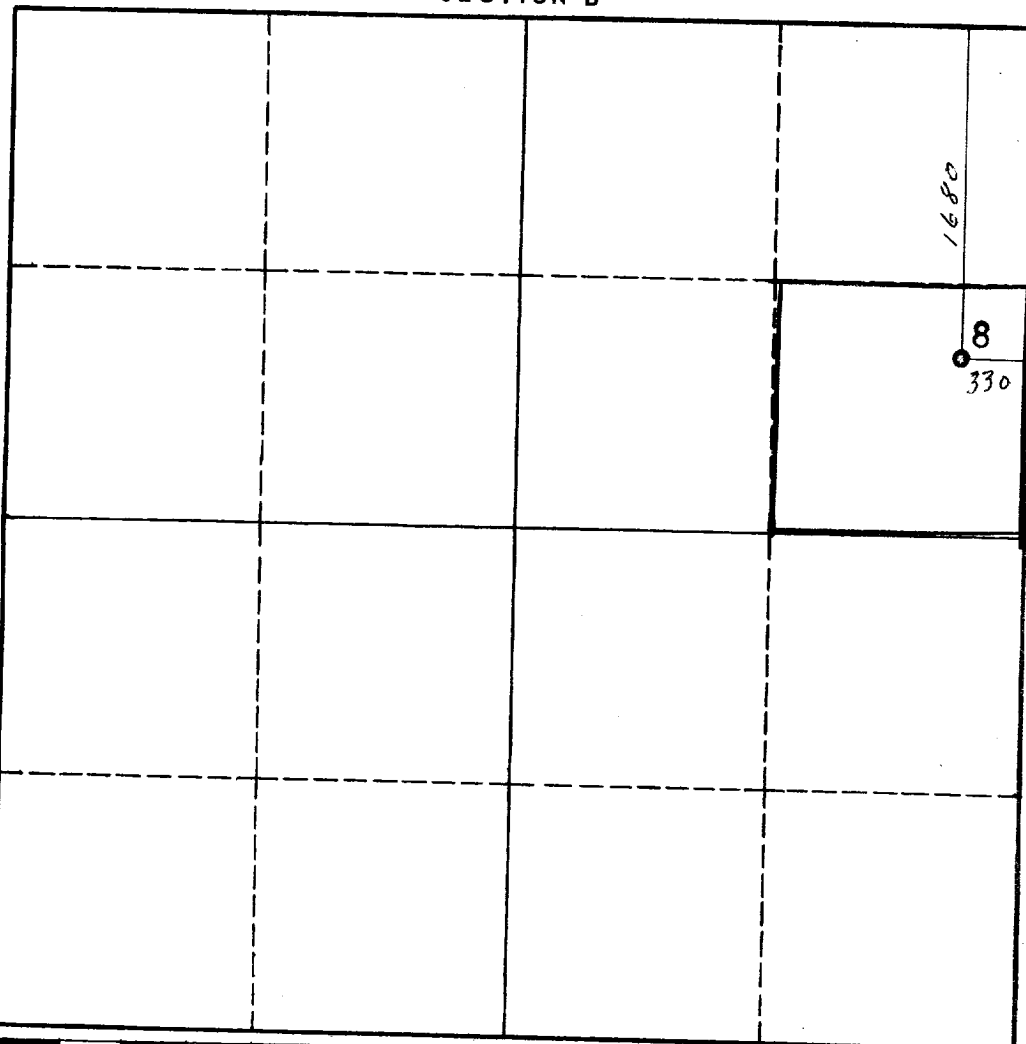
SEE INSTRUCTIONS FOR COMPLETING THIS FORM ON THE REVERSE SIDE **O. C. C.**

SECTION A				ARTESIA, OFFICE	
Operator <b>National Drilling Co.,</b>		Lease <b>Leavitt</b>		Well No. <b>8</b>	
Unit Letter	Section <b>14</b>	Township <b>18 South</b>	Range <b>26 East</b>	County <b>Eddy</b>	
Actual Footage Location of Well: <b>1680</b> feet from the <b>North</b> line and <b>330</b> feet from the <b>East</b> line					
Ground Level Elev.	Producing Formation		Pool	Dedicated Acreage: Acres	

1. Is the Operator the only owner in the dedicated acreage outlined on the plat below? YES ☒ NO ☐ . ("Owner" means the person who has the right to drill into and to produce from any pool and to appropriate the production either for himself or for himself and another. (65-3-29 (e) NMSA 1935 Comp.)
2. If the answer to question one is "no," have the interests of all the owners been consolidated by communitization agreement or otherwise? YES ☐ NO ☐ . If answer is "yes," Type of Consolidation \_\_\_\_\_
3. If the answer to question two is "no," list all the owners and their respective interests below:

Owner	Land Description

## SECTION B



## CERTIFICATION

I hereby certify that the information in SECTION A above is true and complete to the best of my knowledge and belief.

Name

Position

**Secretary**  
**National Drilling Co., Inc.**  
CompanyDate **February 23, 1960**

I hereby certify that the well location shown on the plat in SECTION B was plotted from field notes of actual surveys made by me or under my supervision, and that the same is true and correct to the best of my knowledge and belief.

Date Surveyed

**Feb., 22, 1960**Registered Professional Engineer  
and/or Land Surveyor*John A. Mathis Jr.*

Certificate No.

**1502**

0 330 660 990 1320 1650 1980 2310 2640 2000 1500 1000 500 0

# INSTRUCTIONS FOR COMPLETION OF FORM C-128

1. Operator shall furnish and certify to the information called for in Section A.
2. Operator shall outline the dedicated acreage for *both* oil and gas wells on the plat in Section B.
3. A registered professional engineer or land surveyor registered in the State of New Mexico or approved by the Commission shall show on the plat the location of the well and certify this information in the space provided.
4. All distances shown on the plat must be from the outer boundaries of the Section.
5. If additional space is needed for listing owners and their respective interests as required in question 3 of Section A, please use space below.

OIL CONSERVATION COMMISSION		
ARTESIA DISTRICT OFFICE		
Plat C-128 Required <span style="float: right;">7</span>		
DISTRIBUTION		
	NO.	
	COPIES	
OPERATOR	2	
SANTA FE	1	
PROBATION OFFICE	1	
STATE LAND OFFICE	1	
U. S. G. S.	2	
TRANSPORTER	1	/
FILE	1	
BUREAU OF MINES		