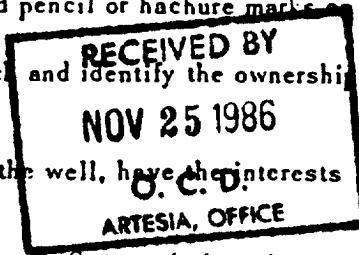


All distances must be from the outer boundaries of the Section.

Operator Marathon Oil Company			Lease Ralph Nix			Well No. 1		
Unit Letter J	Section 29	Township 18-S	Range 26-E	County Eddy				
Actual Footage Location of Well: 1980 feet from the South line and 1980 feet from the East line								
Ground Level Elev. 3416	Producing Formation Wolfcamp		Pool Atoka Wolfcamp			Dedicated Acreage 320 Acres		

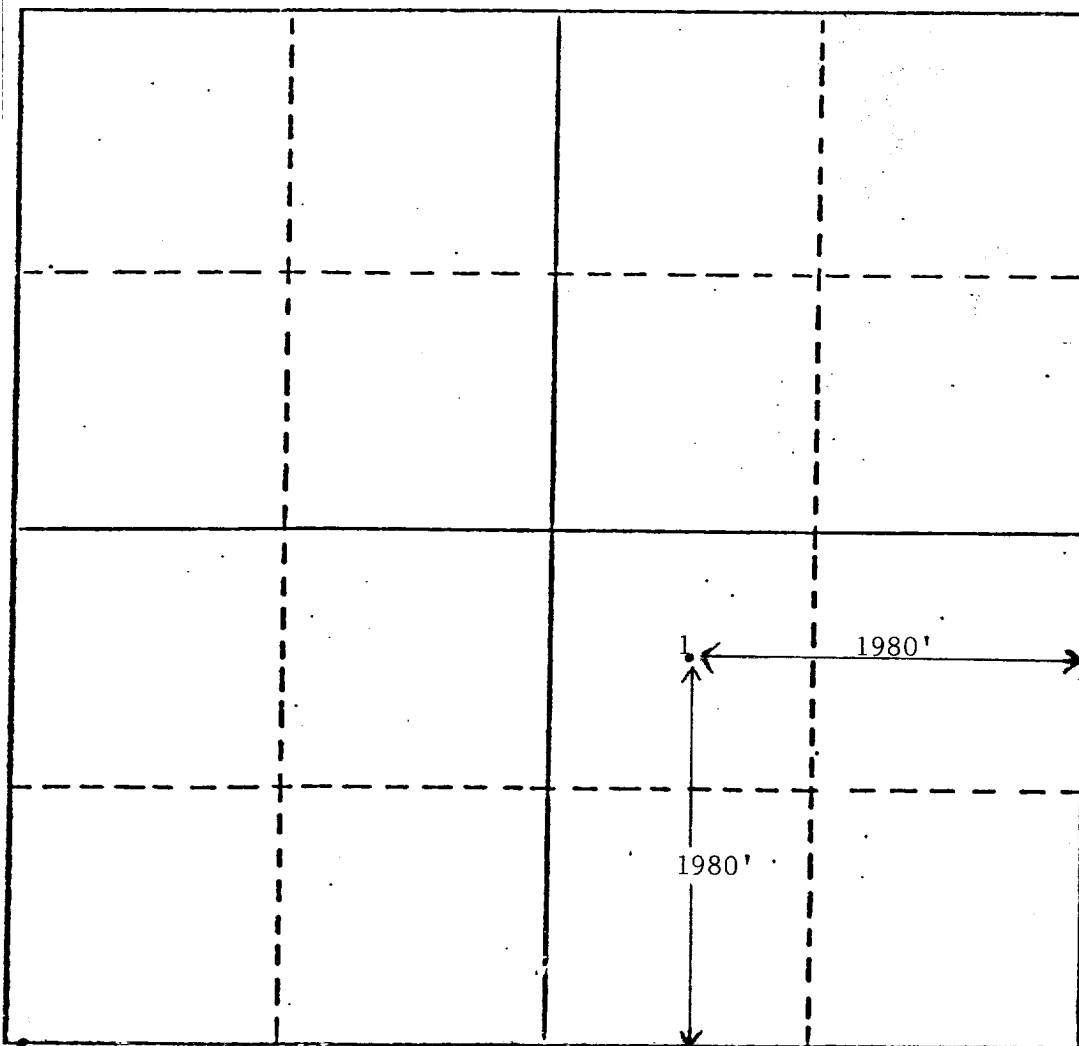
1. Outline the acreage dedicated to the subject well by colored pencil or hachure marks on the plat below.
2. If more than one lease is dedicated to the well, outline each and identify the ownership thereof (both as to working interest and royalty).
3. If more than one lease of different ownership is dedicated to the well, have the interests of all owners been consolidated by communitization, unitization, force-pooling, etc?



☒ Yes ☐ No If answer is "yes," type of consolidation Communitization

If answer is "no," list the owners and tract descriptions which have actually been consolidated. (Use reverse side of this form if necessary.)

No allowable will be assigned to the well until all interests have been consolidated (by communitization, unitization, forced-pooling, or otherwise) or until a non-standard unit, eliminating such interests, has been approved by the Division.



CERTIFICATION

I hereby certify that the information contained herein is true and complete to the best of my knowledge and belief.

Thomas F. Zapatka

Name
Thomas F. Zapatka

Position
Prod. Engineer

Company
Marathon Oil Company

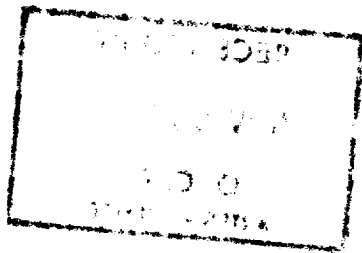
Date
November 21, 1986

I hereby certify that the well location shown on this plat was plotted from field notes of actual surveys made by me or under my supervision, and that the same is true and correct to the best of my knowledge and belief.

Date Surveyed

Registered Professional Engineer and/or Land Surveyor

Certificate No.



←