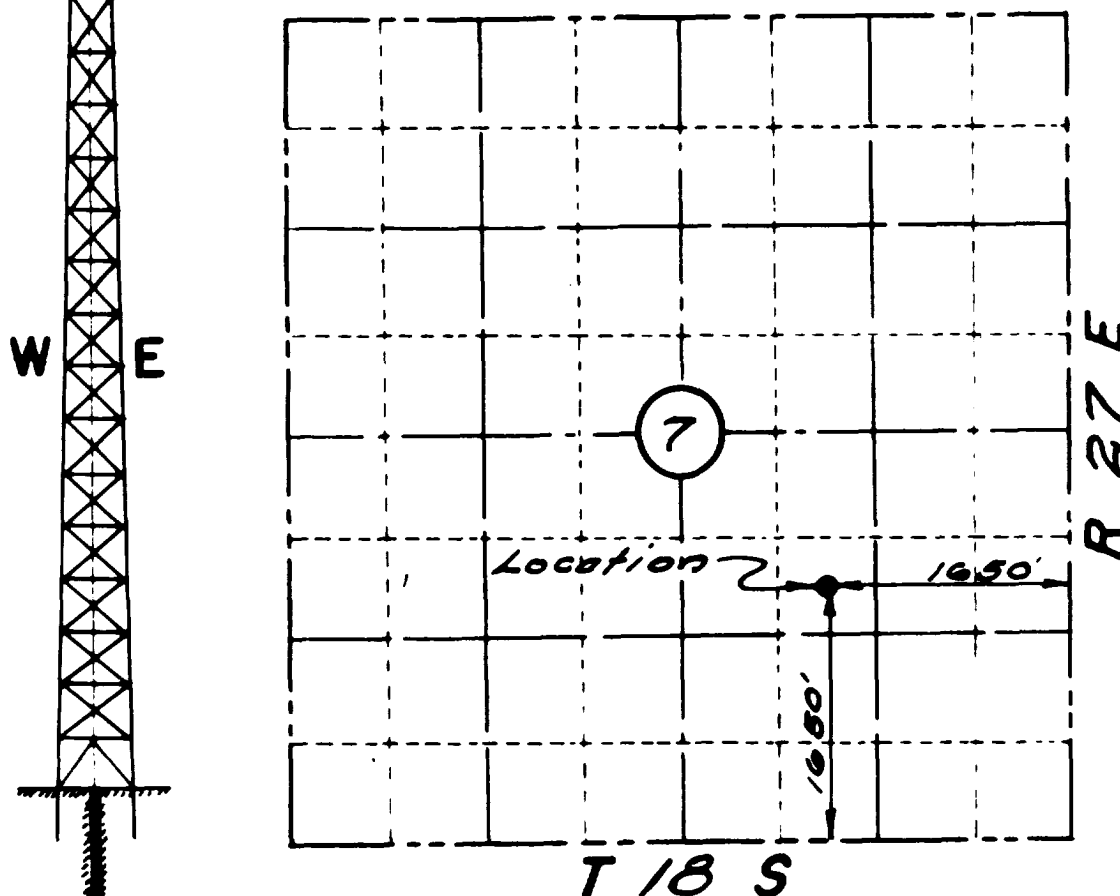


LOCATION FOR

WEIER DRILLING COMPANY
KAISER NO. "3"

1650 FEET FROM NORTH LINE
1650 FEET FROM SOUTH LINE
1650 FEET FROM EAST LINE
FEET FROM WEST LINE

SE 1/4 - NW 1/4 - SE 1/4 - T 18 S - R 27 E



CERTIFICATE

I, Clarence E. Fischbeck, Registered Professional Engineer of the State of New Mexico, hereby certify that I made the location as platted and that said plat is a true & correct representation of the field notes of the actual survey & is true and correct to the best of my knowledge & belief.

Clarence E. Fischbeck
Clarence E. Fischbeck — Consulting Engineer
Artesia, New Mexico.