

NEW EXICO OIL CONSERVATION COM. SSION
Santa Fe, New Mexico

RECEIVED
Form C-101
Revised (12/1/55)
JUN 27 1960

NOTICE OF INTENTION TO DRILL

O. C. C.
ARTESIA, OFFICE

Notice must be given to the District Office of the Oil Conservation Commission and approval obtained before drilling or recompletion begins. If changes in the proposed plan are considered advisable, a copy of this notice showing such changes will be returned to the sender. Submit this notice in QUINTUPLICATE. One copy will be returned following approval. See additional instructions in Rules and Regulations of the Commission. If State Land submit 6 Copies Attach Form C- 128 in triplicate to first 3 copies of form C-101

Midland, Texas
(Place)

June 23, 1960
(Date)

OIL CONSERVATION COMMISSION
SANTA FE, NEW MEXICO

30-015-00903

Gentlemen:

You are hereby notified that it is our intention to commence the Drilling of a well to be known as

Humble Oil & Refining Company

Hondo Oil & Gas Co. Lease

(Company or Operator)

Abo-Chalk Bluff Draw Unit
(Lease)

Well No. 14

"F"
(Unit)

The well is

located 1650' feet from the North line and 1650' feet from the West line of Section 16, T.-18-S, R-27-E, NMPM.

(GIVE LOCATION FROM SECTION LINE)

Empire Abo

Pool,

Eddy

County

If State Land the Oil and Gas Lease is No. B-10456 - Hondo Oil & Gas Co. Lease.

If patented land the owner is

Address

We propose to drill well with drilling equipment as follows: Rotary

The status of plugging bond is On file in commission office

Drilling Contractor Lee Drilling Company

We intend to complete this well in the Abo

formation at an approximate depth of 6100' feet.

CASING PROGRAM

We propose to use the following strings of Casing and to cement them as indicated:

Size of Hole	Size of Casing	Weight per Foot	New or Second Hand	Depth	Sacks Cement
11"	8-5/8"	24#	New	1500'	150*
7-7/8"	4-1/2"	9.50#	New	6100'	200**

If changes in the above plans become advisable we will notify you immediately.

ADDITIONAL INFORMATION (If recompletion give full details of proposed plan of work.)

*Circulate cement to surface

**Circulate cement to 8-5/8" casing.

Minimum mud for samples. HOWCO method of cementing to be used.

Surface casing to be set and cemented in accordance with State Engineering Memo No. 63 covering the Artesia Water Basin.

Sincerely yours,

Approved
Except as follows:

JUL 1 1960

HUMBLE OIL & REFINING COMPANY

(Company or Operator)

By

Position Area Administrative Coordinator

Send Communications regarding well to

Name Mr. E. R. McCarty

Address Box 1600, Midland, Texas

OIL CONSERVATION COMMISSION

By

M. L. Armstrong
OIL AND GAS INSPECTOR

NEW MEXICO OIL CONSERVATION COMMISSION

RECEIVED
Revised 5/1/57

JUN 27 1960

Well Location and Acreage Dedication Plat

Section A.

Date JUN 25 1960 D. C. C.
ARTESIA OFFICE

Operator Humble Oil & Refining Co. Lease Abo-Chalk Bluff Draw Unit
Well No. 14 Unit Letter "F" Section 16 Township 18 South Range 27 East NMPM
Located 1650 Feet From North Line, 1650 Feet From West Line
County Eddy G. L. Elevation Later Dedicated Acreage 40 Acres
Name of Producing Formation Abo Pool Empire-Abo

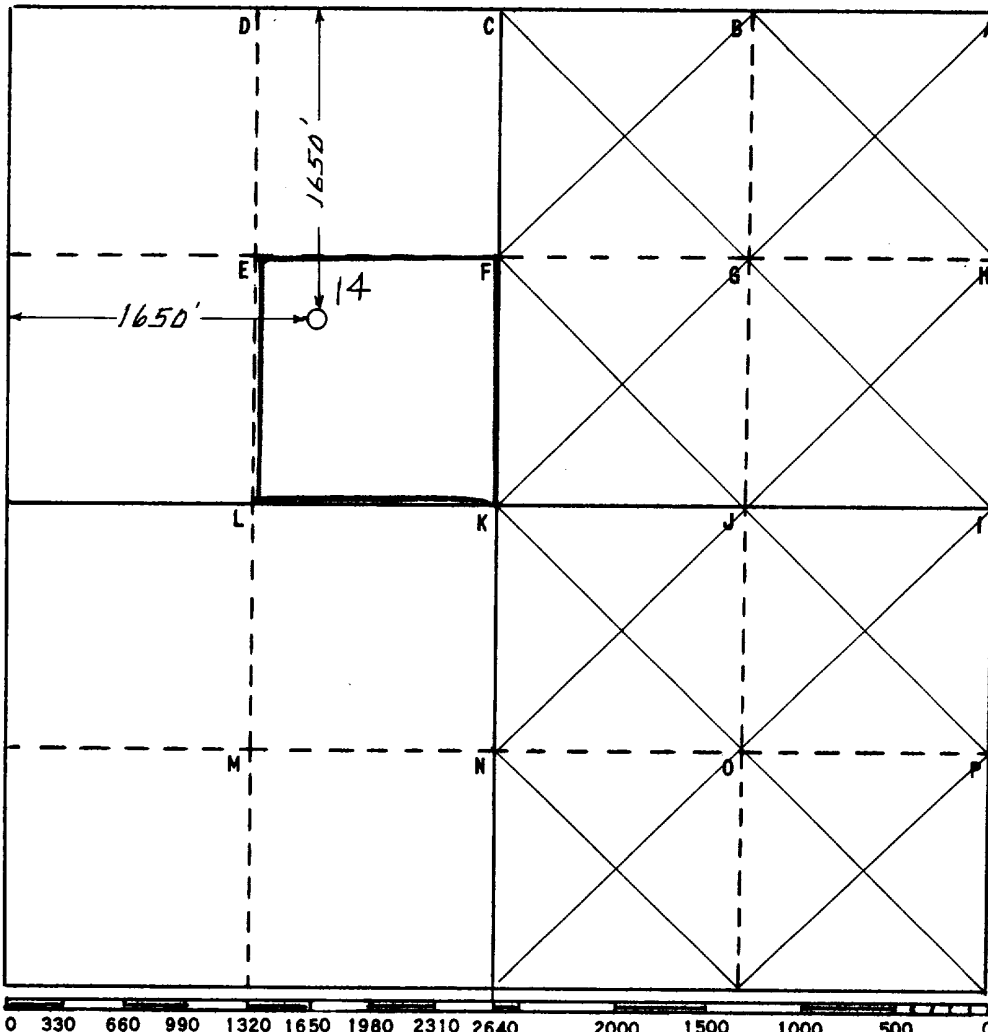
1. Is the Operator the only owner* in the dedicated acreage outlined on the plat below?
Yes ✓ No _____
2. If the answer to question one is "no", have the interests of all the owners been consolidated by communitization agreement or otherwise? Yes ✓ No _____ If answer is "yes," Type of Consolidation Unitization
3. If the answer to question two is "no," list all the owners and thier respective interests below:

Owner

Land Description

<u>Owner</u>	<u>Land Description</u>

Section B



This is to certify that the information in Section A above is true and complete to the best of my knowledge and belief

HUMBLE OIL & REFG. CO.

(Operator)

H. P. Hensley

(Representative)

Box 1600 Midland, Texas
Address

This is to certify that the well location shown on the plat in Section B was plotted from field notes of actual surveys made by me or under my supervision and that the same is true and correct to the best of my knowledge and belief.

Date Surveyed 6-20-60

H. S. Hustedfeld
Registered Professional
Engineer and/or Land Surveyor

Certificate No. 1382

OIL CONSERVATION COMMISSION ARTESIA DISTRICT OFFICE

No. Copies Received

7

DISTRIBUTION

	NO. FORWARDED	
OPERATOR	2	
SANITARY	1	
PROMOTION OFFICE		
STATE LAND OFFICE	1	
U. S. G. S.	2	
TRANSPORTER		
FILE	1	✓
BUREAU OF MINES		