

SANTA FE	
FILE	
U.S.G.S.	
LAND OFFICE	
TRANSPORTER	OIL GAS
PRORATION OFFICE	
OPERATOR	

NEW MEXICO OIL CONSERVATION COMMISSION
Santa Fe, New Mexico

Form C-101
Revised (12/1/55)

NOTICE OF INTENTION TO DRILL

Notice must be given to the District Office of the Oil Conservation Commission and approval obtained before drilling or recompletion begins. If changes in the proposed plan are considered advisable, a copy of this notice showing such changes will be returned to the sender. Submit this notice in **QUINTUPLICATE**. One copy will be returned following approval. See additional instructions in Rules and Regulations of the Commission. **If State Land submit 6 Copies Attach Form C- 128 in triplicate to first 3 copies of form C-101**

Hobbs, New Mexico

(Place)

January 29, 1962

(Date)

RECEIVED

30-015-00911

JAN 30 1962

OIL CONSERVATION COMMISSION
SANTA FE, NEW MEXICO

Gentlemen:

You are hereby notified that it is our intention to commence the Drilling of a well to be known as
Pan American Petroleum Corporation

O. C. C.
ARTESIA, OFFICE

(Company or Operator)

State of New Mexico "CEP"

(Lease)

Well No. **2**

in **1**

(Unit)

The well is

located **990** feet from the **East**

line and **2298.12**

feet from the

South

line of Section **16**

T13 S

R27 E

NMPM.

(GIVE LOCATION FROM SECTION LINE)

Trilobite Abo

Pool,

1947

County

If State Land the Oil and Gas Lease is No. **2 - 7039**

If patented land the owner is

Address

We propose to drill well with drilling equipment as follows: **2" with rotary tools**

The status of plugging bond **blanket bond on file with Commission**

Drilling Contractor **Leo Drilling Company**

Philmore Building

Tulsa, Oklahoma

We intend to complete this well in the **Abo**

formation at an approximate depth of **6100**

feet.

CASING PROGRAM

We propose to use the following strings of Casing and to cement them as indicated:

Size of Hole	Size of Casing	Weight per Foot	New or Second Hand	Depth	Sacks Cement
11"	3 - 5/8"	24.6	New	1500	Circulate
7-7/8"	4 - 1/2"	29.5	New	6100	Sufficient to tie
					into surface
					pipe

If changes in the above plans become advisable we will notify you immediately.

ADDITIONAL INFORMATION (If recompletion give full details of proposed plan of work.)

Approved **JAN 30 1962**, 19.....
Except as follows:

Sincerely yours,

Pan American Petroleum Corporation

Original Signed by (Company or Operator)

V. E. STALEY

By

Position **Area Superintendent**

Send Communications regarding well to

Name **V. E. Staley**

Address **Box 66, Hobbs, New Mexico**

OIL CONSERVATION COMMISSION

By

M. L. Armstrong

NEW MEXICO OIL CONSERVATION COMMISSION
WELL LOCATION AND ACREAGE DEDICATION PLAT

FORM C-128
Revised 5/1/57

SEE INSTRUCTIONS FOR COMPLETING THIS FORM ON THE REVERSE SIDE

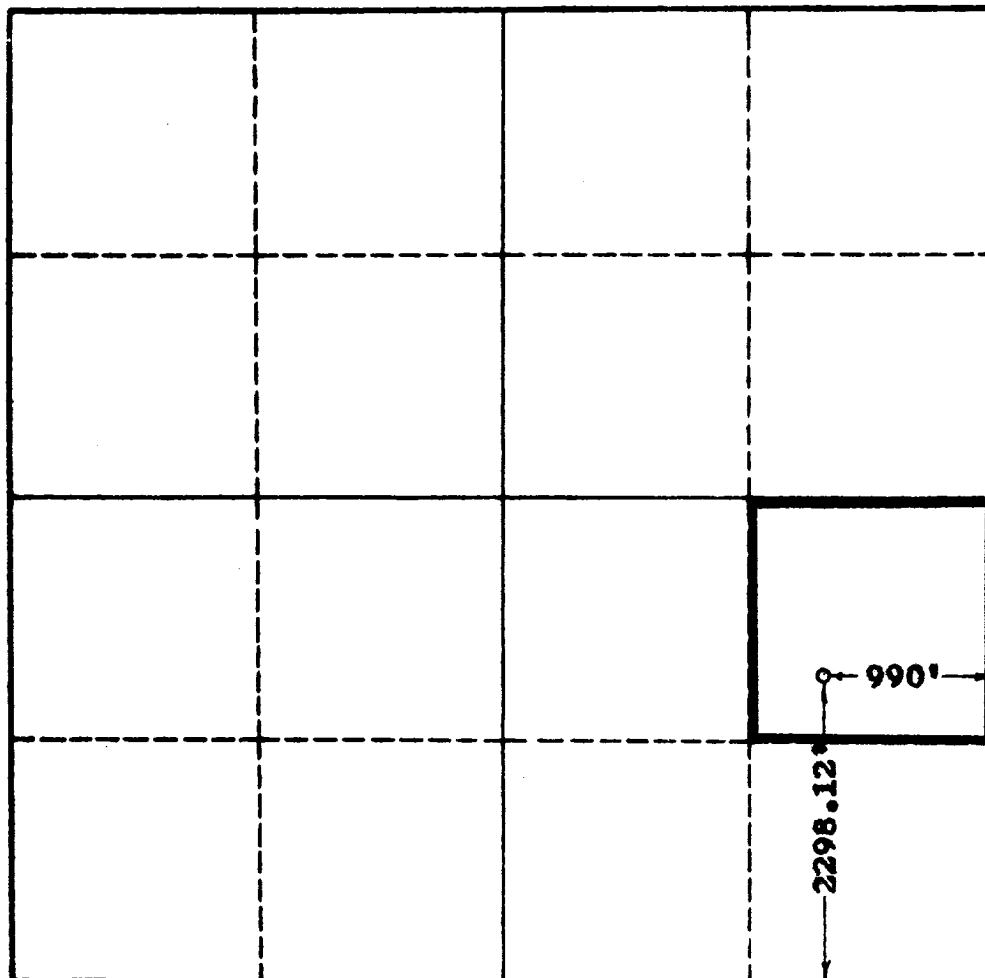
SECTION A

Operator Pan American Petroleum Corp.		Lease State "CB"		Well No. 2
Unit Letter I	Section 16	Township 18 South	Range 27 East	County Eddy
Actual Footage Location of Well: 990 feet from the east line and 2298.12 feet from the south line				
Ground Level Elev. NYA	Producing Formation Empire Abo	Pool Abo	Dedicated Acreage: 40 Acres	

1. Is the Operator the only owner in the dedicated acreage outlined on the plat below? YES ☒ NO ☐ ("Owner" means the person who has the right to drill into and to produce from any pool and to appropriate the production either for himself or for himself and another. (65-3-29 (e) NMSA 1935 Comp.)
2. If the answer to question one is "no," have the interests of all the owners been consolidated by communitization agreement or otherwise? YES ☐ NO ☐ If answer is "yes," Type of Consolidation _____
3. If the answer to question two is "no," list all the owners and their respective interests below:

Owner	Land Description

SECTION B



CERTIFICATION

I hereby certify that the information in SECTION A above is true and complete to the best of my knowledge and belief.

Original Signed by:
V. E. STALEY

Position
Area Superintendent

Company
Pan American Pet. Co.

Date
January 27, 1962

I hereby certify that the well location shown on the plat in SECTION B was plotted from field notes of actual surveys made by me or under my supervision, and that the same is true and correct to the best of my knowledge and belief.

Date Surveyed
Jan. 27, 1962

Registered Professional Engineer and/or Land Surveyor, **JOHN W. WEST**

John W. West
Certificate No.
N. M. - P. E. & L. S. NO. 676