

John A. Mathis, Jr.
SOUTHEAST ENGINEERING CO.

GENERAL SURVEYING

ARTESIA, NEW MEXICO

- PHOTOSTATS
- OZALID PRINTS

COMPANY S.A. Lanning

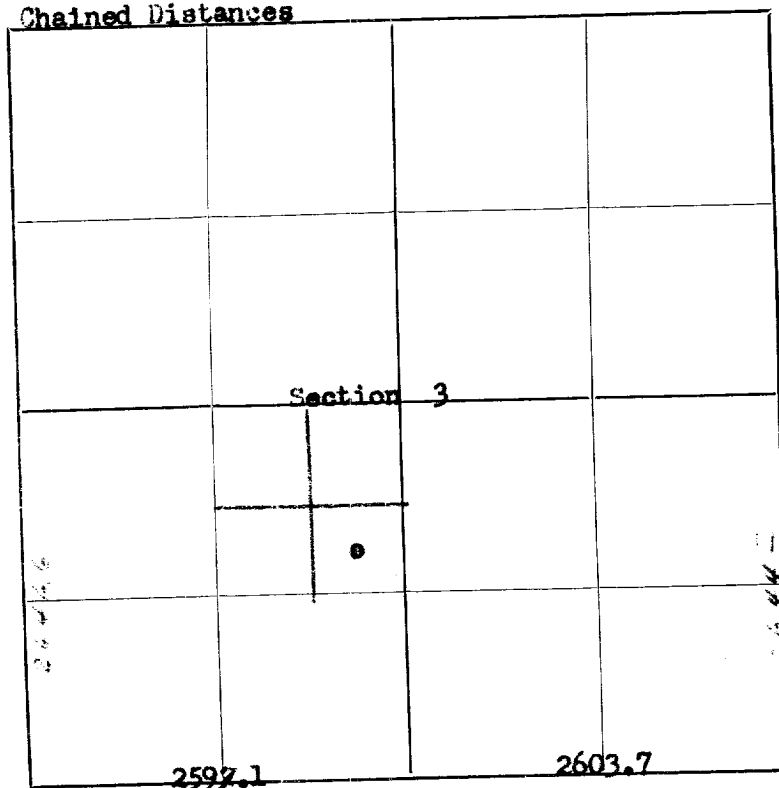
LEASE State WELL NO. 7

SEC. 3 T. 18 S., R. 28 E., N. M. P. M.

LOCATION SE 1/4 SW 1/4 (2272.4' from West Line & 1653.6' from South Line)

COUNTY Eddy NEW MEXICO

Chained Distances



SCALE 4" = 1 MILE

THIS IS TO CERTIFY THAT THE ABOVE PLAT WAS PREPARED FROM FIELD NOTES
OF ACTUAL SURVEYS MADE BY ME OR UNDER MY SUPERVISION AND THAT THE
SAME ARE TRUE AND CORRECT TO THE BEST OF MY KNOWLEDGE AND BELIEF.

SEAL:
ARTESIA, NEW MEXICO

John A. Mathis Jr.
REGISTERED LAND SURVEYOR.

SURVEYED July 8, 19 55

ARTESIA PRINTING CO.