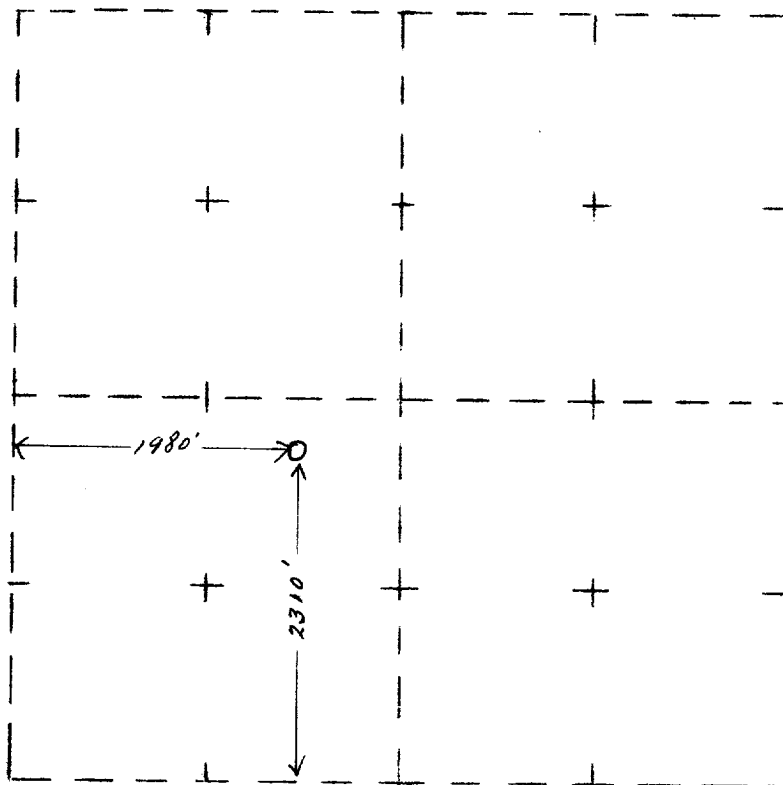


STAKING PLAT

Malco Resler Yates State 119
Operator Lease Well

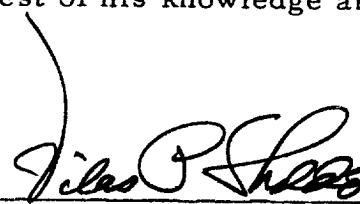
Eddy County, New Mexico

1980 feet from W and 2310 feet from S lines of
Section 14, Township 18, Range 28



Certificate

The undersigned is registered as a Land Surveyor in the State of New Mexico and hereby swears that this plat was prepared from field notes made under his direction, and that it is true and correct to the best of his knowledge and belief.


Vilas P. Sheldon

1914-1915

1914-1915

1914-1915

1914-1915

1914-1915

1914-1915

1914-1915

1914-1915

1914-1915

1914-1915

1914-1915

1914-1915

1914-1915

1914-1915

1914-1915

1914-1915

1914-1915

1914-1915

1914-1915

1914-1915

1914-1915

1914-1915

1914-1915

1914-1915

1914-1915

1914-1915