

NEW MEXICO OIL CONSERVATION COMMISSION
Santa Fe, New Mexico

Form C-101
Revised (12/1/55)

RECEIVED

NOTICE OF INTENTION TO DRILL

MAY 5 1960

Notice must be given to the District Office of the Oil Conservation Commission and approval obtained before drilling or recompletion begins. If changes in the proposed plan are considered advisable, a copy of this notice showing such changes will be returned to the sender. Submit this notice in QUINTUPLICATE. One copy will be returned following approval. See additional instructions in Rules and Regulations of the Commission. If State Land submit 6 Copies Attach Form C- 128 in triplicate to first 3 copies of form C-101

ARTESIA, NEW MEXICO

APRIL 28, 1960

(Place)

(Date)

OIL CONSERVATION COMMISSION
SANTA FE, NEW MEXICO

Gentlemen:

You are hereby notified that it is our intention to commence the Drilling of a well to be known as

RUTH L. WILLIAMS

(Company or Operator)

MORTIN STATE

(Lease)

2X

0

Well No., in The well is

located 810 890 feet from the SOUTH line and 2310 feet from the

EAST

line of Section 17, T. 18, R. 28, NMPM.

(GIVE LOCATION FROM SECTION LINE)

ARTESIA

Pool,

EDDY

County

If State Land the Oil and Gas Lease is No. 647

If patented land the owner is

Address

We propose to drill well with drilling equipment as follows: CABLE TOOLS

The status of plugging bond is RUTH L. WILLIAMS

\$10,000.00

Drilling Contractor WAYNE ADKINS

We intend to complete this well in the LOVINGTON

formation at an approximate depth of 2400 feet.

CASING PROGRAM

We propose to use the following strings of Casing and to cement them as indicated:

Size of Hole	Size of Casing	Weight per Foot	New or Second Hand	Depth	Sacks Cement
8 1/2	7"	17 1/2	Second Hand	500'	50
6 1/2	5 1/2"	15	New	2400'	100

If changes in the above plans become advisable we will notify you immediately.

ADDITIONAL INFORMATION (If recompletion give full details of proposed plan of work.)

MAY 6 1960

Approved....., 19.....
Except as follows:

OIL CONSERVATION COMMISSION

By M. L. Armstrong

Sincerely yours,

RUTH L. WILLIAMS

(Company or Operator)

By WAYNE ADKINS

Position

Send Communications regarding well to

Name WAYNE ADKINS

Address BOX 962, ARTESIA, NEW MEXICO

NEW MEXICO OIL CONSERVATION COMMISSION
WELL LOCATION AND ACREAGE DEDICATION PLAT

FORM C-128
 Revised 5/1/57

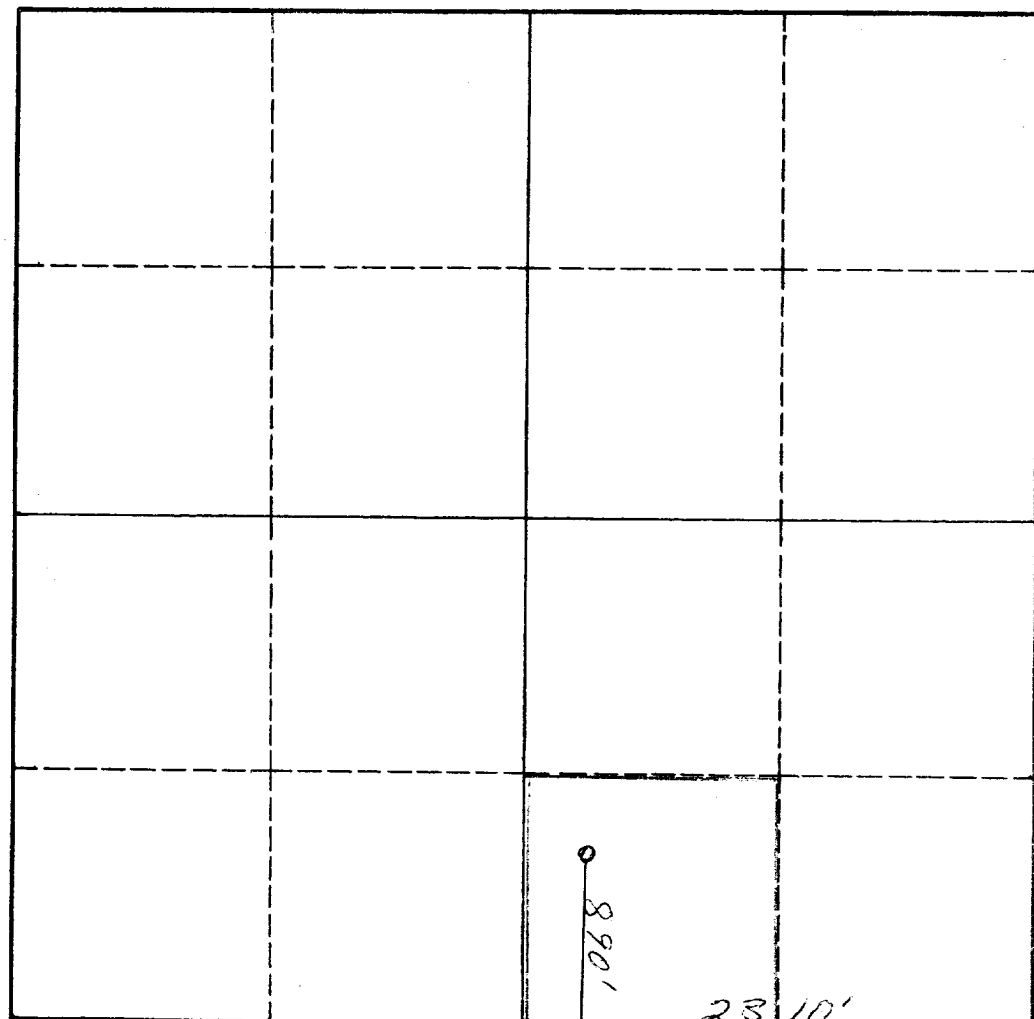
SEE INSTRUCTIONS FOR COMPLETING THIS FORM ON THE REVERSE SIDE.

Operator XXXXXXXXXX RUTH L. WILLIAMS				Lease XXXXXXXXXX WILLIAMS		MORTIN STATE		Well No. 2-X
Unit Letter 0	Section 17	Township 13 S	Range 28 E	County Eddy				
Actual Footage Location of Well: 890 feet from the S line and 2310 feet from the E line								
Ground Level Elev. 890	Producing Formation Grayburg <i>Lorington</i>			Pool Artesia		Dedicated Acreage: 40 Acres		

1. Is the Operator the only owner in the dedicated acreage outlined on the plat below? YES ☒ NO ____ . ("Owner" means the person who has the right to drill into and to produce from any pool and to appropriate the production either for himself or for himself and another. (65-3-29 (e) NMSA 1935 Comp.)
2. If the answer to question one is "no," have the interests of all the owners been consolidated by communitization agreement or otherwise? YES ____ NO ____ . If answer is "yes," Type of Consolidation _____
3. If the answer to question two is "no," list all the owners and their respective interests below:

Owner	Land Description

SECTION B



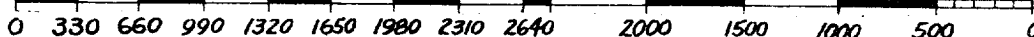
CERTIFICATION

I hereby certify that the information in SECTION A above is true and complete to the best of my knowledge and belief.

Name <i>A. L. Zyman</i>
Position
Company
Date 8-3-60

I hereby certify that the well location shown on the plat in SECTION B was plotted from field notes of actual surveys made by me or under my supervision, and that the same is true and correct to the best of my knowledge and belief.

Date Surveyed 4/26/60
Registered Professional Engineer and/or Land Surveyor <i>W. P. Sheldon</i>
Certificate No. 963



INSTRUCTIONS FOR COMPLETION OF FORM C-128

1. Operator shall furnish and certify to the information called for in Section A.
2. Operator shall outline the dedicated acreage for *both* oil and gas wells on the plat in Section B.
3. A registered professional engineer or land surveyor registered in the State of New Mexico or approved by the Commission shall show on the plat the location of the well and certify this information in the space provided.
4. All distances shown on the plat must be from the outer boundaries of the Section.
5. If additional space is needed for listing owners and their respective interests as required in question 3 of Section A, please use space below.

OIL CONSERVATION COMMISSION		
ARTESIA DISTRICT OFFICE		
Plat Copies Received		6
DISTRIBUTION		
	CO FURNISHED	
OPERATOR	1	
SANTA FE	1	
PRORATION OFFICE		
STATE LAND OFFICE		
U. S. G. S.	2	
TRANSPORTER		
FILE	1	✓
BUREAU OF MINES		