

NUMBER OF COPIES RECEIVED		10
DISTRIBUTION		
SANTA FE		
FILE		✓
U.S.G.S.	2	
LAND OFFICE	1	
TRANSPORTER		
OIL		
GAS		
PRODUCTION OFFICE		
OPERATOR	5	

NEW MEXICO OIL CONSERVATION COMMISSION
Santa Fe, New Mexico

NOTICE OF INTENTION TO DRILL

RECEIVED
 Form C-101
 Revised (12/1/55)
FEB 6 1961
D. C. C. OFFICE

Notice must be given to the District Office of the Oil Conservation Commission and approval obtained before drilling or recompletion begins. If changes in the proposed plan are considered advisable, a copy of this notice showing such changes will be returned to the sender. Submit this notice in QUINTUPLICATE. One copy will be returned following approval. See additional instructions in Rules and Regulations of the Commission. If State Land submit 6 Copies Attach Form C-128 in triplicate to first 3 copies of form C-101

Artesia, New Mexico

(Place)

February 3, 1961

(Date)

OIL CONSERVATION COMMISSION
 SANTA FE, NEW MEXICO

Gentlemen:

You are hereby notified that it is our intention to commence the ^{RE}Drilling of a well to be known as

Graridge Corporation

(Company or Operator)

Lackawanna State

(Lease)

Well No. **4**, in **G** (Unit) The well is

located **1607** feet from the **North** line and **2295** feet from the

East

Line of Section **21**, T. **18S**, R. **28E**, NMPM.

(GIVE LOCATION FROM SECTION LINE)

Artesia

Pool,

Eddy

County

If State Land the Oil and Gas Lease is No. **647**

If patented land the owner is

Address

We propose to drill well with drilling equipment as follows: **Clean out abandoned well and complete as water injection well.**

The status of plugging bond is **\$10,000 Fidelity & Casualty Company of New York covering drilling & plugging for State of New Mexico.**

Drilling Contractor

(will advise later)

We intend to complete this well in the **1st Grayburg**

formation at an approximate depth of **2100 to 2150** feet.

CASING PROGRAM

We propose to use the following strings of Casing and to cement them as indicated:

Size of Hole	Size of Casing	Weight per Foot	New or Second Hand	Depth	Sacks Cement
	7"	20#	second hand	300	75
	4 1/2"	9.50#	New	2200	150

If changes in the above plans become advisable we will notify you immediately.

ADDITIONAL INFORMATION (If recompletion give full details of proposed plan of work.)

Well was originally drilled by V. S. Welch. We propose to re-enter abandoned well with cable tools and clean out to 2200'. This well will be used as a water injection well for water flood operations. Approval to re-drill this unorthodox location was granted by New Mexico Oil Conservation Commission

Order No. R-966-E.

FEB 7 1961, 19

Approved
 Except as follows:

Sincerely yours,

Graridge Corporation

(Company or Operator)

By **J. P. Darnell**
(J. P. Darnell)

Position **Superintendent**

Send Communications regarding well to

Name **Graridge Corporation**

Address **Drawer B, Artesia, New Mexico**

OIL CONSERVATION COMMISSION

By **W. A. Gussert**

NEW MEXICO OIL CONSERVATION COMMISSION
Well Location and Acreage Dedication Plat

Form C-128
Revised 5/1/57
RECEIVED
FEB 6 1961
C. C. ARTEZIA, OFFICE

Section A.

Date May 15, 1959

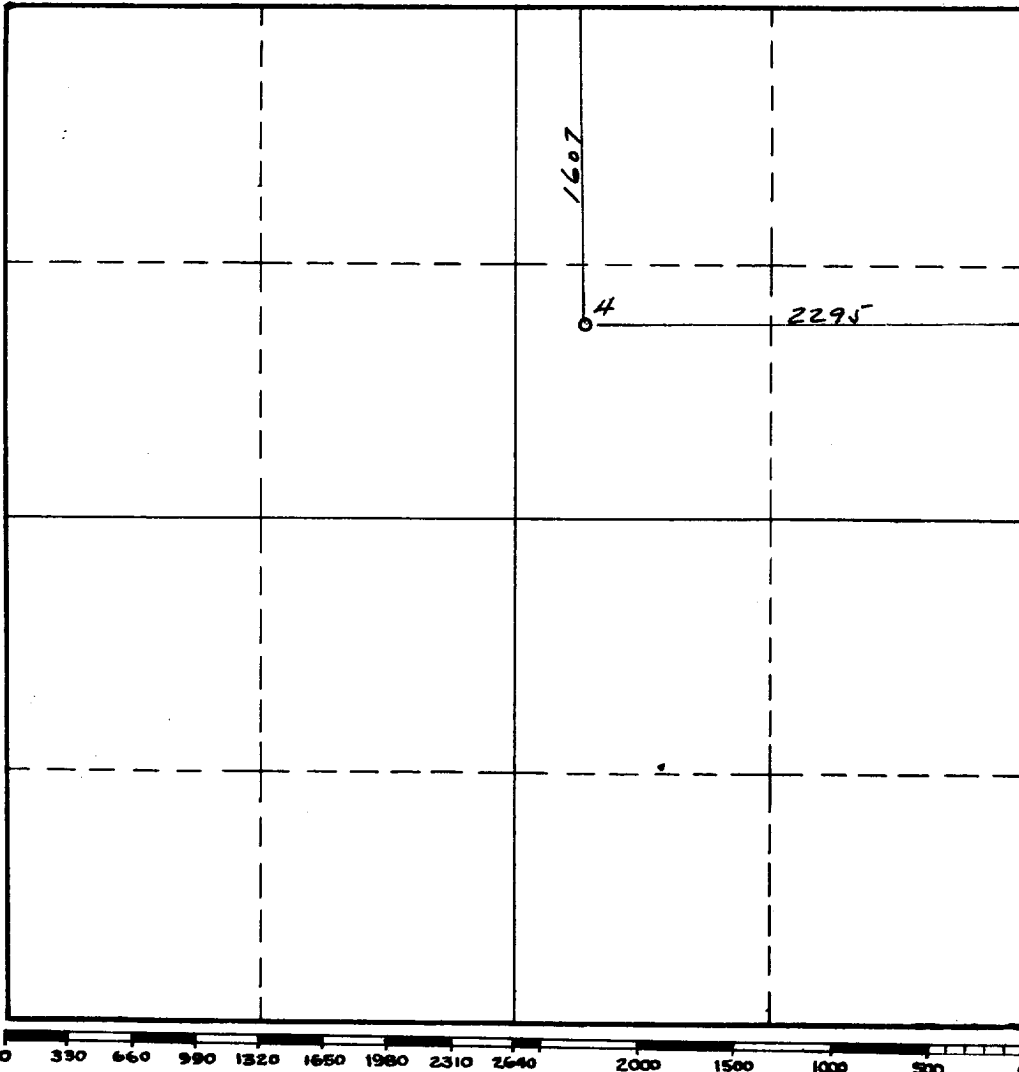
Operator Graridge Corporation
~~The Texas Company~~ Lease xMalak Lackawanna State
Well No. 4 Unit Letter G Section 21 Township 18 South Range 28 East NMPM
Located 1607 Feet From North Line, 2295 Feet From East Line
County Eddy G. L. Elevation 3570 Dedicated Acreage _____ Acres
Name of Producing Formation _____ Pool Artesia

1. Is the Operator the only owner* in the dedicated acreage outlined on the plat below?
Yes X No _____.
2. If the answer to question one is "no," have the interests of all the owners been consolidated by communitization agreement or otherwise? Yes _____ No _____. If answer is "yes," Type of Consolidation _____
3. If the answer to question two is "no," list all the owners and their respective interests below:

Owner

Land Description

Section B



This is to certify that the information in Section A above is true and complete to the best of my knowledge and belief.

Graridge Corporation

~~The Texas Company~~
(Operator)

J. D. Samuel
(Representative)

Artesia
Brookridge, Texas

Address

This is to certify that the well location shown on the plat in Section B was plotted from field notes of actual surveys made by me or under my supervision and that the same is true and correct to the best of my knowledge and belief.

Date Surveyed May 15, 1959

John A. Mathis
Registered Professional
Engineer and/or Land Surveyor.

Certificate No. 1502

(See instructions for completing this form on the reverse side)

INSTRUCTIONS FOR COMPLETION.

1. Operator shall furnish and certify to the information called for in Section A.
2. Operator shall outline the dedicated acreage for both oil and gas wells on the plat in Section B.
3. A registered professional engineer or land surveyor registered in the State of New Mexico or approved by the Commission shall show on the plat the location of the well and certify this information in the space provided.
4. All distances shown on the plat must be from the outer boundaries of Section.
5. If additional space is needed for listing owners and their respective interests as required in question 3, Section A, please use space below

* "Owner" means the person who has the right to drill into and to produce from any pool and to appropriate the production either for himself or for himself and another. (65-3-29 (e) NMSA 1953 Comp.)