

NEW MEXICO OIL CONSERVATION COMMISSION REC Form 0-101
Santa Fe, New Mexico Revised (12/2/55)

MAY 9 1960

NOTICE OF INTENTION TO DRILL

Notice must be given to the District Office of the Oil Conservation Commission and approval obtained before drilling or recompletion begins. If changes in the proposed plan are considered advisable, a copy of this notice showing such changes will be returned to the sender. Submit this notice in **QUINTUPLICATE**. One copy will be returned following approval. See additional instructions in Rules and Regulations of the Commission. If State Land submit 6 Copies Attach Form 0-128 in triplicate to first 3 copies of form 0-101

Breckenridge, Texas
(Place)

May 5, 1960
(Date)

OIL CONSERVATION COMMISSION
SANTA FE, NEW MEXICO

Gentlemen:

30-015-02003

You are hereby notified that it is our intention to commence the Drilling of a well to be known as

Graridge Corporation

(Company or Operator)

Resler Yates State

(Lease)

Well No. 310

I

The well is

located 1650 feet from the South line and 330 feet from the East line of Section 21, T. 18S, R. 28E, NMPM.

(GIVE LOCATION FROM SECTION LINE)

Artesia

Pool,

Eddy

County

If State Land the Oil and Gas Lease is No.

If patented land the owner is.

Address.

We propose to drill well with drilling equipment as follows: 2100' with Rotary Equipment

The status of plugging bond is \$10,000 Fidelity & Casualty Company of New York #1053517 covering drilling & plugging for the state of New Mexico

Drilling Contractor

(Will Advise Later)

COPY

We intend to complete this well in the 1st Grayburg formation at an approximate depth of 2050' to 2100' feet.

CASING PROGRAM

We propose to use the following strings of Casing and to cement them as indicated:

Size of Hole	Size of Casing	Weight per Foot	New or Second Hand	Depth	Backs Cement
10-3/4"	8-5/8"	28#	New	300	200
7-7/8"	4-1/2"	9.5#	New	2100	200

If changes in the above plans become advisable we will notify you immediately.

ADDITIONAL INFORMATION (If recompletion give full details of proposed plan of work.)

This well is to be drilled and used as a water injection well for waterflood up

Approved MAY 9 1960, 19
Except as follows:

Sincerely yours,

Graridge Corporation

(Company or Operator)

By

Charles W. Smith

Position

Production Clerk

Send Communications regarding well to

Name

Graridge Corporation

Box 752, Breckenridge, Texas

OIL CONSERVATION COMMISSION

By

M. L. Armstrong

MAY 4 1960
FORM C-128
Revised 5/1/57
ARTESIA OFFICE

NEW MEXICO OIL CONSERVATION COMMISSION
WELL LOCATION AND ACREAGE DEDICATION PLAT

SEE INSTRUCTIONS FOR COMPLETING THIS FORM ON THE REVERSE SIDE

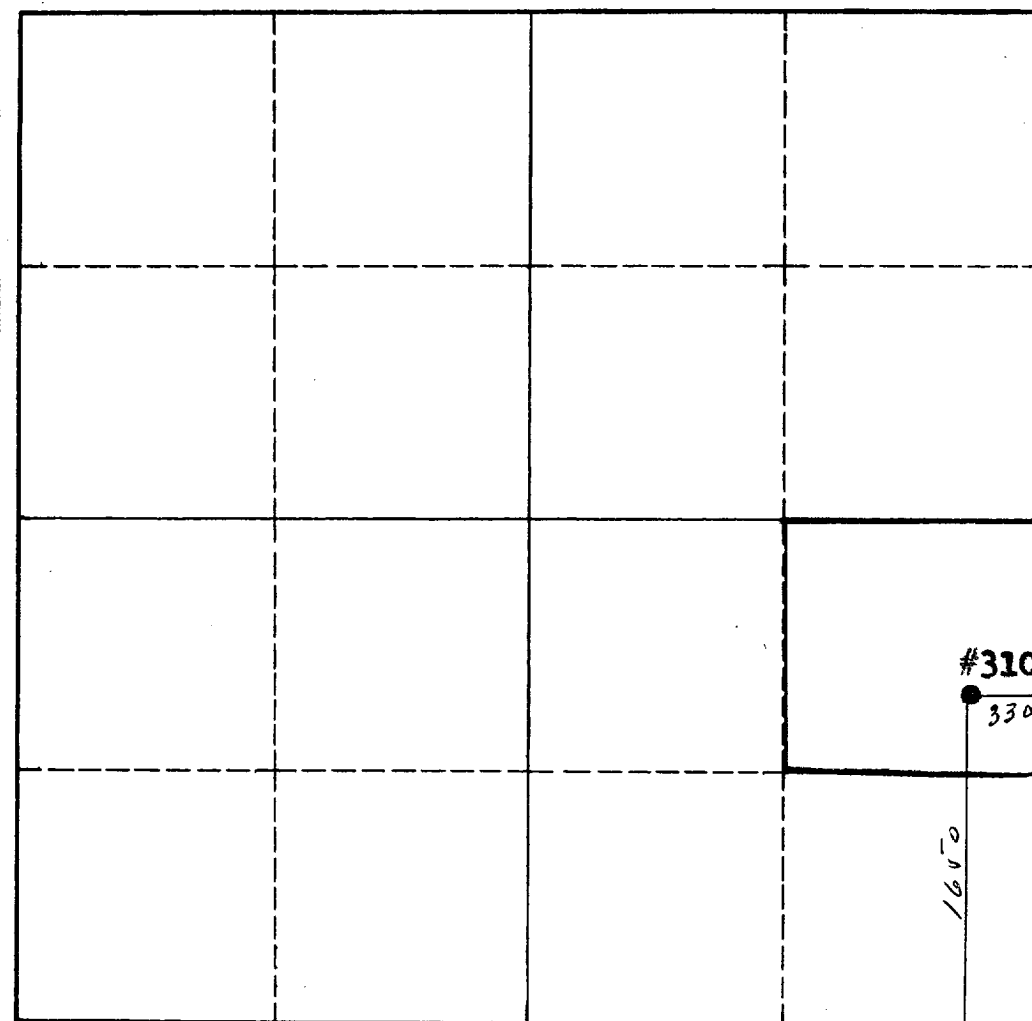
SECTION A

Operator Graridge Corporation			Lease Resler Yates State		Well No. 310
Unit Letter I	Section 21	Township 18S	Range 28E	County Eddy	
Actual Footage Location of Well: 1650 feet from the South line and 330 feet from the East line					
Ground Level Elev. 3581	Producing Formation First Grayburg		Pool Artesia		Dedicated Acreage: Acres

1. Is the Operator the only owner in the dedicated acreage outlined on the plat below? YES ☒ NO ____ . ("Owner" means the person who has the right to drill into and to produce from any pool and to appropriate the production either for himself or for himself and another. (65-3-29 (e) NMSA 1935 Comp.)
2. If the answer to question one is "no," have the interests of all the owners been consolidated by communitization agreement or otherwise? YES ____ NO ____ . If answer is "yes," Type of Consolidation ____
3. If the answer to question two is "no," list all the owners and their respective interests below:

Owner	Land Description

SECTION B



CERTIFICATION

I hereby certify that the information in SECTION A above is true and complete to the best of my knowledge and belief.

Name	<i>Charles W. Mitt</i>
Position	
Company	Graridge Corporation
Date	April 28, 1960

I hereby certify that the well location shown on the plat in SECTION B was plotted from field notes of actual surveys made by me or under my supervision, and that the same is true and correct to the best of my knowledge and belief.

Date Surveyed	May 2, 1960
Registered Professional Engineer and/or Land Surveyor	
<i>John A. Mathis Jr.</i>	
Certificate No.	1502

0 330 660 990 1320 1650 1980 2310 2640 2000 1500 1000 500 0

INSTRUCTIONS FOR COMPLETION OF FORM C-128

1. Operator shall furnish and certify to the information called for in Section A.
2. Operator shall outline the dedicated acreage for *both* oil and gas wells on the plat in Section B.
3. A registered professional engineer or land surveyor registered in the State of New Mexico or approved by the Commission shall show on the plat the location of the well and certify this information in the space provided.
4. All distances shown on the plat must be from the outer boundaries of the Section.
5. If additional space is needed for listing owners and their respective interests as required in question 3 of Section A, please use space below.

COMMISSION	
OFFICE	
6	
SECTION	
FILED	
1	
1	
STATE LAND OFFICE	
U. S. G. S.	2
TRANSPORTER	
FILE	1
BUREAU OF MINES	✓