

NEW MEXICO OIL CONSERVATION COMMISSION
Santa Fe, New Mexico

Form C-101
Revised (12/1/55)

NOTICE OF INTENTION TO DRILL

Notice must be given to the District Office of the Oil Conservation Commission and approval obtained before drilling or recompletion begins. If changes in the proposed plan are considered advisable, a copy of this notice showing such changes will be returned to the sender. Submit this notice in **QUINTUPLICATE**. One copy will be returned following approval. See additional instructions in Rules and Regulations of the Commission. If State Land submit 6 Copies Attach Form C-128 in triplicate to first 3 copies of form C-101

Artesia, New Mexico
(Place)

March 18, 1964
(Date)

OIL CONSERVATION COMMISSION
SANTA FE, NEW MEXICO

Gentlemen:

You are hereby notified that it is our intention to commence the Drilling of a well to be known as

International - Yates
(Company or Operator)

State 647
(Lease)

Well No. 107

L The well is
(Unit)

located 660 feet from the West line and 1980 feet from the

South line of Section 32, T. 18 S., R. 28 E., NMPM.

(GIVE LOCATION FROM SECTION LINE)

Artesia Pool, Eddy County

660' FWL & 1980' FSL

If State Land the Oil and Gas Lease is No. NM 647

If patented land the owner is

Address

We propose to drill well with drilling equipment as follows: Re-enter P&A well with rotary tools

The status of plugging bond is Blanket

Drilling Contractor Company tools

We intend to complete this well in the San Andres

formation at an approximate depth of 2800 feet.

Sec. 32, T. 18 S., R. 28 E.

CASING PROGRAM

We propose to use the following strings of Casing and to cement them as indicated:

Size of Hole	Size of Casing	Weight per Foot	New or Second Hand	Depth	Sacks Cement
<u>10 1/4" 8"</u>	<u>7"</u>	<u>17 lb.</u>	<u>Used</u>	<u>250'</u>	<u>75 sx.</u>
<u>8" & 6"</u>	<u>4 1/2"</u>	<u>11.6 lb.</u>	<u>New</u>	<u>2800'</u>	<u>150 sx.</u>

If changes in the above plans become advisable we will notify you immediately.

ADDITIONAL INFORMATION (If recompletion give full details of proposed plan of work.)

Well was drilled originally by Malco-Resler-Yates, P&A June 14, 1952, at TD 2051 ft., plugs at 1950', 250', and surface, 8 5/8" csg. set at 506 ft., knocked off and pulled from 250'. Marker set at surface.

Approved MAR 26 1964, 19.....
Except as follows:

OIL CONSERVATION COMMISSION

By [Signature]

Sincerely yours,

International - Yates
(Company or Operator)
By [Signature]

Position District Engineer
Send Communications regarding well to

Name International - Yates
Address P. O. Box 427 Artesia New Mex.

OIL CONSERVATION COMMISSION

ARTESIA DISTRICT OFFICE

No. of Copies Required 8

DISTRIBUTION

	NO. FURNISHED	
PERMITS	<u>6</u>	
RENTAL FE	<u>1</u>	
PRODUCTION OFFICE		
STATE LAND OFFICE		
U. S. G. S.		
TRANSFORMER		
WELL	<u>1</u>	
SYSTEM OF MINES	<u>1</u>	

NUMBER		COPIES RECEIVED	
DISTRIBUTION		8	
SANTA FE			
P. L. E.			
U. S. G. S.			
LAND OFFICE			
TRANSPORTER	OIL		
	GAS		
PRODUCTION OFFICE			
OPERATOR			

NEW MEXICO OIL CONSERVATION COMMISSION
WELL LOCATION AND ACREAGE DEDICATION PLAT
 SEE INSTRUCTIONS FOR COMPLETING THIS FORM ON THE REVERSE SIDE

FORM C-128
 Revised 5/1/57

SECTION A

Operator International - Yates			Lease State 647		Well No. 107
Unit Letter L	Section 32	Township 18 S.	Range 28 E.	County Eddy	
Actual Footage Location of Well: 660 feet from the West line and 1980 feet from the South line					
Ground Level Elev. 3549'	Producing Formation Grayburg-San Andres		Pool Artesia		Dedicated Acreage: 40 Acres

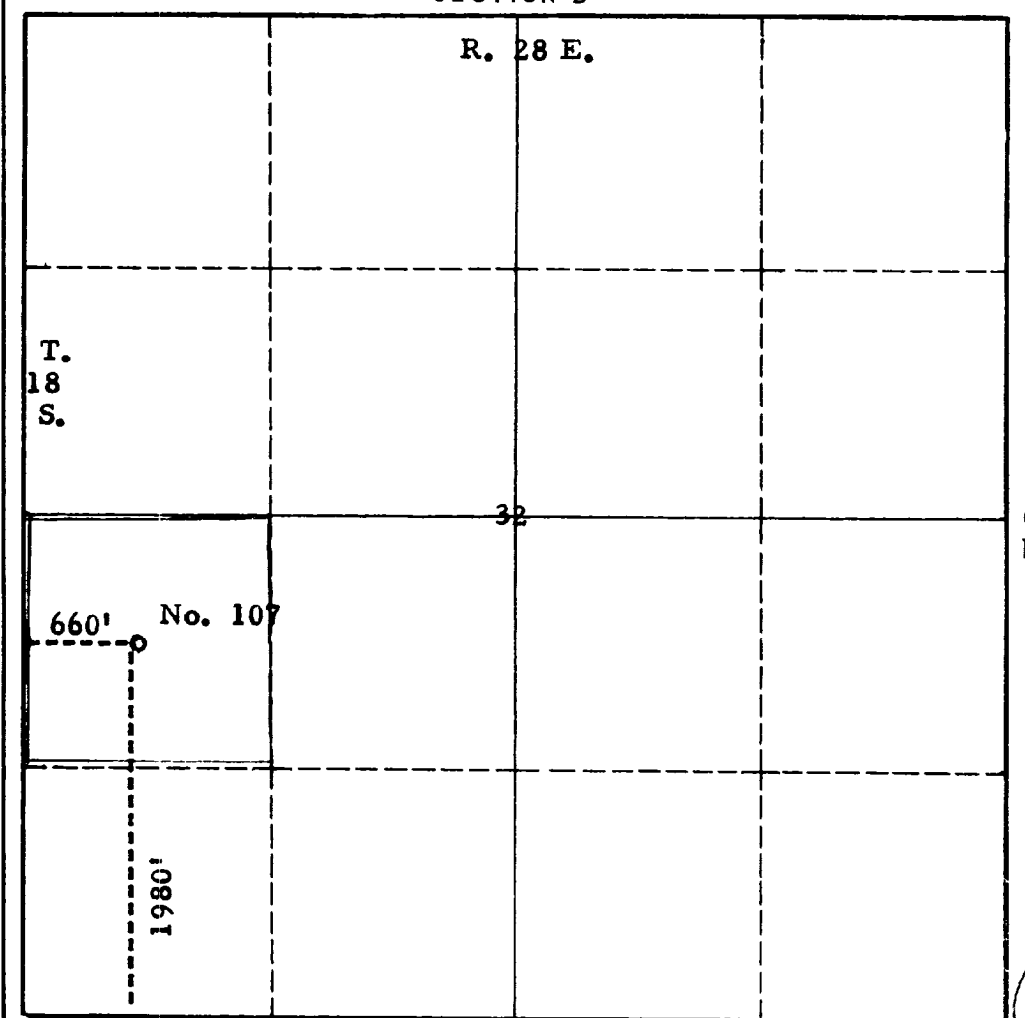
1. Is the Operator the only owner in the dedicated acreage outlined on the plat below? YES ☒ NO ____ . ("Owner" means the person who has the right to drill into and to produce from any pool and to appropriate the production either for himself or for himself and another. (65-3-29 (e) NMSA 1935 Comp.)
2. If the answer to question one is "no," have the interests of all the owners been consolidated by communitization agreement or otherwise? YES ____ NO ____ . If answer is "yes," Type of Consolidation _____
3. If the answer to question two is "no," list all the owners and their respective interests below:

RECEIVED

Owner	Land Description
	MAR 25 1964
	O. C. C.

**ARTESIA, OFFICE
 CERTIFICATION**

SECTION B



I hereby certify that the information in SECTION A above is true and complete to the best of my knowledge and belief.

Name B. J. Simpson
Position District Superintendent
Company International - Yates
Date March 18, 1964

Well drilled in 1952, P&A 6-14-52, originally surveyed by V. P. Sheldon.

I hereby certify that the well location shown on the plat in SECTION B is true and correct to the best of my knowledge and belief.

Date Surveyed March 14, 1964
Registered Professional Engineer and/or Land Surveyor H. P. Sheldon
Certificate No. 3650

INSTRUCTIONS FOR COMPLETION OF FORM C-128

1. Operator shall furnish and certify to the information called for in Section A.
2. Operator shall outline the dedicated acreage for *both* oil and gas wells on the plat in Section B.
3. A registered professional engineer or land surveyor registered in the State of New Mexico or approved by the Commission shall show on the plat the location of the well and certify this information in the space provided.
4. All distances shown on the plat must be from the outer boundaries of the Section.
5. If additional space is needed for listing owners and their respective interests as required in question 3 of Section A, please use space below.