

RE

JAN 14 1960

NOTICE OF INTENTION TO DRILL

Notice must be given to the District Office of the Oil Conservation Commission and approval obtained before drilling or recompletion begins. If changes in the proposed plan are considered advisable, a copy of this notice showing such changes will be returned to the sender. Submit this notice in **QUINTUPLICATE**. One copy will be returned following approval. See additional instructions in Rules and Regulations of the Commission. If State Land submit 6 Copies Attach Form O-128 in triplicate to first 3 copies of form O-101.

Breckenridge, Texas
(Place)

January 12, 1960
(Date)

OIL CONSERVATION COMMISSION
SANTA FE, NEW MEXICO

Gentlemen:

You are hereby notified that it is our intention to commence the Drilling of a well to be known as

Granridge Corporation

(Company or Operator)

Solt-State-Welch

(Lease)

Well No. 4, in L The well is

located 1532 feet from the South line and 1019 feet from the West line of Section 4, T. 18S, R. 28E, NMPM.

(GIVE LOCATION FROM SECTION LINE)

Artesia Pool, Eddy County

If State Land the Oil and Gas Lease is No. B-3823

If patented land the owner is

Address

We propose to drill well with drilling equipment as follows: Clean out abandoned well to total depth with cable tools and recomplete.

The status of plugging bond is \$10,000 Fidelity & Casualty Company of New York #3-1053517 covering drilling & plugging in State of New Mexico.

Drilling Contractor

(Will Advise Later)

We intend to complete this well in the Premier

formation at an approximate depth of 2225-2300 feet.

CASING PROGRAM

We propose to use the following strings of Casing and to cement them as indicated:

Size of Hole	Size of Casing	Weight per Foot	New or Second Hand	Depth	Sacks Cement
12 1/4"	8 5/8"	28#	Used	300	200
7 7/8"	4 1/2"	9.5#	New	2300	150

If changes in the above plans become advisable we will notify you immediately.

ADDITIONAL INFORMATION (If recompletion give full details of proposed plan of work.)

This well was originally drilled by Dandiger Oil & Refining Company as #4 Kaseman State. Propose to re-enter abandoned well and clean out to total depth with cable tools, set casing and complete as producing oil well in our waterflood operations. Please refer to Administrative Order No. R-952-A.

Approved: JAN 14 1960, 19.....
Except as follows:

Sincerely yours,

Granridge Corporation

(Company or Operator)

By: Charles W. Smith

Position: Production Clerk

Send Communications regarding well to

Name: Granridge Corporation

Address: Box 752, Breckenridge, Texas

OIL CONSERVATION COMMISSION

By: M. L. Armstrong
OIL AND GAS INSPECTOR

OIL CONSERVATION COMMISSION
ARTESIA DISTRICT OFFICE

No. Copies Received

RECEIVED

	NO. FURNISHED	
OPERATOR		
SANTA FE		
PRODUCTION OFFICE		
STATE LAND OFFICE		
U. S. G. S.		
TRANSPORTER		
FILE		
BUREAU OF MINES		

NEW MEXICO
OIL CONSERVATION COMMISSION

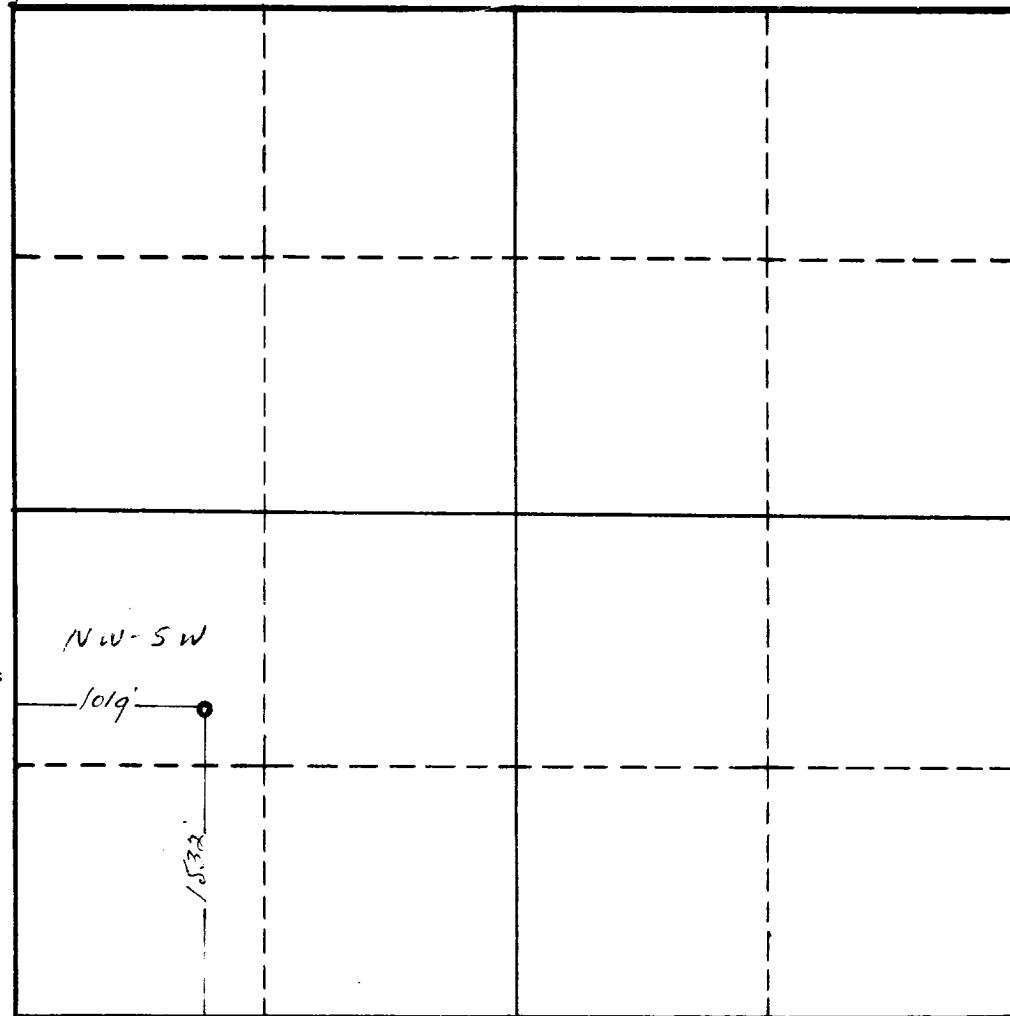
RECEIVED

JAN 14 1956
Form C-128

Well Location and/or Gas Proration Plat

Operator Graridge Corporation
~~xx The Texas Company~~ Lease Salt-Stat-Welch
Well No. 4 Section 4 Township 18S Range 28E NMPM
Located 1532 Feet From South Line, 1019 Feet From West Line,
Eddy County, New Mexico. G. L. Elevation _____
Name of Producing Formation _____ Pool _____ Dedicated Acreage _____

(Note: All distances must be from outer boundaries of Section)



NOTE

This section of
form is to be
used for gas
wells only.



1. Is this Well a Dual Comp. ? Yes ___ No ___.
2. If the answer to Question 1 is yes, are there any other dually completed wells within the dedicated acreage? Yes ___ No ___.

Name _____
Position _____
Representing _____
Address _____

This is to certify that the above plat was prepared from field notes of actual surveys made by me or under my supervision and that the same are true and correct to the best of my knowledge and belief.

Date Surveyed October 25, 1956
John A. Mathis
Registered Professional Engineer and/or
Land Surveyor

OIL CONSERVATION COMMISSION		
ARTERIA DISTRICT OFFICE		
No. Cont'd	DATE	TIME
OPERATOR		
SURVEYOR	1	
PROBATION OFFICE	1	
STATE LAND OFFICE	1	
U. S. G. S.	2	
TRANSPORTER		
FILE		
BUREAU OF MINES	1	✓