

NEW MEXICO OIL CONSERVATION COMMISSION  
Santa Fe, New Mexico

Form C-101  
Revised (12/1/55)

## NOTICE OF INTENTION TO DRILL

Notice must be given to the District Office of the Oil Conservation Commission and approval obtained before drilling or recompletion begins. If changes in the proposed plan are considered advisable, a copy of this notice showing such changes will be returned to the sender. Submit this notice in QUINTUPLICATE. One copy will be returned following approval. See additional instructions in Rules and Regulations of the Commission. If State Land submit 6 Copies Attach Form C- 128 in triplicate to first 3 copies of form C-101 on all wells

Artesia, New Mexico  
(Place)

November 29, 1957  
(Date)

OIL CONSERVATION COMMISSION  
SANTA FE, NEW MEXICO

Gentlemen:

You are hereby notified that it is our intention to commence the Drilling of a well to be known as

Roach & Shepard

(Company or Operator)

Signal State

(Lease)

Well No. 2

in

K

(Unit)

The well is

located 1650 feet from the South line and 1650 feet from the

West

line of Section 8, T. 18 S, R. 28 E, NMPM.

(GIVE LOCATION FROM SECTION LINE)

Artesia

Pool,

Eddy

County

If State Land the Oil and Gas Lease is No. E-7179

If patented land the owner is

Address

We propose to drill well with drilling equipment as follows: Cable tools

The status of plugging bond is Blanket

Drilling Contractor Roach & Shepard

102 So. Second

Artesia, New Mexico

We intend to complete this well in the Premier or Lovington

formation at an approximate depth of 2400 feet.

### CASING PROGRAM

We propose to use the following strings of Casing and to cement them as indicated:

Size of Hole	Size of Casing	Weight per Foot	New or Second Hand	Depth	Sacks Cement
10"	8 5/8"	28#	Used	500	50
8"	5 1/2"	14#	New	2300	100

If changes in the above plans become advisable we will notify you immediately.

### ADDITIONAL INFORMATION

Approved NOV 29 1957, 19  
Except as follows:

OIL CONSERVATION COMMISSION

By M L Armstrong

Sincerely yours,

ROACH & SHEPARD

(Company or Operator)

By

Robert W. Bourland

Position Agent

Send Communications regarding well to

Name ROACH & SHEPARD

Address 102 So. Second, Artesia, N. Mex.

OIL CONSERVATION COMMISSION	
ARTESIA DISTRICT OFFICE	
No. Copies Received	
S. M. BUTLER	
DATE	NO.
APR 10 1934	10
Santa Fe	
Proctor, O. M.	
TYPE	
U. S. G. O.	
TELETYPE	
FILE	

NEW MEXICO OIL CONSERVATION COMMISSION  
Well Location and Acreage Dedication Plat

Section A.

Date November 27, 1957

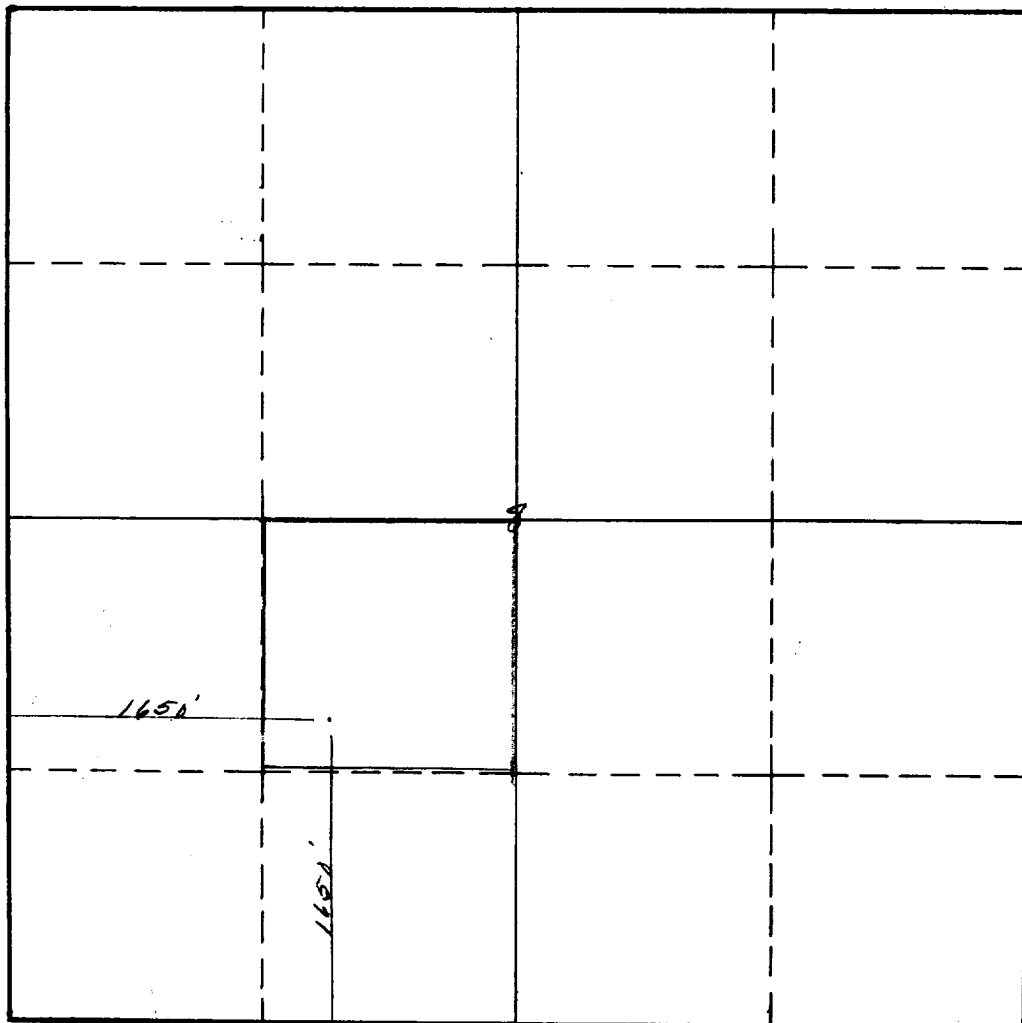
Operator Roach & Shepard Lease Signal State  
Well No. 2 Unit Letter K Section 8 Township 18 South Range 28 East NMPM  
Located 1650 Feet From South Line, 1650 Feet From West Line  
County Elddy G. L. Elevation \_\_\_\_\_ Dedicated Acreage 40 Acres  
Name of Producing Formation Grayburg Pool Artesia

1. Is the Operator the only owner\* in the dedicated acreage outlined on the plat below?  
Yes ☒ No \_\_\_\_\_.
2. If the answer to question one is "no," have the interests of all the owners been consolidated by communitization agreement or otherwise? Yes \_\_\_\_\_ No \_\_\_\_\_. If answer is "yes," Type of Consolidation \_\_\_\_\_
3. If the answer to question two is "no," list all the owners and their respective interests below:

Owner

Land Description

Section B



This is to certify that the information in Section A above is true and complete to the best of my knowledge and belief.

ROACH & SHEPARD

(Operator)

Robert D. Bousland  
(Representative)

Artesia, New Mexico

Address

This is to certify that the well location shown on the plat in Section B was plotted from field notes of actual surveys made by me or under my supervision and that the same is true and correct to the best of my knowledge and belief.

Date Surveyed November 27, 1957

Vilma P. Johnson  
Registered Professional  
Engineer and/or Land Surveyor.

Certificate No. 963

(See instructions for completing this form on the reverse side)

INSTRUCTIONS FOR COMPLETION :

1. Operator shall furnish and certify to the information called for in Section A.
2. Operator shall outline the dedicated acreage for both oil and gas wells on the plat in Section B.
3. A registered professional engineer or land surveyor registered in the State of New Mexico or approved by the Commission shall show on the plat the location of the well and certify this information in the space provided.
4. All distances shown on the plat must be from the outer boundaries of Section.
5. If additional space is needed for listing owners and their respective interests as required in question 3, Section A, please use space below

OIL CONSERVATION COMMISSION	
ARTS DISTRICT OFFICE	
No. Copies Received	
DISTRIBUTION	
Operator	
Operator Office	
State Engineer	
U.S. Oil	
Inspector	
File	

\* "Owner" means the person who has the right to drill into and to produce from any pool and to appropriate the production either for himself or for himself and another. (65-3-29 (e) NMSA 1953 Comp.)