

UNITED STATES  
DEPARTMENT OF THE INTERIOR  
BUREAU OF LAND MANAGEMENT

N.M. Oil & Gas Division  
311 S. 1st St.  
Artesia, NM 88210-2834

FORM APPROVED  
Budget Bureau No. 1004-0135  
Expires: March 31, 1993

**SUNDRY NOTICES AND REPORTS ON WELLS**

Do not use this form for proposals to drill or to deepen or reentry to a different reservoir.  
Use "APPLICATION FOR PERMIT—" for such proposals

**SUBMIT IN TRIPLICATE**

1. Type of Well  
☒ Oil Well ☐ Gas Well ☐ Other

2. Name of Operator  
YATES PETROLEUM CORPORATION

(505) 748-1471

3. Address and Telephone No.  
105 South 4th St., Artesia, NM 88210

4. Location of Well (Footage, Sec., T., R., M., or Survey Description)

2310' FNL & 330' FEL of Section 3-T18S-R29E (Unit H, SENE)

5. Lease Designation and Serial No.

LC-058480

6. If Indian, Allottee or Tribe Name

7. If Unit or CA, Agreement Designation

8. Well Name and No.

WLHU G4S Unit Tract 10B-3

9. API Well No.

30-015-03275

10. Field and Pool, or Exploratory Area

Loco Hills Queen-GB-SA

11. County or Parish, State

Eddy Co., NM

12. CHECK APPROPRIATE BOX(s) TO INDICATE NATURE OF NOTICE, REPORT, OR OTHER DATA

TYPE OF SUBMISSION

- ☒ Notice of Intent  
☐ Subsequent Report  
☐ Final Abandonment Notice

TYPE OF ACTION

- ☒ Abandonment  
☐ Recompletion  
☐ Plugging Back  
☐ Casing Repair  
☐ Altering Casing  
☐ Other

- ☐ Change of Plans  
☐ New Construction  
☐ Non-Routine Fracturing  
☐ Water Shut-Off  
☐ Conversion to Injection  
☐ Dispose Water

(Note: Report results of multiple completion on Well Completion or Recompletion Report and Log form.)

13. Describe Proposed or Completed Operations (Clearly state all pertinent details, and give pertinent dates, including estimated date of starting any proposed work. If well is directionally drilled, give subsurface locations and measured and true vertical depths for all markers and zones pertinent to this work.)

Propose to plug and abandon as follows:

1. TOOH with 2" ball valve and single joint of 2-3/8" tubing.
2. TIH with tubing to 2541' (end of casing). Set CIBP at 2500'. TIH with open ended tubing. Load hole with plugging mud. Spot a 30 sacks Class C cement plug from 2500-2350'.
3. TOOH with tubing. Perforate 7" casing with 6 shots at 1200' and 4 shots at 300'.
4. TIH with cement retainer and tubing. Set retainer at 1100'. Sting into retainer - establish injection rate - squeeze with 75 sacks Class C cement. Obtain a positive pressure before stinging out of retainer. Overdisplace and re-squeeze with 100 sacks Class C cement + CaCl2 if necessary. TOOH with tubing.
5. TIH with cement retainer and tubing. Set retainer at 275'. Open 8-5/8" casing valve. Sting into retainer - establish circulation/injection rate - squeeze with 60 sacks Class C cement. Sting out of retainer. Spot a 30 sack Class C cement plug inside 7" casing from 275-150'. TOOH with tubing.
6. Spot a 15 sack Class C cement plug at surface.
7. Install regulation abandonment marker.

NOTIFY BLM-CARLSBAD (505-887-6544) AND OCD-ARTESIA (505-748-1283) 24 HOURS PRIOR TO COMMENCING PLUGGING OPERATIONS

14. I hereby certify that the foregoing is true and correct

Signed

Title Operations Technician

Date April 1, 1998

(This space for Federal or State office use)

Approved by (ORIG. SGD.) ALEXIS C. SWOBODA

PETROLEUM ENGINEER

Date APR 03 1998

Conditions of approval, if any:

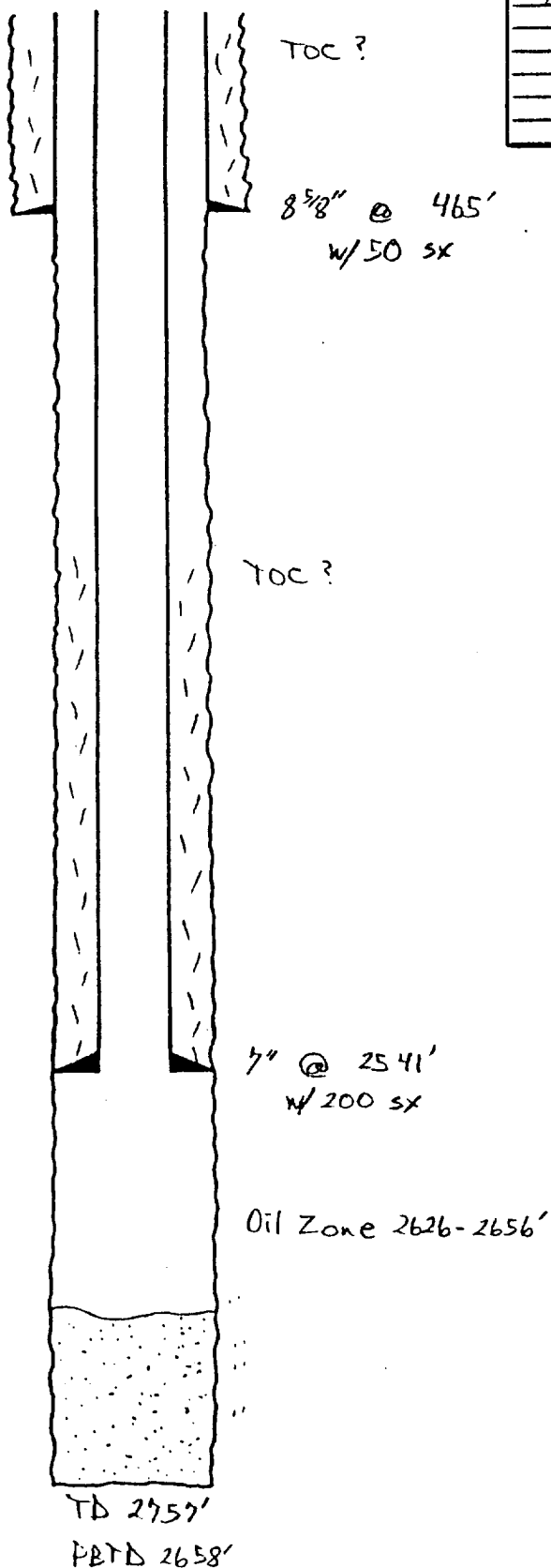
**SEE ATTACHED FOR  
CONDITIONS OF APPROVAL**

(52)

WELL NAME: WILHU T<sub>1</sub> 1B-3 FIELD AREA: \_\_\_\_\_  
 LOCATION: 2310' ENL, 330' FEL 3-185-29E Edley County  
 GL: 3523' ZERO: \_\_\_\_\_' AGL: \_\_\_\_\_'  
 KB: \_\_\_\_\_' ORIG. DRLG./COMPL. DATE: \_\_\_\_\_  
 COMMENTS: Spud: 4-30-40  
Comp: 6-1-40

## CASING PROGRAM:

SIZE/WT./GR./CONN.	DEPTH SET
8 5/8" 28 #	465'
7" 20 #	2541'



Tops: Salt 550'  
 Anhydrite 740'  
 Red Sand 2145'  
 Gray Lime 2480'

- SKETCH NOT TO SCALE -

REVISED: \_\_\_\_\_