

STATE OF NEW MEXICO
ENERGY AND MINERALS DEPARTMENT

NO. OF COPIES RECEIVED	
DISTRIBUTION	
SANTA FE	<input checked="" type="checkbox"/>
FILE	<input checked="" type="checkbox"/>
U.S.G.S.	
LAND OFFICE	
OPERATOR	<input checked="" type="checkbox"/>

OIL CONSERVATION DIVISION

RECEIVED BY P.O. BOX 2088

SANTA FE, NEW MEXICO 87501

APR 30 1985

C. G. C.

ARTESIAL OFFICE

Form C-103
Revised 10-1-78

5a. Indicate Type of Lease	
State <input type="checkbox"/>	Fee <input checked="" type="checkbox"/>
5. State Oil & Gas Lease No.	

SUNDRY NOTICES AND REPORTS ON WELLS

(DO NOT USE THIS FORM FOR PROPOSALS TO DRILL OR TO DEEPEN OR PLUG BACK TO A DIFFERENT RESERVOIR. USE "APPLICATION FOR PERMIT -" (FORM C-101) FOR SUCH PROPOSALS.)

1. OIL WELL <input checked="" type="checkbox"/> GAS WELL <input type="checkbox"/> OTHER <input type="checkbox"/>	7. Unit Agreement Name
2. Name of Operator Anadarko Production Company	8. Farm or Lease Name Murdock
3. Address of Operator P. O. Drawer 30	9. Well No. 2
4. Location of Well UNIT LETTER M 330 FEET FROM THE South LINE AND 990 FEET FROM THE West LINE, SECTION 4 TOWNSHIP 18S RANGE 29E NMPM.	10. Field and Pool, or Wildcat Loco Hills-Queen-G-SA
15. Elevation (Show whether DF, RT, GR, etc.) Unknown	12. County Eddy

Check Appropriate Box To Indicate Nature of Notice, Report or Other Data
NOTICE OF INTENTION TO: SUBSEQUENT REPORT OF:

PERFORM REMEDIAL WORK <input type="checkbox"/>	PLUG AND ABANDON <input checked="" type="checkbox"/>	REMEDIAL WORK <input type="checkbox"/>	ALTERING CASING <input type="checkbox"/>
TEMPORARILY ABANDON <input type="checkbox"/>	CHANGE PLANS <input type="checkbox"/>	COMMENCE DRILLING OPNS. <input type="checkbox"/>	PLUG AND ABANDONMENT <input type="checkbox"/>
PULL OR ALTER CASING <input type="checkbox"/>	OTHER <input checked="" type="checkbox"/> Re-plug	CASING TEST AND CEMENT JOB <input type="checkbox"/>	

17. Describe Proposed or Completed Operations (Clearly state all pertinent details, and give pertinent dates, including estimated date of starting any proposed work) SEE RULE 1103.

Note: Formerly J. Cleo Thompson well. Replugging required by NMOC.

- Blade pad; dig workover pit; set anchors; dig out surface and install workover head.
- Rig up pulling unit and reverse unit.
- Pick up bit and DCs; drill out cement plugs and clean out to 2437' (50' below Grayburg Formation top) as shown on schematic. Circulate hole with 10# brine and salt gel mud.
- Spot 35 sx Class H cement with 5% CaCl from 2437' to 2257'; this plug will cover Grayburg Formation top and 7" casing shoe.
- Tag top of plug after 2 hours with perforating gun; pull up and perf 4 squeeze holes @ 905' (100' below Salt section).
- Spot 40 sx Class H cement with 5% CaCl from 905' to 700' and squeeze half of plug out squeeze holes; this plug will isolate bottom of Salt section.
- Tag top of plug after 2 hours with perforating guns; pull up and perf 4 squeeze holes @ 270' (50' above Salt Section).
- Circulate cement down 7" casing out holes @ 270' and up 8-5/8" casing to surface; this plug will isolate top of Salt and also serve as surface plug.
- Cut off all casing and anchors below surface; set P & A marker; clean & level location.

Note: See item #5 - If 7" casing is full of holes, will shoot off and pull then plug bottom of Salt, top of Salt and surface in open hole. See item #8 - If cannot establish circulation to surface will spot 200' cement plug from 270' to 70' and squeeze half of plug out perfs; tag plug with wireline and set a 50' surface plug. There will be 10# brine and Salt gel mud between all plugs.

18. I hereby certify that the information above is true and complete to the best of my knowledge and belief.

SIGNED Jerry E. Suchler TITLE Area Supervisor

Original Signed By
Les A. Clements

Supervisor District II

DATE April 30, 1985

MAY 6 1985

APPROVED BY
CONDITIONS OF APPROVAL, IF ANY:

OPERATOR

LEASE

WELL NO.

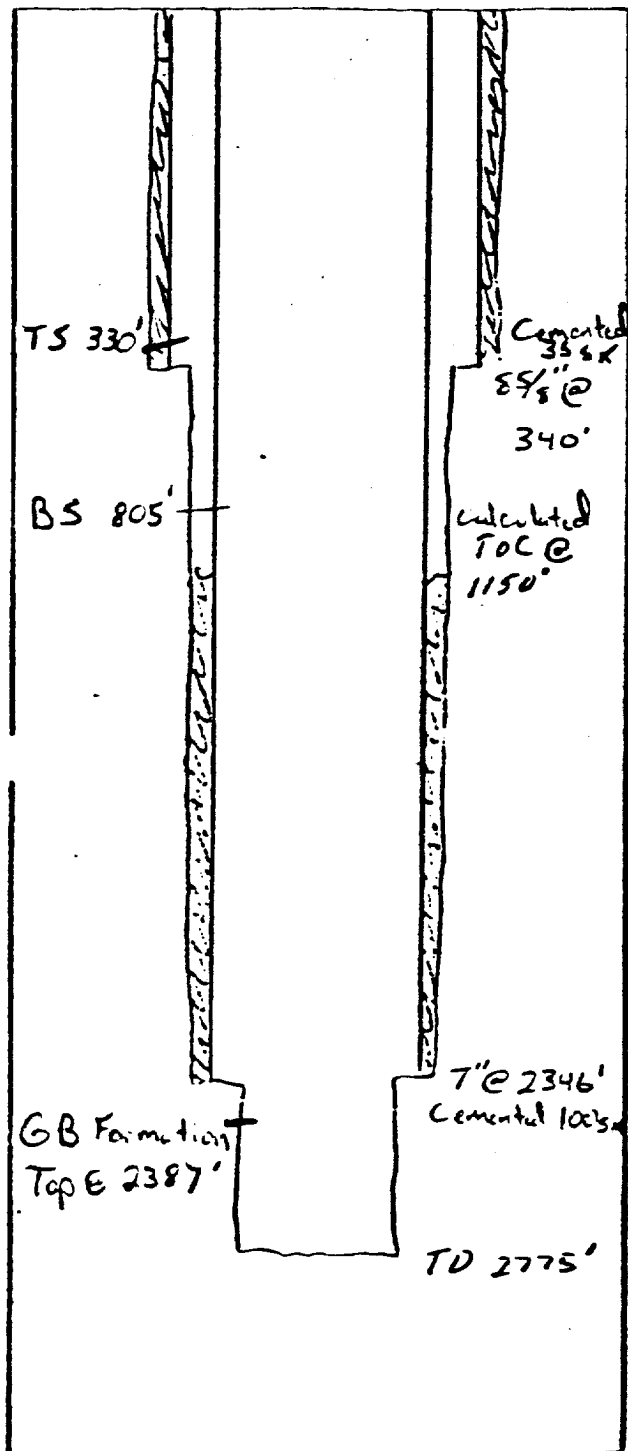
990' FWL & 330' FSL
FOOTAGE LOCATION

4
SECTION

18S
TOWNSHIP

29E
RANGE

Schematic



Completion Date 12/28/39

Plugging Date

Deepest Depth Drilled 2775

Surface Casing

Size 8-5/8 Set At 340 with 35 sxs

Left in Hole

Size Hole 10"

Intermediate Casing

Size Set At with sxs

Left in Hole

Size Hole

Production Casing

Size 7 Set At 2346 with 100 sxs

Left in Hole

Size Hole 8"

Liner

Size From

Cemented with

Size Hole

Left in Hole

Cement Plugs

Depth Amount At

NO RECORD