

UNITED STATES  
DEPARTMENT OF THE INTERIOR  
BUREAU OF LAND MANAGEMENTFORM APPROVED  
OMB No. 1004-0135  
Expires November 30, 2000**SUNDRY NOTICES AND REPORTS ON WELLS**  
*Do not use this form for proposals to drill or to re-enter an abandoned well. Use Form 3160-3 (APD) for such proposals.***SUBMIT IN TRIPLICATE - Other instructions on reverse side**

## 1. Type of Well

☒ Oil Well ☐ Gas Well ☐ Other

## 2. Name of Operator

Yates Petroleum Corporation

## 3a. Address

105 S. 4th St. - Artesia, NM 88210

## 3b. Phone No. (include area code)

505-748-1471

## 4. Location of Well (Footage, Sec., T., R., M., or Survey Description)

990' FNL &amp; 330' FEL of Section 10-T18S-R29E (Unit A, NENE)

## 5. Lease Serial No.

LC-062072

## 6. If Indian, Allottee or Tribe Name

## 7. If Unit or CA/Agreement, Name and/or No.

## 8. Well Name and No.

WLHU G4S Unit Tract 17-8

## 9. API Well No.

30-015-03375

## 10. Field and Pool, or Exploratory Area

Loco Hills-Q-GB-SA

## 11. County or Parish, State

Eddy Co., NM

## 12. CHECK APPROPRIATE BOX(ES) TO INDICATE NATURE OF NOTICE, REPORT, OR OTHER DATA

## TYPE OF SUBMISSION

## TYPE OF ACTION

☒ Notice of Intent☐ Subsequent Report☐ Final Abandonment Notice☐ Acidize☐ Alter Casing☐ Casing Repair☐ Change Plans☐ Convert to Injection☐ Deepen☐ Fracture Treat☐ New Construction☒ Plug and Abandon☐ Plug Back☐ Production (Start/Resume)☐ Reclamation☐ Recomplete☐ Temporarily Abandon☐ Water Disposal☐ Water Shut-Off☐ Well Integrity☐ Other

13. Describe Proposed or Completed Operation (clearly state all pertinent details, including estimated starting date of any proposed work and approximate duration thereof. If the proposal is to deepen directionally or recomple horizontally, give subsurface locations and measured and true vertical depths of all pertinent markers and zones. Attach the Bond under which the work will be performed or provide the Bond No. on file with BLM/BIA. Required subsequent reports shall be filed within 30 days following completion of the involved operations. If the operation results in a multiple completion or recomple in a new interval, a Form 3160-4 shall be filed once testing has been completed. Final Abandonment Notices shall be filed only after all requirements, including reclamation, have been completed, and the operator has determined that the site is ready for final inspection.)

Propose to plug and abandon as follows:

1. TIH with wireline set CIBP and set CIBP at 2480'. TOOH. TIH with tubing and tag CIBP. Load hole with plugging mud. Spot a 30 sack Class C cement plug from 2480-2350'. TOOH with tubing.
  2. Perforate 7" casing with 6 holes at 1030' and 6 holes at 480'.
  3. TIH with wireline set cement retainer and set retainer at 930'. TOOH. TIH with tubing and sting into retainer. Establish an injection rate. Squeeze with 75 sacks Class C cement. Leave 35' of cement on top of retainer. TOOH with tubing.
  4. TIH with wireline set cement retainer and set retainer at 380'. TOOH. TIH with tubing. Sting into retainer and establish circulation. Squeeze with 60 sacks Class C cement from 480-380'. Leave 10 sacks of cement on top of retainer. TOOH with tubing.
  5. Spot a 15 sack Class C cement plug at surface. - 50' plug
  6. Install regulation abandonment marker.
- NOTIFY BLM-CARLSBAD (505-234-5909) AND OCD-ARTESIA (505-748-1283) 24 HOURS PRIOR TO COMMENCING

## 14. I hereby certify that the foregoing is true and correct PLUGGING OPERATIONS

Name (Printed/Typed)

Rusty Klein

Title

Operations Technician

Signature

Date

July 20, 2001

THIS SPACE FOR FEDERAL OR STATE OFFICE USE

Approved by

Conditions of approval are hereby approved by the State Engineer or certify that the applicant holds legal or equitable title to those rights in the subject lease which would entitle the applicant to conduct operations thereon.

Title

Office

APPROVED

(ORIG. SGD.) LES BABYAK

JUL 30 2001

LES BABYAK

PETROLEUM ENGINEER

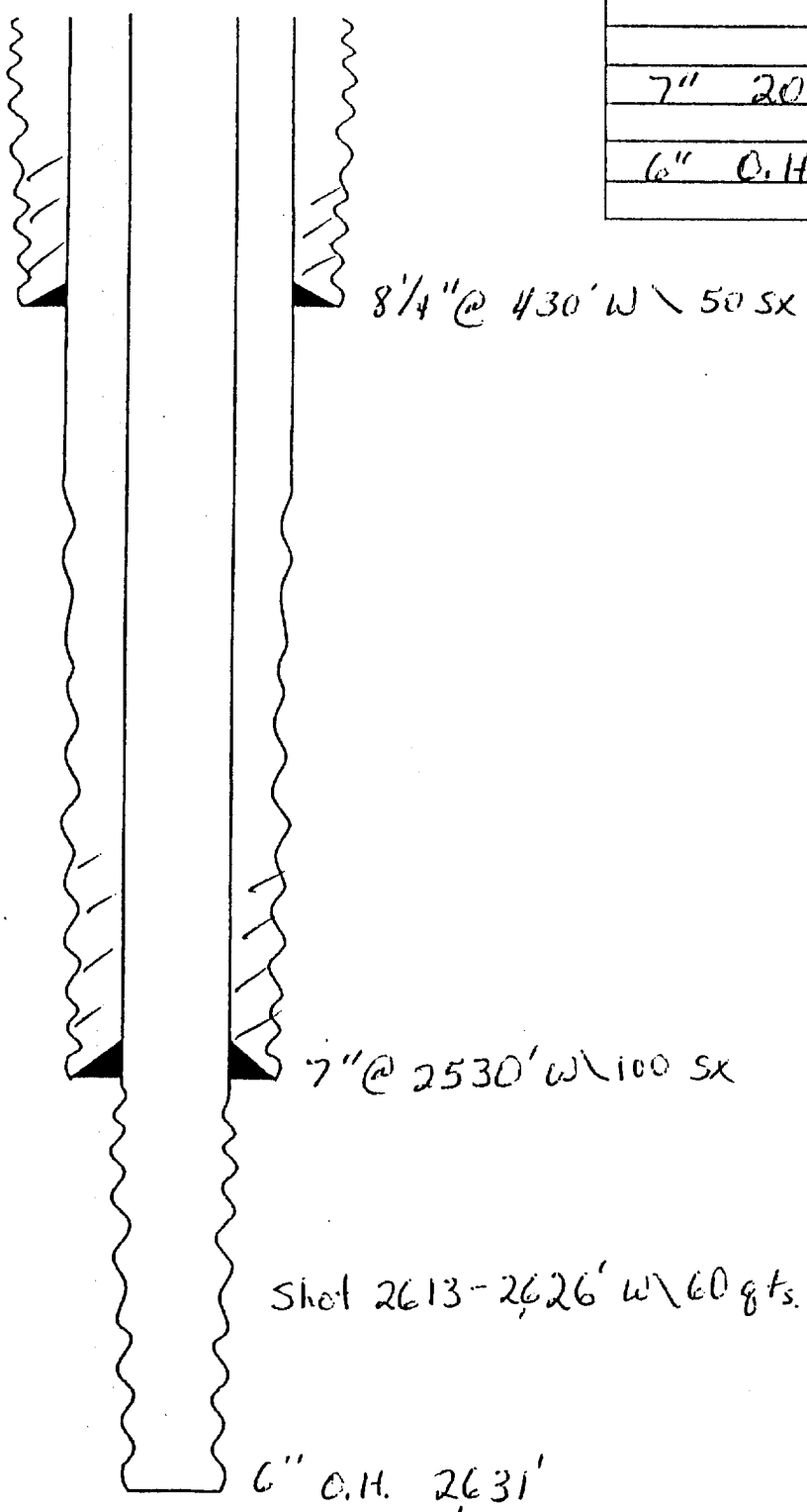
BUREAU OF NIGHT  
HOSPITAL OFFICE

2001 JUL 24 AM 8:28

RECEIVED

WELLNAME: Tract 17A well No 8 FIELD: WLHLL  
 LOCATION: A, 990' FNL, 330' FEL, Sec 10, T18S, R29E Eddy Co NM.  
 GL: \_\_\_\_\_ ZERO: \_\_\_\_\_ AGL: \_\_\_\_\_ KB: \_\_\_\_\_  
 SPUD DATE: 3-28-40 COMPLETION DATE: 4-28-40  
 COMMENTS: \_\_\_\_\_

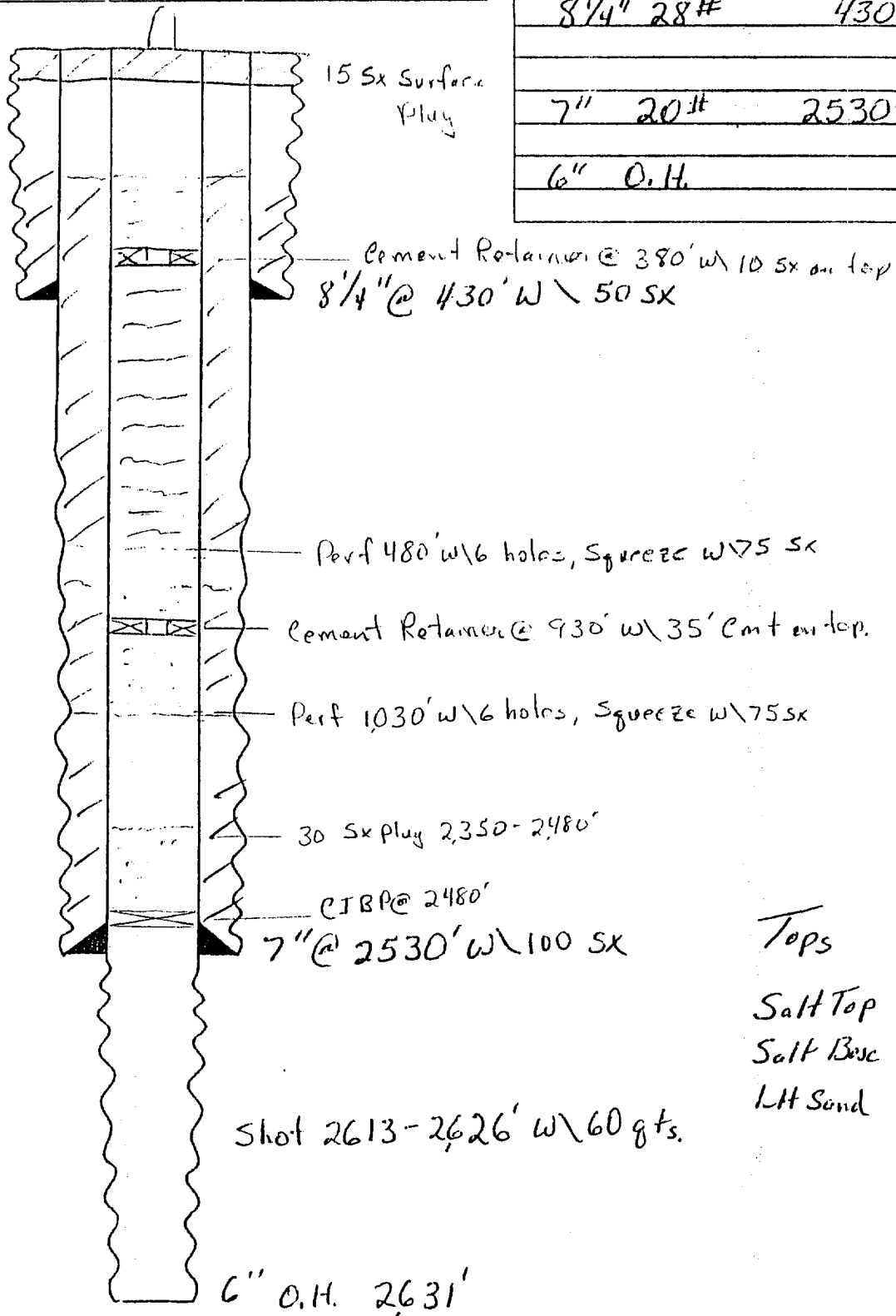
CASING PROGRAM	
SIZE/WT/GR/CONN	DEPTH SET
8 1/4" 28#	430'
7" 20#	2530'
6" O.H.	2631'



Tops  
 Salt Top 418'  
 Salt Base 880'  
 LH Sand 2616'

WELL NAME: Tract 17A well No 8 FIELD: W L H  
 LOCATION: A, 990' FNL / 330' FEL, Sec 10, T18S, R29E Eddy Co NM.  
 GL: \_\_\_\_\_ ZERO: \_\_\_\_\_ AGL: \_\_\_\_\_ KB: \_\_\_\_\_  
 SPUD DATE: 3-28-40 COMPLETION DATE: 4-28-40  
 COMMENTS: \_\_\_\_\_

CASING PROGRAM		
SIZE	WT/GR/CONN	DEPTH SET
8 1/4"	28#	430'
7"	20#	2530'
6"	O.H.	2631'



Tops  
 Salt Top 418'  
 Salt Base 880'  
 LH Sand 2616'