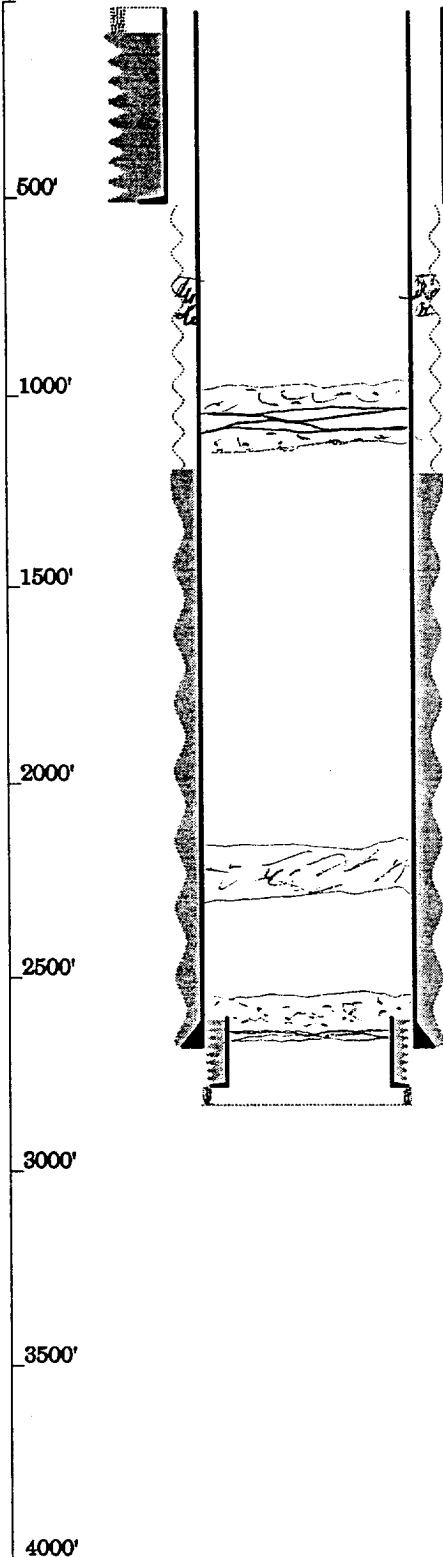


West Loco Hills Unit #1-5

Unit K, 1650' FSL 1650' FWL

Sec. 7-T18S-R30E NMPM

KB=8'
GL



Max TOC is @ Surface

8 5/8" @ 500' w/ 50sx
10" hole to 500'

Water coming in casing at 784'

toc is not recorded (max top is approx 550')

7 7/8" hole to 2690'
7 @ 2690' w/ 100sx
4 1/2" Liner from 2620'-2796' cemented by squeezing from the top.
TD 2832'