

UNITED STATES N.M. Oil Conservation
DEPARTMENT OF THE INTERIOR
BUREAU OF LAND MANAGEMENT

SUBMIT IN TRIPLICATE
(Other Instructions on
reverse side)

Budget Bureau No. 1004-0135
Expires August 31, 1985

Ariesia, NM 88240

5. LEASE DESIGNATION AND SERIAL NO.
NM 98121

SUNDRY NOTICES AND REPORTS ON WELLS

(Do not use this form for proposals to drill or to deepen or plug back to a different reservoir.
Use "APPLICATION FOR PERMIT - " for such proposals.)

1. OIL ☐ GAS ☐ OTHER ☐ WIW

2. NAME OF OPERATOR
The Wiser Oil Company

3. ADDRESS OF OPERATOR
P.O. Box 2568 Hobbs, New Mexico 88240 (505) 392-9799

4. LOCATION OF WELL (Report location clearly and in accordance with any State requirements.
See also space 17 below.)
At surface

660' FNL & 1980' FEL
Unit B

6. IF INDIAN, ALLOTTEE OR TRIBE NAME

7. UNIT AGREEMENT NAME
Skelly Unit

8. WELL NO.
85

9. API WELL NO.
30-015-05422

10. FIELD AND POOL, OR WILDCAT
Grayburg Jackson 7-Rivers-QN-GB-SA

11. SEC., T., R., M., OR BLK. AND
SURVEY OR AREA
Sec. 27-T17S-R31E

14. PERMIT NO.

15. ELEVATIONS (Show whether DF, RT, GR, etc.)
3824' DF

12. COUNTY OR PARISH
Eddy County

13. STATE
NM

16. Check Appropriate Box to indicate Nature of Notice, Report, or Other Data

NOTICE OF INTENTION TO:

TEST WATER SHUT OFF ☐ PULL OR ALTER CASING ☐
FRACTURE TREAT ☐ MULTIPLE COMPLETE ☐
SHOOT OR ACIDIZE ☐ ABANDON* ☐
REPAIR WELL ☐ CHANGE PLANS ☐
(Other) ☐

SUBSEQUENT REPORT OF:

WATER SHUT-OFF ☐ REPAIRING WELL ☒
FRACTURE TREATMENT ☐ ALTERING CASING ☐
SHOOTING OR ACIDIZING ☐ ABANDONMENT * ☐
(Other) ☐
(Note: Report results of multiple completion on Well
Completion or Recompletion Report and Log form.)

17. DESCRIBE PROPOSED OR COMPLETED OPERATIONS: (Clearly state all pertinent details, and give pertinent dates, including estimated date of starting any proposed work. If well is directionally drilled, give subsurface locations and measured and true vertical depths for all markers and zones pertinent to his work.)

08/26/02 MIRU Eunice Well Service. ND WH. RU BOP. POH w/2-1/16" IPC tbg. LD AD-1 pkr. RIH w/4-3/4" bit, bit sub & 2-3/8" tbg. Tag @ 3000'. POH w/2-3/8" tbg. LD tools.
08/27/02 RU Computalog WL. Ran Compensated Neutron log 12600'-1600'. Perf. csg. @ 1500' w/4 SPF. Set RBP @ 2300'. Test holes @ 1500' 1/2 bpm @ 2000#. Spot 3 sks. sand on RBP. Perf. csg. @ 802' w/2 SPF. Test holes @ 802'. Displaced w/ 30 bbls FW. Circulate 1 bpm @ 450#. RD WL.
08/28/02 RIH w/5-1/2" cement retainer on 2-3/8" tbg. to 1475'. RU BJ Service. Test tbg. to 3500#. Broke circulation. Circulate hole clean. Set cement retainer. Pump 50 sks. Class "C" neat w/25# CaCl 1 bpm @ 2450#. Communicated f/holes @ 1500' upward thru 802'. Total slurry 11.7 bbls. Stung out of retainer. POH w/2-3/8" tbg. LD setting tool. RIH w/5 jts. 2-3/8" tbg. Pump 200 sks. Class "C" neat w/75# CaCl 1.5 bpm @ 300#. Total slurry 47.7 bbls. Hesitate 20 min. & squeeze 1 bbl. @ 390#. Hesitate 30 min. Squeeze 1 bbl. @ 880#. Hesitate 30 min. Squeeze 1 1/4 bbls. @ 990#. SI RD BJ.
08/29/02 Tbg. stuck in hole - 115 jts. 2-3/8". RU ABC Rental. RIH w/4-1/2" cutrite shoe on 4-1/2" wash pipe. Tag cement @ 32'. Wash over tail pipe to 93'. POH w/wash pipe & shoe.
08/30/02 RIH w/4-1/2" cutrite shoe on 4-1/2" wash pipe. Tag cement @ 93'. Washed over to 131' & fell thru. Circulate hole clean. POH w/wash pipe & shoe. RIH w/2-3/8" overshot. Could not catch fish. RIH w/2-3/8" spear. Could not catch fish. RIH w/4-1/2" shoe T-Dog & 1 jt. 4-1/2" wash pipe on 2-3/8" tbg. Caught fish @ 698'. POH w/tbg & tools.
08/31/02 RIH w/2-3/8" spear, DC's & 2-3/8" tbg. Caught fish @ 700'. POH w/tbg. & tools. Had 2 jts. 2-3/8" tbg. on spear. RIH w/4-1/2" shoe, wash pipe & 2-3/8" tbg. Tag cement @ 725'. Wash over to 750'. POH w/tbg. & tools. RIH w/2-3/8" overshot & DC's on 2-3/8" tbg. Caught fish @ 730'. POH w/tbg. & tools. 2 jts. 2-3/8" tbg. on overshot. RIH w/4-3/4" bit & DC's on 2-3/8" tbg. Tag cement @ 750'. Drill to 1475'. Tag cement retainer. Drilled 1' on cement retainer.
09/03/02 Tag retainer @ 1476'. Drill thru retainer & cement to 1512'. RIH to 2000'. Circulate hole clean. POH w/tbg. & tools. LD bit. RIH w/2-3/8" x 5-1/2" AD-1 pkr. on 2-3/8" tbg. to 2000'. Set pkr. Test

18. I hereby certify that the foregoing is true and correct.

SIGNED Mary Jo Turner TITLE Production Tech II

(This space for Federal or State office use)

APPROVED BY _____
CONDITIONS OF APPROVAL, IF ANY:

TITLE _____

ACCEPTED FOR RECORD

DATE October 11, 2002

NOV 26 2002

DATE

ALEXIS C. SWOBODA
PETROLEUM ENGINEER

*See Instruction On Reverse Side

UNITED STATES
DEPARTMENT OF THE INTERIOR
BUREAU OF LAND MANAGEMENT

SUBMIT IN TRIPLICATE *
(Other Instructions on
reverse side)

Budget Bureau No. 1004-0135
Expires August 31, 1985

SUNDRY NOTICES AND REPORTS ON WELLS

(Do not use this form for proposals to drill or to deepen or plug back to a different reservoir.
Use "APPLICATION FOR PERMIT - " for such proposals.)

1. OIL WELL ☐ GAS WELL ☐ OTHER ☐ WIW

2. NAME OF OPERATOR
The Wiser Oil Company

3. ADDRESS OF OPERATOR
P.O. Box 2568 Hobbs, New Mexico 88240 (505) 392-9797

4. LOCATION OF WELL (Report location clearly and in accordance with any State requirements.
See also space 17 below.)
At surface

660' FNL & 1980' FEL
Unit B

14. PERMIT NO.

15. ELEVATIONS (Show whether DF, RT, GR, etc.)
3824' DF

5. LEASE DESIGNATION AND SERIAL NO.
NM 98121

6. IF INDIAN, ALLOTTEE OR TRIBE NAME

7. UNIT AGREEMENT NAME
Skelly Unit

8. WELL NO.
85

9. API WELL NO.
30-015-05422

10. FIELD AND POOL, OR WILDCAT
Grayburg Jackson 7-Rivers-QN-GB-SA

11. SEC., T., R., M., OR BLK. AND
SURVEY OR AREA
Sec. 27-T17S-R31E

12. COUNTY OR PARISH
Eddy County

13. STATE
NM

Check Appropriate Box to indicate Nature of Notice, Report, or Other Data

NOTICE OF INTENTION TO:

TEST WATER SHUT OFF ☐ PULL OR ALTER CASING ☐
FRACTURE TREAT ☐ MULTIPLE COMPLETE ☐
SHOOT OR ACIDIZE ☐ ABANDON* ☐
REPAIR WELL ☐ CHANGE PLANS ☐
(Other) ☐

SUBSEQUENT REPORT OF:

WATER SHUT-OFF ☐ REPAIRING WELL ☒
FRACTURE TREATMENT ☐ ALTERING CASING ☐
SHOOTING OR ACIDIZING ☐ ABANDONMENT * ☐
(Other) ☐
(Note: Report results of multiple completion on Well
Completion or Recompletion Report and Log form.)

17. DESCRIBE PROPOSED OR COMPLETED OPERATIONS: (Clearly state all pertinent details, and give pertinent dates, including estimated date of starting any proposed work. If well is directionally drilled, give subsurface locations and measured and true vertical depths for all markers and zones pertinent to his work.) *

(continued)

RBP to 500#. POH & set pkr. @ 1200'. Test csg. to 500#. POH & set pkr. @ 900'. Test to 500#. POH & set pkr. @ 770'. Csg. leaking thru squeeze hole @ 802' 1/2 bpm @ 500#. Test backside w/pkr. @ 770'. Test to 500#. POH w/tbg. LD pkr.
09/04/02 RD BOP. ND WH. NU csg. collar. RU BJ Service. Pump 100 sks. Class "C" w/2% CaCl to squeeze holes @ 802' 1 bpm @ 760#. Displaced w/11 bbls. water. Hesitate 15 min. squeeze 1 bbl. @ 790#. Hesitate 20 min. squeeze 1 bbl. @ 860#. Hesitate 30 min. squeeze 1/2 bbl. Squeeze @ 1600#. RD BJ. WOC.
09/05/02 ND cementing valve & 5-1/2" collar. NU WH. RU BOP. RIH w/4-3/4" bit & DC's on 2-3/8" tbg. Tag cement @ 512'. Drill to 698'. Circulate hole clean.
09/06/02 Tag cement @ 698'. Drill & fell out @ 807'. Tag fill @ 2200'. Wash to RBP @ 2300'. POH w/2-3/8" DC'. LD bit. RIH w/RBP retrieving head on 2-3/8" tbg. Catch RBP @ 2300'. Unset RBP. NU WH to flow well down overnight.
09/07/02 POH w/2-3/8" tbg. LD RBP. RIH w/4-3/4" bit & DC's on 2-3/8" tbg. Tag fill @ 2989'. Drill out to 3317'. POH w/2-3/8" tbg. LD DC's & bit.
09/09/02 RIH w/CIBP on 2-3/8" tbg. to 3300'. Set CIBP. POH. LD 2-3/8" work string & setting tool. RU Computalog WL & perforate Seven River f/2396'-98', 2408'-16', 21', 39'-42', 49', 50', 53', 56'-59', 83', 87', & 2517'-19' w/4 SPF. RD WL. RIH w/5-1/2" AD-1 pkr. on 2-1/16" IPC tbg. to 2300'. Set pkr. Test csg. to 500# for 30 min. Circulate 70 bbls. pkr. fluid. Could not reset pkr. POH w/2-1/16" tbg. & safety sub.
09/10/02 RIH w/5-1/2" AD-1 pkr. on 2-1/16" IPC tbg. to 2275'. Circulate 50 bbls. pkr. fluid. Set pkr. Test backside to 500#. RD BOP. NU WH. Left well injecting 100 BWPD @ 1000#. RDMO.

18. I hereby certify that the foregoing is true and correct.

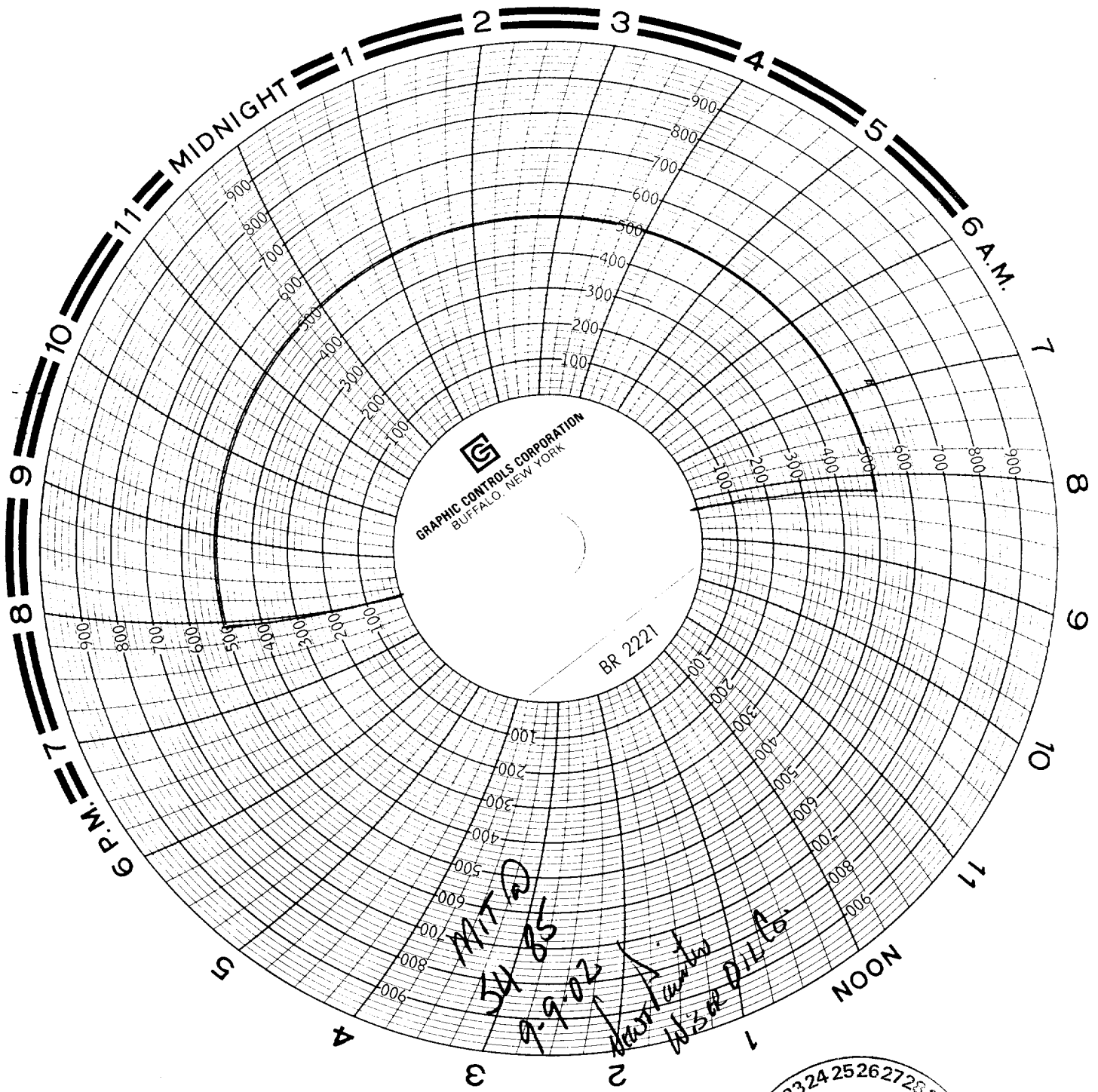
SIGNED Mary Jo Turner TITLE Production Tech II DATE October 11, 2002
Mary Jo Turner

(This space for Federal or State office use)

APPROVED BY _____ TITLE _____ DATE _____
CONDITIONS OF APPROVAL, IF ANY:

*See Instruction On Reverse Side

Title 18 U.S.C. Section 1001, makes it a crime for any person knowingly and willfully to make to any department or agency of the United States any false, fictitious or fraudulent statements or representations as to any matter within its jurisdiction.



With Jimmy
family stuff

RECEIVED
JAN 25 1975

RECEIVED