

NUMBER OF COPIES RECEIVED	
DISTRIBUTION	
SANTA FE	
FILE	
U.S.G.S.	
LAND OFFICE	
TRANSPORTER	OIL GAS
PRODUCTION OFFICE	
OPERATOR	

NEW MEXICO OIL CONSERVATION COMMISSION
Santa Fe, New Mexico

Form C-101
Revised (12/1/55)

NOTICE OF INTENTION TO DRILL

Notice must be given to the District Office of the Oil Conservation Commission and approval obtained before drilling or recompletion begins. If changes in the proposed plan are considered advisable, a copy of this notice showing such changes will be returned to the sender. Submit this notice in **QUINTUPLICATE**. One copy will be returned following approval. See additional instructions in Rules and Regulations of the Commission. If State Land submit 6 Copies Attach Form C- 128 in triplicate to first 3 copies of form C-101

Artesia, New Mexico

December 20, 1963

(Place)

(Date)

OIL CONSERVATION COMMISSION
SANTA FE, NEW MEXICO

Gentlemen:

You are hereby notified that it is our intention to commence the Drilling of a well to be known as
Newmont Oil Company

Tract 25

(Company, or Operator)

2

K

located **1650** feet from the **South** line and **1980** feet from the **West** line of Section **1**, T. **18-S**, R. **29-E**, NMPM.

(GIVE LOCATION FROM SECTION LINE)

West Loco Hills

Pool,

Eddy

County

B-5084-76

If State Land the Oil and Gas Lease is No.

If patented land the owner is.

Address.

We propose to drill well with drilling equipment as follows: **Rotary Rig**

The status of plugging bond is **Blanket**

Drilling Contractor **Pecos Drilling Company**
Artesia, New Mexico

We intend to complete this well in the **Loco Hills**

formation at an approximate depth of **2700'** feet.

CASING PROGRAM

We propose to use the following strings of Casing and to cement them as indicated:

Size of Hole	Size of Casing	Weight per Foot	New or Second Hand	Depth	Sacks Cement
11"	8 5/8"	28#	New	450'	50
6 1/2"	4 1/2"	9.5#	New	2700'	100

If changes in the above plans become advisable we will notify you immediately.

ADDITIONAL INFORMATION (If recompletion give full details of proposed plan of work.)

DEC 24 1963

Approved....., 19.....
Except as follows:

Sincerely yours,

Newmont Oil Company

ORIGINAL SIGNED BY (or Operator)
H. J. LEDBETTER

By.....

Position **District Superintendent**

Send Communications regarding well to

Name **Newmont Oil Company**

Rawley Building Artesia, New Mexico

OIL CONSERVATION COMMISSION

By *M. L. Armstrong*

O. C. C.
ARTESIA, OFFICE

DEC 23 1963

NUMBER OF COPIES RECEIVED	
DISTRIBUTION	
SANTA FE	
FILE	
U.S.G.S.	
LAND OFFICE	
TRANSPORTER	OIL
	GAS
PRODUCTION OFFICE	
OPERATOR	

NEW MEXICO OIL CONSERVATION COMMISSION
WELL LOCATION AND ACREAGE DEDICATION PLAT
 SEE INSTRUCTIONS FOR COMPLETING THIS FORM ON THE REVERSE SIDE

FORM C-128
 Revised 5/1/57

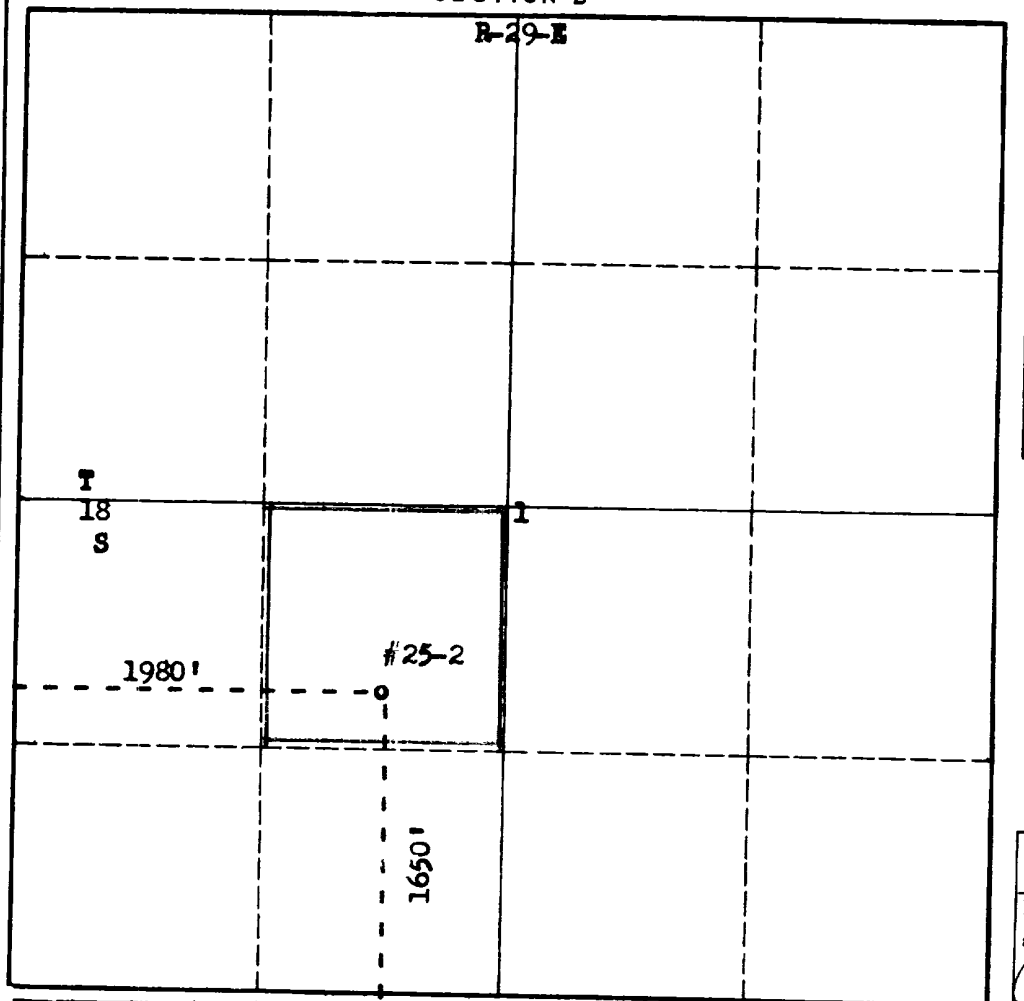
SECTION A

Operator Newmont Oil Company			Lease West Loco Hills Unit		Well No. 25-2
Unit Letter K	Section 1	Township T-18-S	Range R-29-E	County Eddy	
Actual Footage Location of Well: 1650 feet from the South line and 1980 feet from the West line					
Ground Level Elev. 3510	Producing Formation Loco Hills		Pool West Loco Hills	Dedicated Acreage: 40 Acres	

1. Is the Operator the only owner in the dedicated acreage outlined on the plat below? YES XX NO ____ . ("Owner" means the person who has the right to drill into and to produce from any pool and to appropriate the production either for himself or for himself and another. (65-3-29 (e) NMSA 1935 Comp.)
2. If the answer to question one is "no," have the interests of all the owners been consolidated by communitization agreement or otherwise? YES ____ NO ____ . If answer is "yes," Type of Consolidation _____
3. If the answer to question two is "no," list all the owners and their respective interests below:

Owner	Land Description

SECTION B



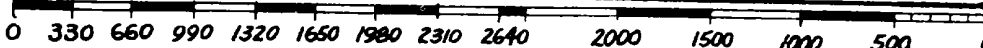
CERTIFICATION

I hereby certify that the information in SECTION A above is true and complete to the best of my knowledge and belief.

Name	ORIGINAL SIGNED BY H. J. LEDBETTER
Position	District Superintendent
Company	Newmont Oil Company
Date	December 20, 1963

I hereby certify that the well location shown on the plat in SECTION B was plotted from field notes of actual surveys made by me or under my supervision, and that the same is true and correct to the best of my knowledge and belief.

Date Surveyed	December 11, 1963
Registered Professional Engineer and/or Land Surveyor	
<i>James H. Lewis</i>	
Certificate No.	512



INSTRUCTIONS FOR COMPLETION OF FORM C-128

1. Operator shall furnish and certify to the information called for in Section A.
2. Operator shall outline the dedicated acreage for *both* oil and gas wells on the plat in Section B.
3. A registered professional engineer or land surveyor registered in the State of New Mexico or approved by the Commission shall show on the plat the location of the well and certify this information in the space provided.
4. All distances shown on the plat must be from the outer boundaries of the Section.
5. If additional space is needed for listing owners and their respective interests as required in question 3 of Section A, please use space below.

30-015-10090

1/17/64

Jane Wells

Maustiloy

duel space