

June 10, 1963

Leonard Oil Company  
P. O. Box 400  
Roswell, New Mexico

Gentlemen:

Please note we are returning your C-101 onewell #2, in unit--G  
of section 36-18S-29E, Eddy County, New Mexico, for additional  
information. Please show size hole to be drilled.

Very truly yours,

OIL CONSERVATION COMMISSION

M. L. Armstrong  
Supervisor, District #2

MLA/jw

NUMBER OF COPIES RECEIVED		6
DISTRIBUTION		
SANTA FE	FILE	1
U.S.G.S.	LAND OFFICE	2
TRANSPORTER	OIL GAS	1
PRODUCTION OFFICE	OPERATOR	1

NEW MEXICO OIL CONSERVATION COMMISSION  
Santa Fe, New Mexico

Form G-101  
Revised (12/1/55)

NOTICE OF INTENTION TO DRILL 20-015-10125

Notice must be given to the District Office of the Oil Conservation Commission and approval obtained before drilling or recompletion begins. If changes in the proposed plan are considered advisable, a copy of this notice showing such changes will be returned to the sender. Submit this notice in QUINTUPPLICATE. One copy will be returned following approval. See additional instructions in Rules and Regulations of the Commission. If State Land submit 6 Copies Attach Form G-128 in triplicate to first 3 copies of form G-101

ROSWELL, NEW MEXICO

JUNE 6, 1963

(Place)

(Date)

OIL CONSERVATION COMMISSION  
SANTA FE, NEW MEXICO

Gentlemen:

You are hereby notified that it is our intention to commence the Drilling of a well to be known as  
**LEONARD OIL COMPANY**

(Company or Operator)

STATE E-1819

(Lease)

Well No. 2

G

The well is

located 1980 feet from the north line and 1980 feet from the east line of Section 36, T. 19S, R. 29E, NMPM.

(GIVE LOCATION FROM SECTION LINE) So. Leo. Grayburg Pool, Eddy County

E-1819

If State Land the Oil and Gas Lease is No.

If patented land the owner is

Address

We propose to drill well with drilling equipment as follows: Rotary

The status of plugging bond is Blanket

Drilling Contractor Technical Drilling Service  
Midland, Texas

We intend to complete this well in the Grayburg formation at an approximate depth of 3000' feet.

CASING PROGRAM

We propose to use the following strings of Casing and to cement them as indicated:

Size of Hole	Size of Casing	Weight per Foot	New or Second Hand	Depth	Sacks Cement
9"	7"	20#	Used	350	100
6 1/4"	4 1/2"	9.5#	New	3000	100

If changes in the above plans become advisable we will notify you immediately.

ADDITIONAL INFORMATION (If recompletion give full details of proposed plan of work.)

RECEIVED

JUN 12 1963

D. C. C.  
ARTESIA, OFFICE

Sincerely yours,

LEONARD OIL COMPANY

(Company or Operator)

By

Position GENERAL MANAGER

Send Communications regarding well to

Name LEONARD OIL COMPANY

Address BOX 400- ROSWELL, NEW MEXICO

Approved JUN 12 1963, 19.....  
Except as follows:

OIL CONSERVATION COMMISSION

By M. L. Armstrong

NUMBER OF COPIES RECEIVED	
DISTRIBUTION	
SANTA FE	
FILE	
U.S.G.S.	
LAND OFFICE	
TRANSPORTER	OIL GAS
PRORATION OFFICE	
OPERATOR	

**NEW MEXICO OIL CONSERVATION COMMISSION**  
**WELL LOCATION AND ACREAGE DEDICATION PLAT**  
 SEE INSTRUCTIONS FOR COMPLETING THIS FORM ON THE REVERSE SIDE

FORM C-128  
 Revised 5/1/57

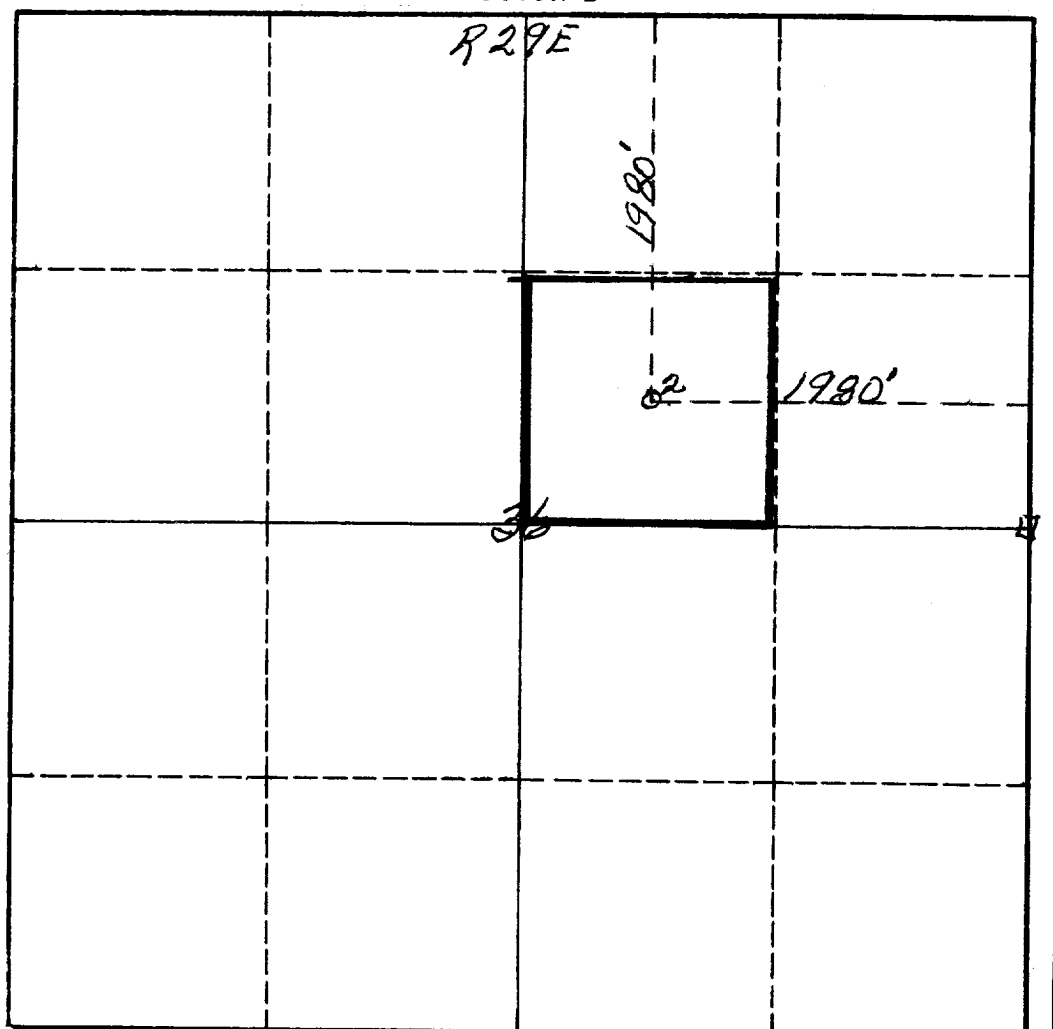
**SECTION A**

Operator <b>LEONARD OIL COMPANY</b>			Lease <b>STATE E-1819</b>		Well No. <b>2</b>
Unit Letter <b>G</b>	Section <b>36</b>	Township <b>18S</b>	Range <b>29E</b>	County <b>Eddy</b>	
Actual Footage Location of Well: <b>1980</b> feet from the <b>north</b> line and <b>1980</b> feet from the <b>east</b> line					
Ground Level Elev. <b>3440</b>	Producing Formation <b>31</b>	Pool <b>So. Leo Grayburg #2</b>		Dedicated Acreage: <b>40</b> Acres	

1. Is the Operator the only owner in the dedicated acreage outlined on the plat below? YES X NO \_\_\_\_ . ("Owner" means the person who has the right to drill into and to produce from any pool and to appropriate the production either for himself or for himself and another. (65-3-29 (e) NMSA 1935 Comp.)
2. If the answer to question one is "no," have the interests of all the owners been consolidated by communitization agreement or otherwise? YES \_\_\_\_ NO \_\_\_\_ . If answer is "yes," Type of Consolidation \_\_\_\_\_
3. If the answer to question two is "no," list all the owners and their respective interests below:

Owner	Land Description

**SECTION B**



**CERTIFICATION**

I hereby certify that the information in SECTION A above is true and complete to the best of my knowledge and belief.

Name	<i>Robert Hix</i>
Position	<b>General Manager</b>
Company	<b>Leonard Oil Company</b>
Date	<b>June 6, 1963</b>

I hereby certify that the well location shown on the plat in SECTION B was plotted from field notes of actual surveys made by me or under my supervision, and that the same is true and correct to the best of my knowledge and belief.

Date Surveyed	<b>June 7th 1963</b>
Registered Professional Engineer and/or Land Surveyor	<i>James H. Brown</i>

Certificate No. **542**

0 330 660 990 1320 1650 1980 2310 2640 2000 1500 1000 500 0

## INSTRUCTIONS FOR COMPLETION OF FORM C-128

1. Operator shall furnish and certify to the information called for in Section A.
2. Operator shall outline the dedicated acreage for *both* oil and gas wells on the plat in Section B.
3. A registered professional engineer or land surveyor registered in the State of New Mexico or approved by the Commission shall show on the plat the location of the well and certify this information in the space provided.
4. All distances shown on the plat must be from the outer boundaries of the Section.
5. If additional space is needed for listing owners and their respective interests as required in question 3 of Section A, please use space below.