

RECEIVED

NEW MEXICO OIL CONSERVATION COMMISSION

OCT 12 1978

O. C. C.  
ARTESIA, OFFICEForm C-101  
Revised 1-1-65

5A. Indicate Type of Lease

STATE ☒ FEE ☐

5. State Oil &amp; Gas Lease No.

L-1605

## APPLICATION FOR PERMIT TO DRILL, DEEPEN, OR PLUG BACK

7. Unit Agreement Name

8. Farm or Lease Name

State AR

9. Well No.

1

10. Field and Pool, or Wildcat

Wildcat

12. County

Eddy

19. Proposed Depth  
Cleanout to  
4500'

19A. Formation

Wolfcamp

20. Rotary or C.T.

Rotary

21. Elevations (Show whether DF, RT, etc.)

4083.6 GL

21A. Kind &amp; Status Plug. Bond

Statewide

21B. Drilling Contractor

LaRue &amp; Muncy

22. Approx. Date Work will start

10/25/78

23.

## Existing &amp; PROPOSED CASING AND CEMENT PROGRAM

SIZE OF HOLE	SIZE OF CASING	WEIGHT PER FOOT	SETTING DEPTH	SACKS OF CEMENT	EST. TOP
17"	13-3/8"	48 lb.	148	200	Surface
11"	8-5/8"	32 lb.	1816	700	Surface
7-7/8"	4-1/2"	10 1/2 lb.	4500	300	2000'

Propose to re-enter and clean out this old hole originally drilled by Sunray DX  
Oil Company. Test was P&A 3/01/64. Will clean out to approximately 4550',  
run logs and, if warranted, will run approximately 4500' of 4 1/2" casing and  
attempt completion. Original test was drilled with air through the zone of  
interest.

APPROVAL VALID  
FOR 90 DAYS UNLESS  
DRILLING COMMENCED,

EXPIRES 1-13-79

Re-enter  
10-13-78  
10-14-78  
10-15-78

IN ABOVE SPACE DESCRIBE PROPOSED PROGRAM: IF PROPOSAL IS TO DEEPEN OR PLUG BACK, GIVE DATA ON PRESENT PRODUCTIVE ZONE AND PROPOSED NEW PRODUCTIVE ZONE. GIVE BLOWOUT PREVENTER PROGRAM, IF ANY.

I hereby certify that the information above is true and complete to the best of my knowledge and belief.

Signed W. A. Gussert Title Operator Date 10/6/78

(This space for State Use)

APPROVED BY J. M. Cullen TITLE SUPERVISOR, DISTRICT II DATE OCT 13 1978

CONDITIONS OF APPROVAL, IF ANY:

**N . MEXICO OIL CONSERVATION COMMISSION  
WELL LOCATION AND ACREAGE DEDICATION PLAT**

Form C-102  
Supersedes C-128  
Effective 1-1-65

All distances must be from the outer boundaries of the Section.

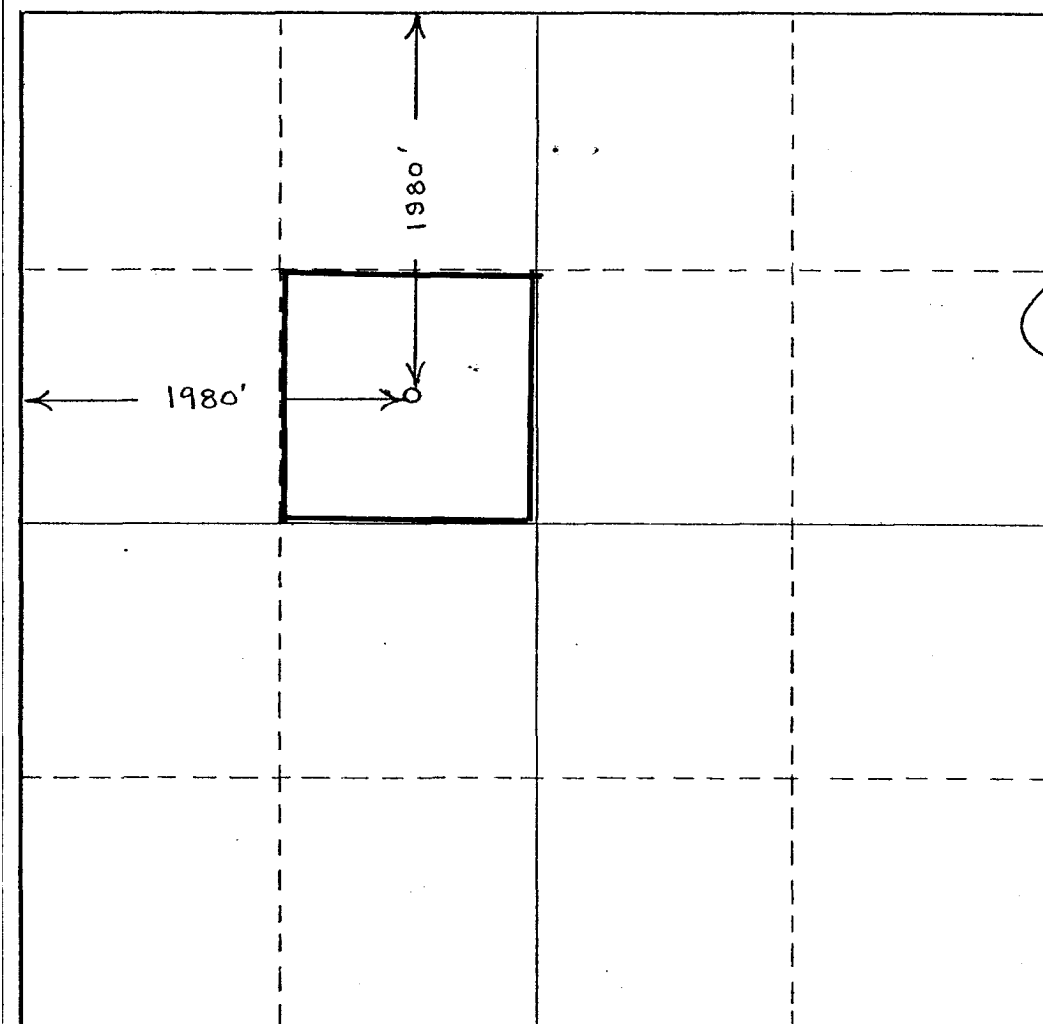
Operator <b>McClellan Oil Corporation</b>			Lease <b>State AR</b>		Well No. <b>1</b>
Unit Letter <b>F</b>	Section <b>31</b>	Township <b>18 South</b>	Range <b>23 East</b>	County <b>Eddy</b>	
Actual Footage Location of Well:					
<b>1980</b> feet from the <b>North</b> line and		<b>1980</b> feet from the <b>West</b> line			
Ground Level Elev: <b>4083.6</b>	Producing Formation <b>Wolfcamp</b>	Pool <b>Wildcat</b>		Dedicated Acreage: <b>40</b> Acres	

1. Outline the acreage dedicated to the subject well by colored pencil or hachure marks on the plat below.
2. If more than one lease is dedicated to the well, outline each and identify the ownership thereof (both as to working interest and royalty).
3. If more than one lease of different ownership is dedicated to the well, have the interests of all owners been consolidated by communitization, unitization, force-pooling, etc?

☐ Yes    ☐ No    If answer is "yes," type of consolidation \_\_\_\_\_

If answer is "no," list the owners and tract descriptions which have actually been consolidated. (Use reverse side of this form if necessary.) \_\_\_\_\_

No allowable will be assigned to the well until all interests have been consolidated (by communitization, unitization, forced-pooling, or otherwise) or until a non-standard unit, eliminating such interests, has been approved by the Commission.



**CERTIFICATION**

*I hereby certify that the information contained herein is true and complete to the best of my knowledge and belief.*

Name *Jack L. McClellan*  
 Position **President**  
 Company **McClellan Oil Corp.**  
 Date **October 6, 1978**

*I hereby certify that the well location shown on this plat was plotted from field notes of actual surveys made by me or under my supervision, and that the same is true and correct to the best of my knowledge and belief.*

Date Surveyed **2/07/1964**  
 Registered Professional Engineer and/or Land Surveyor

**John West**

Certificate No. \_\_\_\_\_

