

NUMBER OF COPIES RECEIVED <b>5</b>	
DISTRIBUTION	
SANTA FE	
FILE	
U.S.G.S.	
LAND OFFICE	
TRANSPORTER	
OIL GAS	
PRORATOR OFFICE	
OPERATOR	

**NEW MEXICO OIL CONSERVATION COMMISSION**  
**Santa Fe, New Mexico**

Form C-101  
Revised (12/1/55)

## NOTICE OF INTENTION TO DRILL

Notice must be given to the District Office of the Oil Conservation Commission and approval obtained before drilling or recompletion begins. If changes in the proposed plan are considered advisable, a copy of this notice showing such changes will be returned to the sender. Submit this notice in QUINTUPPLICATE. One copy will be returned following approval. See additional instructions in Rules and Regulations of the Commission. If State Land submit 6 Copies Attach Form C- 128 in triplicate to first 3 copies of form C-101

Artesia, New Mexico (Place) August 12, 1964 (Date)

OIL CONSERVATION COMMISSION  
SANTA FE, NEW MEXICO

Gentlemen:

You are hereby notified that it is our intention to commence the Drilling of a well to be known as

J. Grady Wright (Company or Operator)  
Lee (Lease), Well No. 1, in 1 (Unit). The well is located 1980 feet from the South line and 1980 feet from the East line of Section 24, T. 18S, R. 29E, NMPM. (GIVE LOCATION FROM SECTION LINE) Wild Cat Pool, Eddy County

If State Land the Oil and Gas Lease is No.

If patented land the owner is Ona M. Lee and Dwight M. Lee

Address Carlsbad, New Mexico

We propose to drill well with drilling equipment as follows: Test Queen,

Grayburg or Sananders with cable tools.

The status of plugging bond is Blanket Bond

Drilling Contractor C. E. Roach Drilling Company

200 Booker Building

Artesia, New Mexico

We intend to complete this well in the Queen, Grayburg or Sananders formation at an approximate depth of 2700 to 3300 feet.

### CASING PROGRAM

We propose to use the following strings of Casing and to cement them as indicated:

Size of Hole	Size of Casing	Weight per Foot	New or Second Hand	Depth	Sacks Cement
10"	8 5/8	20#	SH	350	50
8"	5 1/2	14#	SH	TD	100

If changes in the above plans become advisable we will notify you immediately.

ADDITIONAL INFORMATION (If recompletion give full details of proposed plan of work.)

RECEIVED

AUG 13 1964

O. C. C.  
ARTESIA, OFFICE

Sincerely yours,

J. Grady Wright (Company or Operator)

By J. Grady Wright

Position Owner

Send Communications regarding well to

Name Same

Address P. O. Box 565 Artesia, New Mexico

Approved AUG 14 1964, 19\_\_\_\_  
Except as follows:

OIL CONSERVATION COMMISSION

By M. L. Armstrong  
OIL AND GAS INSPECTOR

NUMBER OF COPIES RECEIVED	
DISTRIBUTION	
SANTA FE	
FILE	
U.S.G.S.	
LAND OFFICE	
TRANSPORTER	OIL GAS
PROBATION OFFICE	
OPERATOR	

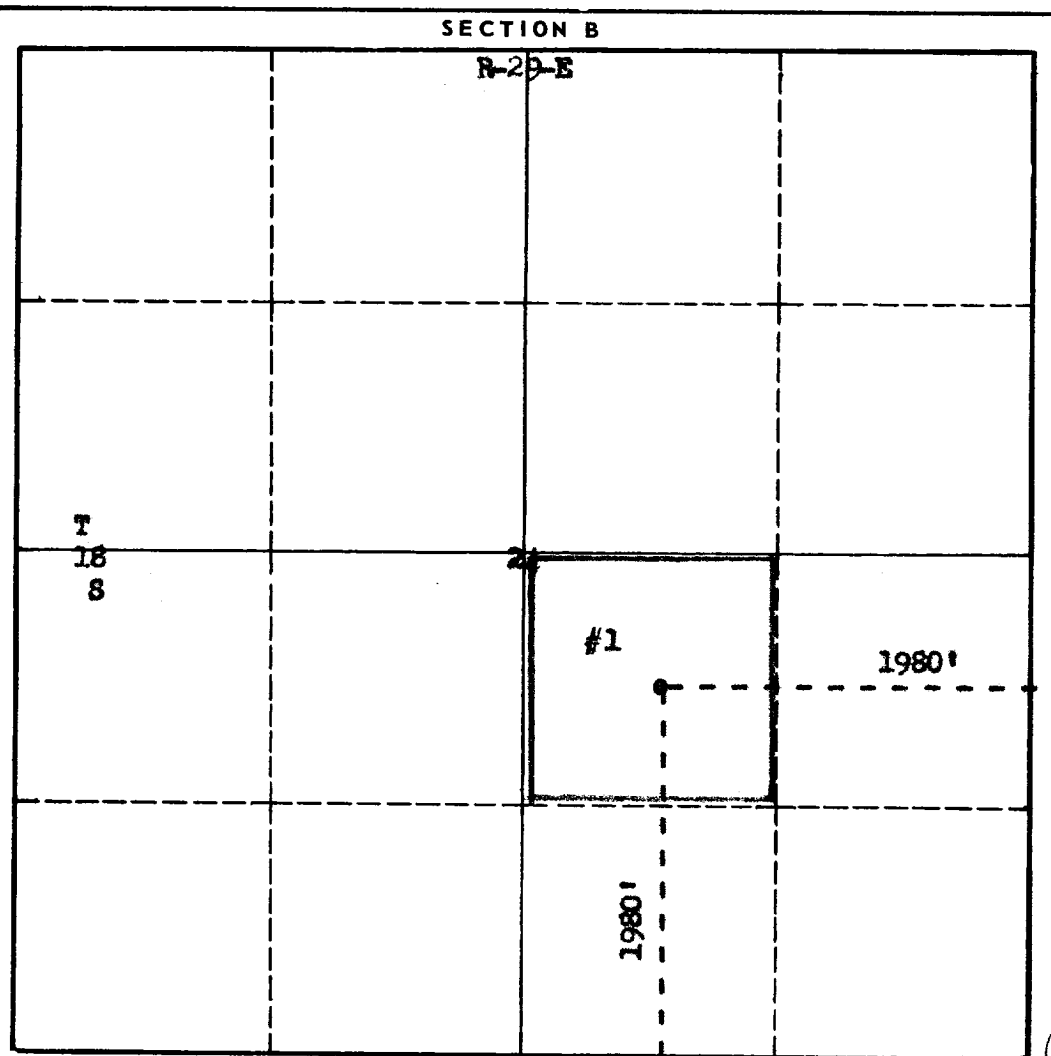
**NEW MEXICO OIL CONSERVATION COMMISSION**  
**WELL LOCATION AND ACREAGE DEDICATION PLAT**  
 SEE INSTRUCTIONS FOR COMPLETING THIS FORM ON THE REVERSE SIDE

FORM C-128  
 Revised 5/1/57

SECTION A					
Operator <b>J. Grady Wright</b>			Lease <b>Lee</b>		Well No. <b>1</b>
Unit Letter <b>J</b>	Section <b>24</b>	Township <b>T-18-S</b>	Range <b>R-29-E</b>	County <b>Eddy</b>	
Actual Footage Location of Well: <b>1980</b> feet from the <b>South</b> line and <b>1980</b> feet from the <b>East</b> line					
Ground Level Elev. <b>3454</b>	Producing Formation		Pool	Dedicated Acreage: <b>40</b> Acres	

1. Is the Operator the only owner in the dedicated acreage outlined on the plat below? YES \_\_\_\_\_ NO \_\_\_\_\_. ("Owner" means the person who has the right to drill into and to produce from any pool and to appropriate the production either for himself or for himself and another. (65-3-29 (e) NMSA 1935 Comp.)
2. If the answer to question one is "no," have the interests of all the owners been consolidated by communitization agreement or otherwise? YES \_\_\_\_\_ NO \_\_\_\_\_. If answer is "yes," Type of Consolidation \_\_\_\_\_
3. If the answer to question two is "no," list all the owners and their respective interests below:

Owner	Land Description
	<b>AUG 13 1964</b>
	<b>O. C. C.</b>
	<b>ARTESIA, OFFICE</b>



**CERTIFICATION**

I hereby certify that the information in SECTION A above is true and complete to the best of my knowledge and belief.

Name *J. Grady Wright*  
 Position *Owner*  
 Company \_\_\_\_\_  
 Date *8-13-64*

I hereby certify that the well location shown on the plat in SECTION B was plotted from field notes of actual surveys made by me or under my supervision, and that the same is true and correct to the best of my knowledge and belief.

Date Surveyed  
**August 11, 1964**  
 Registered Professional Engineer  
 and/or Land Surveyor

*James H. Brown*  
 Certificate No. **542**

### **INSTRUCTIONS FOR COMPLETION OF FORM C-128**

1. Operator shall furnish and certify to the information called for in Section A.
2. Operator shall outline the dedicated acreage for *both* oil and gas wells on the plat in Section B.
3. A registered professional engineer or land surveyor registered in the State of New Mexico or approved by the Commission shall show on the plat the location of the well and certify this information in the space provided.
4. All distances shown on the plat must be from the outer boundaries of the Section.
5. If additional space is needed for listing owners and their respective interests as required in question 3 of Section A, please use space below.