

NUMBER OF COPIES RECEIVED	
DISTRIBUTION	
SANTA FE	1
FILE	1
U.S.G.S.	1
LAND OFFICE	1
TRANSPORTER	1
OIL GAS	1
PROBATION OFFICE	1
OPERATOR	1

NEW MEXICO OIL CONSERVATION COMMISSION
Santa Fe, New Mexico

Form C-101
Revised (12/1/55)

NOTICE OF INTENTION TO DRILL

30-015-10449

Notice must be given to the District Office of the Oil Conservation Commission and approval obtained before drilling or recompletion begins. If changes in the proposed plan are considered advisable, a copy of this notice showing such changes will be returned to the sender. Submit this notice in QUINTUPLICATE. One copy will be returned following approval. See additional instructions in Rules and Regulations of the Commission. If State Land submit 6 Copies Attach Form C-128 in triplicate to first 3 copies of form C-101

Artesia, New Mexico

(Place)

August 22, 1964

(Date)

OIL CONSERVATION COMMISSION
SANTA FE, NEW MEXICO

Gentlemen:

You are hereby notified that it is our intention to commence the Drilling of a well to be known as

Harvey E. Yates

(Company, or Operator)

Fulton, Callier State

(Lease)

, Well No. 2, in 0 (Unit) The well is

located 1900 feet from the East line and 640 feet from the South line of Section 1, T. 18S, R. 28E, NMPM.

(GIVE LOCATION FROM SECTION LINE) Lone Hills Pool, City County

If State Land the Oil and Gas Lease is No. E-1204

If patented land the owner is

Address

We propose to drill well with drilling equipment as follows: Cable tools

The status of plugging bond is National Wide

Drilling Contractor Harvey E. Yates

We intend to complete this well in the Grayburg or San Andres formation at an approximate depth of 3500. Not to exceed 4500 feet.

CASING PROGRAM

We propose to use the following strings of Casing and to cement them as indicated:

Size of Hole	Size of Casing	Weight per Foot	New or Second Hand	Depth	Sacks Cement
10"	8"	24.7	Used	500'	50
8"	4 1/2 or 5 1/2	11.6 or 15	New	T.D.	100

If changes in the above plans become advisable we will notify you immediately.

ADDITIONAL INFORMATION (If recompletion give full details of proposed plan of work.)

RECEIVED

AUG 25 1964

O. C. C.

ARTESIA, OFFICE

Sincerely yours,

HARVEY E. YATES

(Company or Operator)

By James O. Monroe

Drig Supt.

Position

Send Communications regarding well to

Harvey E. Yates

Name

Address 305 Carper Bldg., Artesia, N.M.

Approved AUG 25 1964, 19
Except as follows:

OIL CONSERVATION COMMISSION

By M. L. Armstrong
Oil and Gas Inspector

NUMBER OF COPIES RECEIVED	
DISTRIBUTION	
SANTA FE	
FILE	
U.S.G.S.	
LAND OFFICE	
TRANSPORTER	OIL GAS
PRODUCTION OFFICE	
OPERATOR	

NEW MEXICO OIL CONSERVATION COMMISSION
WELL LOCATION AND ACREAGE DEDICATION PLAT
 SEE INSTRUCTIONS FOR COMPLETING THIS FORM ON THE REVERSE SIDE

FORM C-128
 Revised 5/1/57

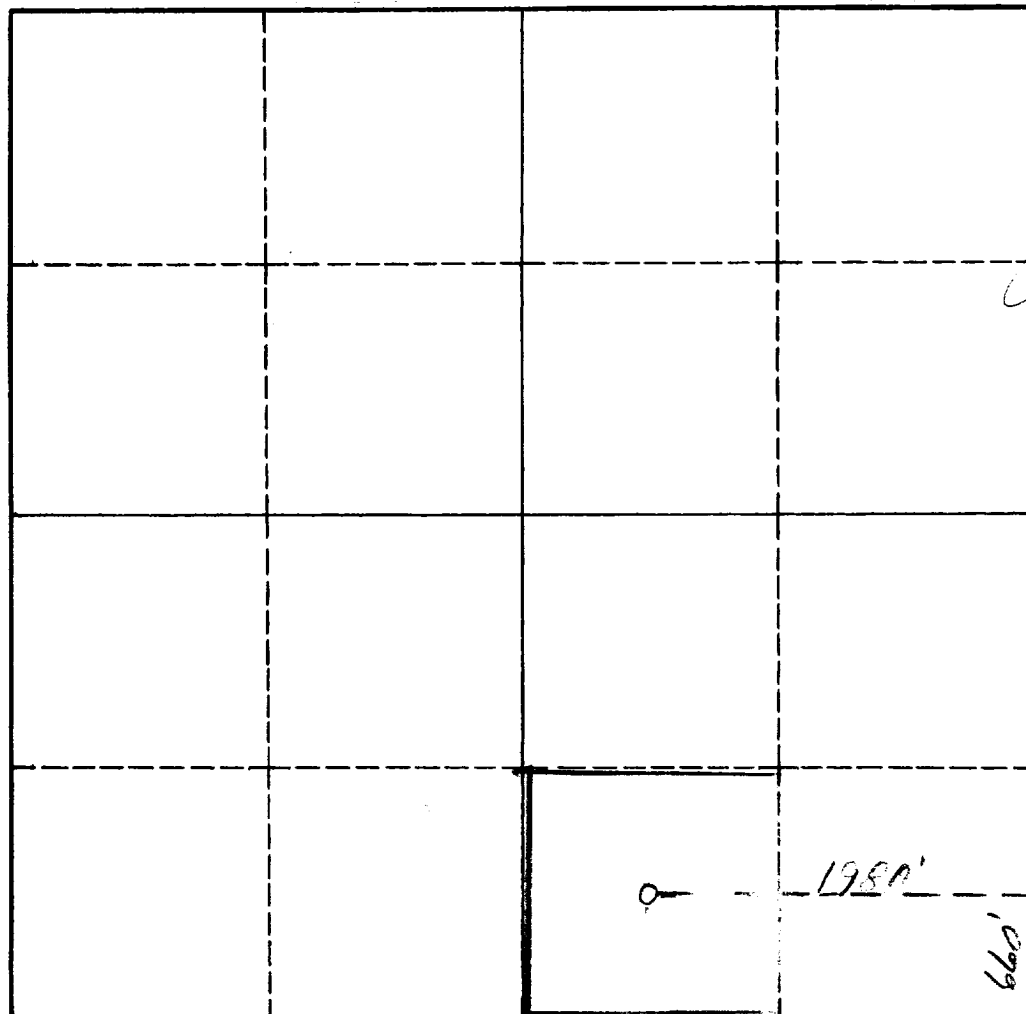
SECTION A

Operator Harvey E. Yates		Lease Fulton, Collier State		Well No. 2
Unit Letter 0	Section 1	Township 18S	Range 20E	County Elddy
Actual Footage Location of Well: 1980 feet from the East line and 660 feet from the South line				
Ground Level Elev.	Producing Formation Crayburg		Pool Leas Hills	Dedicated Acreage: 40 Acres

1. Is the Operator the only owner in the dedicated acreage outlined on the plat below? YES ☒ NO ____ . ("Owner" means the person who has the right to drill into and to produce from any pool and to appropriate the production either for himself or for himself and another. (65-3-29 (e) NMSA 1935 Comp.)
2. If the answer to question one is "no," have the interests of all the owners been consolidated by communitization agreement or otherwise? YES ____ NO ____ . If answer is "yes," Type of Consolidation **RECEIVED**
3. If the answer to question two is "no," list all the owners and their respective interests below:

Owner	Land Description AUG 25 1964
	O. C. C.
	ARTESIA, OFFICE

SECTION B



CERTIFICATION

I hereby certify that the information in SECTION A above is true and complete to the best of my knowledge and belief.

Name <i>James D. Menise</i>
Position Gen. Supt.
Company Harvey E. Yates
Date August 22, 1964

I hereby certify that the well location shown on the plat in SECTION B was plotted from field notes of actual surveys made by me or under my supervision, and that the same is true and correct to the best of my knowledge and belief.

Date Surveyed August 22, 1964
Registered Professional Engineer and/or Land Surveyor <i>Harvey E. Yates</i>
Certificate No. 771

0 330 660 990 1320 1650 1980 2310 2640 2000 1500 1000 500 0

INSTRUCTIONS FOR COMPLETION OF FORM C-128

1. Operator shall furnish and certify to the information called for in Section A.
2. Operator shall outline the dedicated acreage for *both* oil and gas wells on the plat in Section B.
3. A registered professional engineer or land surveyor registered in the State of New Mexico or approved by the Commission shall show on the plat the location of the well and certify this information in the space provided.
4. All distances shown on the plat must be from the outer boundaries of the Section.
5. If additional space is needed for listing owners and their respective interests as required in question 3 of Section A, please use space below.