

30-015-10550

NEW MEXICO OIL CONSERVATION COMMISSION
WELL LOCATION AND ACREAGE DEDICATION PLAT

Form C-102
Supersedes C-128
Effective 1-1-65

All distances must be from the outer boundaries of the Section.

Operator Kewanee Oil Company			Lease Fanning "A" 2		Well No. No. 2
Unit Letter J	Section 13	Township 18 South	Range 26 East	County EDDY	
Actual Footage Location of Well: 2310 feet from the South line and 2310 feet from the East line					
Ground Level Elev. 3295	Producing Formation San Andres		Pool Atoka San Andres		Dedicated Acreage: 40 Acres

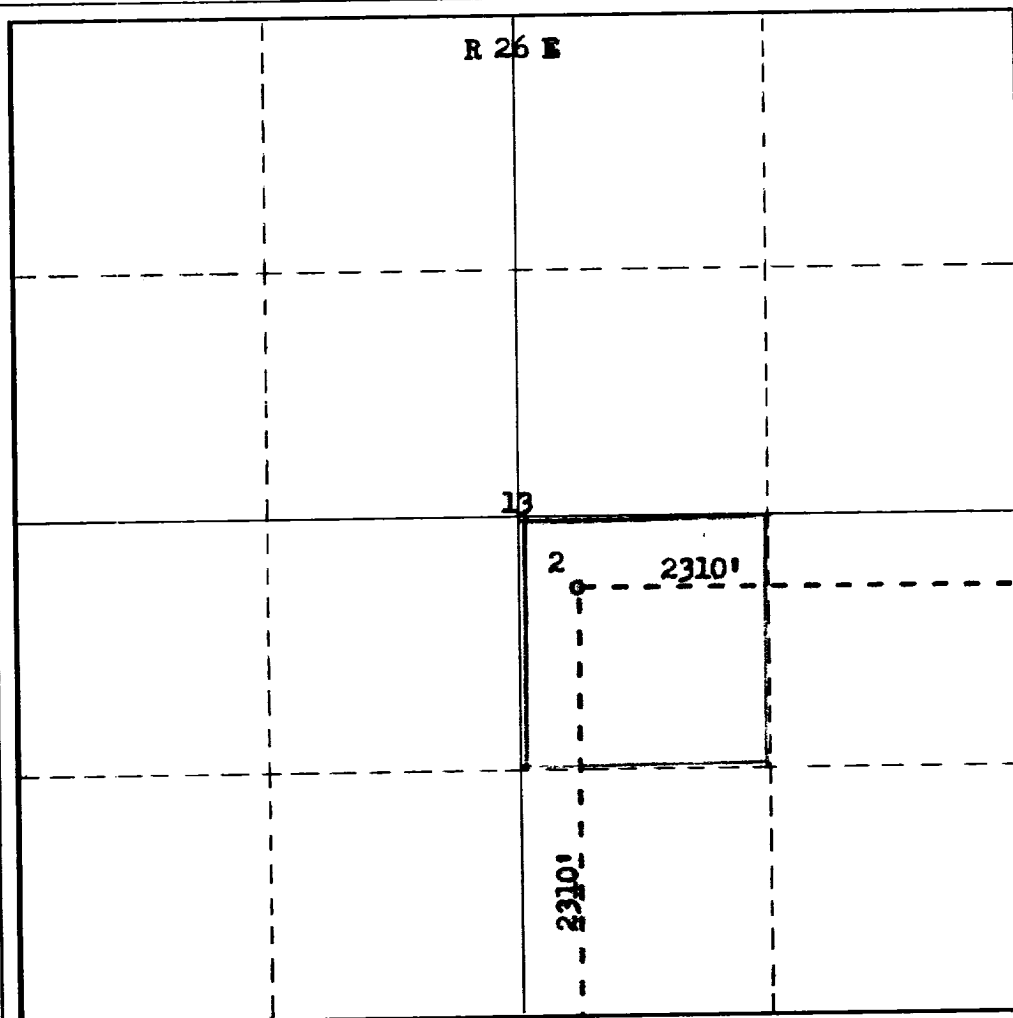
1. Outline the acreage dedicated to the subject well by colored pencil or hachure marks on the plat below.
2. If more than one lease is dedicated to the well, outline each and identify the ownership thereof (both as to working interest and royalty).
3. If more than one lease of different ownership is dedicated to the well, have the interests of all owners been consolidated by communitization, unitization, force-pooling, etc?

RECEIVED

☐ Yes ☐ No If answer is "yes," type of consolidation _____

If answer is "no," list the owners and tract descriptions which have actually been consolidated. (Use reverse side of this form if necessary.) _____

No allowable will be assigned to the well until all interests have been consolidated (by communitization, unitization, forced-pooling, or otherwise) or until a non-standard unit, eliminating such interests, has been approved by the Commission.



CERTIFICATION

I hereby certify that the information contained herein is true and complete to the best of my knowledge and belief.

E. F. Strickland

Name

E. F. Strickland

Position

Division Superintendent

Company

Kewanee Oil Company

Date

September 2, 1965

I hereby certify that the information shown on this plat was taken from field notes of actual surveys made by me or under my supervision, and that the same is true and correct to the best of my knowledge and belief.



Date Surveyed

August 31, 1965

Registered Professional Engineer and/or Land Surveyor

James H. Brown

Certificate No.

N.M.L.S. NO. 542

