

NEW MEXICO OIL CONSERVATION COMMISSION
WELL LOCATION AND ACREAGE DEDICATION PLAT

Form C-102
Supersedes C-128
Effective 1-1-65

All distances must be from the outer boundaries of the Section.

Operator STANDARD OIL COMPANY OF TEXAS			Lease <i>Paul TERRY ET AL UNIT</i> <i>Gay com</i>		Well No. 2
Unit Letter H	Section 15	Township 18 SOUTH	Range 26 EAST	County	
Actual Footage Location of Well: 1650 feet from the NORTH line and 990 feet from the EAST line <i>LEA Eddy</i>					
Ground Level Elev. To be reported later	Producing Formation Atoka (Penn.)		Pool <i>und. Atoka</i>	Dedicated Acreage: 380	
Acres					

1. Outline the acreage dedicated to the subject well by colored pencil or hachure marks on the plat below.
2. If more than one lease is dedicated to the well, outline each and identify the ownership thereof (both as to working interest and royalty).
3. If more than one lease of different ownership is dedicated to the well, have the interests of all owners been consolidated by communitization, unitization, force-pooling, etc?

☒ Yes ☐ No If answer is "yes," type of consolidation

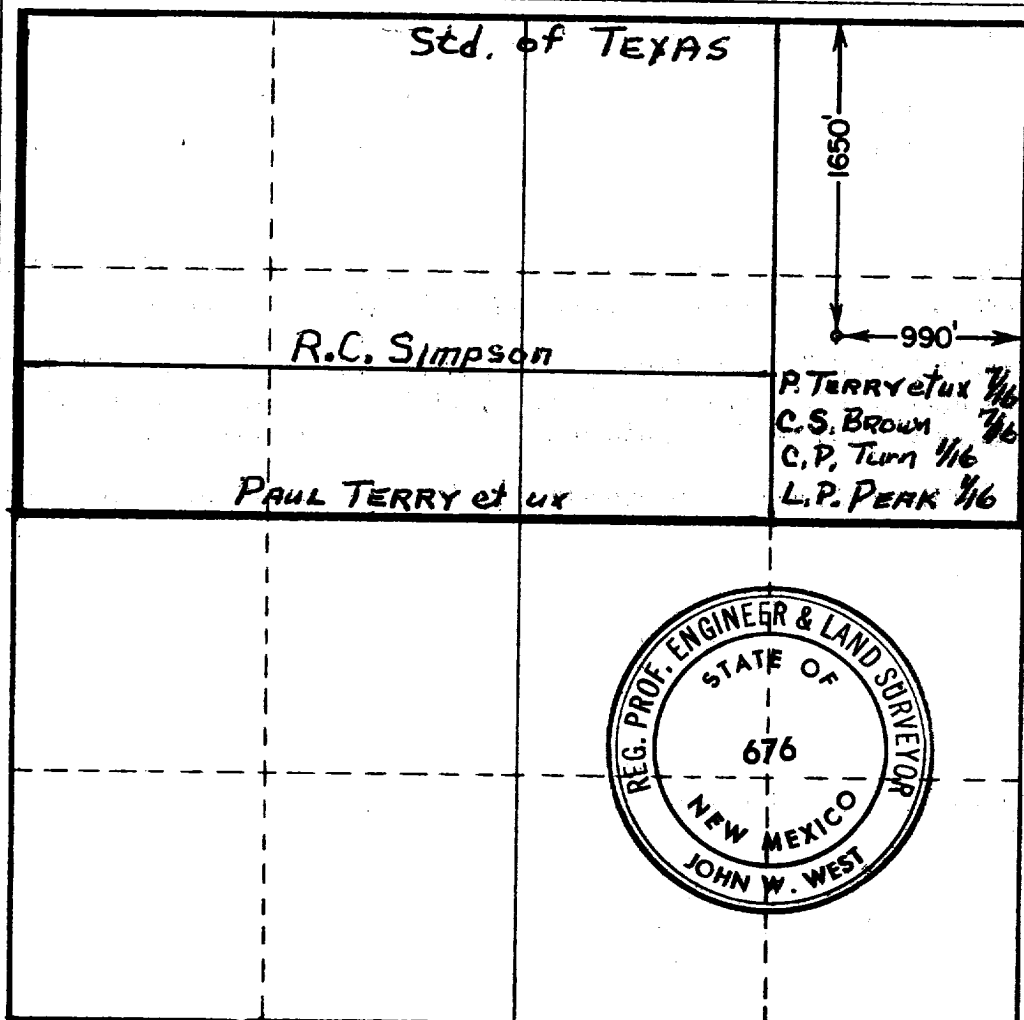
Unitization

AUG 15 1966

O. C. C.

If answer is "no," list the owners and tract descriptions which have actually been consolidated. (Use reverse side of this form if necessary.)

No allowable will be assigned to the well until all interests have been consolidated (by communitization, unitization, forced-pooling, or otherwise) or until a non-standard unit, eliminating such interests, has been approved by the Commission.



CERTIFICATION

I hereby certify that the information contained herein is true and complete to the best of my knowledge and belief.

B. Davidson

Lead Drilling Engineer

Standard Oil Company of Texas
A Division of Chevron Oil Co.

August 12, 1966

I hereby certify that the well location shown on this plat was plotted from field notes of actual surveys made by me or under my supervision, and that the same is true and correct to the best of my knowledge and belief.

Date Surveyed

JULY 31, 1966

Registered Professional Engineer and/or Land Surveyor

Certificate No.

NM PE & LS No. 676