

UNITED STATES
DEPARTMENT OF THE INTERIOR
GEOLOGICAL SURVEY

APPLICATION FOR PERMIT TO DRILL, DEEPEN, OR PLUG BACK

1a. TYPE OF WORK

DRILL ☐DEEPEN ☐PLUG BACK ☐

b. TYPE OF WELL

OIL
WELL ☐GAS
WELL ☐OTHER **WIW**SINGLE
ZONE ☐MULTIPLE
ZONE ☐

2. NAME OF OPERATOR

Newmont Oil Company

3. ADDRESS OF OPERATOR

Room 303, First National Bank Building, Artesia, New Mexico

4. LOCATION OF WELL (Report location clearly and in accordance with any State requirements.*)

At surface

2310' FNL and 1650' FNL of Section 11; T-18-S, R-29-E

At proposed prod. zone

Same

14. DISTANCE IN MILES AND DIRECTION FROM NEAREST TOWN OR POST OFFICE*

15. DISTANCE FROM PROPOSED*

LOCATION TO NEAREST
PROPERTY OR LEASE LINE, FT.
(Also to nearest drlg. line, if any)

18. DISTANCE FROM PROPOSED LOCATION*

TO NEAREST WELL, DRILLING, COMPLETED,
OR APPLIED FOR, ON THIS LEASE, FT.

16. NO. OF ACRES IN LEASE

19. PROPOSED DEPTH

275017. NO. OF ACRES ASSIGNED
TO THIS WELL**40**

20. ROTARY OR CABLE TOOLS

Cable Tool

21. ELEVATIONS (Show whether DF, RT, GR, etc.)

3512 GR

22. APPROX. DATE WORK WILL START*

3-25-66

23.

PROPOSED CASING AND CEMENTING PROGRAM

SIZE OF HOLE	SIZE OF CASING	WEIGHT PER FOOT	SETTING DEPTH	QUANTITY OF CEMENT
10"	8 5/8"	20	450	50 sz.
8"	4 1/2"	9.5	2750	100 sz.

We propose to drill with Cable Tool a 10" hole to approximately 450' and set 8 5/8" 20# casing with approximately 50 sacks cement. We will drill 8" hole to approximately 2750 and set 4 1/2" 9.5# casing with 100 sacks cement. Will complete as a water injection well.

RECEIVED

MAR 25 1966

G. O. T.
ARTESIA, OFFICERECEIVED
MAR 24 1966
U. S. GEOLOGICAL SURVEY
ARTESIA, NEW MEXICO

IN ABOVE SPACE DESCRIBE PROPOSED PROGRAM: If proposal is to deepen or plug back, give data on present productive zone and proposed new productive zone. If proposal is to drill or deepen directionally, give pertinent data on subsurface locations and measured and true vertical depths. Give blowout preventer program, if any.

24. ORIGINAL SIGNED BY

H. J. LEDBETTER

SIGNED

TITLE **Division Superintendent**DATE **March 24, 1966**

(This space for Federal or State office use)

PERMIT NO. _____

APPROVAL DATE _____

APPROVED BY
CONDITIONS OF APPROVAL, IF ANY:

TITLE _____

DATE _____

APPROVED
MAR 24 1966
RUDOLPH C. BAUER, JR.
ACTING DISTRICT ENGINEER

*See Instructions On Reverse Side

Instructions

General: This form is designed for submitting proposals to perform certain well operations, as indicated, on all types of lands and leases for appropriate action by either a Federal or a State agency, or both, pursuant to applicable Federal and/or State laws and regulations. Any necessary special instructions concerning the use of this form and the number of copies to be submitted, particularly with regard to local, area, or regional procedures and practices, either are shown below or will be issued by, or may be obtained from, the local Federal and/or State office.

Item 1: If the proposal is to redrill to the same reservoir at a different subsurface location or to a new reservoir, use this form with appropriate notations. Consult applicable State or Federal regulations concerning subsequent work proposals or reports on the well.

Item 4: If there are no applicable State requirements, locations on Federal or Indian land should be described in accordance with Federal requirements. Consult local State or Federal office for specific instructions.

Item 14: Needed only when location of well cannot readily be found by road from the land or lease description. A plat, or plats, separate or on this reverse side, showing the roads to, and the surveyed location of, the well, and any other required information, should be furnished when required by Federal or State agency offices.

Items 15 and 18: If well is to be, or has been directionally drilled, give distances for subsurface location of hole in any present or objective production zone.

Item 22: Consult applicable Federal or State regulations, or appropriate officials, concerning approval of the proposal before operations are started.

NEW MEXICO OIL CONSERVATION COMMISSION
WELL LOCATION AND ACREAGE DEDICATION PLAT

Form C-102
Supersedes C-128
Effective 1-1-65

All distances must be from the outer boundaries of the Section.

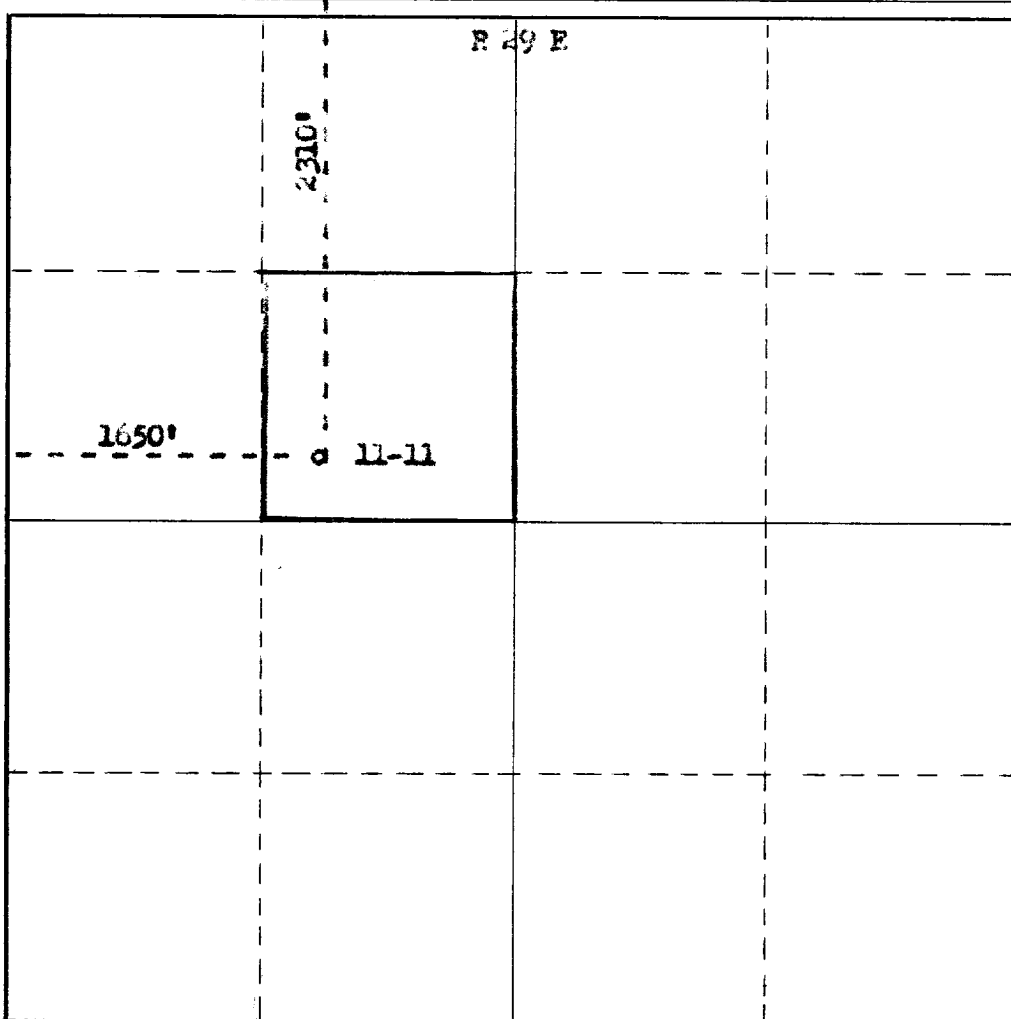
Operator Newmont Oil Company		Lease West Loco Hills Unit <i>E. 4 S Tract 11</i>		Well No. 11-11
Unit Letter F	Section 11	Township 18 South	Range 29 East	County Elddy
Actual Footage Location of Well: 1650 feet from the West line and 2310 feet from the North line				
Ground Level Elev. 3512	Producing Formation Grayburg	Pool Loco Hills	Dedicated Acreage: 40 Acres	

1. Outline the acreage dedicated to the subject well by colored pencil or hachure marks on the plat below.
2. If more than one lease is dedicated to the well, outline each and identify the ownership thereof (both as to working interest and royalty).
3. If more than one lease of different ownership is dedicated to the well, have the interests of all owners been consolidated by communitization, unitization, force-pooling, etc?

☐ Yes ☐ No If answer is "yes," type of consolidation **MAR 25 1966**

If answer is "no," list the owners and tract descriptions which have actually been consolidated: (Use reverse side of this form if necessary.) **ARTESIA, OFFICE**

No allowable will be assigned to the well until all interests have been consolidated (by communitization, unitization, forced-pooling, or otherwise) or until a non-standard unit, eliminating such interests, has been approved by the Commission.



CERTIFICATION

I hereby certify that the information contained herein is true and complete to the best of my knowledge and belief.

Name *Lorman Redlutter*
Position **Division Superintendent**
Company **NEWMONT OIL COMPANY**
Date **3/14/66**

I hereby certify that the well location shown on this plat was plotted from field notes of actual surveys made by me or under my supervision, and that the same is true and correct to the best of my knowledge and belief.

Date Surveyed **March 14, 1966**
Registered Professional Engineer and/or Land Surveyor
Certificate No. **842**
James H. Brown

0 330 660 990 1320 1650 1980 2310 2640 2000 1500 1000 500