



UNITED STATES
DEPARTMENT OF THE INTERIOR
GEOLOGICAL SURVEY

Drawer 1857
Roswell, New Mexico 88201

IN REPLY REFER TO:

RECEIVED

January 23, 1967

Tecoco Inc.
Post Office Box 3109
Midland, Texas 79701

Gentlemen:

Your Notice of Intention to Drill well No. 5 L. R. Manning "A" Federal in the NE 1/4 sec. 21, T. 13 S., R. 30 E., N.M.P.M., Eddy County, New Mexico, lease Las Cruces 028978(a), to a depth of 3,225 feet to test the Queen formation in the Potash Area is hereby approved.

One copy of the Notice is returned herewith. Please notify the District Engineer, Geological Survey, P. O. Drawer U, Artesia, New Mexico in sufficient time for a representative to witness all cementing operations.

Sincerely yours,

(CRIG. SGD.) JOHN A. ANDERSON

JOHN A. ANDERSON
Regional Oil and Gas Supervisor

Attachment

cc:
Washington
Mining Branch (2)
RMOC-Artesia (2) (v/2 cys Notice)✓
Artesia
Roswell (2)

UNITED STATES
DEPARTMENT OF THE INTERIOR
GEOLOGICAL SURVEY

APPLICATION FOR PERMIT TO DRILL, DEEPEN, OR PLUG BACK

1a. TYPE OF WORK

DRILL ☒DEEPEN ☐ PLUG BACK ☐

b. TYPE OF WELL

OIL
WELL ☒GAS
WELL ☐OTHER ☐SINGLE
ZONE ☒MULTIPLE
ZONE ☐

2. NAME OF OPERATOR

TEXACO INC.

3. ADDRESS OF OPERATOR

P. O. BOX 3109, MIDLAND, TEXAS 79701

4. LOCATION OF WELL (Report location clearly and in accordance with any State requirements.)*

At surface

660'FNL&1980'FWL, Section 21, T18S-R30E

At proposed prod. zone

14. DISTANCE IN MILES AND DIRECTION FROM NEAREST TOWN OR POST OFFICE*

6 miles South of Loco Hills, New Mexico

10. DISTANCE FROM PROPOSED*

LOCATION TO NEAREST
PROPERTY OR LEASE LINE, FT.

660'

(Also to nearest drlg. unit line, if any)

18. DISTANCE FROM PROPOSED LOCATION*

TO NEAREST WELL, DRILLING, COMPLETED,
OR APPLIED FOR, ON THIS LEASE, FT.

1st well

16. NO. OF ACRES IN LEASE

640

17. NO. OF ACRES ASSIGNED
TO THIS WELL

40

19. PROPOSED DEPTH

3225'

20. ROTARY OR CABLE TOOLS

Rotary

21. ELEVATIONS (Show whether DF, RT, GR, etc.)

GR--3463'

22. APPROX. DATE WORK WILL START*

At once

23.

PROPOSED CASING AND CEMENTING PROGRAM

SIZE OF HOLE	SIZE OF CASING	WEIGHT PER FOOT	SETTING DEPTH	QUANTITY OF CEMENT
9 7/8"	7 5/8"	24#, 15.28#	475'	*400 sx 250% to circulate
6 3/4"	4 1/2"	10.5#	3225'	**800 sx 150% to circulate

*Cement with 400 sx Class "C" neat (250% to circ.).

**Cement with 500 sx TLW w/10% salt 12.2#/gal followed by 300 sx Class "C" salt saturated 14.8#/gal (150% to circ.).

COMPLETION PROGRAM

1. Selectively perf. pay w/2 JSPF. 2. Treat w/1500 gal 15% N.E. acid
staged w/ball sealers. 3. Frac w/30,000 gal refined oil w/40,000 psi
sand staged w/ball sealers. Max. press. 4400 psi.

FORMATION TOPS EXPECTED

Anhydrite 440'
Base of Salt 1285'

Queen 2525'
Total Depth 3225'

IN ABOVE SPACE DESCRIBE PROPOSED PROGRAM: If proposal is to deepen or plug back, give data on present productive zone and proposed new productive zone. If proposal is to drill or deepen directionally, give pertinent data on subsurface locations and measured and true vertical depths. Give blowout preventer program, if any.

24.

SIGNED

(This space for Federal or State office use)

TITLE Division Civil Engineer

DATE 1/17/67

PERMIT NO.

APPROVAL DATE

APPROVED BY

TITLE

DATE

CONDITIONS OF APPROVAL, IF ANY:

NEW MEXICO OIL CONSERVATION COMMISSION
WE. LOCATION AND ACREAGE DEDICATION LAT

Form C-102
Supersedes C-128
Effective 1-1-65

All distances must be from the outer boundaries of the Section.

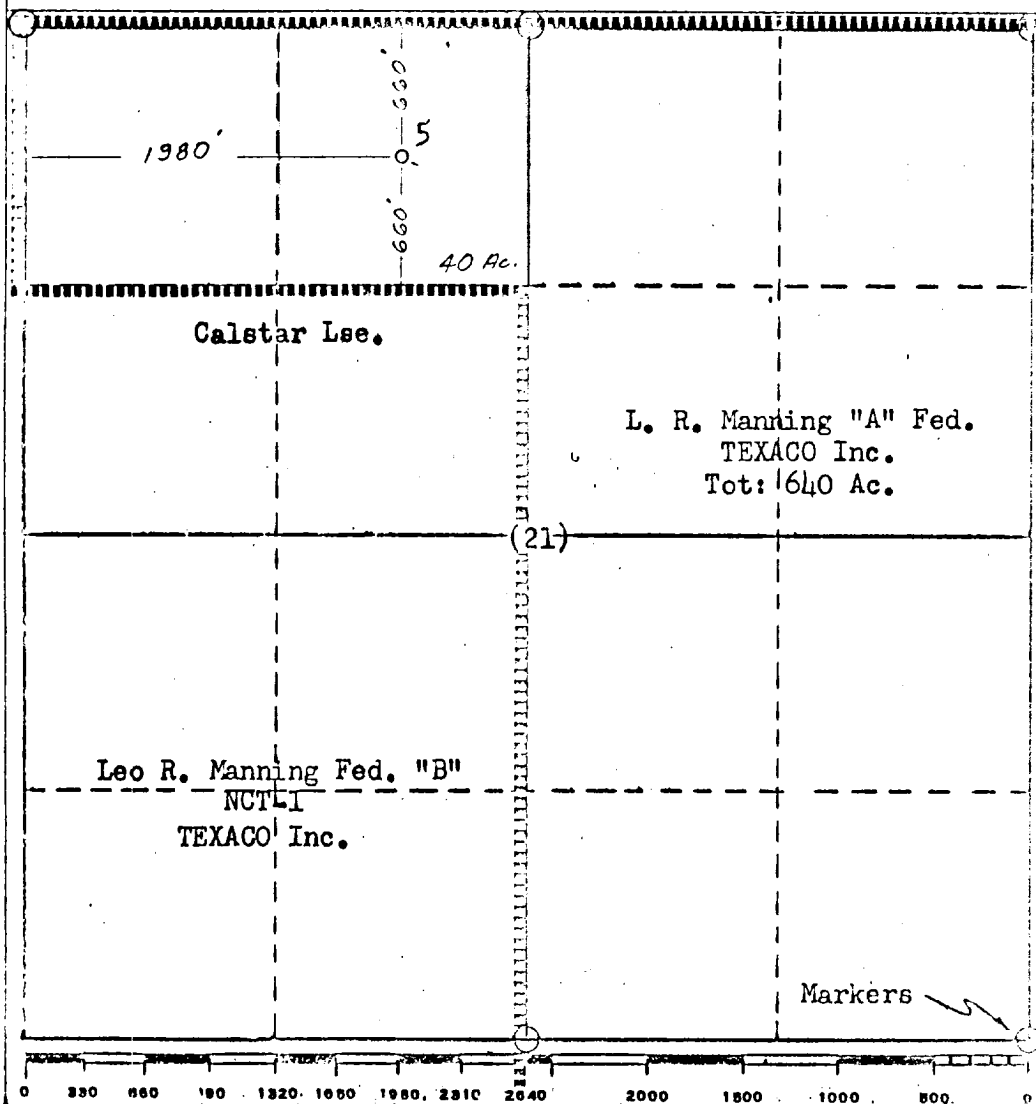
Operator TEXACO Inc.		Lease L. R. Manning "A" Fed.		Well No. 5
Unit Letter C	Section 21	Township 18 South	Range 30 East	County Eddy
Actual Footage Location of Well: 660 feet from the North line and 1980 feet from the West line Sec. 21				
Ground Level Elev: 3463	Producing Formation Queen	Pool Leo	Dedicated Acreage: 40 Acres	

- Outline the acreage dedicated to the subject well by colored pencil or hatchure marks on the plat below.
- If more than one lease is dedicated to the well, outline each and identify the ownership thereof (both as to working interest and royalty).
- If more than one lease of different ownership is dedicated to the well, have the interests of all owners been consolidated by communitization, unitization, force-pooling, etc?

☐ Yes ☐ No If answer is "yes," type of consolidation _____

If answer is "no," list the owners and tract descriptions which have actually been consolidated. (Use reverse side of this form if necessary.) _____

No allowable will be assigned to the well until all interests have been consolidated (by communitization, unitization, forced-pooling, or otherwise) or until a non-standard unit, eliminating such interests, has been approved by the Commission.



CERTIFICATION

I hereby certify that the information contained herein is true and complete to the best of my knowledge and belief.

Name **J. J. Velten**
Position **Division Civil Engineer**
Company **TEXACO Inc.**

Date **1/17/66**

I hereby certify that the location shown on this plat was derived from the notes of actual survey made by me or under my supervision, and that the same is true and correct to the best of my knowledge and belief.

Date Surveyed **1/16/66**

Registered Professional Engineer and/or Land Surveyor

J. J. Velten

Certificate No. **8174**