

**MEXICO OIL CONSERVATION COMMISSION
WELL LOCATION AND ACREAGE DEDICATION PLAT**

Form C-102
Supersedes C-128
Effective 1-1-65

All distances must be from the outer boundaries of the Section.

Operator MARATHON OIL COMPANY			Lease ANDERSON STATE		Well No. 1 Y
Unit Letter G	Section 14	Township 18 SOUTH	Range 24 EAST	County EDDY	
Actual Footage Location of Well: 1980 feet from the NORTH line and 1800 feet from the EAST line					
Ground Level Elev. 3686	Producing Formation CISCO		Pool WILDCAT		Dedicated Acreage: 320 Acres

1. Outline the acreage dedicated to the subject well by colored pencil or hatchure marks on the plat below.
2. If more than one lease is dedicated to the well, outline each and identify the ownership thereof (both as to working interest and royalty).
3. If more than one lease of different ownership is dedicated to the well, have the interests of all owners been consolidated by communitization, unitization, force-pooling, etc?

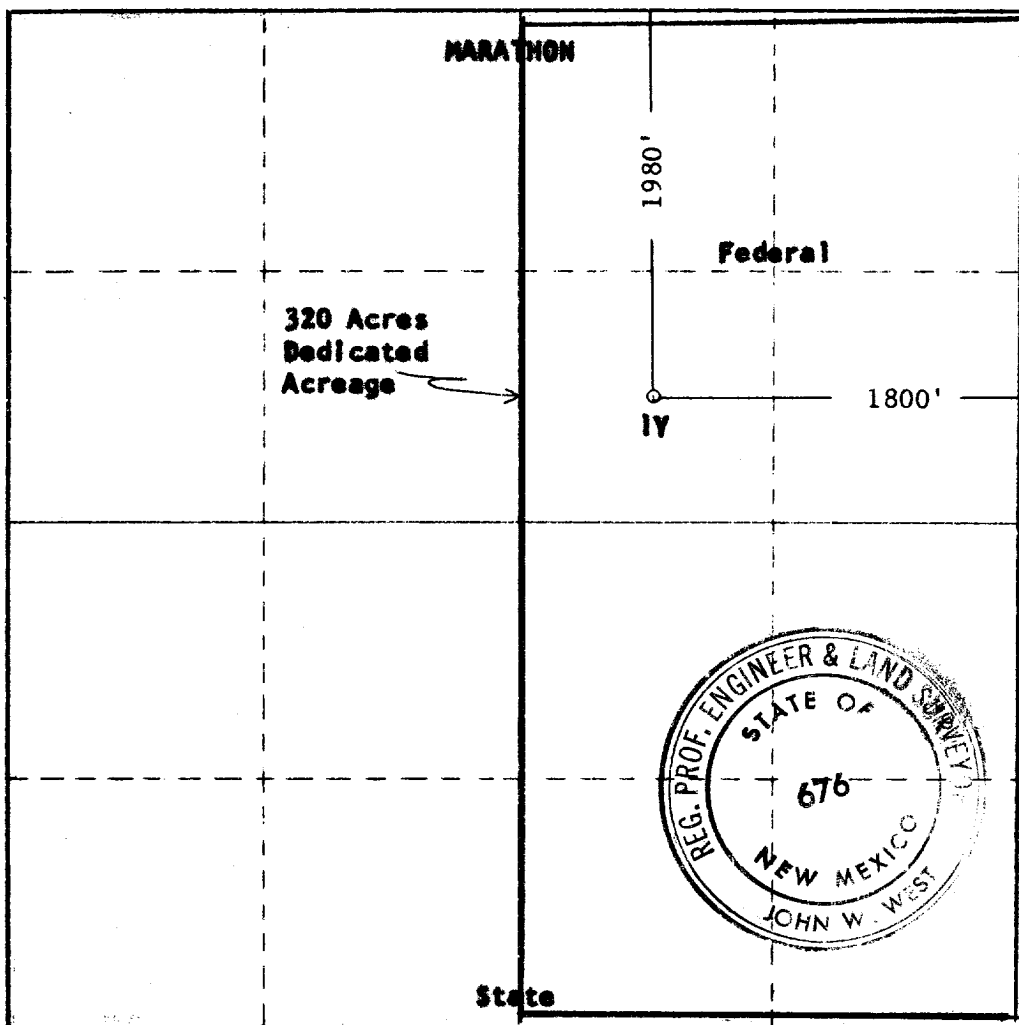
RECEIVED

MAR 15 1968

☐ Yes ☒ No If answer is "yes," type of consolidation _____

If answer is "no," list the owners and tract descriptions which have actually been consolidated. (Use reverse side of this form if necessary.) **See Reverse Side**

No allowable will be assigned to the well until all interests have been consolidated (by communitization, unitization, forced-pooling, or otherwise) or until a non-standard unit, eliminating such interests, has been approved by the Commission.



CERTIFICATION

I hereby certify that the information contained herein is true and complete to the best of my knowledge and belief.

J. W. Younger
Name

J. W. Younger

Position

Area Petroleum Engineer

Company

Marathon Oil Company

Date

March 11, 1968

I hereby certify that the well location shown on this plat was plotted from field notes of actual surveys made by me or under my supervision, and that the same is true and correct to the best of my knowledge and belief.

Date Surveyed

MARCH 11, 1968

Registered Professional Engineer and/or Land Surveyor

John W. West
Certificate No.

676



Federal Lease NM 0123986

N/2, NE/4, Sec. 14, T-18-S, R-24-E, (80 Acres)

State Lease OG 2000

S/2, NE/4 and N/2, SE/4, Sec. 14, T-18-S, R-24-E, (160 Acres)

State Lease K 1750

S/2, SE/4, Sec. 14, T-18-S, R-24-E, (80 Acres)

NOTE: All interests will be consolidated by communitization upon successfully completing a gas well at this location.