

NEW MEXICO OIL CONSERVATION COMMISSION
WELL LOCATION AND ACREAGE DEDICATION PLAT

Form C-102
Supersedes C-128
Effective 1-1-65

All distances must be from the outer boundaries of the Section.

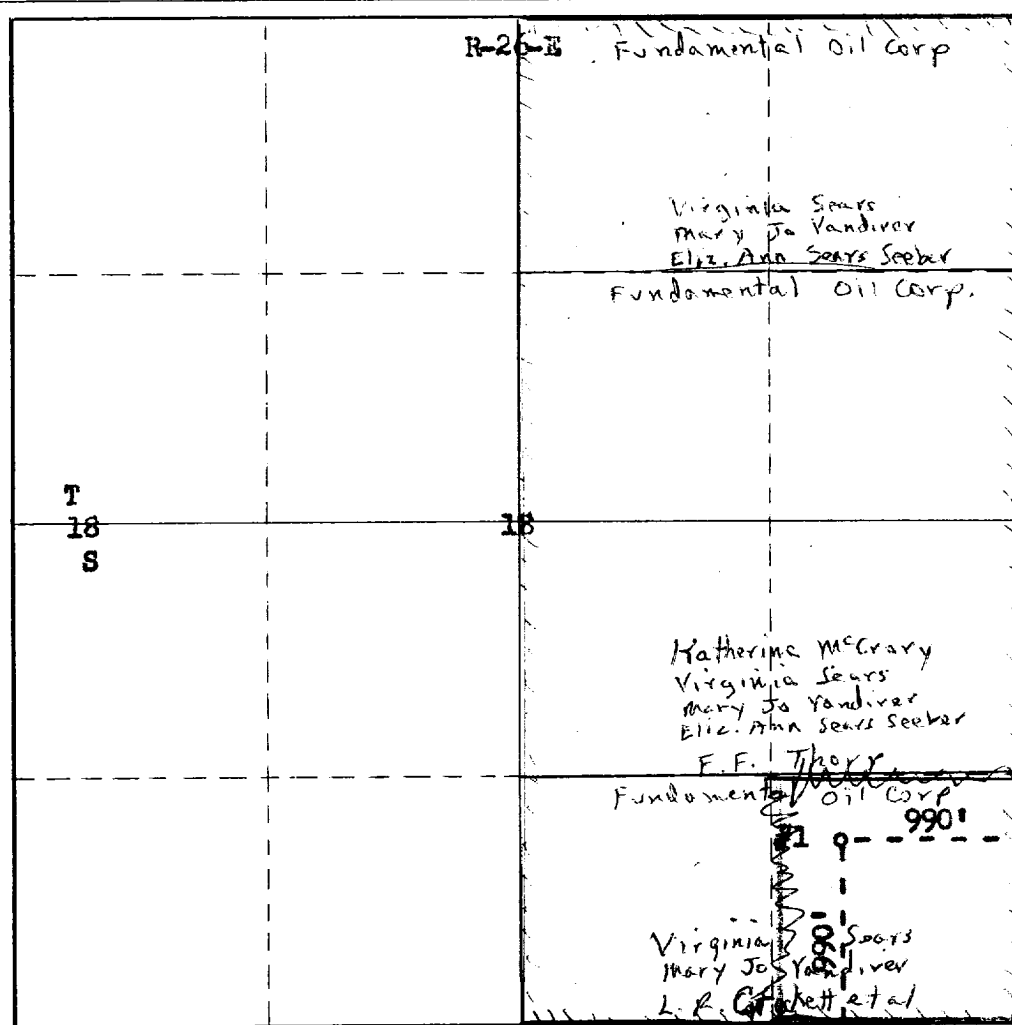
Operator The Fundamental Oil Corp.			Lease Marathon Thorp - Sears		Well No. 1
Unit Letter P	Section 18	Township T-18-S	Range R-26-E	County Eddy	
Actual Footage Location of Well:					
990 feet from the South line and		990 feet from the East line			
Ground Level Elev. 3412	Producing Formation Marianna	Pool Atocha Penn and	Dedicated Acreage: 40 320 Acres		

1. Outline the acreage dedicated to the subject well by colored pencil or hachure marks on the plat below.
2. If more than one lease is dedicated to the well, outline each and identify the ownership thereof (both as to working interest and royalty).
3. If more than one lease of different ownership is dedicated to the well, have the interests of all owners been consolidated by communitization, unitization, ~~forced-pooling~~ etc?

☒ Yes ☐ No If answer is "yes," type of consolidation By Lease Agreement **AUG 26 1968**

If answer is "no," list the owners and tract descriptions which have actually been consolidated (Use reverse side of this form if necessary.) **ARTESIA, OFFICE**

No allowable will be assigned to the well until all interests have been consolidated (by communitization, unitization, forced-pooling, or otherwise) or until a non-standard unit, eliminating such interests, has been approved by the Commission.



CERTIFICATION

I hereby certify that the information contained herein is true and complete to the best of my knowledge and belief.

Name Paul G. White
Position Engineer (Consulting)
Company Fundamental Oil Corp
Date 8-23-68

I hereby certify that the well location shown on this plat was plotted from field notes of actual surveys made by me or under my supervision, and that the same is true and correct to the best of my knowledge and belief.

Date Surveyed August 15, 1968
Registered Professional Engineer and/or Land Surveyor
James H. Brown
Certificate No. 542