

UNITED STATES  
DEPARTMENT OF THE INTERIOR  
GEOLOGICAL SURVEY

SUNDRY NOTICES AND REPORTS ON WELLS

(Do not use this form for proposals to drill or to deepen or plug back to a different reservoir. Use Form 9-331-C for such proposals.)

1. oil ☐ gas ☐ other **XX** Water Injection Well

2. NAME OF OPERATOR

**Anadarko Production Company** ✓

3. ADDRESS OF OPERATOR

**P. O. Drawer 130, Artesia, New Mexico 88210**

4. LOCATION OF WELL (REPORT LOCATION CLEARLY. See space 17 below.)

AT SURFACE: **2460' FNL & 180' FEL**

AT TOP PROD. INTERVAL: **Same**

AT TOTAL DEPTH: **Same**

16. CHECK APPROPRIATE BOX TO INDICATE NATURE OF NOTICE, REPORT, OR OTHER DATA

REQUEST FOR APPROVAL TO:

TEST WATER SHUT-OFF ☐  
FRACTURE TREAT ☐  
SHOOT OR ACIDIZE ☐  
REPAIR WELL ☐  
PULL OR ALTER CASING ☐  
MULTIPLE COMPLETE ☐  
CHANGE ZONES ☐  
ABANDON\* ☒  
(other) ☐

SUBSEQUENT REPORT OF:

☐  
☐  
☐  
☐  
☐  
☐  
☐  
☐  
☐  
☐

RECEIVED

JAN 05 1983

O. C. D.  
ARTESIA OFFICE

RECEIVED

NOTE: Report results of multiple completion or zone change on Form 9-331-C.

CL 2 853  
MINERAL SERVICE  
ROSWELL, NEW MEXICO

17. DESCRIBE PROPOSED OR COMPLETED OPERATIONS (Clearly state all pertinent details, and give pertinent dates, including estimated date of starting any proposed work. If well is directionally drilled, give subsurface locations and measured and true vertical depths for all markers and zones pertinent to this work.)\*

1. Move in, rig up pulling unit.
2. Pump brine gel mix @ 25# gel/bbl of 10# brine from PBTD (2595') to first plugging point.
3. Spot 100' Class C cement with 3% CaCL 50' above & 50' below Grayburg top @ 2440'.
4. Perf bottom of Salt section @ ~~820'~~ **430'** & perf 50' below 8-5/8" csg stub @ 440'; tag first plug with wireline.
5. Pump brine gel mix @ 25# gel/bbl of 10# brine from top of first plug to bottom of Salt section.
6. Spot 100' Class C cement with 3% CaCL from ~~820'~~ **430'** to 780' to cover bottom of Salt section.
7. Tag plug with wireline. **430' - 870'**
8. Pump brine gel mix @ 25# gel/bbl of 10# brine from 780' to 440'.
9. Circ Class C cement down 4 1/2" csg out holes @ 440' up 8-5/8" csg to surface to cover 8-5/8" csg stub and top of Salt section. This plug will also serve as surface plug.
10. Cut off all casing & anchors below surface; set P & A marker; clean & level location.

Subsurface Safety Valve: Manu. and Type \_\_\_\_\_ Set @ \_\_\_\_\_ Ft.

18. I hereby certify that the foregoing is true and correct

SIGNED *Mike Braswell* TITLE **Field Foreman** DATE **December 27, 1982**

(This space for Federal or State office use)

APPROVED BY *Amanda O. Lopez* TITLE *Production Supervisor* DATE *1/4/83*

CONDITIONS OF APPROVAL, IF ANY:

Note: If cannot establish circulation to surface, will spot 200' cement plug from 500' to 300' & brine gel mix from 300' to surface after tagging 2nd plug. Spot 10 sx plug @ surface after tagging 3rd plug. Braidenhead squeeze Class C cement with 3% CaCL from surface to 8-5/8" csg. \*See Instructions on Reverse Side stub. Cut off casing & install P & A marker.

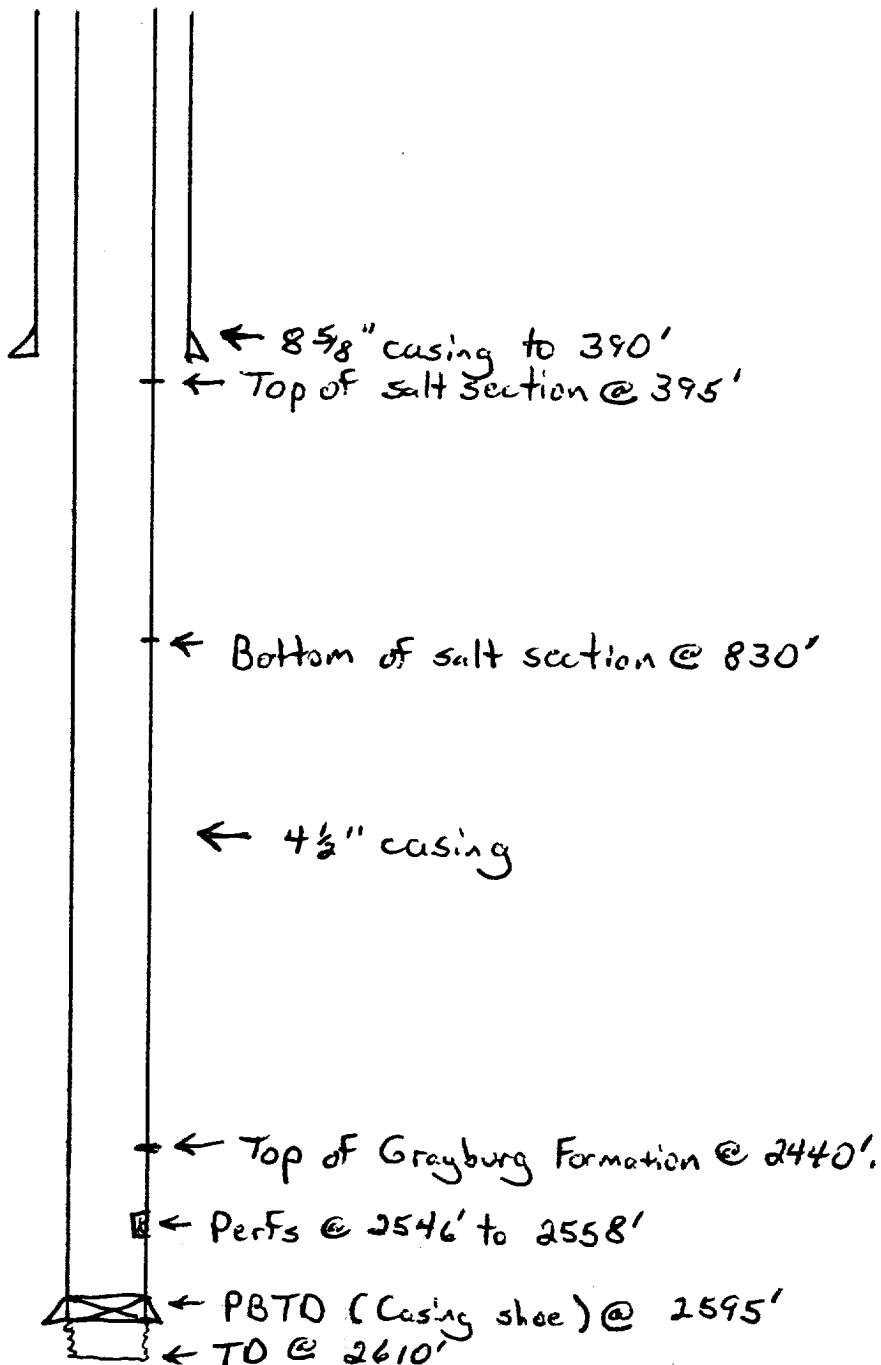
PROJECT COMPUTATIONS

NO. 1 OF 1 SHEETS

DATE 12-27-82 PROJECT FWLH SU 1-29 JOB NO. \_\_\_\_\_

BY mdB CHK.: \_\_\_\_\_ SUBJECT P+A Well

3522' GL





# United States Department of the Interior

## MINERALS MANAGEMENT SERVICE

ROSWELL DISTRICT OFFICE

POST OFFICE DRAWER 1857

ROSWELL, NEW MEXICO 88201

Re: Permanent Abandonment

Well: # 29 TRACT 1

### CONDITIONS OF APPROVAL

1. Plugging operations authorized are subject to the attached "General Requirements for Permanent Abandonment of Wells on Federal Leases".
2. The ARTESIA office is to be notified in sufficient time for a representative to witness all plugging operations.

Roswell Office: (505) 624-1790

Artesia Sub-District: (505) 746-9838

Hobbs Sub-District: (505) 393-3612

3. Blowout prevention equipment is required.

#### 4a. Federal Owned Surface:

a. ☐

In addition to normal filling of pits and cleanup of location, additional surface restoration work may be required, i.e. ripping of pad and/or access road, reseeding, etc. Please contact the Bureau of Land Management for the surface restoration requirements for this well at:

Roswell (505) 622-7670

Carlsbad (505) 887-6544

b. ☒

#### Non-Federal Owned Surface:

Surface restoration after abandonment is to be in accordance with the operator-surface owner agreement. When surface restoration is accomplished, please furnish this office with one of the following:

1. A statement signed by the surface owner showing that the surface restoration is to his satisfaction.
2. A copy of the Operator-Surface Owner Agreement stating what the surface restoration agreement is.

Continued Conditions of Approval

5. First plug will be placed across the perfs. Plug will be set by squeezing cement into perfs and leaving plug from 2595' to 2495' in 4½" casing.
6. In step 4 perf at 930' and squeeze leaving a 100' plug from 930' to 830' in 4½" casing.
7. At step 9 cement is circulated between 4½" and 8 5/8" csg. 4½" csg will be filled with cement from 440' to surface.