



UNITED STATES
DEPARTMENT OF THE INTERIOR
GEOLOGICAL SURVEY
P. O. Drawer 1097
Roswell, New Mexico 88201

October 20, 1969

Yates Petroleum Corporation
277 South 4th Street
Artesia, New Mexico 88201

Re: Roswell

Your notice of intention to drill well No. 5-0200, "AL" in the SE 1/4 sec. 24, T. 13 N., R. 30 E., N.M.P.M., Elky County, New Mexico, near Las Cruces 100,000(b), to a depth of 300 feet to test the Green formation in the Potash Area, is hereby approved.

One copy of the notice is returned herewith. Please notify the District Engineer, Geological Survey, Post Office Drawer 1, Artesia, New Mexico, 30 days in sufficient time for a representative to witness all cementing operations.

Sincerely yours,

CARL C. TRAYWICK
Acting Oil and Gas Supervisor

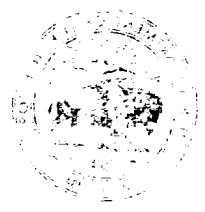
Attachment

cc:
Washington
Mining Branch (2)
RMOCC-Artesia (2) (w/2 cys Notice) ✓
Artesia (w/cy Notice)
Roswell (2) (w/cy Notice)

RECEIVED
OCT 21 1969
O. C. C.
ARTESIA, OFFICE

IN REPLY REFER TO

UNITED STATES
DEPARTMENT OF THE INTERIOR
GEOLOGICAL SURVEY



RECEIVED
OCT 1 1968
G. C. C.
LABORATORY

DEPARTMENT OF THE INTERIOR
GEOLOGICAL SURVEY

30-015-20260

LOCATION FOR PERMIT TO DRILL, DEEPEN, OR PLUG BACK

1. TYPE OF WORK: DRILL ☒ DEEPEN ☐ PLUG BACK ☐

2. NAME OF WELL: GAS WELL ☐ OTHER ☐ SINGULAR ZONE ☐ MULTIPLE ZONE ☐

3. NAME OF OPERATOR: Yates Petroleum Corporation

4. ADDRESS OF OPERATOR: 207 So. Van St. - Artesia, New Mexico 88210

5. LOCATION OF WELL (Report location clearly and in accordance with any State requirements.)*
At surface SE SW 330' PSE & 2310' PNL of Sec. 24-180-301
At proposed prod. zone

6. DISTANCE IN MILES AND DIRECTION FROM NEAREST TOWN OR POST OFFICE*: Approx. 3 miles So. of Loco Hills, N.M.

7. DISTANCE FROM PROPOSED* LOCATION TO NEAREST PROPERTY OR LEASE LINE, FT. (also to nearest drilg. unit line, if any) 330'

8. DISTANCE FROM PROPOSED LOCATION* TO NEAREST WELL, DRILLING, COMPLETED, OR APPLIED FOR, ON THIS LEASE, FT. 990'

9. NO. OF ACRES IN LEASE

10. PROPOSED DEPTH Approx 3300'

11. NO. OF ACRES ASSIGNED TO THIS WELL 50

12. ROTARY OR CABLE TOOLS Cable

13. ELEVATIONS (Show whether DF, RT, GR, etc.) 3564' GR

14. APPROX. DATE WORK WILL START Immediately

PROPOSED CASING AND CEMENTING PROGRAM

SIZE OF HOLE	SIZE OF CASING	WEIGHT PER FOOT	SETTING DEPTH	QUANTITY OF CEMENT
10"	8-5/8"	24#	770' Approx.	100 SX
8"	5 1/2"	14#	3600' "	200 SX
8"	4 1/2"	9#	3600' "	200 SX

It is our intention to drill into the top of the salt, set 8-5/8" casing at approx. 770' and cement with 100 sx, then drill an 8 inch hole to approx. 3600' and set 5 1/2" or 4 1/2" casing and cement with approx 200 sx.

RECEIVED
OCT 13 1969
U.S. GEOLOGICAL SURVEY
BUREAU OF LAND MANAGEMENT
NEW MEXICO

IN ABOVE SPACE DESCRIBE PROPOSED PROGRAM: If proposal is to deepen or plug back, give data on present productive zone and proposed new productive zone. If proposal is to drill or deepen directionally, give pertinent data on subsurface locations and measured and true vertical depths. Give flowline preventer program, if any.

24. SIGNED _____ TITLE Geologist DATE _____

(This space for Federal or State office use)

PERMIT NO. _____ APPROVAL DATE _____

APPROVED BY _____ TITLE _____ DATE _____

CONDITIONS OF APPROVAL, IF ANY:

*See Instructions On Reverse Side

RECEIVED
OCT 21 1969
O. C. C.
ARTESIA, OFFICE

N. MEXICO OIL CONSERVATION COMMISSION
WELL LOCATION AND ACREAGE DEDICATION PLAT

Form C-102
Supersedes C-128
Effective 1-1-65

All distances must be from the outer boundaries of the Section.

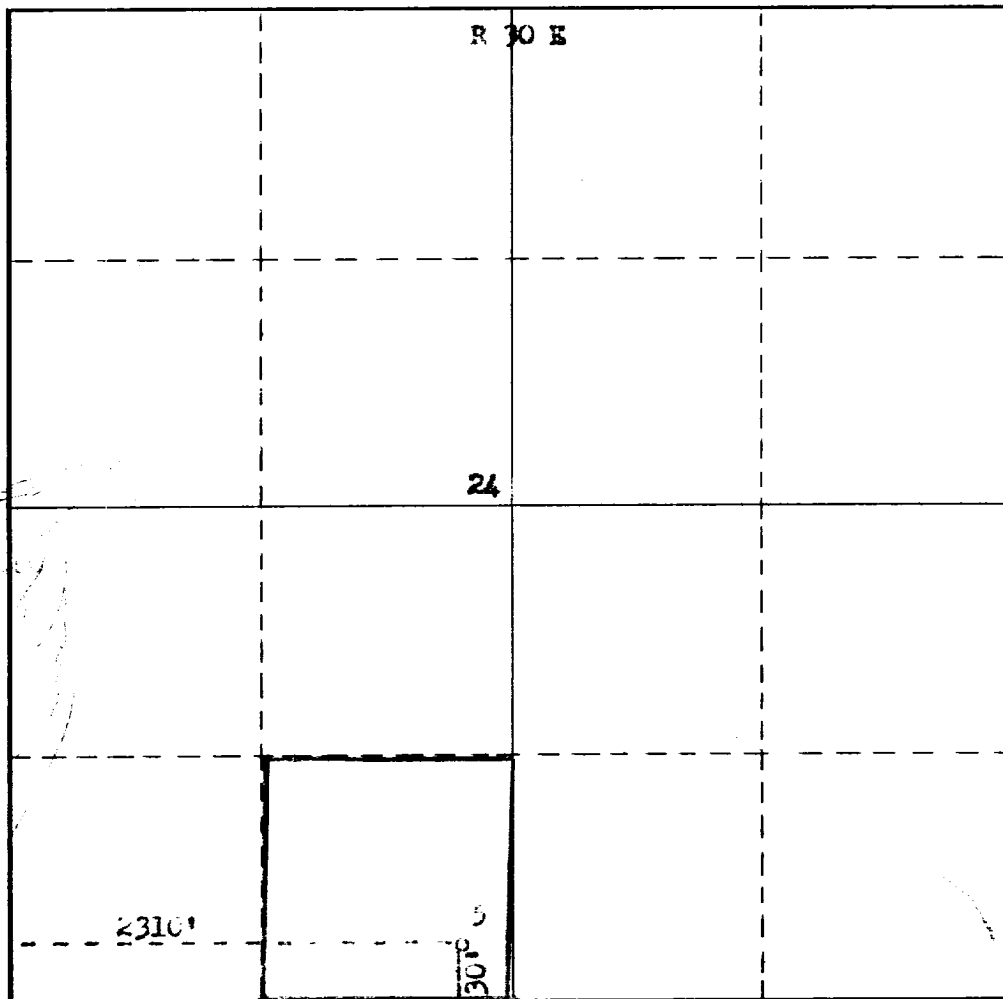
Operator Yates Petroleum Corporation			Lease Creek AL		Well No. 5
Unit Letter 7	Section 24	Township 18 South	Range 30 East	County Eddy	
Actual Footage Location of Well: 320 feet from the South line and 2310 feet from the West line					
Ground Level Elev. 3564	Producing Formation Queen	Pool Shugart	Dedicated Acreage: 40 Acres		

- Outline the acreage dedicated to the subject well by colored pencil or hatchure marks on the plat below.
- If more than one lease is dedicated to the well, outline each and identify the ownership thereof (both as to working interest and royalty).
- If more than one lease of different ownership is dedicated to the well, have the interests of all owners been consolidated by communitization, unitization, force-pooling, etc?

☐ Yes ☐ No If answer is "yes," type of consolidation _____

If answer is "no," list the owners and tract descriptions which have actually been consolidated. (Use reverse side of this form if necessary.) _____

No allowable will be assigned to the well until all interests have been consolidated (by communitization, unitization, forced-pooling, or otherwise) or until a non-standard unit, eliminating such interests, has been approved by the Commission.



CERTIFICATION

I hereby certify that the information contained herein is true and complete to the best of my knowledge and belief.

Richard C. Norman
Name

M. L. Armstrong

Position

Agent

Company

Yates Petroleum Corp.

Date

10-10-69

I hereby certify that the well location shown on this plat was plotted from field notes of actual surveys made by me or under my supervision, and that the same is true and correct to the best of my knowledge and belief.

Date Surveyed

October,

Registered Professional Engineer and/or Land Surveyor

James H. Brown
Certificate No.

N.M.L.S. NO. 542